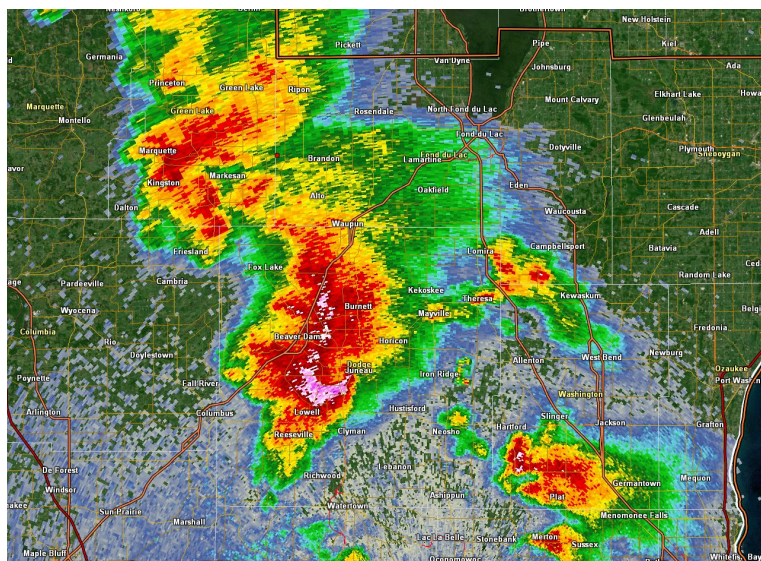




# May 15, 2025 Severe Storms

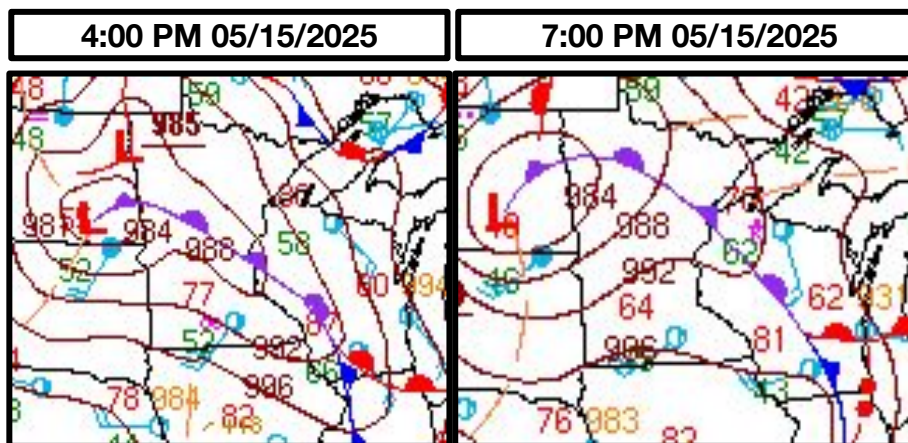
## Damaging Winds, Large Hail, and Tornadoes

**Event Overview:** A broken line of severe thunderstorms developed in the early afternoon hours of May 15th in southwestern Wisconsin, strengthening and progressing northeastward through the evening before exiting into Lake Michigan. Storms produced damaging winds, widespread large hail, and several tornadoes. Two tornadoes in Dodge County were destructive and were rated EF2.

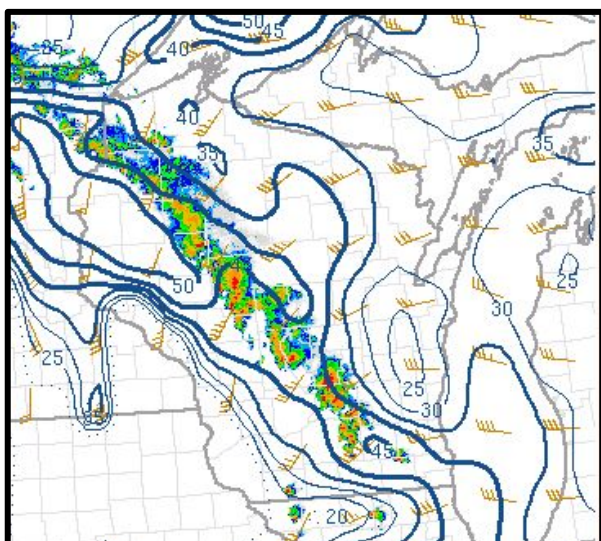


Radar image from 5:45 PM CDT during the Juneau tornado.

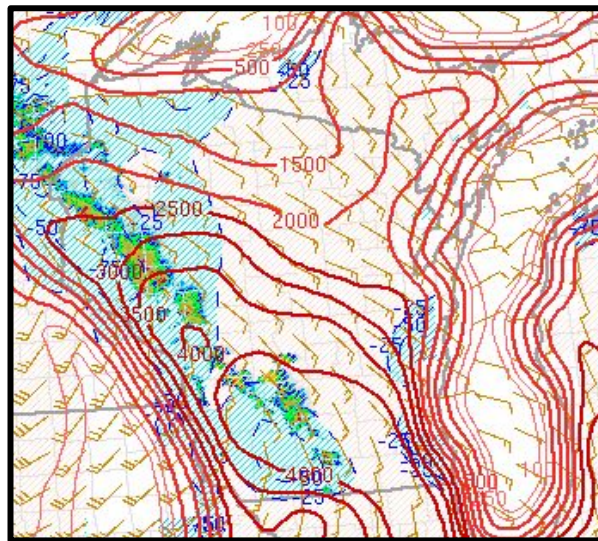
**Event Setup:** A strong low pressure system developed in the northern Plains the morning of the 15th, deepening and sending a strong front through southern Wisconsin. A warm front lifted into the region during the late afternoon and early evening, allowing for storms to expand southward across all of the Lake Michigan shoreline. Very strong shear and instability (the core ingredients for severe weather) were available across all of Wisconsin.



WPC Surface Analyses from the 15th.



Bulk Effective Shear (SPC Mesoscale Analysis page), over 40 kt available at 5 PM CDT



Surface based CAPE (SPC Mesoscale Analysis Page), over 4000 J/kg in southern Wisconsin at 5 PM CDT





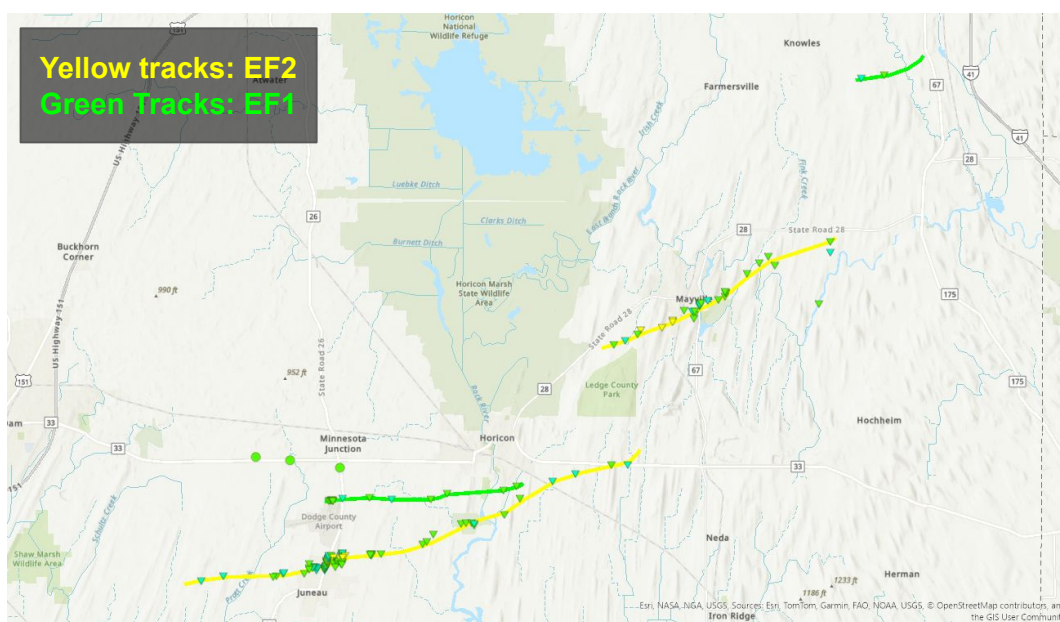


# May 15, 2025 Severe Storms

## Damaging Winds, Large Hail, and Tornadoes

**Tornadoes:** Multiple Tornado Warnings were issued across southern Wisconsin during the afternoon and evening hours, with several tornadoes confirmed on the ground. Funnel clouds were also reported across Sauk, Columbia, and Dodge Counties. The most significant tornadoes occurred in Dodge County from Juneau to Mayville.

**Damaging Winds and Large Hail:** Large hail was reported across wide swaths of southern Wisconsin, with more localized damaging winds reported within the strongest storms. As storms spread along Lake Michigan, widespread 60 to 70 mph wind gusts were reported.



Tornado Damage Survey Paths: Juneau, Horicon, Mayville, and Lomira areas



Quarter to half dollar sized hail.  
Photo Credit: Andrew Quigley



Wind Damage: Sheboygan County,  
reported by a local business



Damage from Mayville tornado. Photo Credit: Brian Jansen.



National Oceanic and  
Atmospheric Administration  
U.S. Department of Commerce

National Weather Service  
Milwaukee, WI