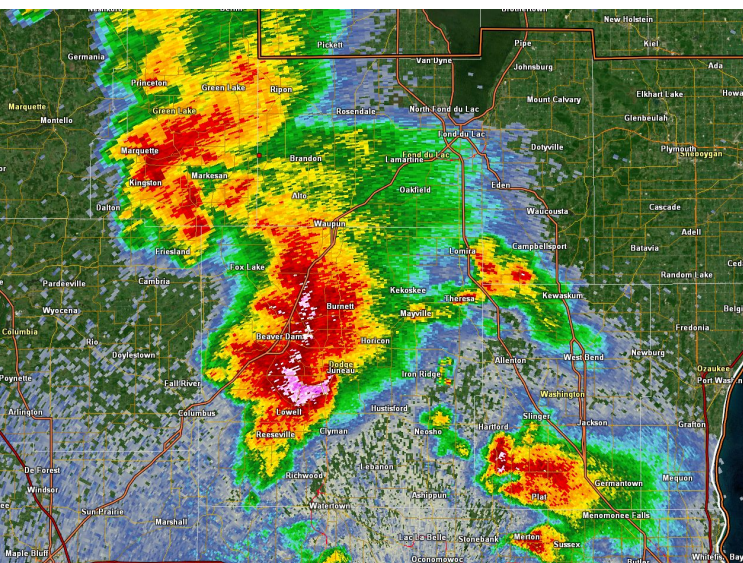




May 15, 2025 Severe Storms

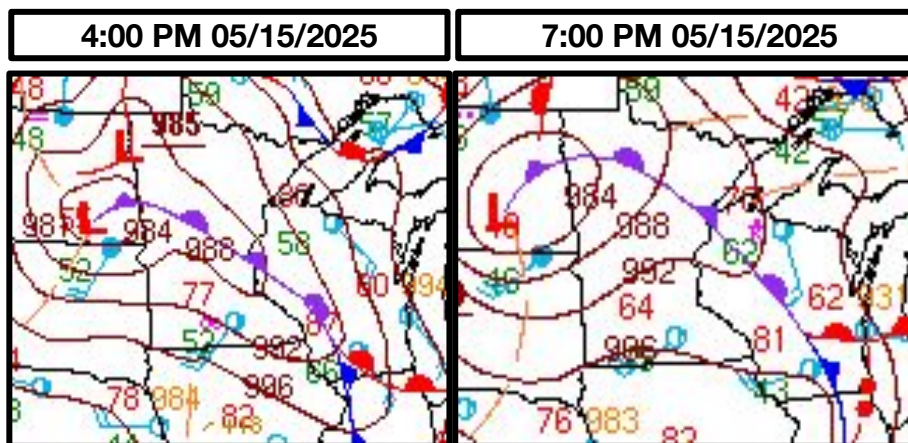
Damaging Winds, Large Hail, and Tornadoes

Event Overview: A broken line of severe thunderstorms developed in the early afternoon hours of May 15th in southwestern Wisconsin, strengthening and progressing northeastward through the evening before exiting into Lake Michigan. Storms produced damaging winds, widespread large hail, and seven tornadoes. Two tornadoes in Dodge County were strong, rated EF2 on the Enhanced Fujita Scale. Twelve tornadoes in total occurred across Wisconsin.

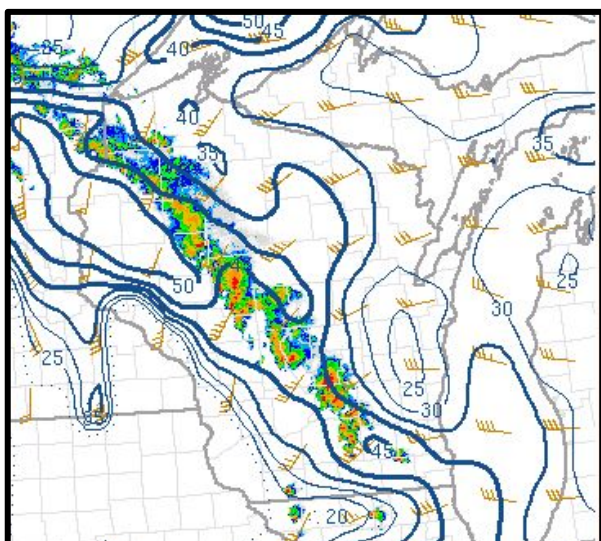


Radar image from 5:45 PM CDT during the Juneau tornado.

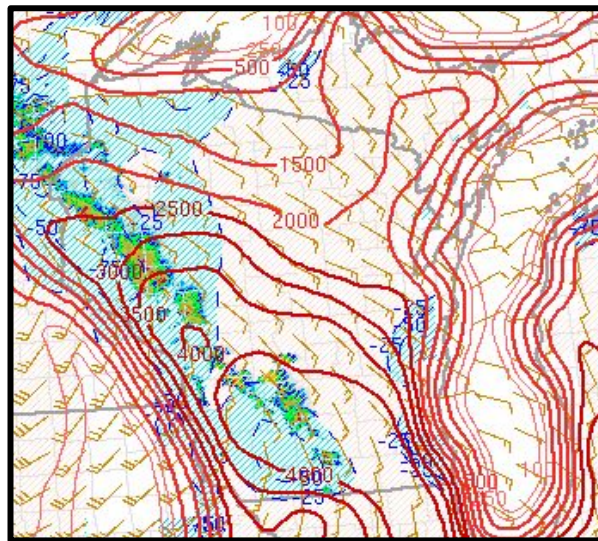
Event Setup: A strong low pressure system developed in the northern Plains the morning of the 15th, deepening and sending a strong front through southern Wisconsin. A warm front lifted into the region during the late afternoon and early evening, allowing for storms to expand southward across all of the Lake Michigan shoreline. Very strong shear and instability (the core ingredients for severe weather) were available across all of Wisconsin.



WPC Surface Analyses from the 15th.



Bulk Effective Shear (SPC Mesoscale Analysis page), over 40 kt available at 5 PM CDT



Surface based CAPE (SPC Mesoscale Analysis Page), over 4000 J/kg in southern Wisconsin at 5 PM CDT



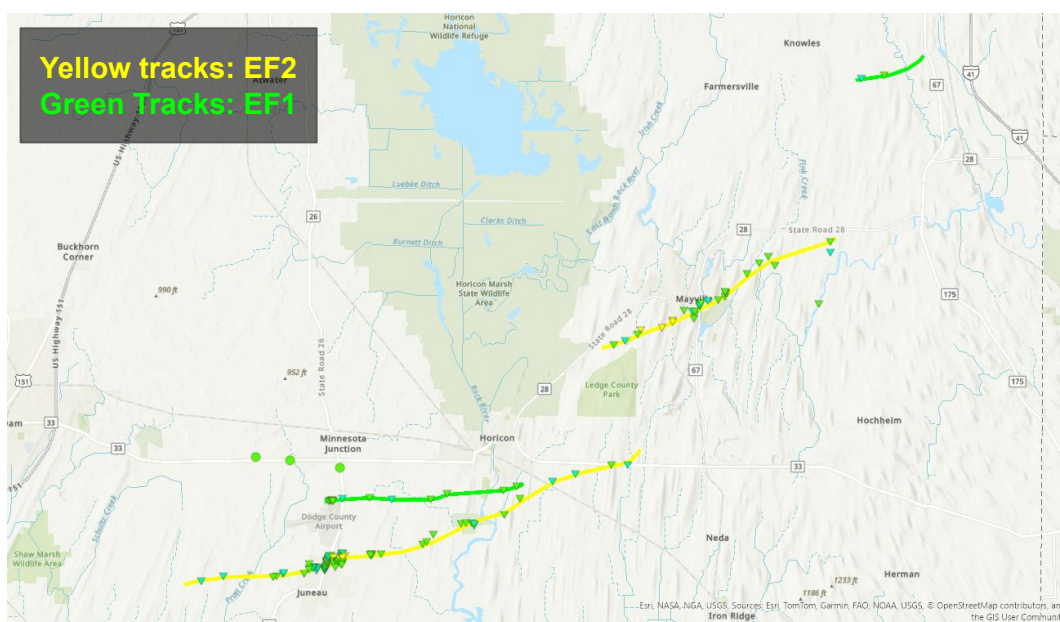


May 15, 2025 Severe Storms

Damaging Winds, Large Hail, and Tornadoes

Tornadoes: Multiple Tornado Warnings were issued across southern Wisconsin during the afternoon and evening hours, with several tornadoes confirmed on the ground. Funnel clouds were also reported across Sauk, Columbia, and Dodge Counties. The most significant tornadoes occurred in Dodge County from Juneau to Mayville.

Damaging Winds and Large Hail: Large hail was reported across wide swaths of southern Wisconsin, with more localized damaging winds reported within the strongest storms. As storms spread along Lake Michigan, widespread 60 to 70 mph wind gusts were reported.



Tornado Damage Survey Paths: Juneau, Horicon, Mayville, and Lomira areas



Quarter to half dollar sized hail.
Photo Credit: Andrew Quigley



Wind Damage: Sheboygan County,
reported by a local business



Damage from Mayville tornado. Photo Credit: Brian Jansen.



National Oceanic and
Atmospheric Administration
U.S. Department of Commerce

National Weather Service
Milwaukee, WI



May 15, 2025 Severe Storms

Damaging Winds, Large Hail, and Tornadoes

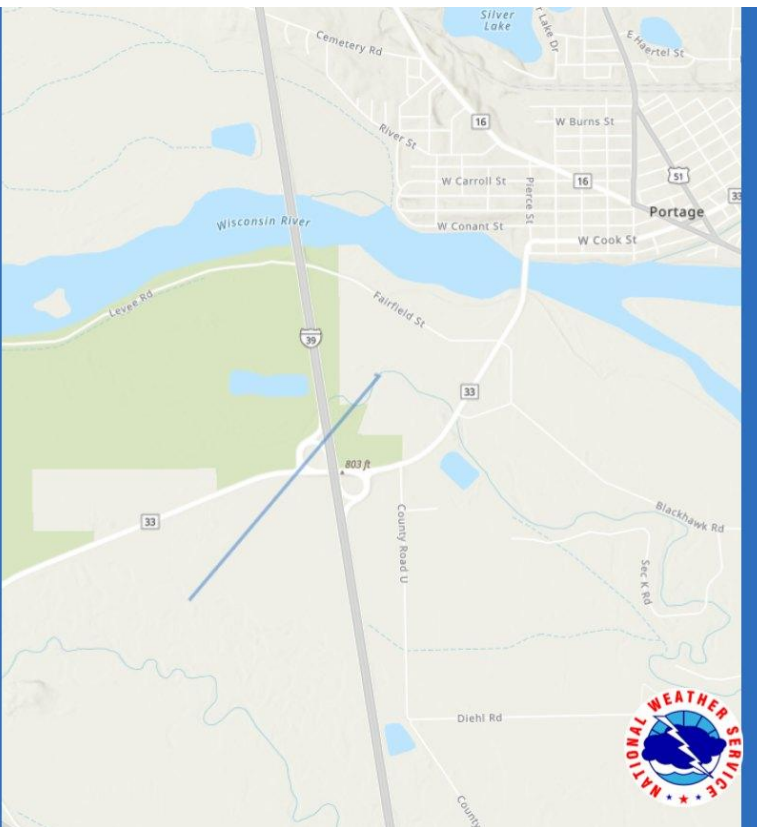
Confirmed Tornadoes

NATIONAL WEATHER SERVICE
OCEANIC AND ATMOSPHERIC ADMINISTRATION

Preliminary Damage Survey Results

Portage - Columbia County

Date	May 15, 2025
Time (Local)	4:42-4:43pm
EF Rating	EF-U
Est. Peak Winds	Unknown mph
Path Length	Unknown miles
Max Width	Unknown yards
Injuries/Deaths	0/0



NATIONAL WEATHER SERVICE
OCEANIC AND ATMOSPHERIC ADMINISTRATION

Preliminary Damage Survey Results

Rock Springs - Sauk County

Date	May 15, 2025
Time (Local)	4:08-4:09pm
EF Rating	EF-0
Est. Peak Winds	70 mph
Path Length	Xx miles
Max Width	20 yards
Injuries/Deaths	0/0



National Oceanic and
Atmospheric Administration
U.S. Department of Commerce

National Weather Service
Milwaukee, WI

May 15, 2025 Severe Storms

Damaging Winds, Large Hail, and Tornadoes

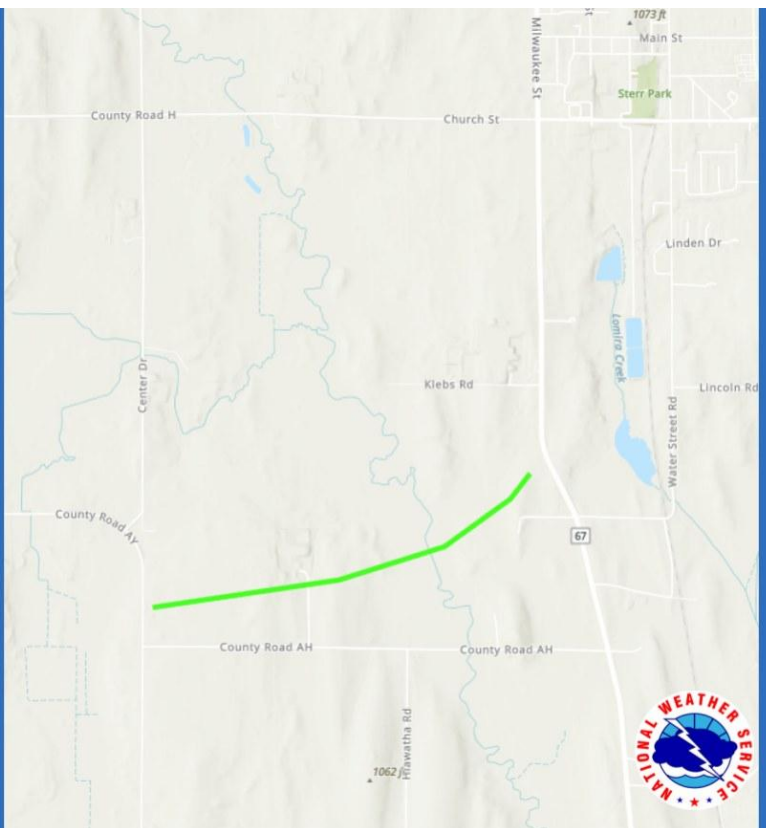
Confirmed Tornadoes - Continued



Preliminary Damage Survey Results

Lomira - Dodge County

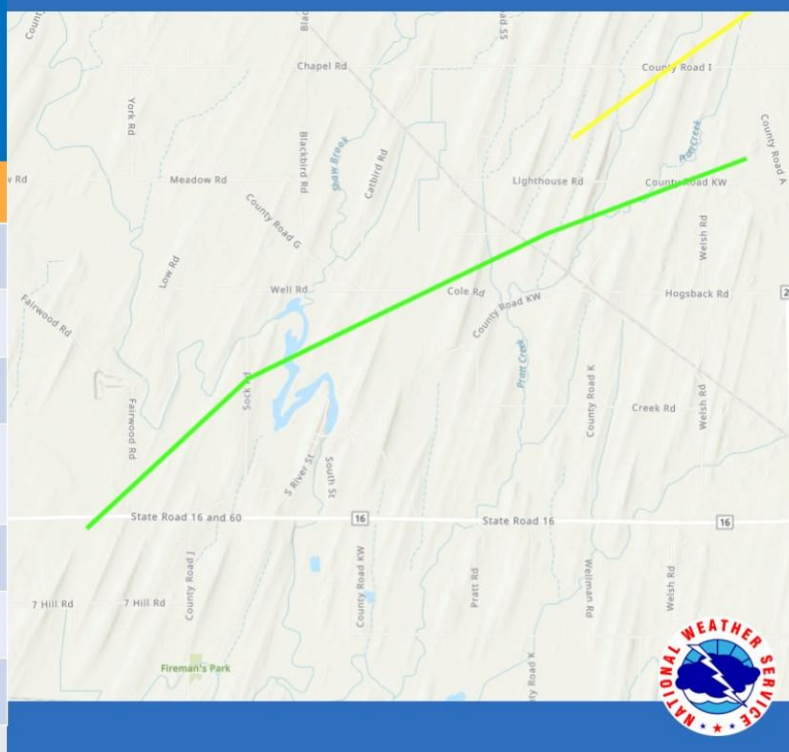
Date	May 15, 2025
Time (Local)	6:09-6:10 pm
EF Rating	EF-1
Est. Peak Winds	95 mph
Path Length	1.55 miles
Max Width	50 yards
Injuries/Deaths	0/0



Preliminary Damage Survey Results

Lowell - Dodge County

Date	May 15, 2025
Time (Local)	5:32-5:42 pm
EF Rating	EF-1
Est. Peak Winds	90 mph
Path Length	6.71 miles
Max Width	100 yards
Injuries/Deaths	0/0



**National Oceanic and
Atmospheric Administration**
U.S. Department of Commerce

**National Weather Service
Milwaukee, WI**



May 15, 2025 Severe Storms

Damaging Winds, Large Hail, and Tornadoes

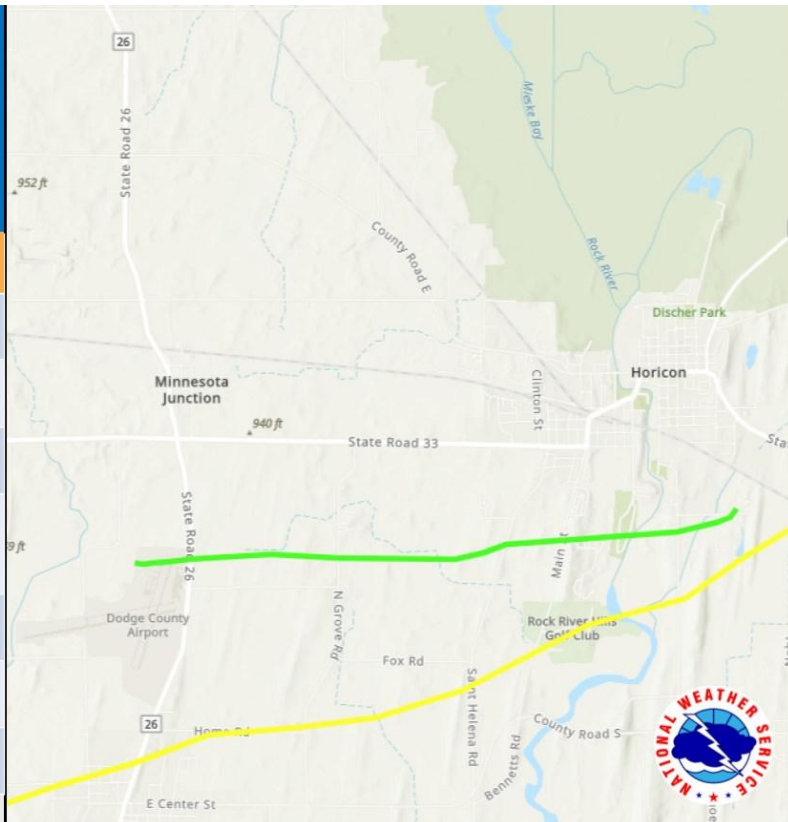
Confirmed Tornadoes - Continued

NATIONAL WEATHER SERVICE
OCEANIC AND ATMOSPHERIC ADMINISTRATION

**Preliminary
Damage Survey Results**

North of Juneau - Dodge County

Date	May 15, 2025
Time (Local)	5:48-5:52 pm
EF Rating	EF-1
Est. Peak Winds	95 mph
Path Length	4.26 miles
Max Width	75 yards
Injuries/Deaths	0/0



NATIONAL WEATHER SERVICE
OCEANIC AND ATMOSPHERIC ADMINISTRATION

**Preliminary
Damage Survey Results**

Mayville - Dodge County

Date	May 15, 2025
Time (Local)	5:57-6:09 pm
EF Rating	EF-2
Est. Peak Winds	120 mph
Path Length	9.44 miles
Max Width	300 yards
Injuries/Deaths	0/0





May 15, 2025 Severe Storms

Damaging Winds, Large Hail, and Tornadoes

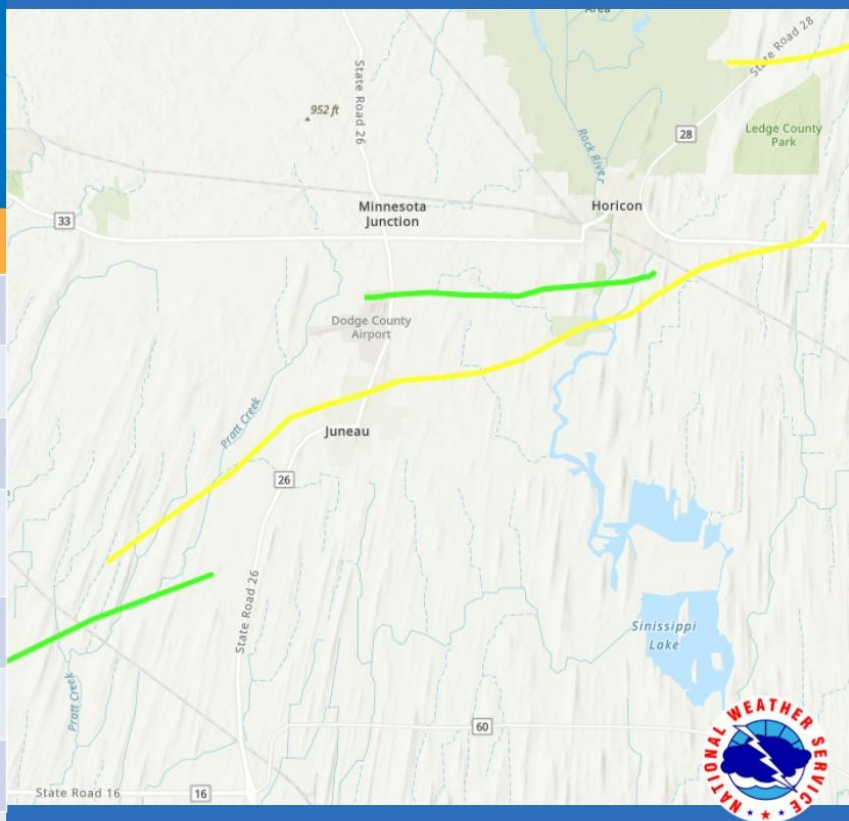
Confirmed Tornadoes - Continued

 **NATIONAL WEATHER SERVICE**
OCEANIC AND ATMOSPHERIC ADMINISTRATION

Preliminary Damage Survey Results

Juneau - Dodge County

Date	May 15, 2025
Time (Local)	5:38-5:56 pm
EF Rating	EF-2
Est. Peak Winds	120 mph
Path Length	11.76 miles
Max Width	500 yards
Injuries/Deaths	1/0



**National Oceanic and
Atmospheric Administration**
U.S. Department of Commerce

**National Weather Service
Milwaukee, WI**