

# 2016 Upper Michigan Fire Weather Annual Operating Plan

Marquette, MI  
(MQT)

Updated April 10, 2016



<b>I.</b>	<b>INTRODUCTION.....</b>	<b>4</b>
<b>II.</b>	<b>SERVICE AREA AND ORGANIZATIONAL DIRECTORY.....</b>	<b>5-21</b>
<b>A.</b>	<b>List of National Weather Service (NWS) offices and points of contact.....</b>	<b>5-9</b>
1.	Marquette, Michigan (MQT) office.....	5-6
2.	Surrounding National Weather Service offices.....	6-8
a)	Duluth, Minnesota (DLH) office.....	6-7
b)	Green Bay, Wisconsin (GRB) office.....	7
c)	Gaylord, Michigan (APX) office.....	7
d)	Grand Rapids (GRR) and Detroit (DTX), and Northern Indiana (IWX) office.....	8
3.	Other important NWS contacts.....	9
a)	National Fire Weather Program Leader and Operations Coordinator.....	9
b)	Regional Operational Service Meteorologist (ROSM).....	9
<b>B.</b>	<b>Participating agencies.....</b>	<b>10-22</b>
1.	Contacts and phone numbers.....	10-12
a)	Geographic Area Coordination Center.....	10
b)	Hiawatha National Forest, USFS.....	10
c)	Ottawa National Forest, USFS.....	10-11
d)	Isle Royale National Park, NPS.....	11
e)	Michigan Department of Natural Resources (DNR).....	11
f)	Pictured Rocks National Lakeshore, NPS.....	11-12
g)	Seney National Wildlife Refuge, USFW.....	12
h)	US Bureau of Indian Affairs (BIA).....	12
2.	Agency area maps.....	13-22
a)	Hiawatha National Forest, USFS.....	13-14
b)	Ottawa National Forest, USFS.....	15-16
c)	Isle Royale National Park, NPS.....	17-18
d)	Michigan Department of Natural Resources (DNR).....	19-20
e)	Pictured Rocks National Lakeshore, NPS.....	21
f)	Seney National Wildlife Refuge, USFW.....	22
<b>III.</b>	<b>SERVICES PROVIDED BY THE NATIONAL WEATHER SERVICE.....</b>	<b>23-54</b>
<b>A.</b>	<b>Fire weather products.....</b>	<b>23-50</b>
1.	Fire Weather Planning Forecast (ARBFWMQT).....	23-32
a)	Issuance (seasonal, daily).....	23
b)	Posting.....	23
c)	Content.....	23-32
2.	Conference Calls.....	33
3.	Fire Weather Matrix (ARBFWMMQT) National Fire Danger Rating System.....	34-37
a)	Issuance (seasonal, daily).....	35
b)	Content.....	36-37
c)	WIMS ID contact.....	37
4.	Site-specific wildland fire forecasts (Spot).....	38-41
a)	Criteria.....	38-39
b)	Content.....	39-41
c)	Procedures.....	41
5.	Wildfire Potential Statement (ARBRFDMQT).....	42-43
a)	Criteria.....	42
b)	Content.....	42-43

6.	Fire Weather Watch, Red Flag Warning Program (ARBRFWMQT).....	44-45
	a) <i>Criteria</i> .....	44
	b) <i>Content</i> .....	45
7.	Specific Online Products.....	46-50
	a) <i>Daily Fire Weather Briefing</i> .....	46
	b) <i>Fire Weather Graphics</i> .....	47
	c) <i>Hourly Weather Graph</i> .....	47-48
	d) <i>Weather Activity Planner</i> .....	48-49
	e) <i>Farsite Weather Input</i> .....	50
B.	Special services, procedures for obtaining and billing.....	51
C.	Alert Communications.....	52-53
	1. iNWS (Watch/Warning/Advisory Alerts).....	52
	2. NOAA Weather Radio.....	53
IV.	JOINT RESPONSIBILITIES.....	54
V.	SIGNING PAGE AND EFFECTIVE DATES OF THIS AOP.....	55

## I. INTRODUCTION

This Annual Operating Plan (AOP) will identify meteorological services to be provided by the Marquette, Michigan National Weather Service (NWS) Office. The area of responsibility encompasses all Upper Michigan. This includes areas of the Michigan Department of Natural Resources (DNR), Isle Royale National Park in the northwest, the Ottawa National Forest across the west, the Hiawatha National Forest central and east, Pictured Rocks National Lakeshore along portions of Lake Superior, Seney National Wildlife Refuge east, and the Bureau of Indian Affairs.

This NWS is supported by the Eastern Geographic Area Coordination Center (GACC).

Services provided by the NWS fall into two categories, traditional and special services. The traditional services are provided without cost and are coordinated between the user and the NWS office personnel. Most of these products are available upon request 24 hours a day throughout the year. Examples of traditional/core services include...

- Fire Weather Planning Forecast (FWF)
- Fire Weather Matrix (FWM) forecast for the National Fire Danger Rating System (NFDRS)
- Spot forecast
- Wildfire Potential Statement
- Fire Weather Watches and Red Flag Warnings
- Online Products (Fire Weather Graphics, Hourly Weather Graph, etc.)

Special services provided may include teaching weather related courses or an on-site Incident Meteorologist (IMET). Please reference the Geographic Area Mobilization Guide and/or the National Mobilization Guide for details about these special services.

## II. SERVICE AREA AND ORGANIZATIONAL DIRECTORY

### A. List of National Weather Service (NWS) offices and points of contact

#### 1. Marquette, Michigan (MQT) office

Fire Weather Season: Traditionally April 15 to November 1. Wildfires across our area can occur almost any time of the year; however, there are generally two peaks of increased fire danger. These time periods are in the spring prior to green-up, and in the fall curing period prior to significant snow. If unavailable, our primary backup office is Gaylord, Michigan.

Online: [www.weather.gov/mqt/fire](http://www.weather.gov/mqt/fire) (Fire Page – Upper MI)  
<http://spot.nws.noaa.gov/cgi-bin/spot/spotmon?site=mqt> (Spot Page)  
<http://graphical.weather.gov/sectors/mqtFireDay.php>  
(Graphical Forecast Fire Page – Upper MI)  
<http://digital.weather.gov/> (Graphical Forecast Fire Page – U.S.)  
[www.weather.gov/mqt](http://www.weather.gov/mqt) (Forecast Area main page)  
<http://weather.gov/fire> (National Page)

Phone: 906  
906  
906  
906-475-5212 public

Address: 112 Airpark Drive South  
Negaunee, MI 49866

Co-Fire Weather Program Leader:

Keith Cooley, [Keith.Cooley@noaa.gov](mailto:Keith.Cooley@noaa.gov)

Co-Fire Weather Program Leader:

Jason Alumbaugh, [Jason.Alumbaugh@noaa.gov](mailto:Jason.Alumbaugh@noaa.gov)

Additional Team Member(s):

Jon Voss, Jim Salzwedel

Meteorologist in Charge:

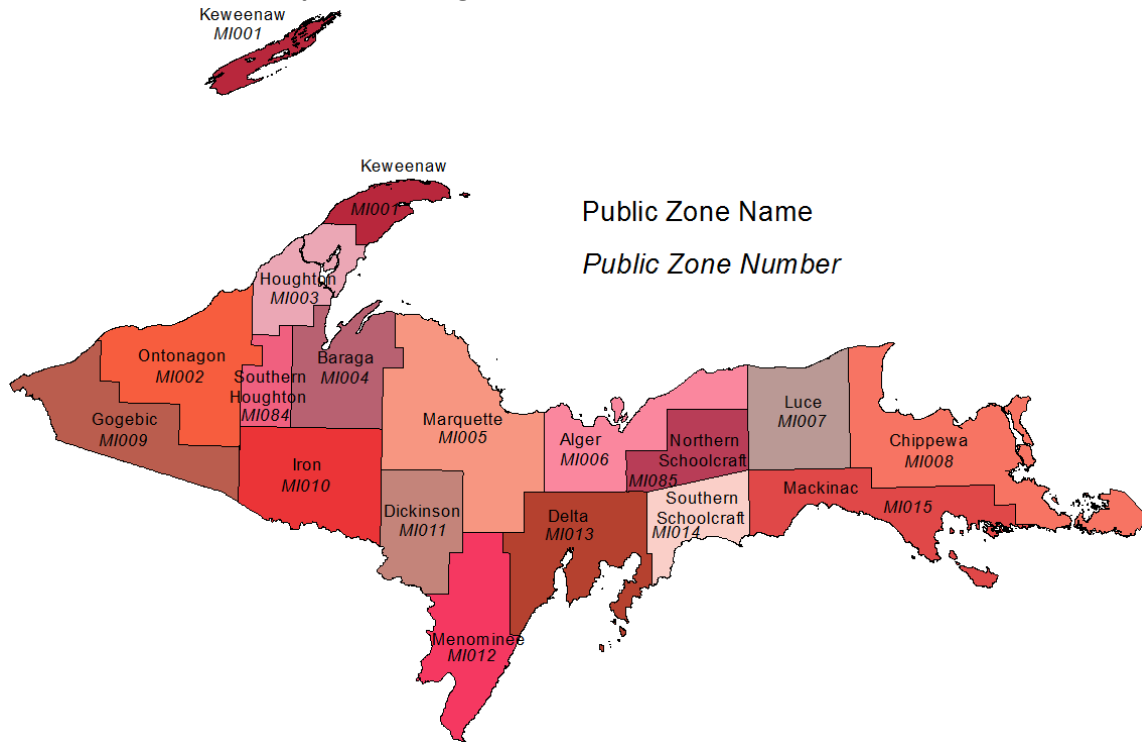
Robin Turner, [Robin.J.Turner@noaa.gov](mailto:Robin.J.Turner@noaa.gov)

Watch/Warning Criteria:

- A dry spell for over a week (shorter before spring green-up or after fall color)
- Sustained Wind Speed  $\geq 20$  mph (10 m ASOS-Airport winds)  
or  $\geq 15$  mph (20 ft RAWS winds)
- Relative Humidity 25% or less
- Temperature 70 F or greater

*Note: Temperature criteria is a soft criteria. Red Flag Warnings can be used for temperatures less than 70 degrees depending on other factors.*

## Marquette, Michigan Fire Weather Forecast Area



Public Zone Name  
Public Zone Number

**Upper Michigan Zone/County Names and Zone Numbers**

Alger	MIZ006	Keweenaw(including Isle Royale)	MIZ001
Iron	MIZ010	Luce	MIZ007
Chippewa	MIZ008	Mackinac	MIZ008
Baraga	MIZ005	Marquette	MIZ005
Delta	MIZ013	Menominee	MIZ012
Dickinson	MIZ011	Ontonagon	MIZ002
Gogebic	MIZ009	N. Schoolcraft	MIZ085
N. Houghton	MIZ003	S. Schoolcraft	MIZ014
S. Houghton	MIZ084		

## 2. Surrounding National Weather Service offices

### a) Duluth, Minnesota (DLH) office

Online: [www.weather.gov/dlh/fire](http://www.weather.gov/dlh/fire) (Fire Page)  
[www.weather.gov/dlh](http://www.weather.gov/dlh) (Forecast Area main page)

Phone: 218  
 218  
 218  
 218-729-6697 public

Address: 5027 Miller Truck Highway  
 Duluth, MN 55811-1442

Fire Weather Program Leader:  
 Amanda Graning (IMET), [Amanda.Graning@noaa.gov](mailto:Amanda.Graning@noaa.gov)

Assistant Fire Weather Program Leader:

Geoff Grochocinski, [Geoffery.Grochocinski@noaa.gov](mailto:Geoffery.Grochocinski@noaa.gov)  
Meteorologist in Charge:  
Michael Stewart, [Michael.Stewart@noaa.gov](mailto:Michael.Stewart@noaa.gov)  
Watch/Warning Criteria:  
Relative Humidity < = 25%  
Wind Speed > = 20 mph  
Temperature > = 75 degrees F

***b) Green Bay, Wisconsin (GRB) office***

Online: [www.weather.gov/grb/fire](http://www.weather.gov/grb/fire) (Fire Page)  
[www.weather.gov/grb](http://www.weather.gov/grb) (Forecast Area Main Page)  
Phone: 920  
920  
920  
920-494-2363 public  
Address: 2485 South Point Road  
Green Bay, WI 54313-5522  
Fire Weather Program Leader:  
Tim Kieckbusch, [Tim.Kieckbusch@noaa.gov](mailto:Tim.Kieckbusch@noaa.gov)  
Meteorologist in Charge:  
Matthew Lorentson, [Matthew.Lorentson@noaa.gov](mailto:Matthew.Lorentson@noaa.gov)  
Watch/Warning Criteria:  
Relative Humidity < = 25%  
Wind Speed (20 ft, 10 min avg.) > = 15mph  
~17 mph, 10m airport wind  
Temperature > = 75 degrees F

***c) Gaylord, Michigan (APX) office***

Online: [www.weather.gov/apx/fire](http://www.weather.gov/apx/fire) (Fire Page)  
[www.weather.gov/apx](http://www.weather.gov/apx) (Forecast Area Main Page)  
Phone: 989  
989  
989  
989-731-3384 public  
Address: 8800 Passenheim Road  
Gaylord, MI 49735-9454  
Fire Weather Program Leader:  
Jeffrey Lutz, [Jeffrey.Lutz@noaa.gov](mailto:Jeffrey.Lutz@noaa.gov)  
Meteorologist in Charge:  
Bruce Smith, [Bruce.Smith@noaa.gov](mailto:Bruce.Smith@noaa.gov)  
Watch/Warning Criteria:  
Relative Humidity < = 25%  
Sustained Wind Speed > = 20 mph (10 m ASOS winds) or  
>= 15 mph (20 ft RAWs winds)  
\*frequent gusts above wind criteria may be used in  
place of sustained winds.  
Temperature > = 75 degrees F

*d) Grand Rapids (GRR), Detroit (DTX), and Northern Indiana (IWX) offices*

Grand Rapids (GRR) [www.weather.gov/grr/fire](http://www.weather.gov/grr/fire) (Fire Page)  
Phone: 616  
616  
606  
Fire Weather Program Leader:  
Nathan Jeruzal, [Nathan.Jeruzal@noaa.gov](mailto:Nathan.Jeruzal@noaa.gov)  
Assistant Fire Weather Program Leader:  
Brian Meade, [Brian.Meade@noaa.gov](mailto:Brian.Meade@noaa.gov)  
Meteorologist in Charge:  
Daniel Cobb, [Daniel.Cobb@noaa.gov](mailto:Daniel.Cobb@noaa.gov)  
Watch/Warning Criteria:  
Relative Humidity < = 25%  
Sustained Wind Speed > = 20 mph (10 m ASOS winds) or >= 15 mph (20 ft RAWS winds)  
\*frequent gusts above wind criteria may be used in place of sustained winds.  
Temperature > = 75 degrees F

Detroit (DTX) [www.weather.gov/dtx/fire](http://www.weather.gov/dtx/fire) (Fire Page)  
Phone: 248  
248  
248  
248-620-9804 public  
Fire Weather Program Leader:  
Heather Orow, [Heather.Orow@noaa.gov](mailto:Heather.Orow@noaa.gov)  
Meteorologist in Charge:  
Richard Wagenmaker, [Richard.Wagenmaker@noaa.gov](mailto:Richard.Wagenmaker@noaa.gov)  
Watch/Warning Criteria:  
Relative Humidity < = 25%  
Sustained Wind Speed > = 20 mph (10 m ASOS winds) or >= 15 mph (20 ft RAWS winds)  
Temperature > = 75 degrees F

Northern Indiana (IWX) [www.weather.gov/iwx/fire](http://www.weather.gov/iwx/fire) (Fire Page)  
Phone: 574  
574  
574-834-1104 public  
Fire Weather Program Leader:  
Lonnie Fisher, [Lonnie.Fisher@noaa.gov](mailto:Lonnie.Fisher@noaa.gov)  
Meteorologist in Charge:  
Mark Frazier, [Mark.Frazier@noaa.gov](mailto:Mark.Frazier@noaa.gov)  
Watch/Warning Criteria:  
Relative Humidity < = 25%  
Sustained Wind Speed > = 20 mph (10 m ASOS winds) or >= 15 mph (20 ft RAWS winds)  
Temperature > = 75 degrees F



### 3. Other important NWS contacts

#### a) National Fire Weather Program Leader and Operations Coordinator

Online: <http://weather.gov/fire>  
Heath Hockenberry – Program Leader 208  
[Heath.Hockenberry@noaa.gov](mailto:Heath.Hockenberry@noaa.gov)  
Larry Van Bussum – Ops. Coordinator 208  
208  
[Larry.Vanbussum@noaa.gov](mailto:Larry.Vanbussum@noaa.gov)  
208  
Address: National Weather Service  
3833 South Development Avenue, Bldg. 3807  
Boise, ID 83705

#### b) Regional Operational Services Meteorologist (ROSM)

Online: [www.crh.noaa.gov](http://www.crh.noaa.gov)  
Chris Foltz – Central Region 816  
Headquarters Emergency Response Specialist 816  
Address: National Weather Service,  
Central Region Headquarters  
7220 NW 101<sup>st</sup> Terrace  
Kansas City, MO 64153

## B. Participating agencies

### 1. Contacts and phone numbers

#### a) *Geographic Area Coordination Center*

Online: <http://gacc.nifc.gov/eacc>  
Floor Coordinator 414  
414  
Address: Eastern Area Coordination Center  
626 East Wisconsin Avenue, Suite 500  
Milwaukee, WI 53202  
Stephen Marien – Fire Weather 651  
Program Manager 402  
651  
[Stephen\\_Marien@nps.gov](mailto:Stephen_Marien@nps.gov)  
Address: Mississippi National River and Recreation Area  
111 East Kellogg Blvd, Suite 150  
St. Paul, MN 55101

#### b) *Hiawatha National Forest, USFS*

Online: [www.fs.usda.gov/hiawatha](http://www.fs.usda.gov/hiawatha)  
Dispatch Center- Michigan Interagency 231  
Dispatch Center (MIDC) [MIDC@fs.fed.us](mailto:MIDC@fs.fed.us)  
MIDC manager – Debra-Ann Brabazon 231  
John Agner – Fire Management 906  
Officer 906  
[jagner@fs.fed.us](mailto:jagner@fs.fed.us)  
Eric Rebitzke– Assistant Fire 906  
Management Officer 906  
[erebitzke@fs.fed.us](mailto:erebitzke@fs.fed.us)  
Brenda Dale – East Zone FMO (St. Ignace) 906  
906  
[bdale@fs.fed.us](mailto:bdale@fs.fed.us)  
906  
906-428-5800 public  
Sam Duerksen - Central Zone FMO (Rapid River) (906) 474-6442 x121  
Address: 820 Rains Dr.  
Gladstone, MI 49837

#### c) *Ottawa National Forest, USFS*

Online: [www.fs.fed.us/r9/ottawa](http://www.fs.fed.us/r9/ottawa)  
Dispatch Center- Michigan Interagency 231  
Dispatch Center (MIDC) [MIDC@fs.fed.us](mailto:MIDC@fs.fed.us)  
MIDC manager – Debra-Ann Brabazon 231

John Agner – Fire Management Officer 906  
906  
[jagner@fs.fed.us](mailto:jagner@fs.fed.us)  
Eric Rebitzke – Assistant Fire Management Officer 906  
906  
[erebitzke@fs.fed.us](mailto:erebitzke@fs.fed.us)  
Forest Paukert – Fire Operations Specialist 906  
906  
906-358-4551 public  
Address: E23979 US Highway 2 East  
Watersmeet, MI 49969

**d) Isle Royale National Park, NPS**

Online: [www.nps.gov/isro](http://www.nps.gov/isro)  
Coral Conway – Chief Ranger 906  
906  
906-482-0984 public  
[coral\\_conway@nps.gov](mailto:coral_conway@nps.gov)  
Marshall Plumer – East District Ranger 906  
906  
[Marshall\\_Plumer@nps.gov](mailto:Marshall_Plumer@nps.gov)  
Address: 800 East Lakeshore Drive  
Houghton, MI 49931

**e) Michigan Department of Natural Resources (DNR)**

Online: [www.michigan.gov/dnr](http://www.michigan.gov/dnr)  
Acting Duty Officer 906  
906  
906-249-1497 public  
Celeste Chingwa – Resource Protection Manager [chingwac@michigan.gov](mailto:chingwac@michigan.gov)  
Bryce Avery – Fire Specialist [averyb1@michigan.gov](mailto:averyb1@michigan.gov)  
Keith Murphy – Fire Specialist [murphyk1@michigan.gov](mailto:murphyk1@michigan.gov)  
Debbie Wester – Dispatcher/Secretary [westerd@michigan.gov](mailto:westerd@michigan.gov)  
Address: 110 Ford Road  
Marquette, MI 49855

**f) Pictured Rocks National Lakeshore, NPS**

Online: [www.nps.gov/piro](http://www.nps.gov/piro)  
Matt Davis – Park Ranger 906  
906  
[matthew\\_davis@nps.gov](mailto:matthew_davis@nps.gov)  
Bruce Leutusher – Vegetation/Fuels 906  
906  
906-387-2607 public/headquarters  
906-387-3700 public/ Visitors Center

Address: N8391 Sand Point Road  
P.O. Box 40  
Munising, MI 49862-0040

***g) Seney National Wildlife Refuge, USFW***

Online: [www.fws.gov/refuge/seney/](http://www.fws.gov/refuge/seney/)

Gary Lindsay – MI Satellite Fire 906  
Management Officer 906  
906

[gary\\_lindsay@fws.gov](mailto:gary_lindsay@fws.gov)

Greg McClellan – Deputy Refuge 906  
Manager 906  
906

[greg\\_mcclellan@fws.gov](mailto:greg_mcclellan@fws.gov)

Sara Siekierski – Refuge Manager 906  
906-586-9851 public  
906

Address: USFWS Seney NWR  
1674 Refuge Entrance Road  
Seney, MI 49883

Dan Laber – Zone Fire Management 608  
Officer WI and MI 608

[daniel\\_labrer@fws.gov](mailto:daniel_labrer@fws.gov)

Address: USFW Necedah NWR  
N11385 Headquarters Road  
Necedah, WI 54646

***h) US Bureau of Indian Affairs (BIA)***

Will Wiggins – Fire Management Fuels 906  
Specialist 906  
906

[wwiggins@up.net](mailto:wwiggins@up.net) (primary)

[christopher.wiggins@bia.gov](mailto:christopher.wiggins@bia.gov) (secondary)

906

Address: 100 Hemlock Street  
Baraga, MI 49908

Scott Virden – 906  
Address: 2845 Ashmund Street  
Sault Sainte Marie, MI 49783

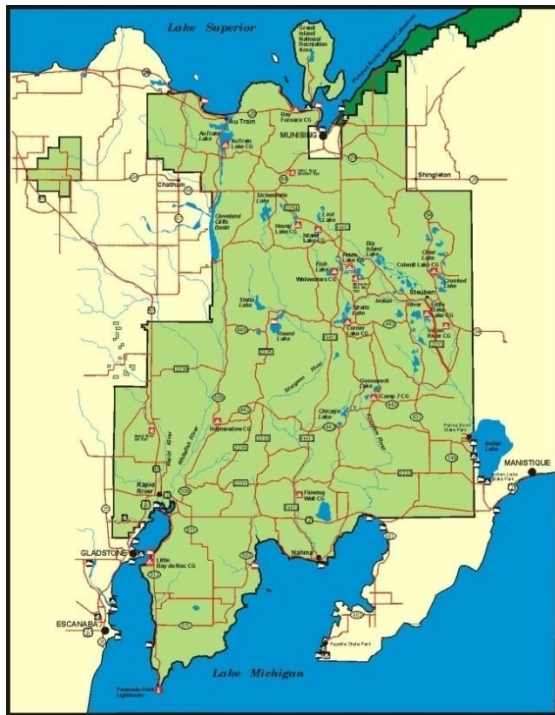
## 2. Agency area maps

### a) Hiawatha National Forest, USFS

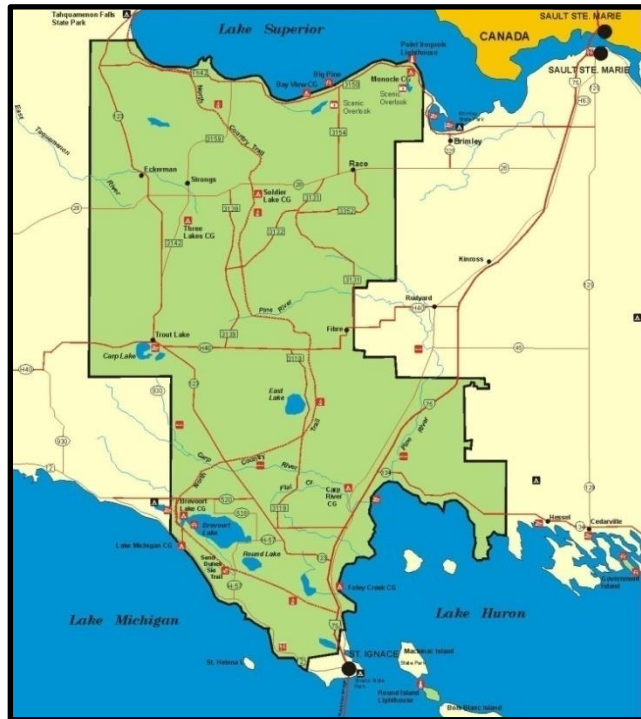
Images courtesy Hiawatha National Forest (<http://www.fs.usda.gov/hiawatha>)



Western Unit

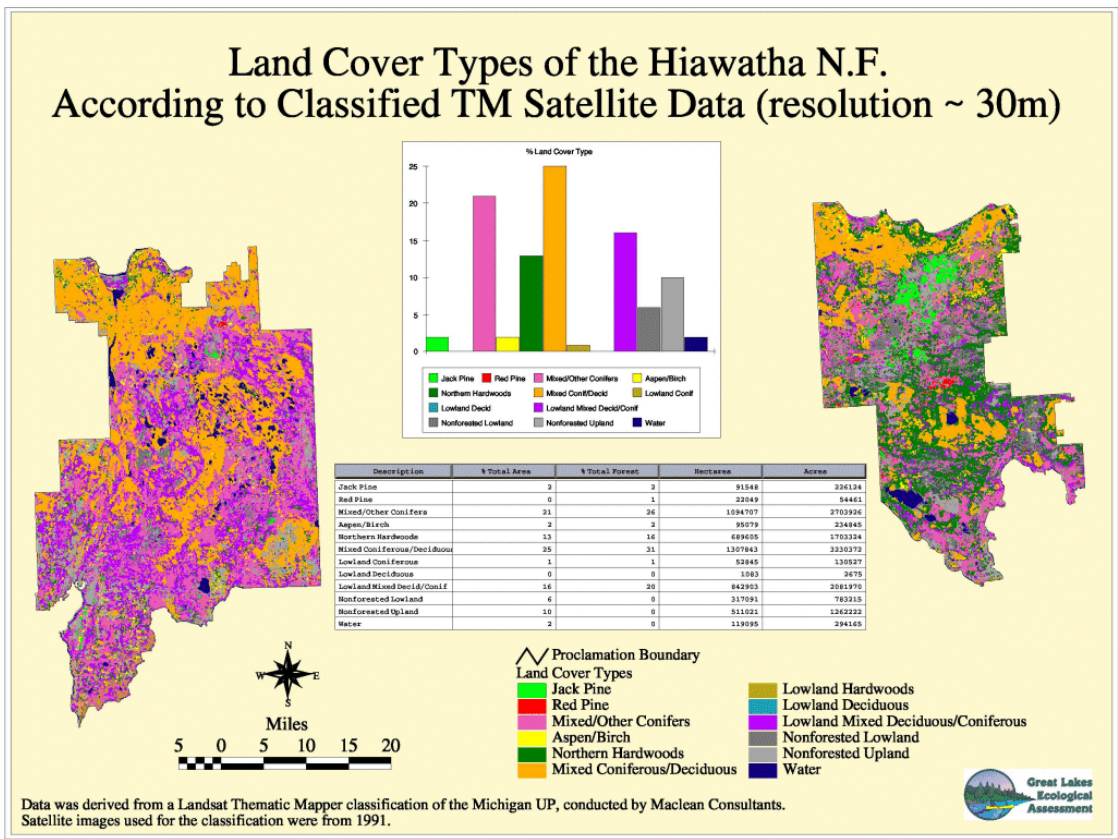
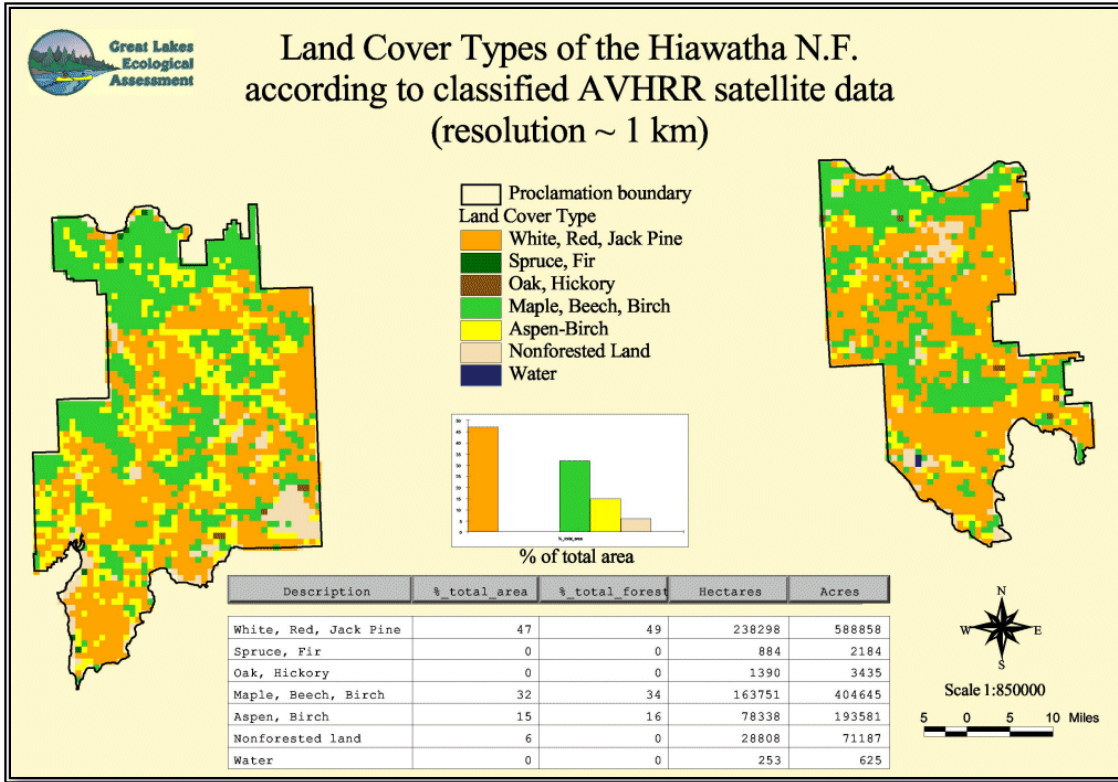


Eastern Unit



Land Cover Types image courtesy Great Lakes Ecological Assessment

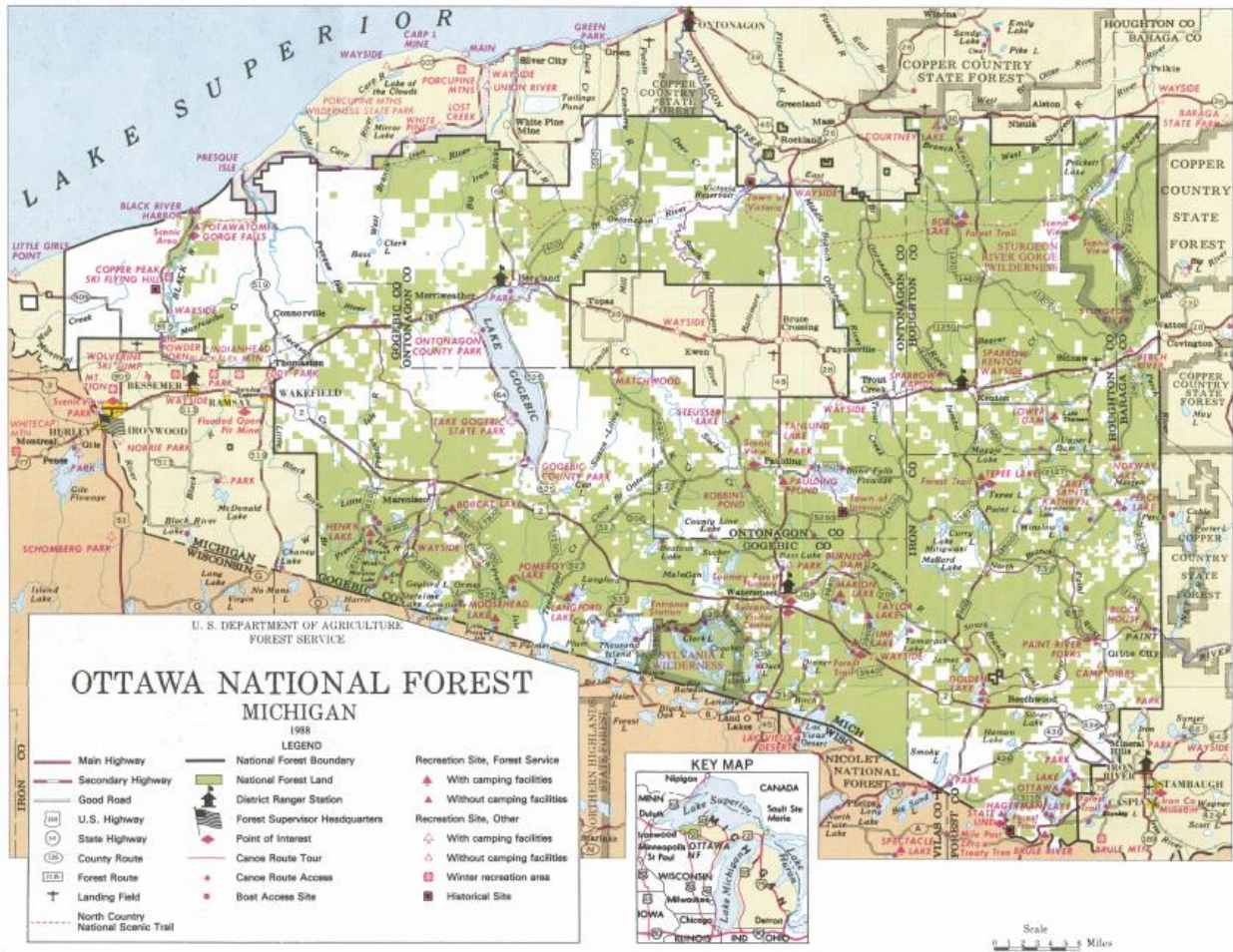
([http://www.ncrs.fs.fed.us/gla/existveg/images/hiaw\\_avhrr.gif](http://www.ncrs.fs.fed.us/gla/existveg/images/hiaw_avhrr.gif) and [http://www.ncrs.fs.fed.us/gla/existveg/hiawa\\_tm.htm](http://www.ncrs.fs.fed.us/gla/existveg/hiawa_tm.htm)) based off of 1991 satellite



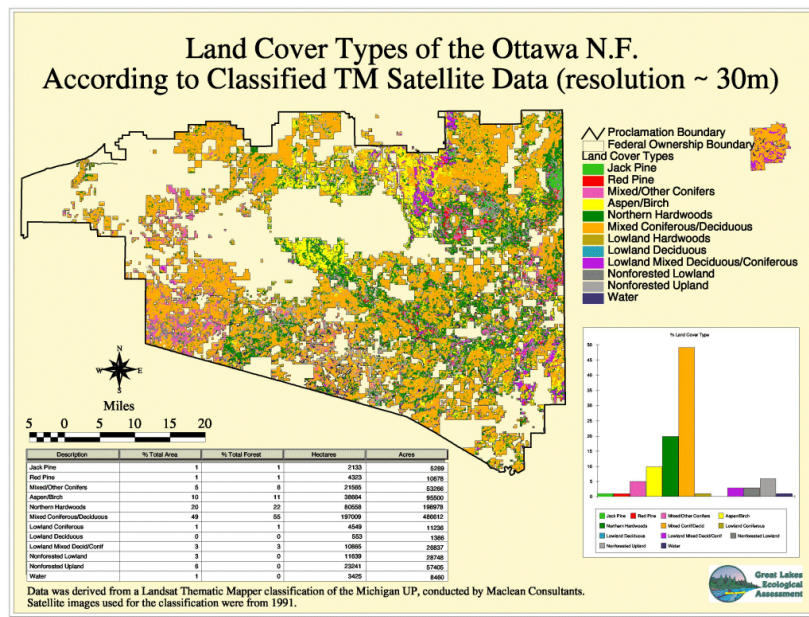
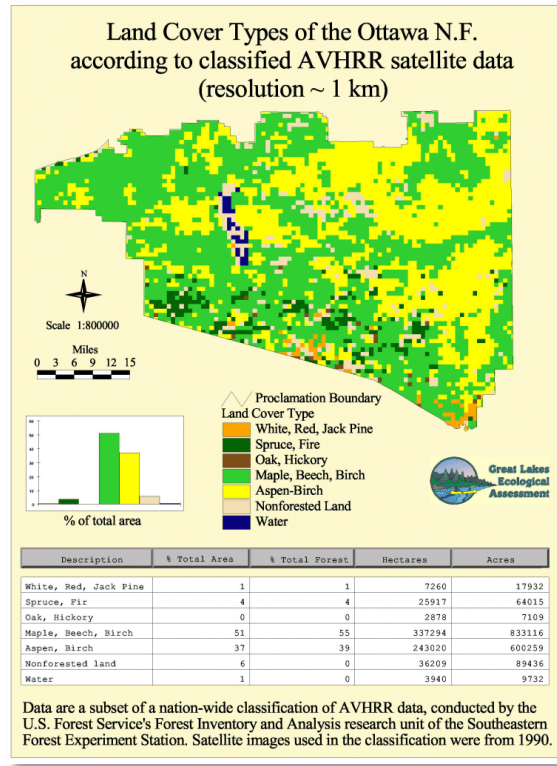
Data was derived from a Landsat Thematic Mapper classification of the Michigan UP, conducted by Maclean Consultants. Satellite images used for the classification were from 1991.

b) Ottawa National Forest, USFS

Image courtesy Ottawa National Forest (<http://www.fs.usda.gov/main/ottawa/maps-pubs>)



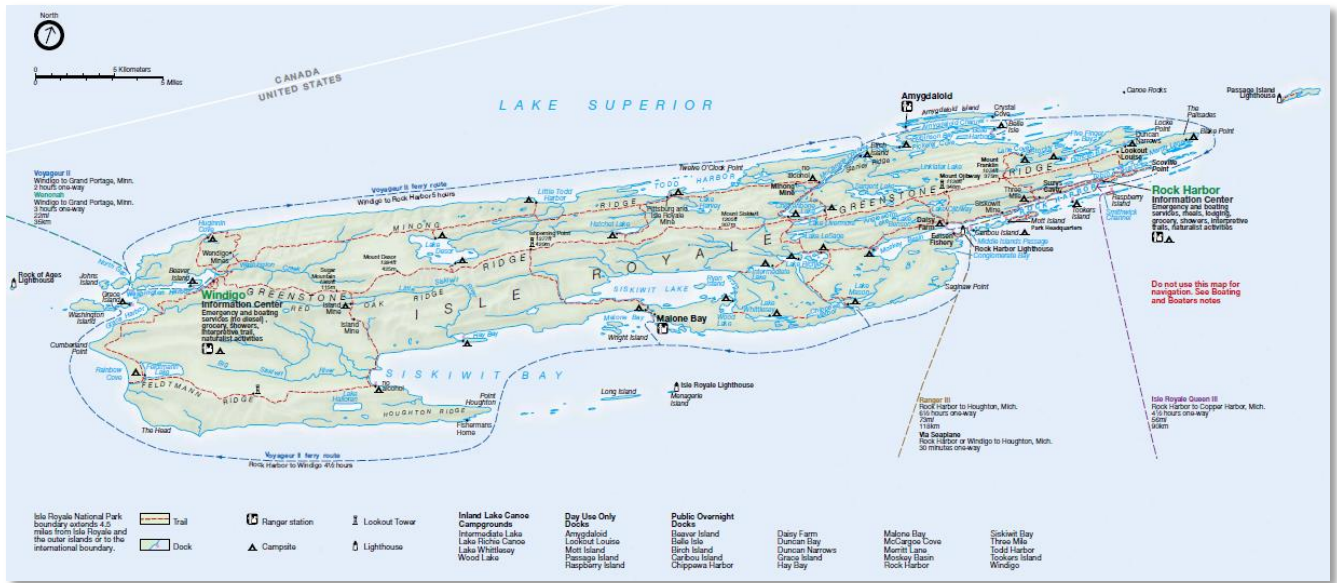
Land Cover Types image courtesy Great Lakes Ecological Assessment  
[http://www.ncrs.fs.fed.us/gla/existveg/ott\\_avhrr.htm](http://www.ncrs.fs.fed.us/gla/existveg/ott_avhrr.htm) and  
[http://www.ncrs.fs.fed.us/gla/existveg/otta\\_tm.htm](http://www.ncrs.fs.fed.us/gla/existveg/otta_tm.htm)



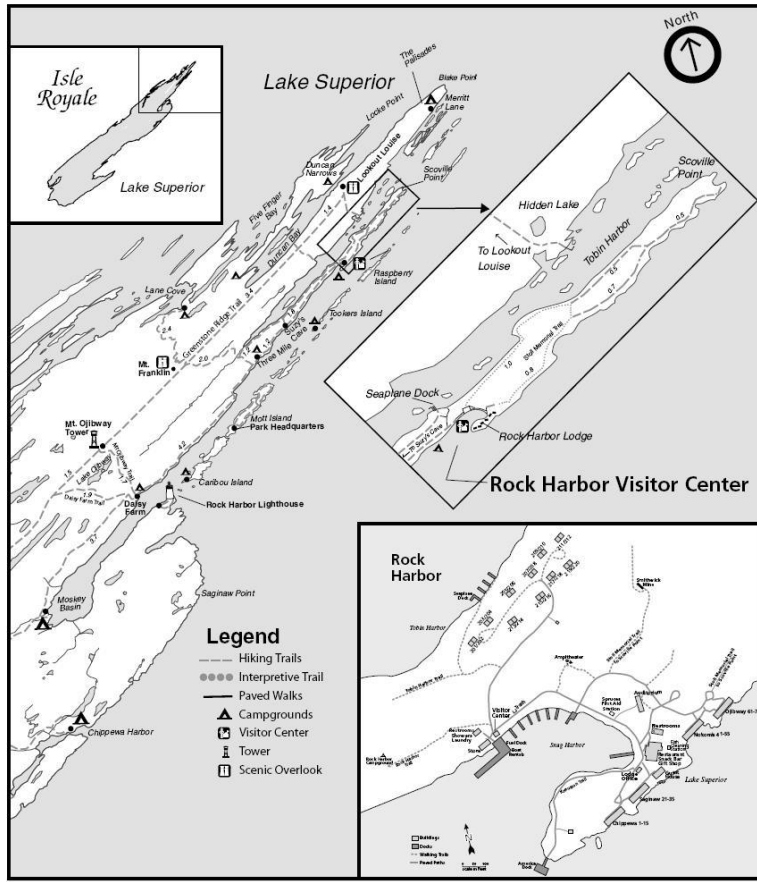


c) Isle Royale National Park, NPS

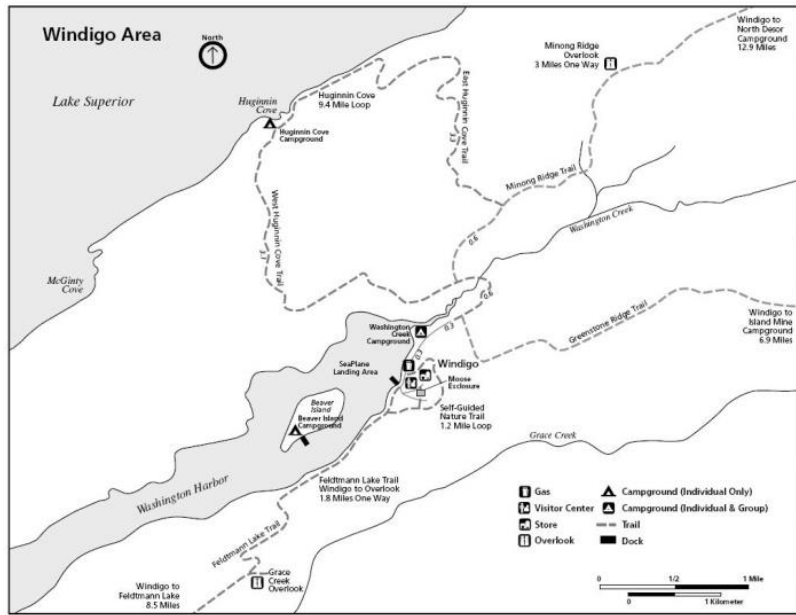
Images courtesy Isle Royale National Park (<http://www.nps.gov/isro/index.htm>)



### Rock Harbor Area



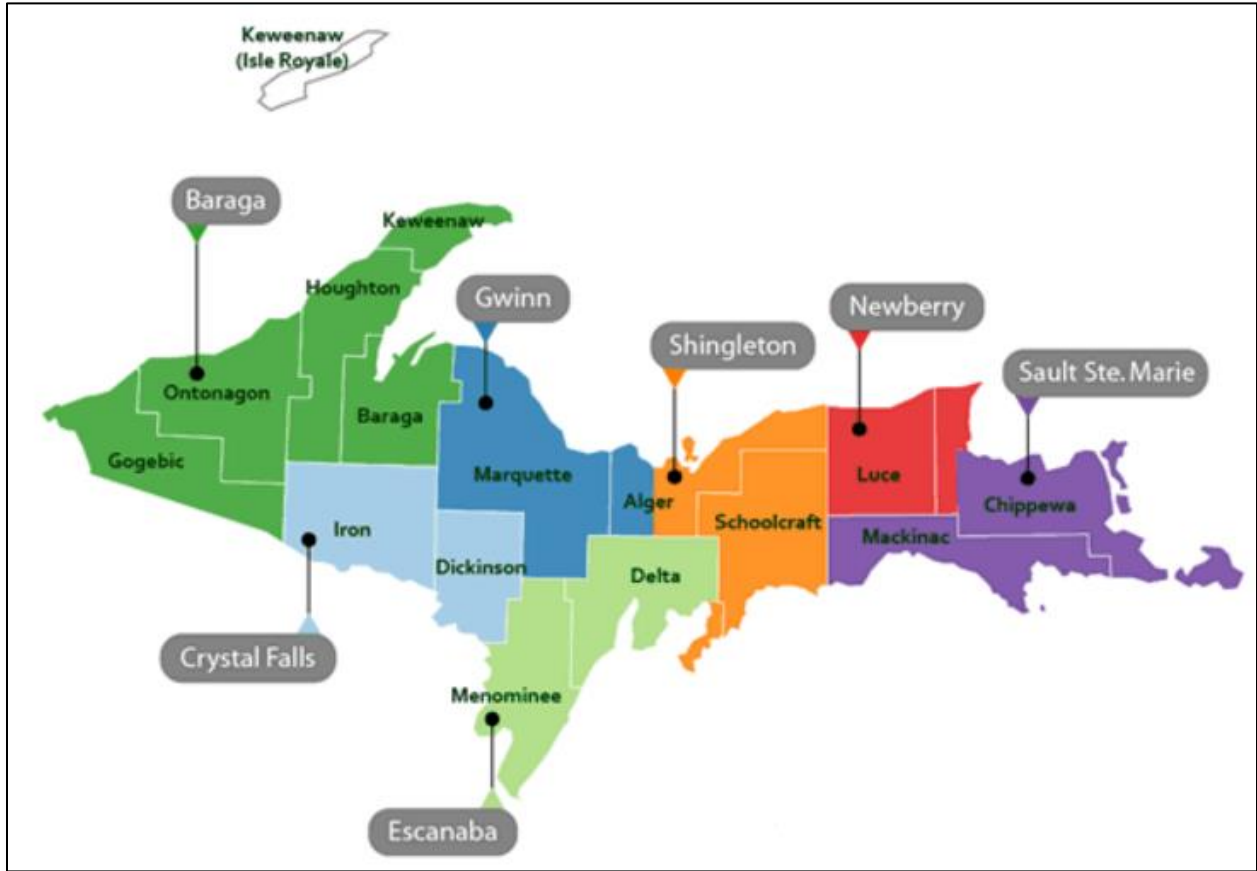
### Windigo Area



d) Michigan Department of Natural Resources (DNR)

Images courtesy Michigan Department of Natural Resources

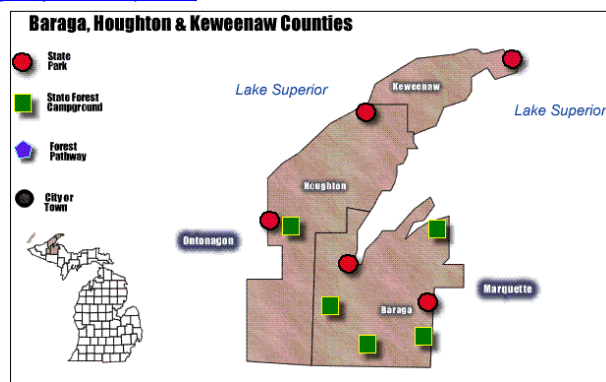
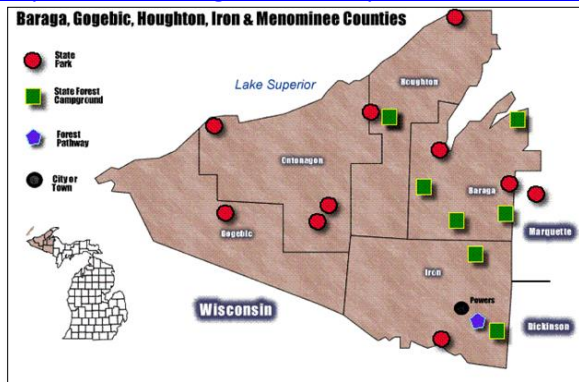
([http://www.michigan.gov/dnr/0,4570,7-153-30301\\_30505-66516--,00.html](http://www.michigan.gov/dnr/0,4570,7-153-30301_30505-66516--,00.html))

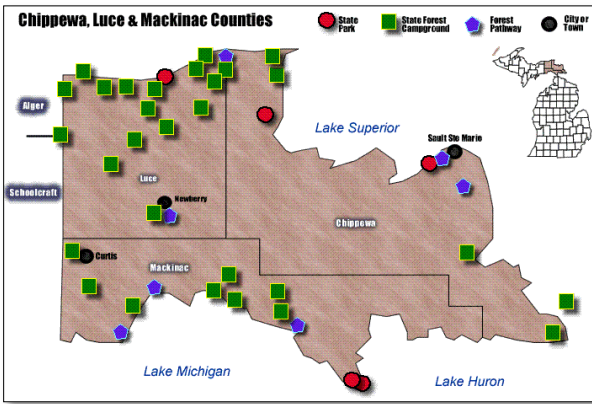
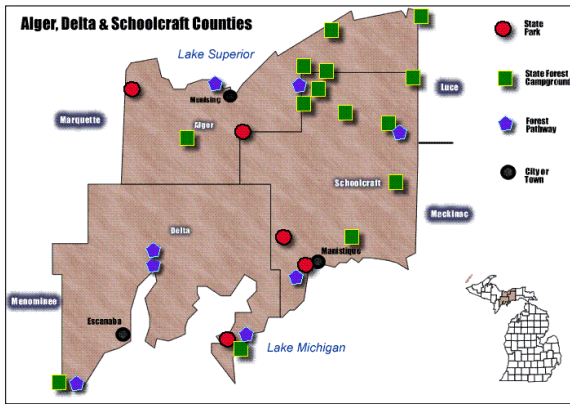
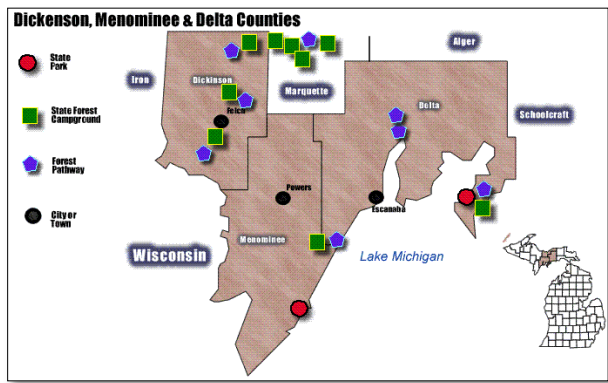
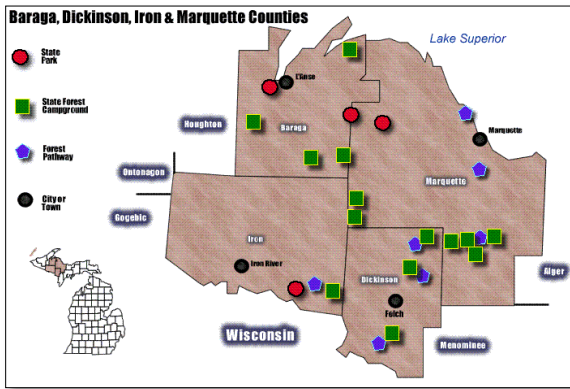


State Park, Forest Campground, and Pathways (by region)

<http://www.michigandnr.com/parksandtrails/parkmap.aspx>

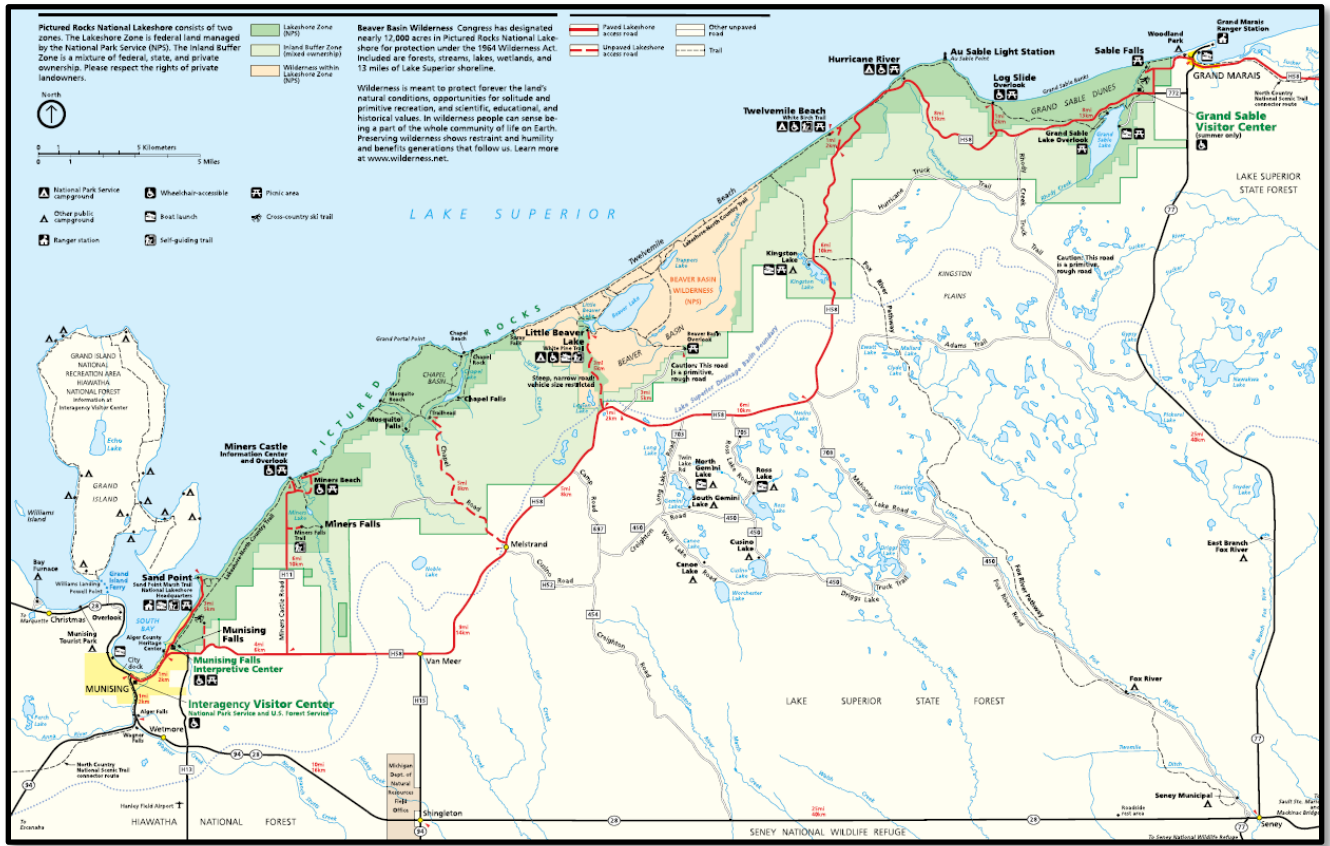
<http://www.michigandnr.com/parksandtrails/listing.aspx?list=parks>





e) Pictured Rocks National Lakeshore, NPS

Images courtesy Pictured Rocks National Lakeshore (<http://www.nps.gov/piro>)  
 Official Park Map and Guide (<http://www.nps.gov/piro/planyourvisit/brochures.htm>)

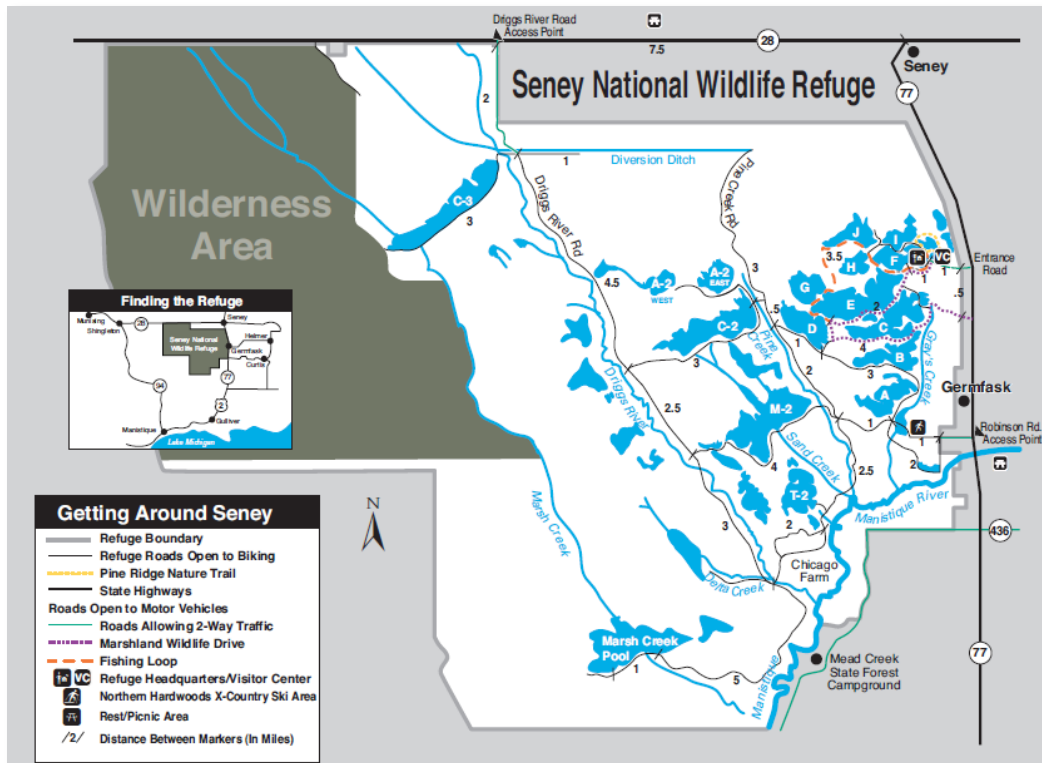


f) *Seney National Wildlife Refuge, USFW*

Seney National Wildlife Refuge also manages the following areas in the Marquette NWS forecast area ...

- **Harbor Island National Wildlife Refuge** – 695 acres one mile north of Drummond Island
- **West Huron Island lighthouse** – 3 miles off the southern shore of Lake Superior, 18 miles east of the Keweenaw Peninsula
- **Whitefish Point** (migratory bird reserve) – 33 acres adjacent to the Great Lakes Shipwreck Historical Museum

Image courtesy Seney National Wildlife Refuge (<http://www.fws.gov/uploadedFiles/snwrmap.pdf>)  
 Land Cover Map [http://www.fws.gov/uploadedFiles/ctypesmap09\\_small.pdf#](http://www.fws.gov/uploadedFiles/ctypesmap09_small.pdf#))



### III. SERVICES PROVIDED BY THE NATIONAL WEATHER SERVICE

#### A. Fire weather products

##### 1. Fire Weather Planning Forecast (ARBFWFMQT)

###### a) Issuance (seasonal, daily)

The National Weather Service in Marquette will produce the fire weather planning forecast during the fire season, which traditionally runs from April 15 to November 1. The start and end times are a collaborated between the National Weather Service and participating land management agencies. The forecast is then produced daily during the fire season, and is typically issued by 6 am local time. It will be updated during the day if significant differences are expected or occurring.

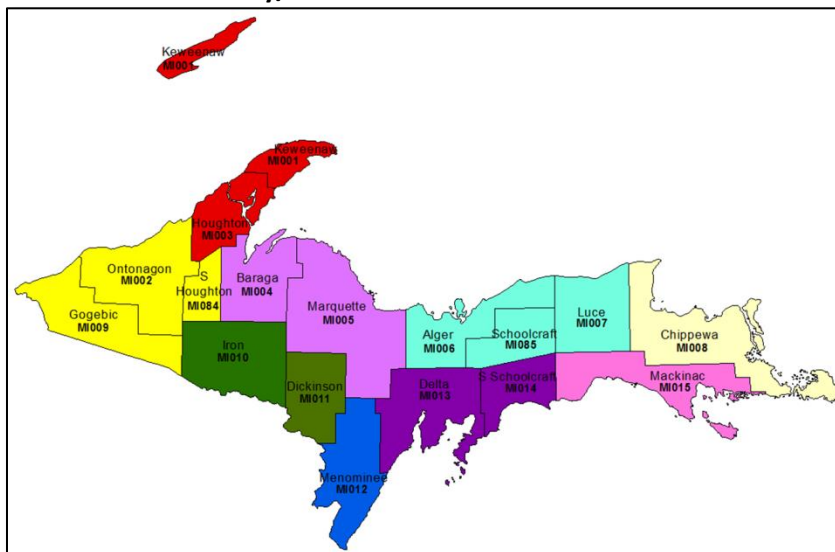
###### b) Posting

The primary way to receive our forecasts would be through our website, [www.weather.gov/up](http://www.weather.gov/up) and more specifically the Fire Weather link in the left column ([www.crh.noaa.gov/mqt/?n=firewx](http://www.crh.noaa.gov/mqt/?n=firewx)). Forecasts are also available through WIMS and GACC Predicted Service, if needed.

###### c) Content

This product usually has a set county/zone combination, which may be broken down further if certain headlines are issued (Wind Advisory, High Wind Warning, Fire Weather Watch, and/or Red Flag Warning). The current county/zone combination can be changed upon agency agreement. The forecast will include the next 3 weather periods in detail: today, tonight, and tomorrow. The following forecast example, for western Upper Michigan, is only a fraction of the entire forecast.

#### Traditional County/Zone Combination:



**Forecaster Note:** The FWF is created in GFE, under "FWF." If a NPW (Wind Advisory/High Wind Warning) or RFW (Red Flag Warning/Fire Weather Watch) have been issued, the formatter will automatically break out the appropriate counties. This will need to be double checked for Mackinac and Chippewa Counties.

FIRE WEATHER PLANNING FORECAST FOR UPPER MICHIGAN  
NATIONAL WEATHER SERVICE MARQUETTE MI  
427 AM EDT SAT NOV 1 2014

...DRY TODAY THEN A CHANCE OF SHOWERS ON SUNDAY...

.DISCUSSION...HIGH PRESSURE OVER ONTARIO THIS MORNING WILL BRING DRY WEATHER TO UPPER MICHIGAN TODAY AND TONIGHT BEFORE A LOW PRESSURE TROUGH MOVING IN FROM THE NORTHWEST BRINGS A CHANCE OF RAIN SUNDAY INTO SUNDAY NIGHT. HIGH PRESSURE WILL THEN RESULT IN DRY WEATHER AND A SLIGHT WARM UP FOR MONDAY AND TUESDAY. TEMPERATURES WILL AVERAGE WELL ABOVE NORMAL FROM SUNDAY INTO THE MIDDLE OF THE COMING WEEK.

MIZ002-009-084-021100-  
WEST - GOGEBIC...ONTONAGON AND SOUTHERN HOUGHTON COUNTIES-  
427 AM EDT SAT NOV 1 2014 /327 AM CDT SAT NOV 1 2014/

.TODAY...

SKY/WEATHER.....PARTLY CLOUDY.  
MAX TEMPERATURE.....AROUND 52.  
24 HR TREND.....UNCHANGED.  
MIN HUMIDITY.....30-35 PERCENT.  
24 HR TREND.....UNCHANGED.  
AIRPORT WINDS.....SOUTHEAST 5 MPH OR LESS.  
PCPN AMOUNT.....NONE.  
HOURS OF SUN.....7.  
LAL.....1.

.TONIGHT...

SKY/WEATHER.....MOSTLY CLOUDY.  
MIN TEMPERATURE.....32-37.  
24 HR TREND.....10 DEGREES WARMER.  
MAX HUMIDITY.....76-81 PERCENT INLAND TO 69 PERCENT AT THE SHORE.  
24 HR TREND.....28 PERCENT DRIER.  
AIRPORT WINDS.....SOUTHEAST 5 MPH OR LESS INCREASING TO SOUTH 5  
TO 10 MPH BY MIDNIGHT...THEN INCREASING TO 10  
TO 15 MPH LATE.  
PCPN AMOUNT.....NONE.  
LAL.....1.

.SUNDAY...

SKY/WEATHER.....MOSTLY CLOUDY. A SLIGHT CHANCE OF RAIN SHOWERS.  
MAX TEMPERATURE.....AROUND 54.  
MIN HUMIDITY.....60-65 PERCENT.  
AIRPORT WINDS.....SOUTH 10 TO 15 MPH BECOMING 15 TO 20 MPH  
BY LATE MORNING...THEN BECOMING 10 TO 15 MPH BY  
MID AFTERNOON.  
PCPN AMOUNT.....NONE TO 0.06 IN.  
HOURS OF SUN.....3.  
LAL.....1.

\$\$



.FORECAST DAYS 3 THROUGH 7...

.MONDAY...PARTLY TO MOSTLY CLOUDY. PATCHY FOG EARLY WEST AND CENTRAL. LOWS 36 TO 46. HIGHS 55 TO 63...WARMEST WEST. SOUTH WINDS 5 TO 10 MPH.

.TUESDAY...PARTLY TO MOSTLY CLOUDY. A CHANCE OF SHOWERS WEST. LOWS 46 TO 50. HIGHS 55 TO 63. SOUTH WINDS 10 TO 15 MPH.

.WEDNESDAY...A CHANCE OF SHOWERS. MOSTLY CLOUDY. LOWS 44 TO 50. HIGHS 55 TO 60. SOUTH WINDS 10 TO 15 MPH.

.THURSDAY...MOSTLY CLOUDY. A CHANCE OF LIGHT RAIN. A CHANCE OF SNOW SHOWERS LATE. LOW AROUND 43. HIGHS 49 TO 54.

.FRIDAY...COLDER. MOSTLY CLOUDY. A CHANCE OF RAIN AND SNOW SHOWERS. LOWS 30 TO 35 INLAND TO AROUND 37 AT THE SHORE. HIGHS 37 TO 42.

.OUTLOOK FOR SAT NOV 8 THROUGH FRI NOV 14...EXPECT BELOW NORMAL TEMPERATURES AND ABOVE NORMAL PRECIPITATION.

\$\$

.....SMOKE MANAGEMENT FORECAST DATA.....

THE FOLLOWING VALUES ARE FOR 1 PM EST (2 PM EDT) TODAY...

WIMS ID/	SITE/	HAINES INDEX	MIXING HEIGHT	TRANSPORT WIND	VENTILATION INDEX
471301 /	WAUSAUKEE/	4 LOW	/ 3000	/ NE 5	/ 150 (F)
200301	KENTON/	4 LOW	/ 3000	/ NE 5	/ 150 (F)
201004 /	MUNISING/	4 LOW	/ 3000	/ N 5	/ 175 (F)
201002 /	DOE LAKE/	4 LOW	/ 3500	/ N 5	/ 175 (F)
201103 /	HIGH BRIDGE/	4 LOW	/ 3300	/ N 5	/ 165 (F)
200703 /	GWINN/	4 LOW	/ 3200	/ N 5	/ 160 (F)
200903 /	LABRANCHE/	4 LOW	/ 3400	/ N 5	/ 170 (F)
200503 /	PELKIE/	4 LOW	/ 3600	/ N 3	/ 108 (P)
201504 /	RACO/	4 LOW	/ 3500	/ N 3	/ 105 (P)
200802 /	RANDVILLE/	4 LOW	/ 3100	/ N 5	/ 155 (F)
201401 /	REXTON/	4 LOW	/ 3500	/ N 4	/ 140 (F)
201505 /	RUDYARD/	4 LOW	/ 3700	/ N 3	/ 111 (P)
201202 /	SENEY/	4 LOW	/ 3600	/ N 4	/ 144 (F)
201302 /	SPINCICH LAKE/	4 LOW	/ 3500	/ N 4	/ 140 (F)
201102 /	STONINGTON/	4 LOW	/ 3300	/ N 5	/ 165 (F)
200102 /	WAKEFIELD/	4 LOW	/ 2700	/ NE 3	/ 81 (P)
200103 /	WATERSMEET/	4 LOW	/ 2800	/ N 3	/ 84 (P)
	/DRUMND ISLAND/	4 LOW	/ 3600	/ N 4	/ 144 (F)
	/ KEW/	4 LOW	/ 2700	/ NW 3	/ 81 (P)

THE FOLLOWING VALUES ARE FOR 1 PM EST (2 PM EDT) SUN...

WIMS ID/	SITE/	HAINES INDEX	MIXING HEIGHT	TRANSPORT WIND	VENTILATION INDEX
471301 /	WAUSAUKEE/	2 VERY LOW	/ 2000	/ S 23	/ 460 (G)
200301 /	KENTON/	2 VERY LOW	/ 2000	/ S 23	/ 460 (G)
201004 /	MUNISING/	4 LOW	/ 2000	/ S 26	/ 520 (G)
201002 /	DOE LAKE/	4 LOW	/ 2000	/ S 26	/ 520 (G)
201205 /	HIGH BRIDGE/	4 LOW	/ 2100	/ S 24	/ 504 (G)
200703 /	GWINN/	2 VERY LOW	/ 2000	/ S 27	/ 540 (G)
200903 /	LABRANCHE/	2 VERY LOW	/ 2300	/ S 24	/ 552 (G)
200503 /	PELKIE/	2 VERY LOW	/ 2200	/ SW 28	/ 616 (E)

201504 /	RACO/	4 LOW	/	2200	/	S 21	/	462 (G)	
200802 /	RANDVILLE/	2 VERY LOW	/	2200	/	S 25	/	550 (G)	
201401 /	REXTON/	4 LOW	/	1900	/	S 20	/	380 (G)	
201505 /	RUDYARD/	4 LOW	/	2300	/	S 19	/	437 (G)	
201202 /	SENEY/	4 LOW	/	2300	/	S 24	/	552 (G)	
201302 /	SPINCICH LAKE/	4 LOW	/	2100	/	S 24	/	504 (G)	
201102 /	STONINGTON/	3 VERY LOW	/	2200	/	S 24	/	528 (G)	
200102 /	WAKEFIELD/	2 VERY LOW	/	1900	/	SW 31	/	589 (G)	
200103 /	WATERSMEET/	2 VERY LOW	/	1700	/	SW 31	/	527 (G)	
	/DRUMND ISLAND/	4 LOW	/	2800	/	S 20	/	560 (G)	
	/	KEW/	2 VERY LOW	/	1000	/	SW 27	/	270 (F)

NOTE: MIXING HEIGHTS ARE IN FEET ABOVE GROUND LEVEL  
TRANSPORT WINDS ARE IN MILES PER HOUR

.....

THE FOLLOWING IS POINT FORECAST INFORMATION VALID AT 1 PM EST.  
NOTE THAT THE QPF IS FROM 7 AM TO 1 PM EST. ALSO...WIND SPEEDS HAVE  
BEEN REDUCED BY A FACTOR OF 0.7 BY THE REQUEST OF LOCAL FIRE OFFICIALS.

WIMS ID/	SITE/TEMP/	RH/WSPD/WGUST/WDIR/	QPF	
471301 /	WAUSAUKEE/	47/ 45/ 4/ 8/	E/0.00	
200301 /	KENTON/	46/ 43/ 2/ 2/	E/0.00	
201004 /	MUNISING/	45/ 45/ 1/ 1/	NE/0.00	
201002 /	DOE LAKE/	45/ 45/ 1/ 1/	NE/0.00	
201205 /	HIGH BRIDGE/	45/ 47/ 2/ 2/	NE/0.00	
200703 /	GWINN/	45/ 46/ 1/ 1/	E/0.00	
200903 /	LABRANCHE/	46/ 45/ 2/ 2/	E/0.00	
200503 /	PELKIE/	46/ 48/ 1/ 1/	SE/0.00	
201504 /	RACO/	43/ 48/ 2/ 2/	N/0.00	
200802 /	RANDVILLE/	47/ 45/ 1/ 1/	E/0.00	
201401 /	REXTON/	44/ 45/ 2/ 2/	N/0.00	
201505 /	RUDYARD/	42/ 49/ 3/ 5/	N/0.00	
201202 /	SENEY/	44/ 45/ 1/ 1/	N/0.00	
201302 /	SPINCICH LAKE/	44/ 47/ 2/ 2/	N/0.00	
201102 /	STONINGTON/	45/ 48/ 2/ 2/	E/0.00	
200102 /	WAKEFIELD/	48/ 41/ 1/ 1/	SE/0.00	
200103 /	WATERSMEET/	47/ 45/ 1/ 1/	SE/0.00	
	/DRUMND ISLAND/	42/ 58/ 1/ 1/	N/0.00	
	/	KEW/	45/ 55/ 2/ 2/	S/0.00

Time of issuance is located in the header of the product and is given in local time.

A headline is usually added, which describes the most important features of the period. In the case of a Red Flag Warning or Fire Weather Watch, information the reason, time frame, and areal coverage will be discussed.

Example:

...RED FLAG WARNING TODAY FOR SOUTH CENTRAL UPPER MICHIGAN INCLUDING PORTIONS OF THE OTTAWA NATIONAL FOREST FOR LOW HUMIDITY AND STRONG WIND...

.DISCUSSION...

The discussion is a brief synopsis of the current conditions and what can be expected over the next 2 days, but may extend farther out if conditions are expected to significantly influence fire operations.

It will include the mention of major weather features expected to affect the forecast area, along with any fire weather specific concerns of low humidity, high winds, high temperatures, or significant frost. We will make every effort to not use the phrases “near red flag conditions” or “fire danger,” as this may create confusion. The discussion should be 8 lines or less, unless extreme fire weather deems otherwise.

**SKY/WEATHER**

The prevailing sky conditions across the area, given as Clear, Sunny, Mostly Sunny, Partly Cloudy, Partly Sunny, Mostly Cloudy, or Cloudy. There is a wide variety of weather options including a chance of rain showers, or a chance of showers and thunderstorms.

The chance of precipitation ranges from 0 to 100 percent. This value indicates the percent probability that any one location will receive measurable rain of 0.01 inches or greater.

<b>0 - 14%</b>	=	None, unless flurries, sprinkles, or drizzle
<b>15 - 29%</b>	=	Slight chance or isolated
<b>30 - 59%</b>	=	Chance or scattered
<b>60 - 79%</b>	=	Likely or numerous
<b>80 - 100%</b>	=	Definite

**MAX/MIN TEMPERATURE**

**24 HOUR TREND**

Maximum and minimum temperatures are forecast in degrees Fahrenheit. Maximum temperatures will be given during the daytime hours, and minimum temperatures for the overnight. 24 Hour Trend is a value, positive or negative, depicting the difference between the maximum or minimum temperatures of the previous day to those expected that period.

**MAX/MIN HUMIDITY**

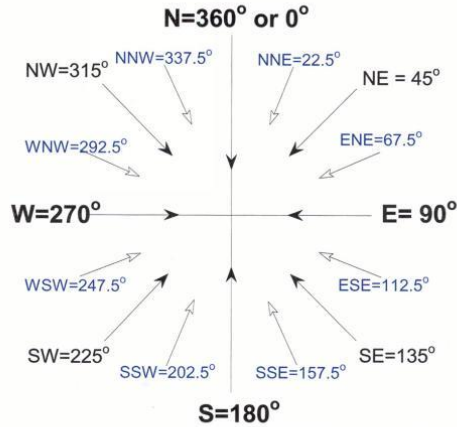
**24 HR TREND**

The relative humidity is the ratio, in percent, of the amount of moisture in the air compared to the amount the air could hold if it were fully saturated (100%). Maximum values are given for the overnight periods, while minimum values are for the daytime hours.

**AIRPORT WINDS**

This value is a combination of wind direction and speed in mph. Significant gusts or erratic wind speed or direction changes will be included. Direction is given in the 8 cardinal points; the direction from which the wind is blowing. The 8 cardinal points are N, NE, E, SE, S, SW, W, and NW. Wind speed is given in miles per hour. Currently at the National Weather Service Office in Marquette, MI, the wind we place in this parameter is the traditional airport wind, or 10-meter (33-foot) wind, titled *Wind Speed and Direction, Surface Wind*, or just *Wind* in our graphical and text based products. The National Weather Service directive 10-401: Fire Weather Services Product Specification states, “Wind will be derived from the local surface wind grid which approximates the 20 foot, 10 minute average.” Due to land cover and specific location, a correction factor may be needed to get the 20-foot (\*0.7 is standard for the table below), mid flame, or other wind value of interest.

Converting Degrees Azimuth to Wind Direction

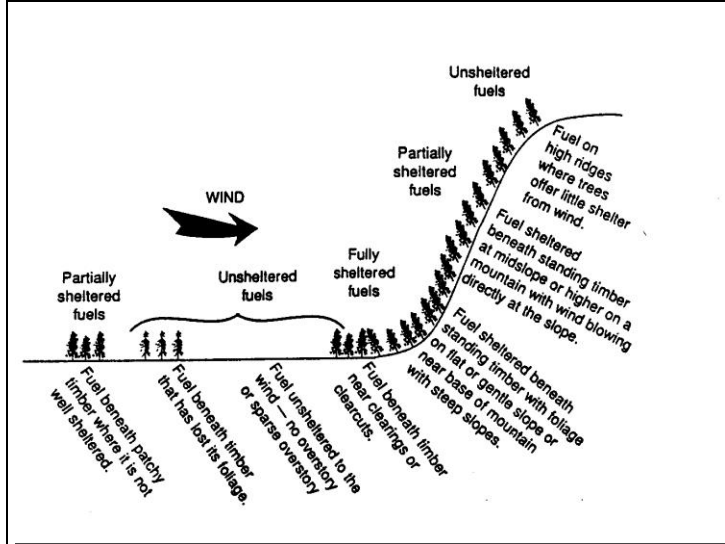


(The wind direction is defined as the direction from which the wind is blowing.)

MI DNR / US BEHAVE Wind speed & Fire Shape

WIND ADJUSTMENT TABLE		MIDFLAME WINDSPEED							
Airport Winds (mph)		Fire Weather Obs		Unsheltered Fuels			Partial Shelter	Fully Sheltered	
		10m	20ft	FM 4	FM 13	Others		Open	Dense
1.0	0.9	0.8	0.7	0.6	0.5	0.4	0.3	0.2	0.1
1	1	1	1	1	1	0	0	0	0
2	2	2	1	1	1	1	1	0	0
3	3	2	2	2	2	1	1	1	0
4	4	3	3	2	2	2	1	1	0
5	5	4	4	3	3	2	2	1	1
6	5	5	4	4	3	2	2	1	1
7	6	6	5	4	4	3	2	1	1
8	7	6	6	5	4	3	2	2	1
9	8	7	6	5	5	4	3	2	1
10	9	8	7	6	5	4	3	2	1
11	10	9	8	7	6	4	3	2	1
12	11	10	8	7	6	5	4	2	1
13	12	10	9	8	7	5	4	3	1
14	13	11	10	8	7	6	4	3	1
15	14	12	11	9	8	6	5	3	2
16	14	13	11	10	8	6	5	3	2
17	15	14	12	10	9	7	5	3	2
18	16	14	13	11	9	7	5	4	2
19	17	15	13	11	10	8	6	4	2
20	18	16	14	12	10	8	6	4	2
21	19	17	15	13	11	8	6	4	2
22	20	18	15	13	11	9	7	4	2
23	21	18	16	14	12	9	7	5	2
24	22	19	17	14	12	10	7	5	2
25	23	20	18	15	13	10	8	5	3
26	23	21	18	16	13	10	8	5	3
27	24	22	19	16	14	11	8	5	3

28	25	22	20	17	14	11	8	6	3
29	26	23	20	17	15	12	9	6	3
30	27	24	21	18	15	12	9	6	3
40	36	32	28	24	20	16	12	8	4
50	45	40	35	30	25	20	15	10	5



1. No Wind Adjustment Downhill at night.
2. Generally, NWS wind forecasts are based on winds recorded at airports. These sites are usually much more exposed than our fire weather recording stations.
3. **Eye level winds** are the most appropriate to use in making fire behavior predictions in the US BEHAVE system. However, RAWs record windspeeds at **20 ft**. If you are using a NWS forecast product, or obtaining wind readings from a mast at 10m or 20ft at one of your fire weather sites, the eye level winds may be estimated from the chart above.

MI DNR CCFDRS Wind Speed & Fire Shape

Airport Winds (mph)	Fire Weather Obs Windspeed, mph		Eye Level Windspeed, mph		Fire Shape Length:Width	
	10m	20ft	Unsheltered	Sheltered	Unshelt.	Shelt.
	10m	20ft	Unsheltered	Sheltered	Unshelt.	Shelt.
1.0	0.8	0.7	0.5	0.3	O1a, O1b	C,M,D,S
1	1	1	1	0	1.4	1.0
2	2	1	1	1	1.4	1.0
3	2	2	2	1	1.4	1.0
4	3	3	2	1	2.3	1.1
5	4	4	3	2	2.6	1.2
6	5	4	3	2	2.9	1.3
7	6	5	4	2	3.2	1.4
8	6	6	4	2	3.2	1.4
9	7	6	5	3	3.4	1.6
10	8	7	5	3	3.6	1.8
11	9	8	6	3	3.8	1.9
12	10	8	6	4	4.0	2.1
13	10	9	7	4	4.0	2.1
14	11	10	7	4	4.2	2.3
15	12	11	8	5	4.4	2.5
16	13	11	8	5	4.5	2.7
17	14	12	9	5	4.6	2.9
18	14	13	9	5	4.7	2.9
19	15	13	10	6	4.8	3.1
20	16	14	10	6	5.0	3.3
21	17	15	11	6	5.1	3.5
22	18	15	11	7	5.2	3.7

23	18	16	12	7	5.2	3.7
24	19	17	12	7	5.4	3.9
25	20	18	13	8	5.5	4.1
26	21	18	13	8	5.6	4.3
27	22	19	14	8	5.8	4.5
28	22	20	14	8	5.8	4.5
29	23	20	15	9	5.9	4.7
30	24	21	15	9	6.0	4.9
40	32	28	20	12	6.3	5.4
50	40	35	25	15	6.9	6.4

Generally, NWS wind forecasts are based on winds recorded at airports. These sites are usually much more exposed than RAWs.

**10 m** winds are the most appropriate to use in determining Initial Spread Index (ISI) and making fire behavior predictions. However, our fire weather recording stations record windspeeds at **20 ft**. If you are taking eye level winds, working with a NWS forecast product, or obtaining 20 ft readings from our fire weather sites, the 10 m winds may be estimated from the chart above.

**PCPN AMOUNT**

Precipitation amount is given in hundredths of an inch (in), and is the average amount expected when precipitation is forecast. When the chance of precipitation is 14% or less a value of 0 will be given. At values at or above 15%, a range of probably values is given (example 0.12 to 0.25 in). A chance of precipitation (up to 60%) may also begin with a range of no precipitation, at the discretion of the forecasters (example, None to 0.12 in). This may be appropriate when spotty showers are expected or event uncertainty is high.

**LAL**

LAL or Lightning Activity Level describes the intensity or frequency of thunderstorms if forecast, otherwise a value of 1 is given. Since the objective is to describe the lightning activity, lightning counts take precedence over the cloud-storm-rain narrative descriptions. For instance, if the clouds fit the LAL 3 descriptive criteria, but the lightning average 3 cloud-to-ground discharges per minute, the LAL should be classified as a 4.

<i>Lightning Activity Level Values</i>		
	<i>Cloud and Storm Development</i>	<i>Cloud to Ground Lightning Strikes 5 min (15 min)...areal coverage</i>
1	No Thunderstorms	None...0%
2	Cumulus clouds are common but only a few reach the towering cumulus stage. Light rain will occasionally reach the ground. Lightning is very infrequent.	1-5 (1-8)...1-14%
3	Towering cumulus covers less than two-tenths of the sky. Thunderstorms are few, but two to three must occur within the observation area. Light to moderate rain will reach the ground, and lightning is infrequent.	6-10 (9-15)...15-24%
4	Towering cumulus covers two to three-tenths of the sky. Thunderstorms are scattered. Moderate rain is common and	11-15 (16-25)...25-54%

	lightning is frequent.	
5	Towering cumulus and thunderstorms are numerous, covering more than three-tenths of the sky. Rain is moderate to heavy, with frequent and intense lightning.	>15 (>25)...>54%
6	Similar to LAL 3 except thunderstorms are dry.	

**.FORECAST DAYS 3 THROUGH 7...**

This portion of the forecast will contain general temperatures, sky conditions, and precipitation expected through the remainder of the 7 day forecast period. Wind direction and speed will be included through day 5, with gusts added when they are significant (typically over 35 mph).

**.OUTLOOK FOR 8 TO 14 DAYS...**

This extended outlook is taken directly from the daily forecast produced by the Climate Prediction Center, <http://www.cpc.ncep.noaa.gov/products/predictions/814day/> . It includes temperature and precipitation probabilities compared to seasonal normal values for the time periods. Values of near normal, above normal, or below normal will be given.

**.....SMOKE MANAGEMENT FORECAST DATA.....**

This section includes the 1 pm EST (2 pm EDT) Haines Index, Mixing Height, Transport Winds, and Ventilation Index for different RAWs sites for current day and the next day (day 2).

**HAINES INDEX**

Haines Index is the sum of a stability term and a moisture term. The sum provides an indication of the potential for wildfire growth and extreme behavior of a fire on a given day. A Haines Index of 2-3= Very Low, 4= Low, 5=Moderate, and 6= High. We use the low-elevation formula, which is as follows:

<b>Stability Term (T950-T850)</b>	<b>Moisture Term (T850-Td850)</b>
<b>1...3 C or less</b>	<b>1...5 C or less</b>
<b>2...4 to 17 C</b>	<b>2...6 to 9 C</b>
<b>3...8 C or greater</b>	<b>3...10 C or greater</b>

**MIXING HEIGHT**

The mixing height is the depth of the unstable air in the boundary layer and is used for forecasting smoke or pollutant trajectories, in feet above ground level (FT-AGL). In other words, it's the layer in the atmosphere from the surface to the first inversion layer. This is the layer where vigorous mixing occurs due to convection. Quite variable in space and time, the mixed-layer depth typically increases during fair-weather daytime over land from tens of meters (around a hundred feet or less) shortly after sunrise to 1-4 km (about 3,000 to 13,000 feet) before sunset, depending on the location and season.

**Forecaster Note:** The Miller-Holzworth can be employed to calculate mixing height, but is a very basic, and assumes stability is based only on solar insolation, and does not take into account any changes in airmass during the day. Subsidence inversions, precipitation (non dry adiabatic parcel ascent), and upward vertical motion will usually result in different values. To estimate morning mixing heights, add 5 degrees C to the minimum surface

temperature. Then follow the dry adiabat to the intersection of the 12Z sounding. The height above the ground is the predicted morning height. Afternoon mixing heights can be forecast in much the same manner. The predicted maximum temperature is followed up the dry adiabat to the intersection of the 12Z sounding. This level is the forecast of the afternoon mixing height.

#### TRANSPORT WIND

Transport wind is defined as the average wind speed in all directions of all winds within the layer bounded by the surface and the mixing height. Transport winds provide land managers with information about the horizontal dispersion (location and distance downwind from the source) or suspended particles from prescribed fires.

#### VENTILATION INDEX

Smoke dispersal improves as the mixed layer and transport wind increase. A derived value used to indicate smoke dispersal is the ventilation index, which may also be called the clearing index:

$$\text{Ventilation Index} = \{\text{mixing height (ft agl)} * \text{transport winds (mph)}\} / 100$$

Value		Rating
Less than 130	=	Poor (P)
130 – 299	=	Fair (F)
300 – 599	=	Good (G)
600 +	=	Excellent (E)

#### THE FOLLOWING IS POINT FORECAST INFORMATION VALID AT 1 PM EST.

The Point Forecast includes TEMP (temperature), RH (relative humidity), WSPD (wind speed), WDIR (wind direction), and QPF (quantitative precipitation forecasts). These forecasts are valid for each RAWS site at 1 pm EST (2 pm EDT).



## 2. Conference Calls

NWS Marquette and the Michigan Interagency Wildland Fire Protection Association (MIWFPA) will hold a conference call every Friday at 10 am Eastern as needed during the fire season. The day and time is flexible, and may be changed as needed. The conference call will be used to coordinate current weather, status of fuels, and the potential need for any Fire Weather Watches over the upcoming week. Calls will likely take place through spring green up and during any prolonged dry periods through the fire weather season. Depending upon the current fire weather conditions, additional calls may be needed during the week. The NWS will typically start off the call, followed by a discussion by MIWFPA agencies about available fuels, fire behavior, and resources.

NWS MQT conference call number

866 (participant code#)  
(leader pin#)

### Forecaster Note:

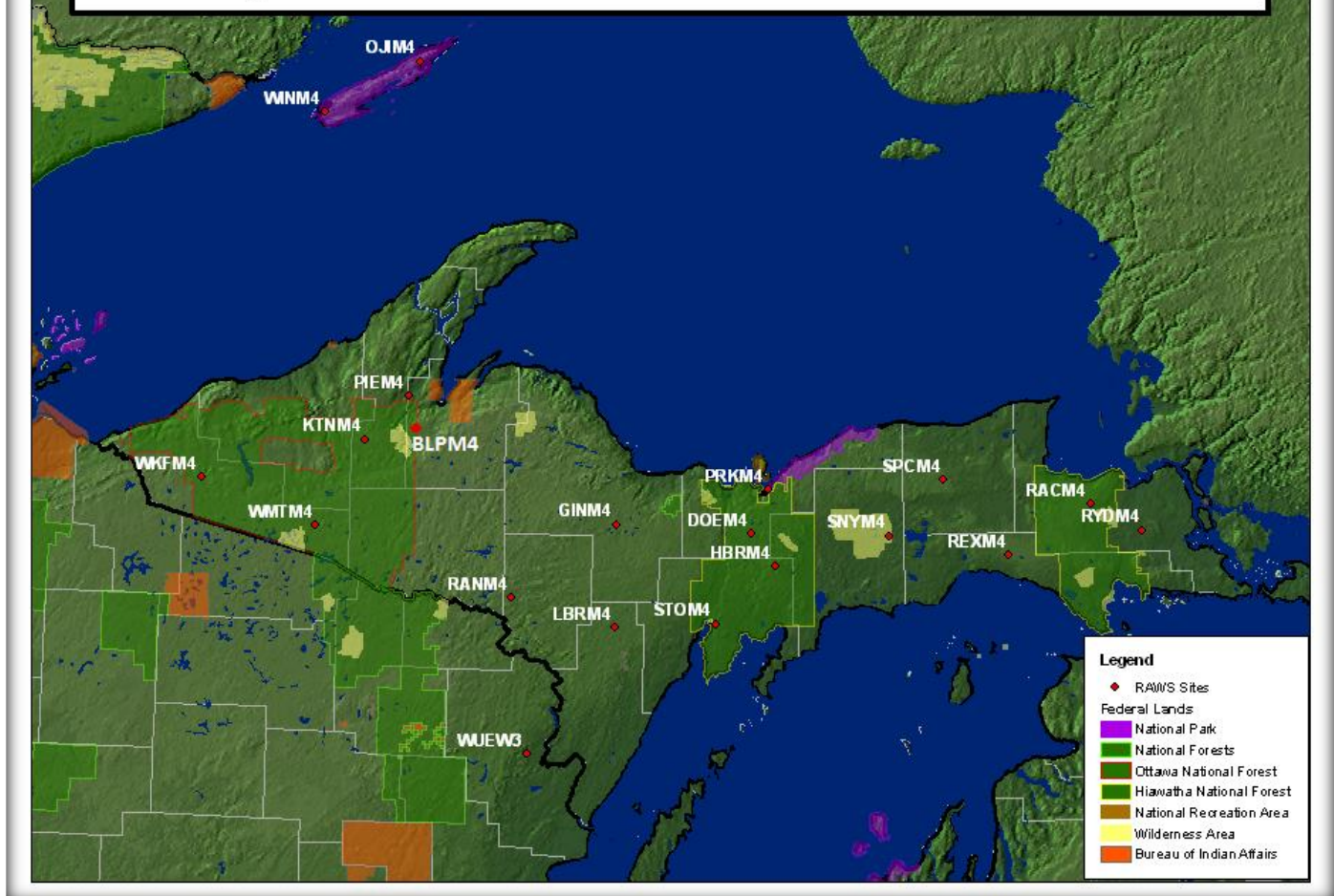
The forecaster working the short term desk (I shift) will typically participate in the call. Do not give the phone number/code to anybody other than MIWFPA share holders or the EACC Meteorologist. Join.Me may be used, with webinar instructions are found off the local Intranet.

### 3. Fire Weather Matrix (ARBFWMMQT) for National Fire Danger Rating System

The Fire Weather Matrix is a part of the The National Fire Danger Rating System (NFDRS). NFDRS evaluates complex model and fuel parameters as a quantitative means for evaluating the fire danger across a vast area such as a forest. The input values include daily weather observations, fuel moisture, and our Fire Weather Matrix. Fire managers receive numeric output that suggests the severity of fire danger over a large area.

Station Name (NFDRS Zone)	Station ID#	County	Controlling Agency	Elevation (ft)
Windigo/WINM4 (951)	200403	Keweenaw	NPS	830
Ojibway/OJIM4 (951)	200405	Keweenaw	NPS	1040
Wakefield/WKFM4 (952)	200102	Gogebic	MDNRE	1200
Watersmeet/WMTM4 (951)	200103	Gogebic	USFS	1605
Kenton/KNTM4	200301	Houghton	USFS	1262
Pelkie/PIEM4 (None)	200503	Baraga	MDNRE	1000
Baraga Plains/BLPM4	200504	Baraga	USFS	1269
Randville/RANM4 (951)	200802	Dickinson	MDNRE	1255
Gwinn/GINM4 (950)	200703	Marquette	MDNRE	1225
Labranche/LBRM4 (None)	200903	Menominee	MDNRE	1000
Doe Lake/DOEM4 (950)	201002	Alger	USFS	815
Munising/PRKM4	201004	Alger	NPS	771
Stonington/STOM4 (949)	201102	Delta	USFS	653
High Bridge/HBRM4 (949)	201103	Delta	USFS	759
Seney/SNYM4 (950)	201202	Schoolcraft	USFWS	702
Spincich Lake/SPCM4 (951)	201302	Luce	MDNRE	896
Rexton/REXM4 (None)	201401	Mackinac	MDNRE	862
Raco/RACM4 (948)	201504	Chippewa	USFS	900
Rudyard/RYDM4 (None)	201505	Chippewa	MDNRE	700

# Marquette WFO Fire Weather Sites



## a) *Issuance (seasonal, daily)*

The FWM, or Fire Weather Matrix point forecast product, is produced on a seasonal basis, similar to the Fire Weather Planning Forecast. This coded forecast is produced for all 18 NFDERS RAWS sites in the forecast area (plus Mott Island, 200401) on a routine basis. Additional sites may be added upon request to the fire weather focal point.

In 2011, the Fire Agencies implemented a combined automated and manual observation issuance system, using what is known as the Nelson model. This results in a new observation type, “N or R” and indicates that the Nelson model was used in determining 1-hour and 10-hour fuel moisture. Though several Nelson model observations are generated, only the final “N or R” type observation is stored for the 1300 LST observation. Several N-model calculations are performed to generate automated State of Weather (SOW) and Wet Flag. A user can at this point manually edit the SOW and Wet Flag values based on local knowledge. In this case, the observation is recalculated, and the type of observation becomes “O” to indicate user editing. The manual editing of SOW and Wet Flag is the key difference, along with automatic availability of the “N or R” observation type.

**Forecaster Note:** The FWM is created in the GFE Formatter Launcher, "FWM," after the necessary grids have been published/finalized. Check the latest observations, and make necessary changes to max/min temperature, relative humidity, and in extreme occasions the Wet Flag values. Add hours of precipitation by hand if needed. Click Transmit to send the point forecasts after editing the forecast values.

**b) Content**

FNUS83 KMQT 261945  
FWMMQT

**FCST, 200103, 030127, 13, 2, 17, 92, 1, 1, NW, 10, M, 18, 10, 98, 56, 1, 0, N**  
**FCST, Station, Date, 13, wx, T, RH, L1, L2, WD, WS, M, TM, TN, HM, HN, P1, P2, N**

**Decoding the FWM (Fire Weather Matrix)**

NOTE: All times are given in Eastern Standard/Daylight time. Adjust as needed for Central Time zone.

**Station** – NFDRS station number (starts with 20, indicating Michigan)

**Date** – ddhhmm (day, hour, minute)

**13** – indicates that the forecast is valid at 1300 LST (18Z), this is a constant

**Wx** – state of weather given as a value of 0 through 9, at 18Z (1 pm EST / 2 pm EDT) tomorrow.

<b>0</b> = Clear sky
<b>1</b> = Scattered clouds
<b>2</b> = Broken clouds
<b>3</b> = Cloudy
<b>4</b> = Fog
<b>5</b> = Drizzle
<b>6</b> = Rain
<b>7</b> = Snow/sleet
<b>8</b> = Showers
<b>9</b> = Thunderstorms

**T** – temperature at 18Z (1 pm EST / 2 pm EDT) tomorrow (°F)

**RH** – relative humidity at 18Z (1 pm EST / 2 pm EDT) tomorrow (%)

**L1** – lightning activity level from 19Z today to 04Z tonight; 2 pm EST (3 pm EDT) to 11 pm EST (midnight EDT)

**L2** – lightning activity level for 24 hours, from 04Z tonight until 04Z tomorrow night; 11 pm EST (midnight EDT) to 11 pm EST (midnight EDT)

**Lightning Activity Level Guide (Coverage)**

<b>1</b> = No T-storms
<b>2</b> = Isolated T-storms (1-14% coverage)
<b>3</b> = Widely Scattered T-Storms (15-24% coverage)
<b>4</b> = Scattered T-storms (25-54% coverage)
<b>5</b> = Numerous (55+% coverage)
<b>6</b> = Dry Lightning, when >=15% coverage and little or no rain

**WD** – wind direction at 18Z (1 pm EST / 2 pm EDT) tomorrow, using a 16-point compass (N, NNE, NE...)

**WS** – wind speed at 18Z (1 pm EST / 2 pm EDT) tomorrow (mph)

**M** – Missing, constant M given in place of forecast fuel moisture

**TM** – maximum temperature from 18Z (1 pm EST / 2 pm EDT) today until 18Z (1 pm EST / 2 pm EDT) tomorrow (°F)

**TN** – minimum temperature from 18Z (1 pm EST / 2 pm EDT) today to 18Z (1 pm EST / 2 pm EDT) tomorrow (°F)

**HM** – maximum humidity from 18Z (1 pm EST / 2 pm EDT) today to 18Z (1 pm EST / 2 pm EDT) tomorrow (%)

**HN** – minimum humidity from 18Z (1 pm EST / 2 pm EDT) today to 18Z (1 pm EST / 2 pm EDT) tomorrow (%)

**P1** – hours of precipitation from 18Z (1 pm EST / 2 pm EDT) today until 10Z (500 am EST / 6 am EDT) tomorrow

**P2** – hours of precipitation from 10Z (5 am EST / 6 am EDT) tomorrow until 18Z (1 pm EST / 2 pm EDT) tomorrow

**WF** – wet flag is used to indicate if fuels will be wet at 18Z tomorrow (1 pm EST / 2 pm EDT), and is given as Y or N. If Y is used, then all indices will be forced to zero. N is most common. A 75% or greater probability of precipitation at 18Z tomorrow (1 pm EST / 2 pm EDT) will result in a Y.

**c) WIMS ID contact**

All fire weather stations have been assigned numbers to be used as the identification number when entering into the Weather Information Management System (WIMS). If a new station is established, or a present station is moved, a new identification number should be requested from the Eastern Area GACC Meteorologist, in coordination with WIMS and the National Weather Service.

#### 4. Site-specific wildland fire forecasts (Spot)

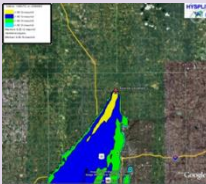

Spot Forecasts are issued when requested by Interagency Wildland Fire Agencies for wildland fires or planned burn operations and are available 24 hours a day. They differ from our routine fire weather forecasts by incorporating greater detail in timing, higher resolution of terrain influences, as well as meso-scale and sometimes micro-scale weather influences impacting the site.

A Spot Forecast may also be requested for non-fire incidents or events. Examples would include search and rescue, HAZMAT, or other situation where the information would be critical to public safety. The request must be made by a government or contract government official (federal, state, tribal, or local).

A HYSPLIT trajectory run can be created for smoke by adding the words HYSPLIT and then an email address for the run to be sent to.

Example: Hysplit [email.address@user.gov](mailto:email.address@user.gov)

Dispersion runs can be generated by calling the NWS MQT office. While this may be more helpful for shorter-term burns, they can still only be generated for fires (Rx or wildfires) of 100 acres or more. Contact the fire weather focal point for more information.

	Dispersion Model	Trajectory Model (Experimental)
Description	Forecasts the evolution of a smoke/chemical plume over time and space 	Forecasts where a parcel would travel from a given point starting at a specific elevation 
Needed Information	Additional Information required (burn size, duration, email)	All gathered from spot request
Request Method	Phone	Spot Forecast Request
Produced by	NWS forecaster	Automated
Delivery Method	Email	Email
Return Time	Up to ½ hour	Few Minutes

##### a) Criteria

Before we issue a forecast for a particular site, we need detailed information about the site, who is making the request, and why. Some of these site details include elevation, latitude, longitude, and aspect. The more information we receive about a burn site, the more accurate our forecasts tend to be. Current weather information is of great benefit if available, including temperature, wind speed, and relative humidity. We will also need to know the requesting agency, project name, phone

number, and effective time for the requested forecast. The turnaround time between the request and forecast issuance is typically between 30 and 40 minutes.

**Forecaster Note:** If the online NWSpot program is down, complete requests using Form D-1 (located on the NWS MQT Fire webpage). If a spot forecast is completed using the D-1 form, make a note in the shift log and place a hard copy in mailbox of the fire weather focal point.

To compose a Spot Forecast, create/update any appropriate grids. Use the Formatter Launcher in GFE, and select FWS from the *Products* menu. After clicking the *Run Formatter* button, select the spot request. Fill in the appropriate boxes pertaining to the request, and click *OK*. Edit the spot forecast as needed, paying special attention local weather features and how they relate to any available observations. Large ranges are of little help to the user, so try to be as specific as possible. Be sure to address specific questions that came in with the request, either in the synopsis or elsewhere. Do not use the term “Red Flag” within the Spot Forecast or any other text products unless a Red Flag Warning is in effect!

Once completed, the Spot Forecast will be relayed back to the requesting agency via the NWSPOT program.

#### ***b) Content***

A Spot Forecast traditionally contains sky conditions, weather, temperature, relative humidity, and wind speed.

Optional Spot Forecast elements include...

- Sky/Weather
- Temperature
- Relative Humidity
- General Wind (**Note: This will be the same wind as discussed in the Fire Weather Planning Forecast (Airport Winds). General Wind is utilized, as the term Airport Wind is not an option in the NWS Spot template. Winds may be diminished or otherwise edited by the forecaster based on input of sheltering and other topographic information.**)
- Haines Index
- Smoke Dispersion (Transport Winds and Ventilation Index)
- Lightning Activity Level
- Mixing Height
- Wind Wave
- Rainfall Amount
- Additional information upon request

## PRIMARY FORECAST ELEMENTS

TDA TNT TMR (Today, Tonight, Tomorrow)

- Sky / Weather
- Temperature
- Relative Humidity
- General Wind
- Haines Index
- Smoke Dispersion
- Lightning Activity Level
- Mixing Height
- Wind Wave
- Rainfall Amount

All parameters, excluding Dispersion and Wind Wave, are discussed in length in the Fire Weather Planning Forecast section of this Annual Operating Plan.

### DISPERSION

Clicking on the option for dispersion will result in the following 2 parameters, Transport Winds and Ventilation Index. The Ventilation Index was discussed in the Fire Weather Planning Forecast section. The Transport Wind is the average wind speed and direction in the mixed layer.

### WIND WAVE

Wind Wave is the wave height in feet (ft). This parameter is, in our case, available over most of Lake Superior and northern Lake Michigan. It is especially important for search-and-rescue, spills, incidents, or near water fire operations.

```
IF CONDITIONS BECOME UNREPRESENTATIVE,  
CONTACT THE NATIONAL WEATHER SERVICE.  
SPOT FORECAST FOR TEST LOCATION...MI DNR  
NATIONAL WEATHER SERVICE MARQUETTE MI  
1019 AM EDT TUE APR 12 2011  
  
FORECAST IS BASED ON IGNITION TIME OF 1100 EDT ON APRIL 12.  
IF CONDITIONS BECOME UNREPRESENTATIVE...CONTACT THE NATIONAL WEATHER  
SERVICE.  
  
.DISCUSSION...LOW PRESSURE OVER SOUTHEAST CANADA WILL MAINTAIN A  
COOL NORTHWEST FLOW THROUGH WEDNESDAY. EXPECT NORTHWEST WINDS  
GENERALLY IN THE 10 TO 15 MPH RANGE TODAY WITH GUSTS OCCASIONALLY  
INTO THE 20 TO 25 MPH RANGE. LOOK FOR INCREASING CLOUD COVER THROUGH  
THE DAY. A LOW PRESSURE TROUGH MOVING THROUGH THE AREA TONIGHT MAY  
BRING A FEW SPRINKLES. ANOTHER TROUGH ON WEDNESDAY WILL BRING A  
CHANCE OF A FEW LIGHT SHOWERS. HIGH PRESSURE WILL THEN BUILD INTO THE  
REGION THROUGH THE END OF THE WEEK...BRINGING A WARMING TREND WITH  
NO PRECIPITATION.  
  
.TODAY...  
  
SKY/WEATHER.....MOSTLY SUNNY THEN BECOMING MOSTLY CLOUDY.  
MAX TEMPERATURE.....53 AT IGNITION...MAX 58.  
MIN HUMIDITY.....42 PERCENT AT IGNITION...MIN 37 PERCENT.  
GENERAL WIND.....WINDS NORTHWEST AT 11 MPH AT IGNITION...  
OTHERWISE NORTH WINDS 7 TO 12 MPH INCREASING
```



TO NORTHWEST 10 TO 15 MPH.  
HAINES INDEX.....4...OR LOW POTENTIAL FOR LARGE PLUME DOMINATED  
FIRE GROWTH.  
TRANSPORT WINDS.....NORTHWEST 16 TO 35 MPH INCREASING TO 24 TO 40  
MPH LATE.  
VENTILATION INDEX...GOOD (350) INCREASING TO EXCELLENT (2099) .  
LAL.....1.  
MIXING HEIGHT.....300-1800 FT AGL INCREASING TO 7500-8000 FT AGL.  
RAINFALL AMOUNT.....0.00 INCHES.

TIME (EDT)	11 AM	1 PM	3 PM	5 PM	7 PM
SKY (%)	36	64	75	81	80
WEATHER COV.....					
WEATHER TYPE.....	NONE	NONE	NONE	NONE	NONE
TEMP.....	53	56	57	56	53
RH.....	42	38	37	37	40
GENERAL WIND.....	NW 11	NW 11	NW 12	NW 12	NW 11
GENERAL WIND GUST20	20	20	25	25	20
HAINES INDEX.....	4	4	4	4	4

**c) Procedures**

The preferred method for requesting and issuing a spot forecast is from our website:

<http://spot.nws.noaa.gov/cgi-bin/spot/spotmon?site=mqt>

\*\*new page coming 2016 season <http://preview.weather.gov/spot/>

If necessary, you may fax a Spot Request Form D-1 to our office or phone in the specific request. If you use this method, a call would be greatly appreciated to alert us of the arriving fax. This will expedite the process. Copies of the Spot Request Form D-1 can be downloaded from the following site, or made available upon request:

[http://www.weather.gov/directives/010/401f/WS\\_FORM\\_D\\_SPOT.pdf](http://www.weather.gov/directives/010/401f/WS_FORM_D_SPOT.pdf)

Once sent, the forecasters will be alerted, as the product ARBSTQMQT alarms at the weather service office. A phone call to the forecast office is usually not needed, but may help clear up questions the forecasters may have about the request.

Once the forecast has been issued, the Spot website will auto-update/refresh. At the forecast office, the final forecast will also alert on the workstations, as the product ARBFWSMQT.

Feel free to test out our online request page. If you do send in a test request, please contact our office to tell one of the forecasters that you are doing so. If you have any questions about Spot requests feel free to give us a call. Feedback is greatly appreciated via the NWS Spot interface.

## 5. Wildfire Potential Statement (ARBRFDMQT)

### a) Criteria

A Wildfire Potential Statement (ARBRFDMQT) can be used as an outlook to potential critical fire weather conditions beyond when a Fire Weather Watch is traditionally issued. It can also be utilized for those times when conditions do not quite meet specific Fire Weather Watch or Red Flag Warning criteria, but elevated fire danger remains due to forecast or ongoing weather conditions. The main concern is in the summer when we can have large wildfires in some of our more volatile fuels. In some cases we can have crown fires with significant fire spread in some of the Jack Pine forests when Relative Humidity values are closer to 35% (well above the 25% Red Flag Warning criteria value). This typically occurs when Temperatures are above normal and Winds are gusting over 25 mph.

The product briefly describes the fire danger, the weather conditions behind it, how long the conditions will last, and concludes with a brief call to action. A Special Weather Statement (SPS) may also be utilized for larger events, as it will automatically highlight on our website, and may be a higher alert product for local and national media sources. However, it is of note that the SPS will likely be overwritten when we have other near-critical weather. A couple of examples include near-severe thunderstorms and patchy dense fog

Beginning with the 2014 season, the criteria for this product have been changed:

- Wind Gusts must be forecast to be over 25 mph
- While Wind Gusts will be the most critical parameter to key off of for this product, we should otherwise be near Red Flag Warning criteria. Temperatures should generally be running above normal, with Relative Humidity values less than 40%.

### Forecaster Note:

Due to the change in criteria, it will be important to coordinate the issuance of this product with our typical contacts. When a Wildfire Potential Statement has been issued, there is no need to include a special headline in the routine FWF. There is no requirement to update the statement at a certain time, but during a prolonged period of high fire danger RFDs should be issued at least once a day. No cancellation statement is needed when conditions improve. The RFD is created in GFE, under "RFD." Select the zones you want, with separate segments if appropriate. *Unless instructed to do otherwise by fire officials, avoid trying to describe the level of fire danger. Instead, use terms like elevated fire risk or increased fire potential. Only the use of the phrase "Extreme Fire Danger" in the headline of this product will activate the WWA maps (color coding on NWS web sites).* Create/Edit the [Top News of the Day](#) story.

### b) Content

---

WILDFIRE POTENTIAL STATEMENT  
NATIONAL WEATHER SERVICE MARQUETTE MI  
500 AM EDT THU APR 14 2011

...VERY HIGH FIRE RISK TO CONTINUE THROUGH THE WEEKEND...

HIGH PRESSURE CENTERED OVER HUDSON BAY...ALONG WITH A WEEK WITHOUT RAINFALL...HAS RESULTED IN VERY DRY CONDITIONS AND AN INCREASED WILDFIRE POTENTIAL ACROSS UPPER MICHIGAN. EXPECT NO RAINFALL AND VERY LOW HUMIDITIES INTO THE WEEKEND...MAINTAINING THE VERY HIGH FIRE RISK.

BECAUSE OF THE VERY HIGH FIRE RISK...POSTPONE ANY OUTDOOR BURNING AT LEAST UNTIL NEXT WEEK. IF BURNING MUST BE DONE...CHECK WITH LOCAL GOVERNMENTAL AGENCIES FOR ANY BURNING RESTRICTIONS THAT MAY BE IN EFFECT.

\$\$

---

## 6. Fire Weather Watch, Red Flag Warning Program (ARBRFWMQT)

The Fire Weather Watches and Red Flag Warnings are issued to alert of combination of dry fuel and weather conditions that could result in extensive wildfire occurrence or extreme fire behavior. These conditions alert our land management agencies to the potential for widespread new ignitions or control problems with existing fires, both of which could pose a threat to life and property.

A **Fire Weather Watch** is issued 12 to 96 hours in advance of the onset of possible warning conditions.

A **Red Flag Warning** is issued within 24 hours of the event (or onset of warning conditions).

### a) Criteria

The parameters used to define a watch or warning includes relative humidity, wind speed, and temperature, and fuel moisture (defined as a period of dry weather). Specific fuel moisture must be coordinated with our users.

- A dry spell for over a week (shorter before spring green-up or after fall color)
- Sustained Wind Speed  $\geq 20$  mph (10 m ASOS-Airport winds)  
or  $\geq 15$  mph (20 ft RAWS winds)
- Relative Humidity 25% or less
- Temperature 70 F or greater

*Note: The temperature criterion is soft. Red Flag Warnings can be used for temperatures less than 70 degrees depending on other factors.*

Initial watch/warning coordination may be accomplished during the semi-routine weekly MIWFPA conference call. If a Fire Weather Watch is already in effect and expected weather conditions still meet Red Flag Warning criteria, no ok is needed from MIWFPA to issue the Red Flag Warning. Once a Red Flag Warning is issued the different agencies of MIWFPA should be notified as soon as possible. If no Fire Weather Watch is in effect, then contact must be made with MIWFPA before a Red Flag Warning is issued. Contacts for MIWFPA coordination are listed below...

- Michigan DNR – Duty Officer
- Hiawatha NF and Pictured Rocks NL – Hiawatha Fire Management Officer (UPCC)
- Seney NWR – Gary Lindsay
- Ottawa NF – Duty Officer
- US BIA – Will Wiggins

Once a decision is made to issue a Fire Weather Watch or Red Flag Warning, the Fire Weather Forecast should be updated accordingly. You must also notify the EACC Floor Coordinator.

*b) Content*

The following is an example of a Red Flag Warning; a fire weather watch would look very similar. The header will state whether it is a Fire Weather Watch or Red Flag Warning. This narrative product will be comprised of a headline followed by a brief statement with more detail as to where, when, and why the product has been issued.

---

```
RED FLAG WARNING
NATIONAL WEATHER SERVICE MARQUETTE MI
601 AM EDT WED SEP 22 2010

...RED FLAG WARNING IN EFFECT FROM 2 PM EDT /1 PM CDT/ THIS
AFTERNOON TO 9 PM EDT /8 PM CDT/ THIS EVENING FOR NORTHWEST UPPER MICHIGAN...

.HIGH PRESSURE WILL REMAIN ACROSS THE AREA TODAY. EXPECT AFTERNOON RELATIVE
HUMIDITY TO BOTTOM OUT AS LOW AS 20 PERCENT AWAY FROM THE MODERATING
INFLUENCE OF THE LAKE SUPERIOR AS HIGH TEMPERATURES REACH 65 TO 70. NORTHWEST
UPPER MICHIGAN MISSED OUT ON WIDESPREAD RAIN THAT FELL ON SUNDAY. SUSTAINED
WEST WINDS WILL BE 10 TO 15 MPH THIS AFTERNOON AS WELL.

ALTHOUGH THE WINDS ARE NOT LIKELY TO BE AS STRONG ON THURSDAY AFTERNOON AND
THE RELATIVE HUMIDITY WILL BE A BIT HIGHER...DAYTIME HIGH TEMPERATURES ARE
FORECAST TO PEAK FROM 70 TO 75 AWAY FROM THE GREAT LAKES. SO THE ELEVATED
FIRE RISK WILL PERSIST THROUGH THURSDAY BEFORE A CHANCE OF SHOWERS RETURNS
LATE THURSDAY NIGHT AND FRIDAY.

MIZ001>004-009-084-290100-
/O.NEW.KMQT.FW.W.0001.080528T1800Z-080529T0100Z/
KEWEENAW-ONTONAGON-NORTHERN HOUGHTON-BARAGA-GOGEbic-
SOUTHERN HOUGHTON-
601 AM EDT WED SEP 22 2010 /501 AM CDT WED SEP 22 2010/

...RED FLAG WARNING IN EFFECT FROM 2 PM EDT /1 PM CDT/ THIS AFTERNOON TO 9 PM
EDT /8 PM CDT/ THIS EVENING...

THE NATIONAL WEATHER SERVICE IN MARQUETTE HAS ISSUED A RED FLAG
WARNING...WHICH IS IN EFFECT FROM 2 PM EDT /1 PM CDT/ THIS AFTERNOON TO 9 PM
EDT /8 PM CDT/ THIS EVENING.

HIGH TEMPERATURES WILL WARM TO 65 TO 70 DEGREES TODAY AWAY FROM LAKE SUPERIOR
WITH RELATIVE HUMIDITY VALUES DROPPING TO AS LOW AS 17 TO 24 PERCENT THIS
AFTERNOON INTO THIS EVENING AWAY FROM LAKE SUPERIOR. WEST WINDS WILL BE 10 TO
15 MPH THIS AFTERNOON AND EARLY EVENING WITH CRITICAL FIRE WEATHER CONDITIONS
EXPECTED FROM 2 PM EDT TO 9 PM EDT TODAY. CONDITIONS WILL IMPROVE AFTER
SUNSET WITH TEMPERATURES FALLING...RELATIVE HUMIDITIES RISING AND WINDS DYING
DOWN.

A RED FLAG WARNING MEANS THAT CRITICAL FIRE WEATHER CONDITIONS ARE EITHER
OCCURRING NOW...OR WILL SHORTLY. A COMBINATION OF STRONG WINDS...LOW RELATIVE
HUMIDITY...AND WARM TEMPERATURES WILL CREATE EXPLOSIVE FIRE GROWTH POTENTIAL.

$$
```

---

## 7. Specific Online Products

There are many fire specific data and forecasts offered through our local and national NWS fire pages:

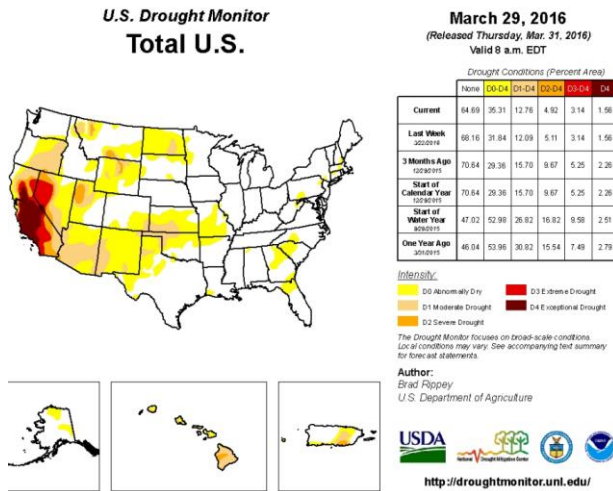
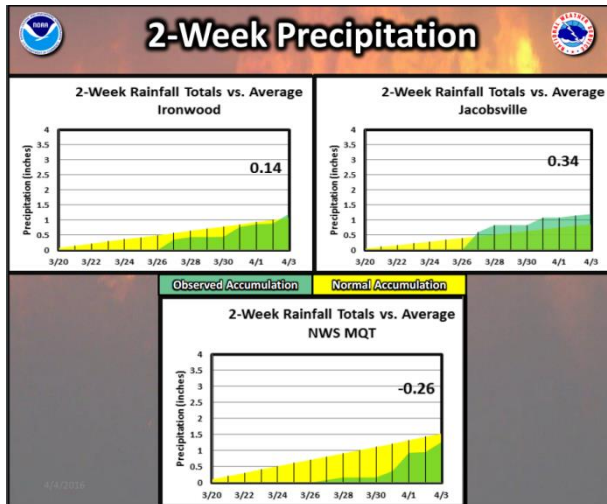
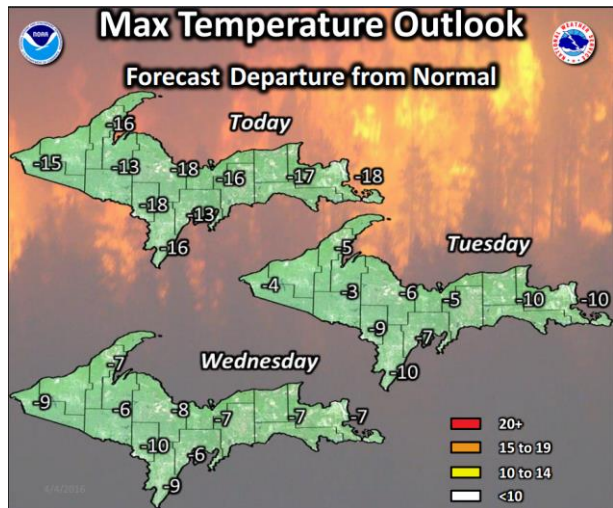
<http://weather.gov/mqt/fire>

<http://weather.gov/fire>

The following are just a few of the more useful products available.

### a) Daily Fire Weather Briefing

<http://www.weather.gov/media/mqt/FireWX.pdf> Graphical briefing generated daily before 7 am ET featuring temperature trends compared to normal for next 3 days (image below) in addition to forecasts of maximum temperature, highest wind gusts and lowest minimum humidity for today, tomorrow and the following day. Expected precipitation amounts for today and tomorrow and for the entire week are included in addition to general overview for the following week (days 8 to 14) in terms of temperature and precipitation departures. Surface weather maps for today and tomorrow are within the briefing as are various observations of precipitation over the previous two weeks (image below) and current drought indices (image below).



### b) Fire Weather Graphics

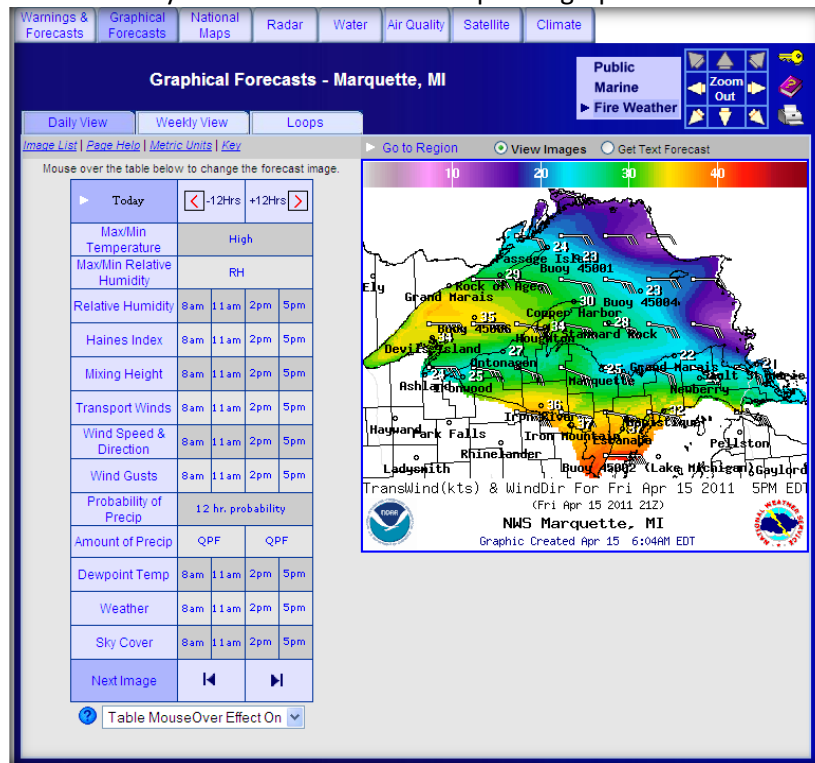
<http://www.weather.gov/forecasts/wfo/sectors/mqtFireDay.php#tabs>

(image below) Weather elements displayed in a map form in 3, 6, or 12 hour increments depending on the parameter. Data is available out through 6-7 days, with most Fire Weather elements going through the next 2 days. This product is updated several times a day, with the Fire Weather elements updated at least 2 times a day during the fire season (around 6 am and 5 pm).

A new zoomable higher quality interface is available at

<http://preview.weather.gov/graphical>

While this way of viewing our Graphical Forecasts will give you a cleaner looking image, there are only a select number of Fire specific graphics available.

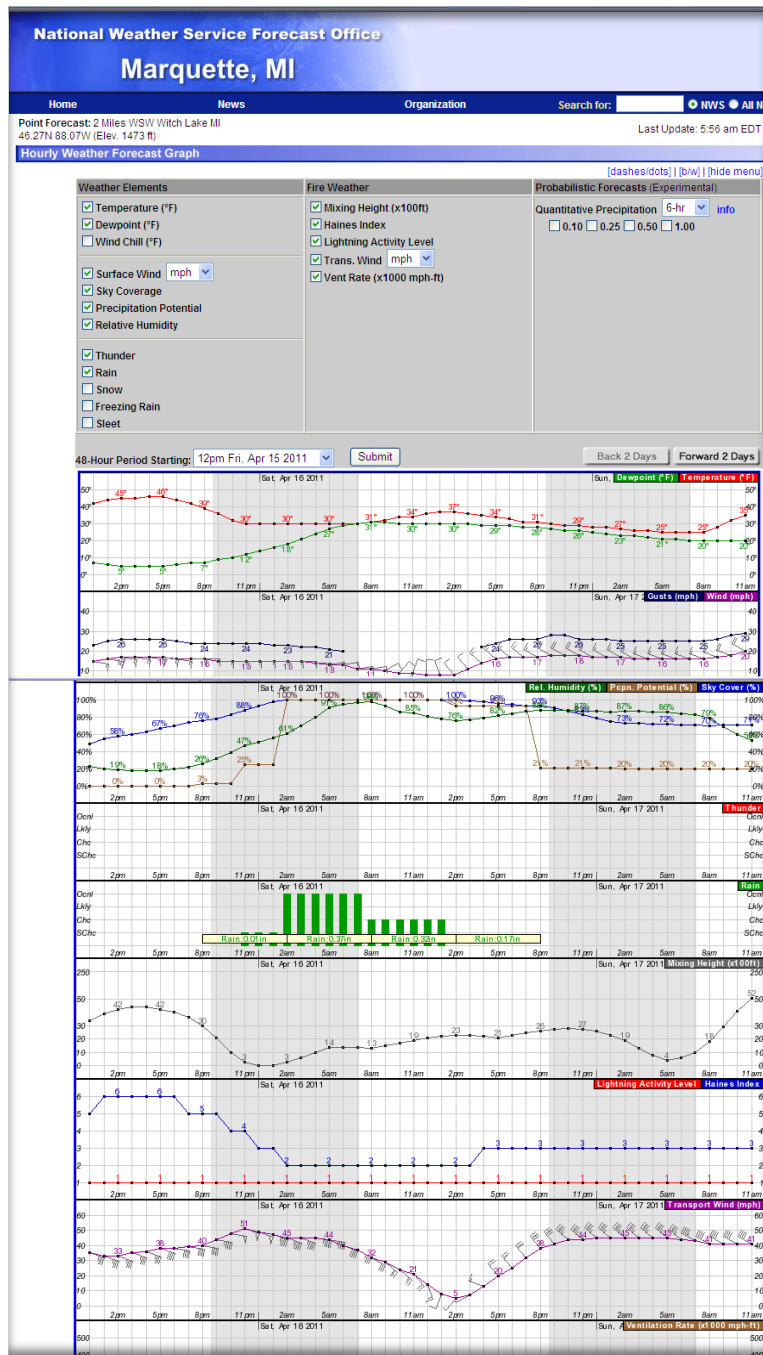


### c) Hourly Weather Graph

<http://www.weather.gov/mqt>

Point-based hourly weather output for most parameters through the next 6-7 days, with most Fire Weather elements going through the next 2 days. This product is updated several times a day, with the Fire Weather elements updated at least 2 times a day during the fire season (around 6 am and 5 pm).

- On the map, click on your desired location
- If needed, edit location via the map in middle of page
- Scroll down to the bottom-right side of the page
- Select **Hourly Weather Graph**
- Select your desired Weather/Fire Weather Elements, adjust the time period "48-Hour Period Starting", and hit **Submit**



d) **Weather Activity Planner**

<http://forecast.weather.gov/wxplanner.php?site=mg>

To assist in prescribed burn planning, the Weather Activity Planner will allow you to easily find windows where the prescription conditions will be available. **Caution:** several fire specific parameters will only be available for the first 2 days (example...Mixing Height, Transport Wind, Haines Index, Lightning Activity Level, Vent Rate).



# Marquette, MI

Home

News

Organization

Search for:

NWS All NOAA Go

## Weather Activity Planner

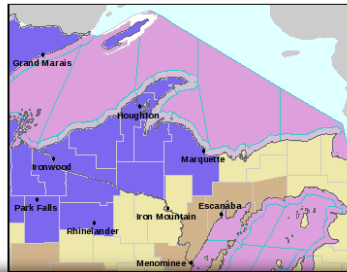
Welcome to the **Weather Activity Planner**. Please enter the range of weather parameters required for your activity. Then, either click the approximate location on the map below, or enter the specific latitude and longitude and hit submit. This will query the forecast grids to find when your weather requirements will be met at the nearest grid point over the next 7 days. Public **comments and suggestions** are encouraged.

This application generates products from a digital forecast data base. It is intended to allow a user to define and produce a forecast for general planning purposes only. As any weather or hydrologic event evolves, updated forecasts and warnings are issued by the NWS. Customers are urged to obtain the latest official forecast information prior to engaging in any weather sensitive activity, and to monitor forecasts for updates during such activities.

The **Weather Activity Planner** is NOT meant to replace a spot forecast request. **Weather Activity Planner** surface winds are a gridded representation of projected, local surface winds at a 5km or 2.5km resolution. The surface winds returned do NOT account for fuel type, sheltering or slope aspect. Users can select either surface wind speeds or 20 foot winds (if the 20 foot wind grid is available). If precise wind forecasts are needed, please submit a spot forecast request to your servicing Weather Forecast Office.

[\[English Units - Click to Change\]](#)

Element	Min	Max	Element	Min	Max
Temperature (°F)	<input type="text"/>	to <input type="text"/>	Surface Wind Direction	<input type="text"/>	to <input type="text"/>
Relative Humidity	<input type="text"/>	to <input type="text"/>	Sky Cover	<input type="text"/>	to <input type="text"/>
Surface Wind Speed (mph)	<input type="text"/>	to <input type="text"/>	Precipitation Potential	<input type="text"/>	to <input type="text"/>



Read watches, warnings & advisories

**Zoom Out**

- Gale Warning
- Winter Weather Advisory
- Small Craft Advisory
- Wind Advisory
- Gale Watch
- Special Weather Statement
- Hazardous Weather Outlook
- Hydrologic Outlook
- Short Term Forecast

Latitude/Longitude Entry  
 decimal degrees (i.e. 42.134) or  
 deg min sec (i.e. 42 23 34)

Latitude:

Longitude:

Use "-" (negative sign) in longitude for locations in Western Hemisphere

Weather Activity Planner for 46.19°N 87.62°W

[Interactive](#)

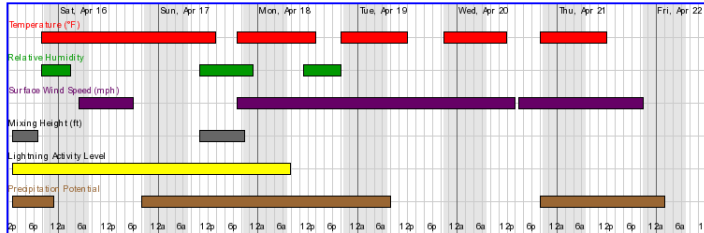
Point Forecast: 8 Miles N Northland MI

## Weather Activity Planner

This interactive forecast display is intended for general planning purposes. Data entered may have been changed for accuracy. Please verify the below data is appropriate. All wind direction information should be entered in a clockwise direction (using compass directions i.e. E, ESE, SE, etc). Public **comments and suggestions** are encouraged.

This application generates products from a digital forecast data base. It is intended to allow a user to define and produce a forecast for general planning purposes only. As any weather or hydrologic event evolves, updated forecasts and warnings are issued by the NWS. Customers are urged to obtain the latest official forecast information prior to engaging in any weather sensitive activity, and to monitor forecasts for updates during such activities.

The **Weather Activity Planner** is NOT meant to replace a spot forecast request. **Weather Activity Planner** surface winds are a gridded representation of projected, local surface winds at a 5km or 2.5km resolution. The surface winds returned do NOT account for fuel type, sheltering or slope aspect. Users can select either surface wind speeds or 20 foot winds (if the 20 foot wind grid is available). If precise wind forecasts are needed, please submit a spot forecast request to your servicing Weather Forecast Office.



Friday, April 22 at 11am

48-hr Element Meteorogram

Temperature: N/A Surface Wind: N/A  
 Relative Humidity: N/A Precipitation Potential: N/A  
 Mixing Height: N/A Lightning Activity Level: N/A

**Hazardous weather condition(s):**  
[Winter Weather Advisory](#)  
[Hazardous Weather Outlook](#)

Element	Min	Max	Element	Min	Max
Temperature (°F)	20	to 40	Mixing Height (ft)	4000	to 222222
Relative Humidity	25	to 60	Lightning Activity Level	1	to 2
Surface Wind Speed (mph)	0	to 12	Precipitation Potential	0	to 20

e) **Farsite Weather Input**

<http://weather.gov/fire> (zoom into and click on the area of interest, open WTR and WND files for FARSITE) or

<http://radar.srh.noaa.gov/fire/FARSITE/wtr.php?lat=46.468&lon=-89.6484>

<http://radar.srh.noaa.gov/fire/FARSITE/wnd.php?lat=46.468&lon=-89.6484>

Adjust the 2 links above for your specific latitude and longitude, remembering that forecast outputs are for 2.5 km grid boxes. Caution: If the location is in rough terrain or near a body of water, a small change in the latitude and longitude may result in a more representative forecast.

The screenshot displays the National Fire Weather Web Site interface. On the left is a blue navigation menu with options: Current Hazards, Fire Situation, Forecasts, Current Conditions, Outlooks, Drought/Precip, Fuels, Admin, GACCs, and Other Agencies. The main content area features a map of Marenisco, MI 49947. A pop-up window shows forecast data for Marenisco, MI 49947, including coordinates (Lat: 46.47°N, Lon: -89.65°W) and forecast zone (MIZ009). It offers options to 'Preserve Your View' via Permalink or Bookmark, and provides 'Point Forecast Information...' with tabs for Fire Weather, 7-Day, Hourly Graph, Digital/Tabular, and Tabular. Below this, there is 'Additional Info' with links for MQT Fire WX Page, WX Planner, Full Fire Wx Fcst, and FARSITE: WTR - WND. A note states: '\*Max's/Min's for 1st period of WTR are from the current time, on Request Spot Forecast - MesoWest Obs. (50 mile radius)'. On the right, there is an 'Enter Location' form with fields for Address, City, ZIP Code, County, and Lat/Lon. Below the form are links to 'Get info in KML format' for Current Warning Products, Active Fire Perimeters, Spot Forecast Requests, Day-1 Precip. Forecast, and Day-1 Outlook. At the bottom right, there is a 'View map by GACC Region...' section with a map of the United States divided into GACC regions.

## B. Special services, procedures for obtaining and billing

Special services could include teaching weather related courses or an on-site Incident Meteorologist (IMET).

When land management agencies wish for a fire weather forecaster to teach a course, the request should be made at least 3 weeks ahead of time. This can be done by calling or emailing the Fire Weather Program Manager(s). A one-day trip will not incur any costs to the requesting agency. However, with an overnight stay, travel expenses should be paid for by the requesting agency. In most cases reimbursement agreements are in place.

Please reference the Geographical Area Mobilization Guide and/or the National Mobilization Guide for details about IMET dispatches for wildland fire suppression operations.

**Michigan Interagency Wildland Fire Protection Association.** National Weather Service Fire Weather Program Manager(s) are members of this group, whose goal is to share information regarding wildland fire protection and prevention across the state of Michigan. The Michigan Interagency Wildland Fire Protection Association consists of representatives from the Michigan Department of Natural Resources, State Fire Marshal, Huron-Manistee, Hiawatha, and Ottawa National Forests, Seney National Wildlife Refuge, Pictured Rocks and Sleeping Bear Dunes National Lakeshore, U.S. Bureau of Indian Affairs, Michigan State Fire Chiefs Association, Michigan State Firemen's Association, U.P. Chiefs Association, and Michigan National Weather Service offices. Meetings are typically held in the fall and in the spring.

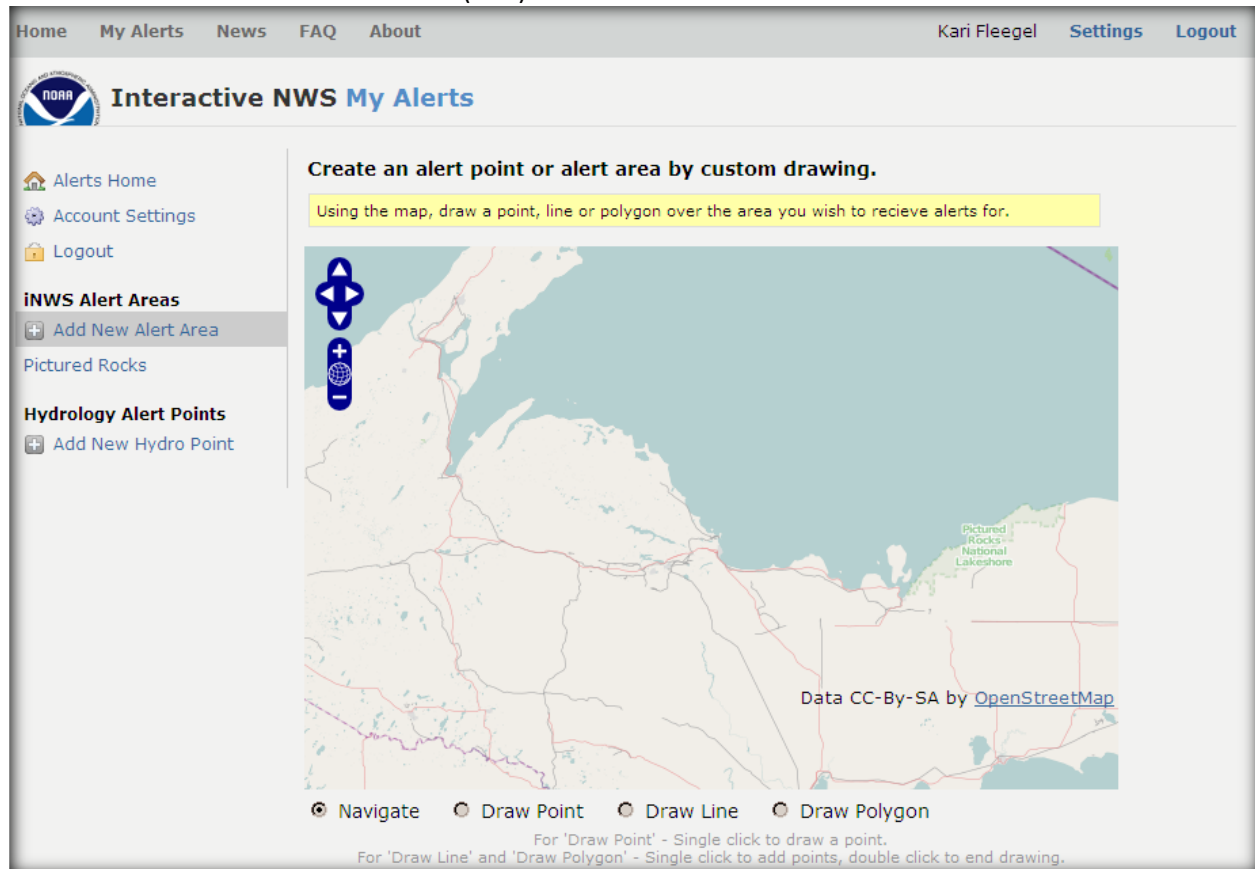
## C. Alert Communications

### 1. iNWS (Watch/Warning/Advisory Alerts)

<http://inws.ncep.noaa.gov>

The iNWS network is available for emergency personnel, which includes wildland firefighters and emergency planners. You are able to sign up for a location specific account that will provide you with email and/or text messages for selected Watch, Warning, and Advisory products issued by the National Weather Service. While many alerted products are available including Severe Thunderstorm and Tornado Warnings, the following products are for fire weather purposes...

- Red Flag Warnings/ Fire Weather Watches (RFW)
- Wildfire Potential Statements (RFD)

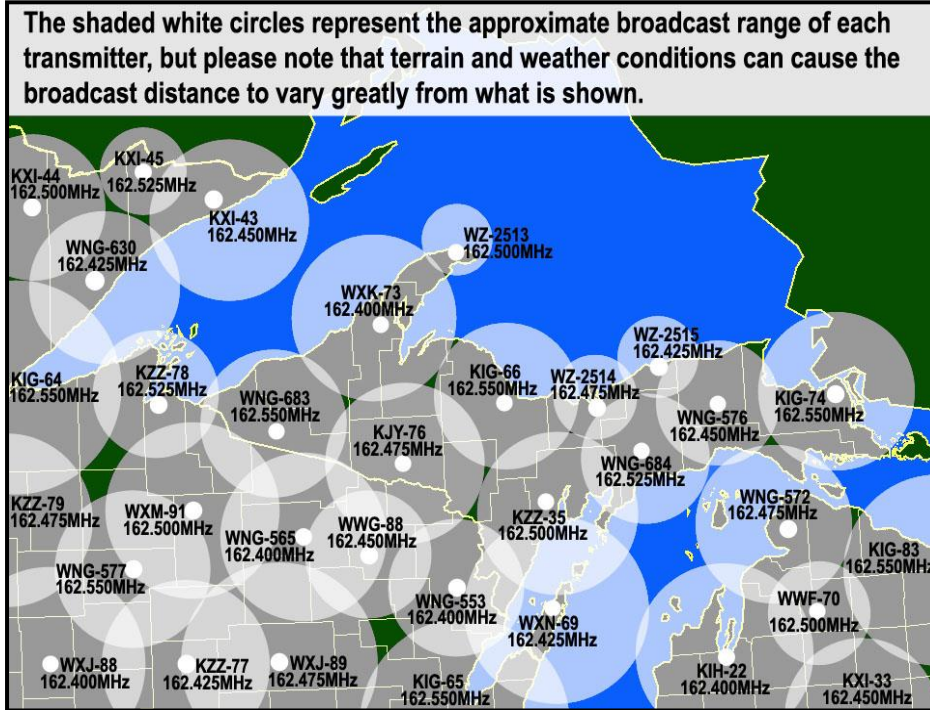


The screenshot displays the NOAA Interactive NWS My Alerts web application. The top navigation bar includes links for Home, My Alerts, News, FAQ, and About, along with user information for Kari Fleegel and links for Settings and Logout. The main heading is "Interactive NWS My Alerts" with the NOAA logo. A left sidebar contains navigation options: Alerts Home, Account Settings, Logout, iNWS Alert Areas (with sub-options for Add New Alert Area and Pictured Rocks), and Hydrology Alert Points (with sub-option for Add New Hydro Point). The main content area features a map titled "Create an alert point or alert area by custom drawing." with a yellow instruction box: "Using the map, draw a point, line or polygon over the area you wish to receive alerts for." The map shows a geographical area with a red line and a purple polygon drawn. A legend at the bottom indicates drawing tools: Navigate, Draw Point, Draw Line, and Draw Polygon. A note specifies: "For 'Draw Point' - Single click to draw a point. For 'Draw Line' and 'Draw Polygon' - Single click to add points, double click to end drawing." The map data is attributed to OpenStreetMap.

## 2. NOAA Weather Radio All Hazards

The products listed below will play on NOAA Weather Radio All Hazards at various intervals from every broadcast cycle, every 10 minutes, or more infrequent as needed. The periodicity of each product will vary depending on the severity of the fire situation and the presence of additional weather hazards (example- severe thunderstorms, flooding, etc.). However, they are typically broadcast every 10 minutes. Please contact the Fire Weather Focal Point(s) with any periodicity change requests.

- Wildfire Potential Statement (RFDMQT)
- Fire Weather Watch/Red Flag Warning (RFWMQT)



Call Sign	Site Name	Site Location (County)	Frequency	Power
KZZ78	Ashland	Ashland (Ashland)	162.525	1000
WZ2513	Copper Harbor	Copper Harbor (Keweenaw)	162.500	300
KJY76	Crystal Falls	Crystal Falls (Iron)	162.475	1000
KZZ35	Escanaba	Escanaba (Delta)	162.500	1000
WNG572	Emmet County	Emmet County (Cheboygan)	162.475	300
WZ2515	Grand Marais	Grand Marais (Alger)	162.425	100
WXK73	Houghton	Painesdale (Houghton)	162.400	1000
WNG84	Manistique	Steuben (Schoolcraft)	162.525	300
WNG683	Marinesco	Marinesco (Gogebic)	162.550	300
KIG66	Marquette	Negaunee (Marquette)	162.550	300
WZ2514	Munising	Munising (Alger)	162.475	100
WNG576	Newberry	Newberry (Luce)	162.450	300
KIG74	Sault St. Marie	Daftner (Chippewa)	162.550	1000
WXN69	Sister Bay	Sister Bay (Door)	162.425	1000
WNG553	Wausaukee	Wausaukee (Marinette)	162.400	1000

#### **IV. JOINT RESPONSIBILITIES**

Service boundaries and fire weather forecast zones, and text product specifics may be negotiated to meet customer and forecaster need.

## V. SIGNING PAGE AND EFFECTIVE DATES OF THIS AOP

This Agreement shall be effective until the issuance of the next Annual Operating Plan, expected out March of next year.

*National Weather Service, Marquette, MI, NOAA*

\_\_\_\_\_ *Date*

*Hiawatha National Forest, USFS*

\_\_\_\_\_ *Date*

*Ottawa National Forest, USFS*

\_\_\_\_\_ *Date*

*Michigan Department of Natural Resources*

\_\_\_\_\_ *Date*

*Seney National Wildlife Refuge, USFW*

\_\_\_\_\_ *Date*

*Isle Royale National Park, NPS*

\_\_\_\_\_ *Date*

*Pictured Rocks National Lakeshore, NPS*

\_\_\_\_\_ *Date*

*US Bureau of Indian Affairs (BIA)*

\_\_\_\_\_ *Date*