

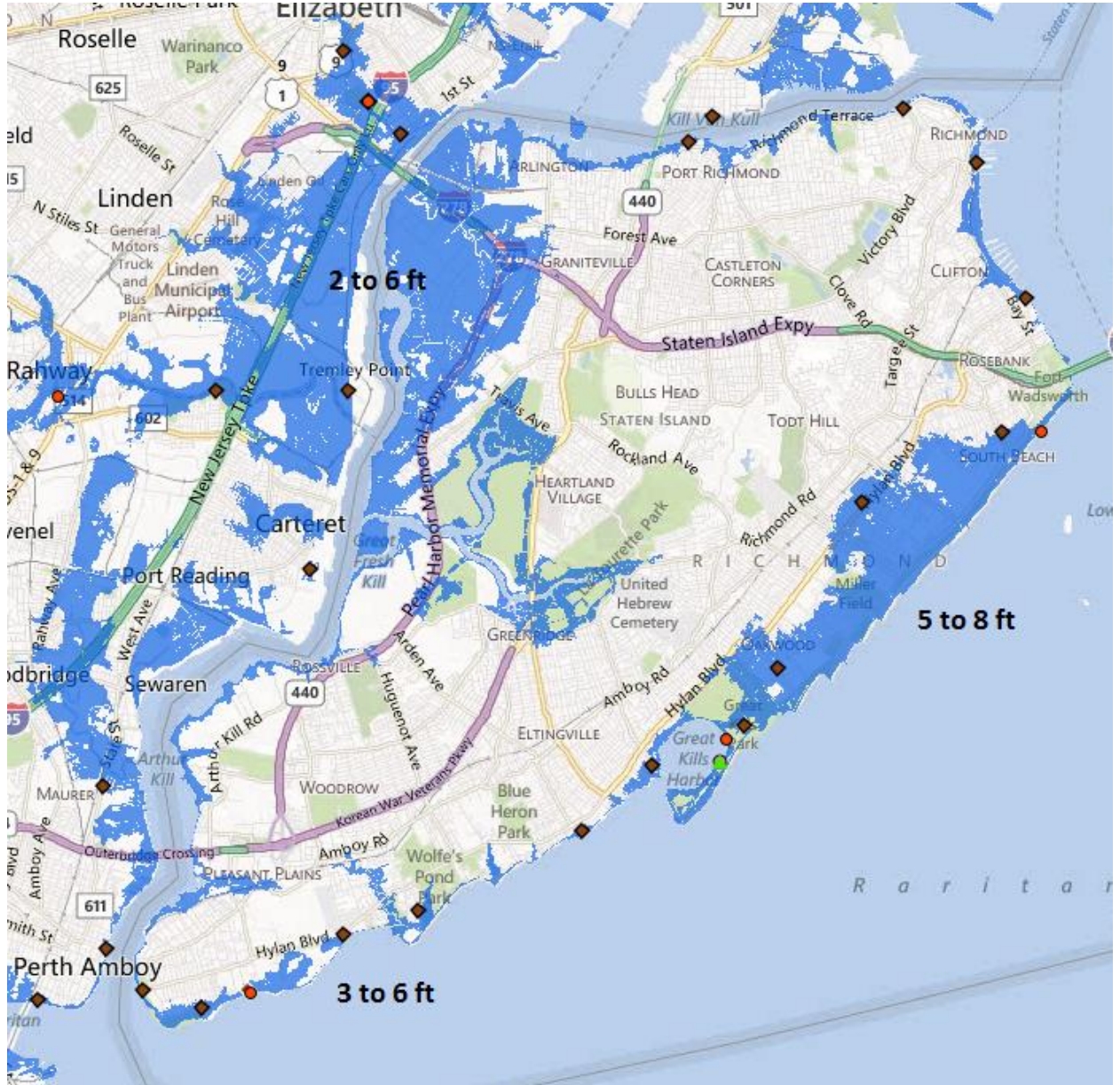
Bergen Point:

At around 14.6 ft MLLW / 9.1 ft MHHW 10/29/2012 8-10pm

[USGS/FEMA Sandy Storm Tide Mapper](#)

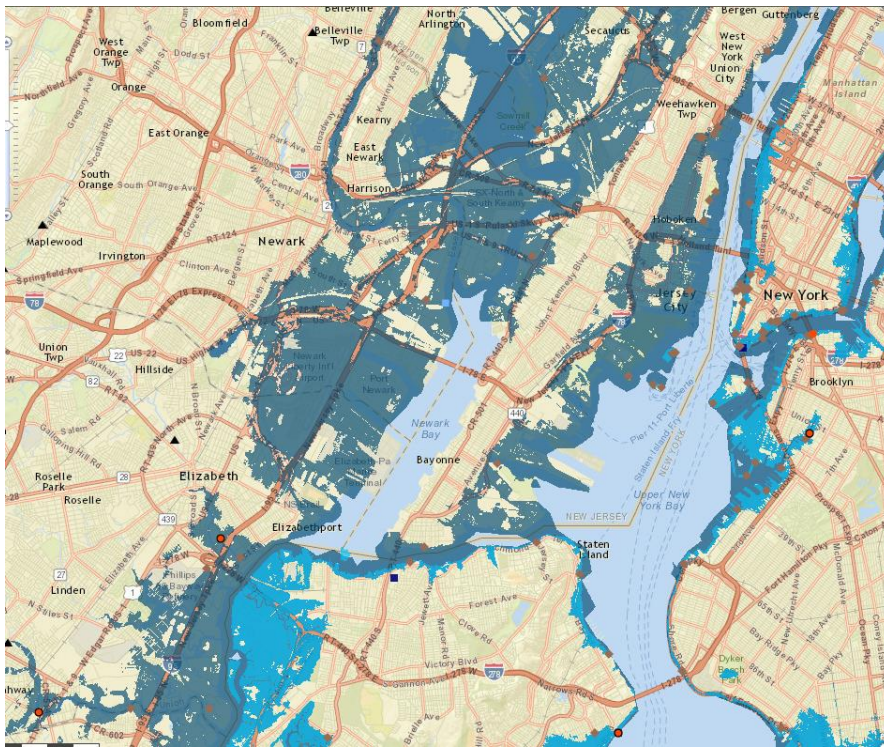
Staten Island

5 to 8 ft of inundation along the northeastern portion of Staten Island...extending all the way to Hylan Blvd. 3 to 6 ft of inundation along the se tip...and 2 to 6 ft along the Arthur Kill.



Northeastern New Jersey

Flooding up to Oradell Dam on Hackensack and Dundee Dam on Passaic

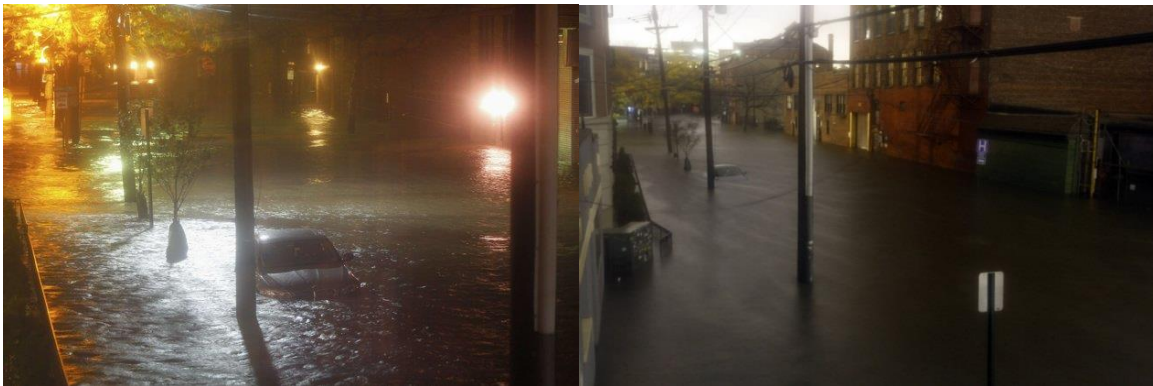


A couple of feet of inundation into the intersection of [Jefferson Ave and Hylan Ave](#).



Hoboken

3 to 7 ft of inundation along the Hoboken Waterfront. With inundation of all of Hoboken east of the NJ transit line.



Animation of flooding in Hoboken from Sandy

<http://www.nytimes.com/interactive/2016/02/08/nyregion/hoboken-flood-wall-maps.html>

Flood waters rush into the [Hoboken Path station](#) through an elevator shaft...around 6 ft of inundation at Hoboken terminal building.



Jersey City

3 to 5 ft of Inundation along the Jersey City Waterfront. With inundation of all of Jersey City east of the NJ Turnpike (I-78) and the NJ Transit line.

2 to 4 ft of inundation on [Montgomery St and Marin Blvd](#)



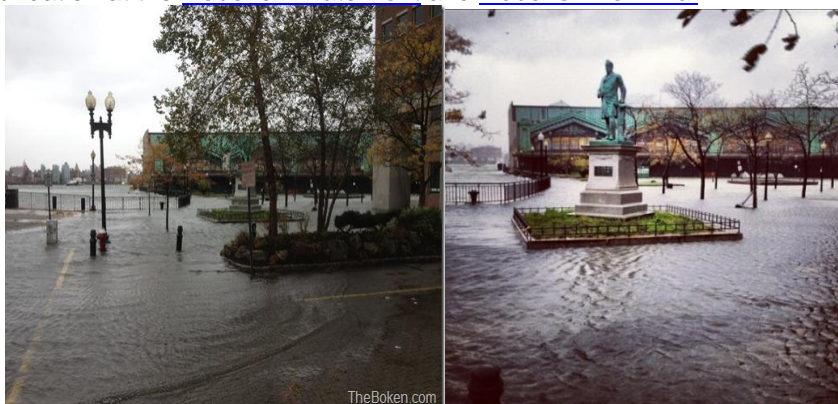
Moderate Flood threshold (ft above datum)

- MLLW / NGVD / MHHW / NAVD88
- 9.6' / 7.7' / 4.1' / 6.6'

At around 9.3 ft MLLW / 3.8 ft MHHW

Hoboken (10/29/2012 9-10am)

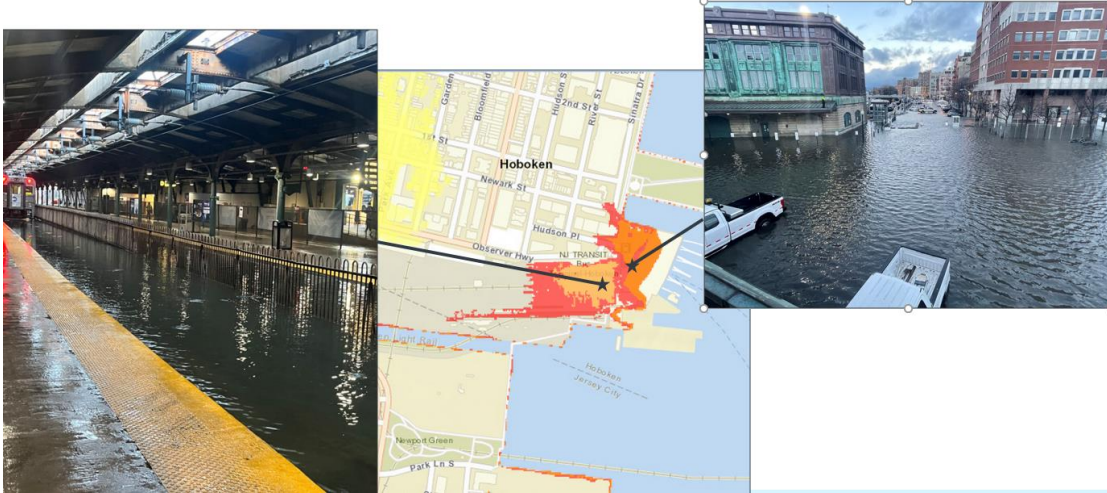
1 to 2 ft of inundation at the [Hoboken Waterfront](#) and [Hoboken Terminal](#)



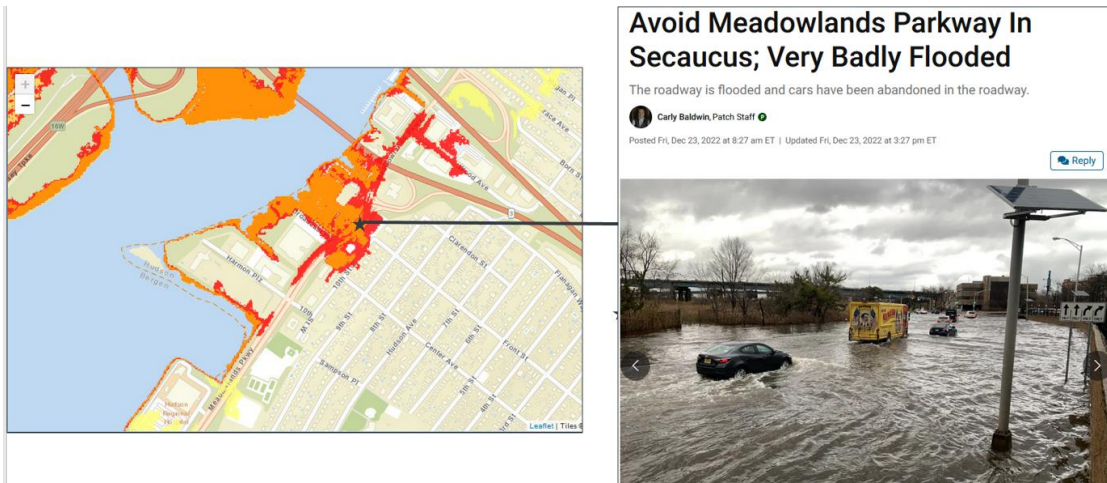
At 9.1 ft MLLW / 3.6 ft MHHW (12/23/2022)

SE Gales, switching to S gales right thru time of high tide. Forcing water up tidally affected rivers (Hudson and Hackensack R). 1 to 2 ft of inundation in low-lying areas and roadways.

Hoboken – 1 to 2 ft inundation in and around [Hoboken Terminal](#) along Hudson River



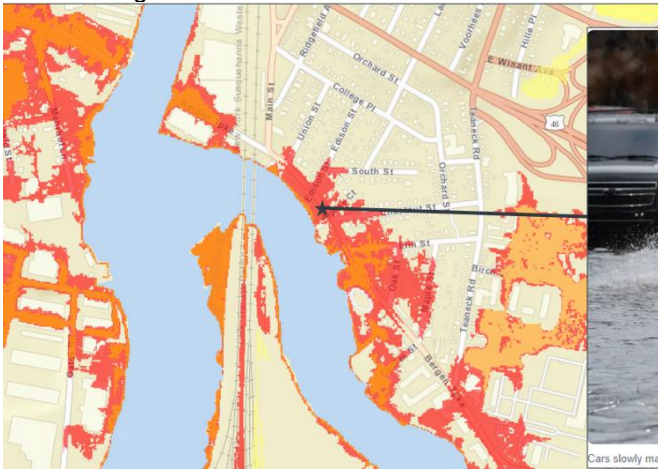
Secaucus – 1 to 2 ft inundation on [Meadowlands Parkway](#) along Hackensack River.



Hackensack – Water rescues on [South Newman Street](#) – Combo of 1.5 to 2” of rain and surge up Hackensack river. [River Street](#) flooded and closed.

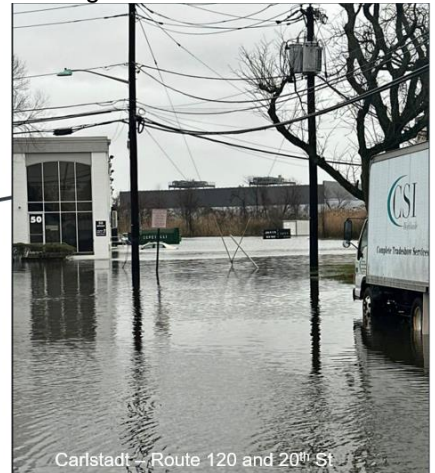
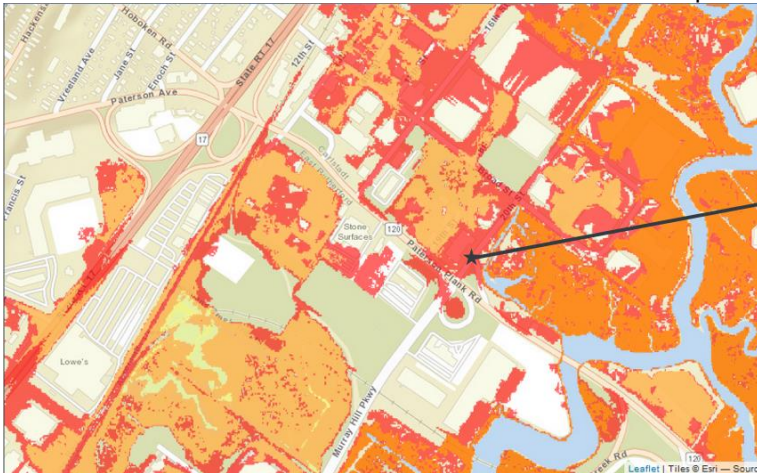


Ridgefield NJ – [Bergen Tpke](#) – 1 ft inundation from combo of 1.5 to 2” of rain and surge up Hackensack river. Flooding also took out a lane on Route 46 east in Ridgefield Park and on I-80 west in Ridgefield Park.



Cars slowly make their way through high water along Bergen Turnpike in Ridgefield Park, N.J. on Friday Dec. 23, 2022.

Carlstadt NJ - [Route 120 and Broad St](#) – 2+ ft inundation from combo of 1.5 to 2” of rain and surge up Hackensack river and then up Berry Creek Canal. The police department was working to evacuate businesses in the area. Cars were almost completely submerged under water.

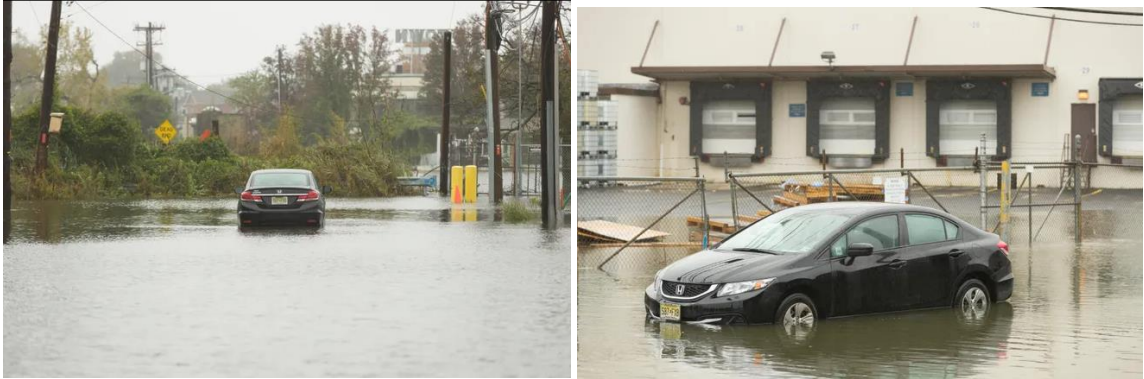


Carlstadt – Route 120 and 20th St

At 8.9 ft MLLW / 3.4 ft MHHW (10/27/2018)

½ to 1 “ of rain combined with elevated water levels.

Ridgefield Park, Bergen County – A car sits stranded in flood waters at the [Hackensack River End of Bergen Tpke in Ridgefield Park](#)
(Credit Steve Hockstein/Special to NorthJersey.com)



Bogota, Bergen County – [West Fort Lee Road](#) along Hackensack River closed due to flooding

Harrison - [Frank E. Rodgers Boulevard South](#) and [Riverbend Drive](#) near the Passaic River closed due to flooding.

At 8.5 ft MLLW / 3.0 ft MHHW

Kearney NJ

Inundation of [Bellville Turnpike \(Route 7\)](#) by the Hackensack River...closing road.

Moderate Flood threshold (ft above datum)

- MLLW / NGVD / MHHW / NAVD88
- 8.5' / 6.6' / 3.0' / 5.5'

At 8.4 ft MLLW / 2.9 ft MHHW

Hoboken – (2/8/2016)

Water beginning to splash over [Hoboken riverfront boardwalk](#)
Minor flooding of a few of the tracks at the [Hoboken Terminals](#) due to hydrostatic pressure.



Staten Island (2/8/2016)

Minor flooding on [Arthur Kill Road and Ridgewood Avenue](#)



Minor Flooding on [Travis Avenue and Victory Blvd.](#)



At 8.2 ft MLLW / 2.7 ft MHHW

Staten Island

East Shore- Inundation of [40 Hempstead Ave](#) a few blocks off New York Bay in the [Midland Beach section](#) (6/4/12 900-930pm)

Kearney NJ

Inundation of [Fishhouse Rd. in S. Kearney](#) by the Hackensack River...near the PSEG plant...closing road. (6/4/12 900-930pm)

At 8.0 ft MLLW / 2.5 ft MHHW

Harrison,NJ - Flooding on [Franklin Rodgers Blvd](#) by Redbull Arena. (1/23/2016)

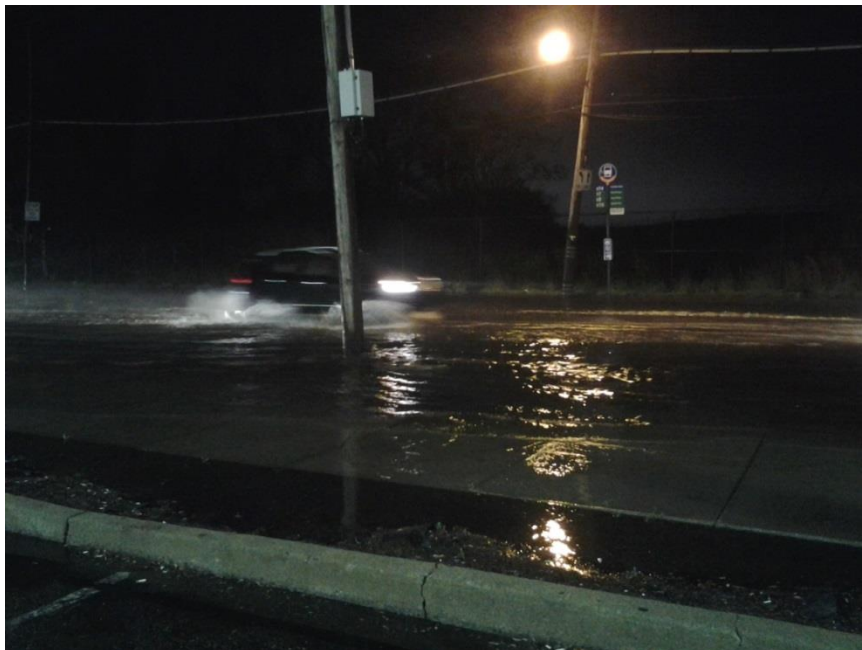
At 7.9 ft MLLW / 2.4 ft MHHW

Hoboken, NJ – Minor rain+surge flooding at [Hoboken](#). A rain event coinciding with high a storm tide causes flooding due to sewer outfalls being below storm tide level. Water levels tellingly dropped when tides were low again. (4/29/2014)

Kearney, NJ - [Fishhouse Road](#) – Flooded and impassable to traffic. Reports of cars struck in the water. This was due to the Hackensack River. (2/27/2013)

Staten Island, NY – Flooding of [Travis Avenue between Freedom and Victory Blvds](#) in the Fresh Kills area

1 ft of inundation on [Arthur Kill Rd](#) adjacent to Fishkills Park in Great Kills.



At 7.8 ft MLLW / 2.3 ft MHHW

Kearney NJ

Route 7 and Fishhouse House Rd were flooded and impassable to traffic due to inundation from the Hackensack River. Emergency management reported cars stuck in the water with rescues needed during the morning high tide cycle on March 9th.

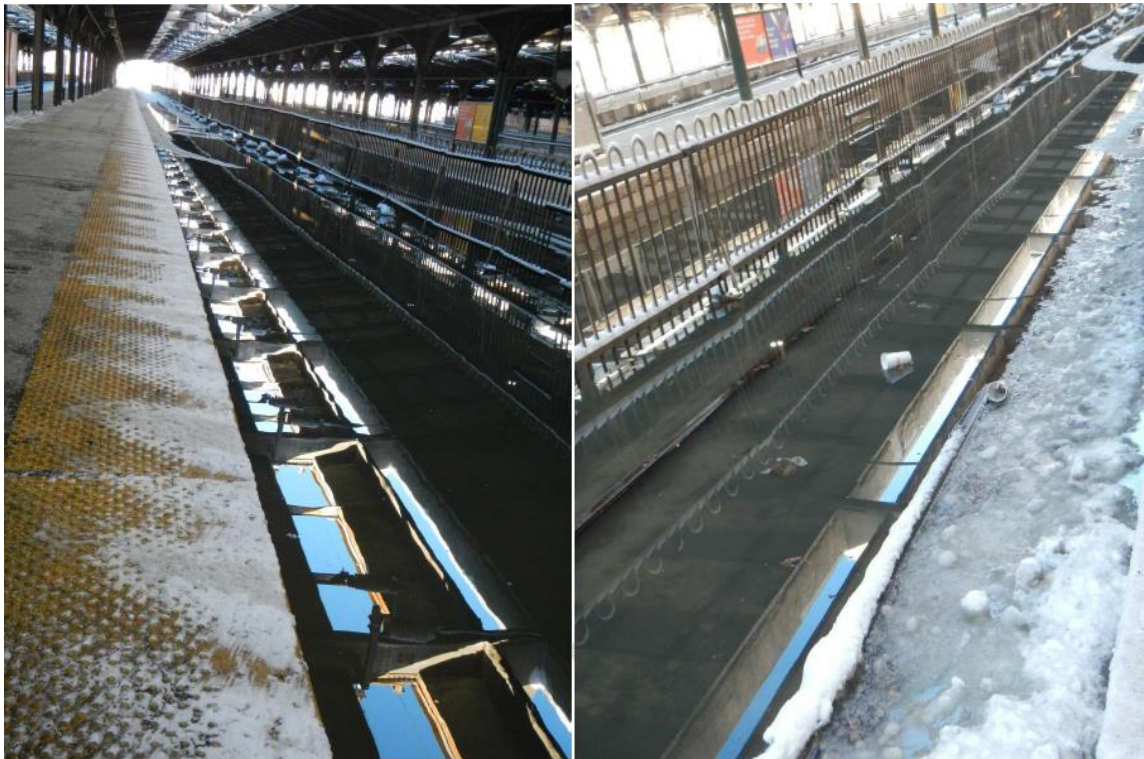
(3/9/13 630am)

Hoboken NJ

Hoboken Terminal – Minor flooding of Ferry Ticketing area and Terminal Plaza (1/24/2016) Credit NJ Transit



Minor flooding on Tracks 8-11 (1/24/2016) Credit NJ Transit





At 7.7 ft MLLW / 2.2 ft MHHW

Kearney NJ

Route 7 and Fishouse House Rd were flooded and closed to traffic due to inundation from the Hackensack River. (12/9/2014 1030am)

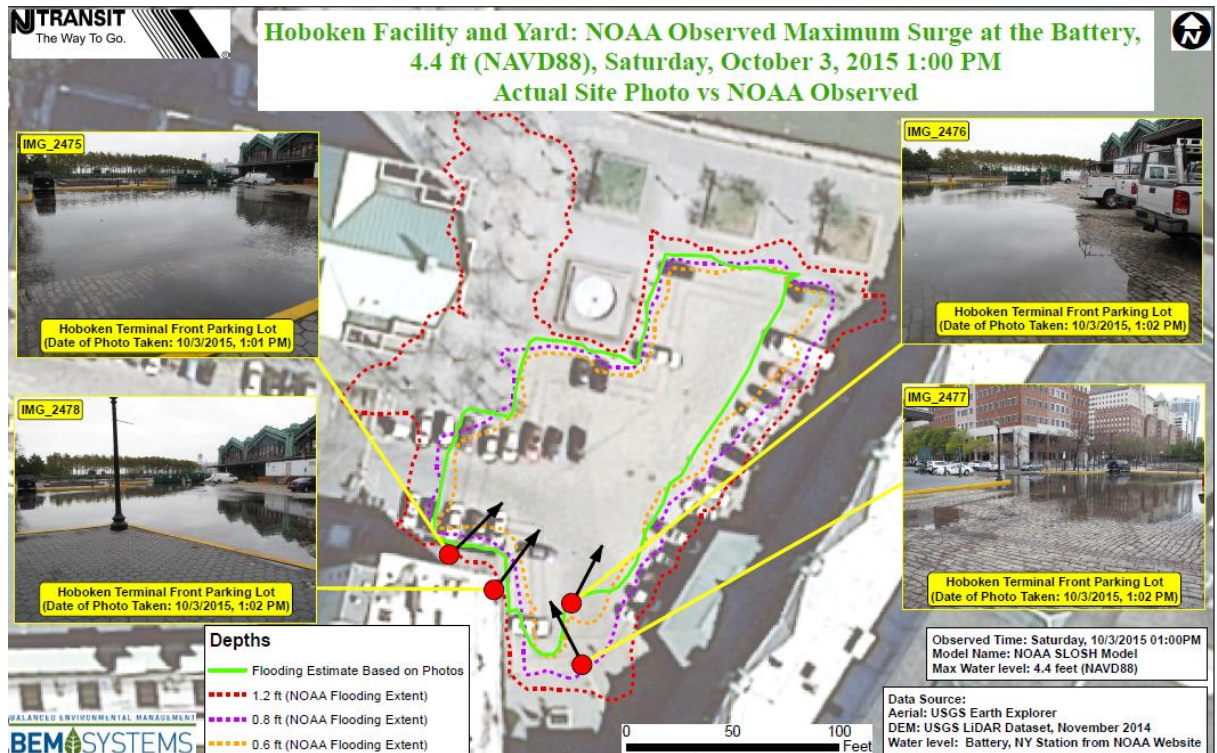
East Newark NJ

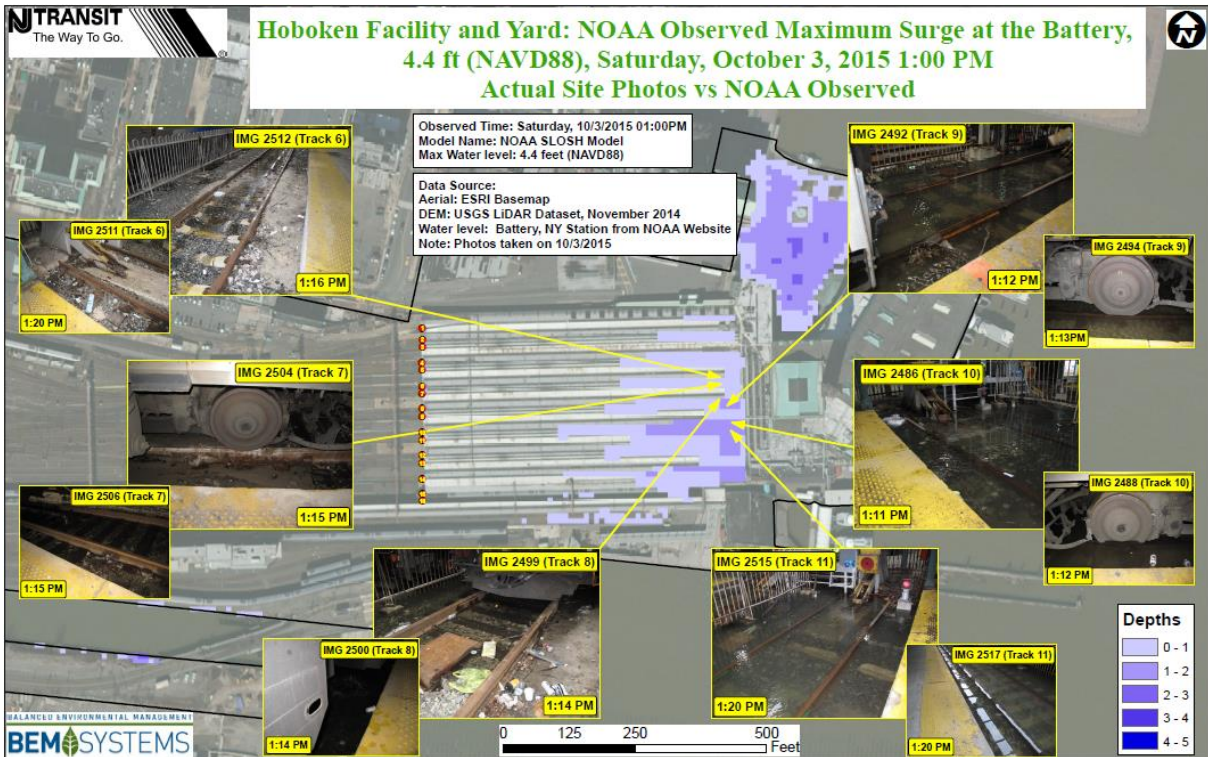
Passaic Ave closed between Central and Johnston Avenues due to inundation from Passaic River.

At 7.6 ft MLLW / 2.1 ft MHHW

Hoboken

Minor flooding of Hoboken Facility parking lots and tracks. (Credit NJ Transit)





At 7.2 ft MLLW / 1.7 ft MHHW

Staten Island

West Shore- Inundation near [Travis Ave and Victory Blvd](#) in the [Fresh Kills](#) area. (6/3/12 830pm)

Kearney NJ

Inundation of [Fishouse Rd. in S. Kearney](#) by the Hackensack River...near the PSEG plant. (6/3/12 830pm)

Minor Flood threshold (ft above datum)

- MLLW / NGVD / MHHW / NAVD88
- 7.2' / 5.3' / 1.7' / 4.2'

At 7.0 ft MLLW / 1.5 ft MHHW

Hoboken- Minor inundation beginning into [Hoboken Facility parking lots and tracks](#) (9/19/2017 AM)