

Hudson River at Piermont

At 11.6 ft MLLW / 10.7 ft NGVD / 9.7 NAVD88 / 7.6 ft MHHW –



Significant damage along low lying sections of Hudson River shoreline in Piermont and Stony Point.

Stony Point - Mandatory evacuations were ordered in the Grassy Point section of the Town of Stony along the Hudson River. Approximately 400 people were evacuated from there homes. Over 100 of these individuals are still not able to return to there homes.

Piermont - Approximately 300 individuals were directed to evacuate their homes and businesses.

At 7.5 ft MLLW / 6.6 ft NGVD / 5.6 NAVD88 / 3.5 ft MHHW – (01/13/2024 – SE gales > S/SW SCA + 1 to 1 1/2" of rain)

Stony Point – 1 ft of inundation on [River Rd](#) and North Street. Heavy flooding along riverfront seawall, Riverfront Park.



Piermont - Anything above 5 ft NGVD makes 4 roads into and out of town impassable for cars, and a number of homes unreachable by car. Homes didn't lose power, but all 3 homes had cars that needed to be towed out of flooded roadways. Lots of basement pump-outs were needed.

Flooding and road closures along Sparkill R and Hudson R. No power loss, sump pumps working. Sanitary sewer overflows multiple locations.





[Cold Spring](#) – Cold Spring police closed roads west of Lunn Terrace in the lower village as of 11:30 a.m. on Saturday (Jan. 13) because of flooding. In Cold Spring, the Hudson River flooded West Street, parts of lower Main, and New Street even before high tide at 12:30 p.m. Until the water recedes and debris can be cleared, roads west of Lunn Terrace are open only to people who live on the affected streets



Photo by Derek Graham

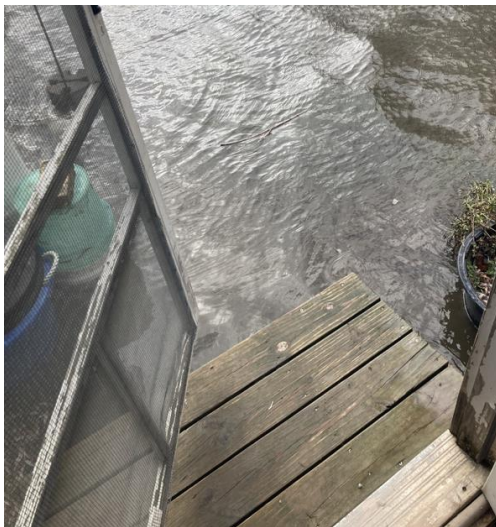
[Croton Harmon](#) and [Garrison](#) Metro North Line - Flooding impacted Manitou-Cold Spring and Philipse Manor-Croton Harmon lines



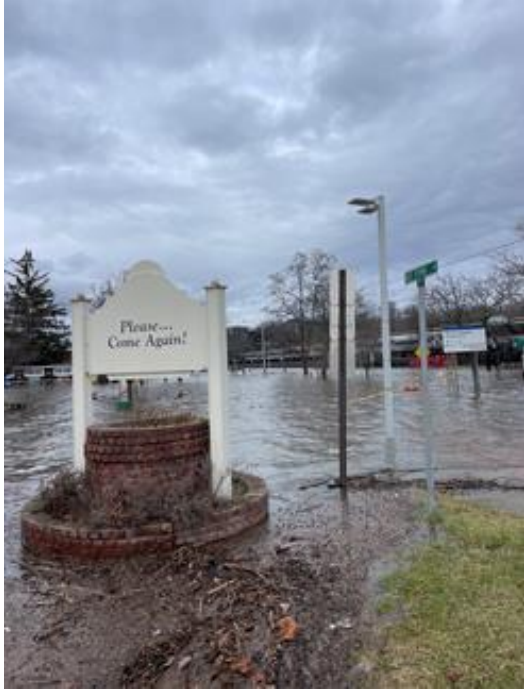
[Garrison Landing – Philipstown NY](#) – The park at Garrison’s Landing was submerged this morning. The water reached to the back door of the Garrison Art Center’s pottery studio.



Photos by Charles Rowe



[Beacon, Dutchess NY](#) – high tide of the Hudson River [once again rose into the parking lots of Lock Dock Park and the Beacon Train Station](#). Cars were parked at Long Dock, and at least one of them was floating. Welcome to Beacon sign was surrounded by water and rows of parking spots were under water. Access to Pete and Toshi Seeger Riverfront Park was completely blocked by the Hudson River, which had the current moving through it as if it weren’t disturbing anything, just doing its tide thing.



Newburgh -



Fort Montgomery – [Mine Dock](#)



[Tarrytown](#) –



At 7.3 ft MLLW / 6.4 ft NGVD / 5.4 NAVD88 / 3.3 ft MHHW – (1/10/2024 – SE Storm > WSW Gale + 3-4” of rain)

Piermont - Anything above 5 ft NGVD makes 4 roads into and out of town impassable for cars, and a number of homes unreachable by car. Homes didn't lose power. Lots of basement pump-outs were needed.

End of Piermont Pier an hour before high tide...



At 7.2 ft MLLW / 6.3 ft NGVD / 5.3 NAVD88 / 3.2 ft MHHW –



Piermont- [Ferry Rd](#), Lower portions of [Paradise Rd](#), River Lot and Lot D were closed due to tidal flooding.

(12/18/2023 - SE Gale > WSW Gale) Anything above 5 ft NGVD makes 4 roads into and out of town impassable for cars, and a number of homes unreachable by car. Homes didn't lose power. Lots of basement pump-outs were needed. One resident moved out and is planning to abandon the first floor, and expand the second floor to become the new main space

Stony Point - Grassy Point along the Hudson River in Rockland County. Tidal Surge from the Hudson River temporarily obstructed some local roads and parking areas.

At 6.9 ft MLLW / 6.0 ft NGVD / 5.0 NAVD88 / 2.9 ft MHHW (12/23/2022 – SE Storm > to S Gales)

Piermont - Above 5 ft NGVD makes 4 roads into and out of town impassable for cars, and a number of homes unreachable by car.

Croton on the Hudson- Westchester NY (credit @BHealy314)



Cortland Westchester NY - NYSDOT reports Flooding and Road Closure on US 6 both directions at Camp Smith Dr all lanes of 2 lanes blocked due to flooding. Metro North Hudson Line Service is temporarily suspended between Poughkeepsie and Peekskill because of flooding.



[Ossining, Westchester NY](#)



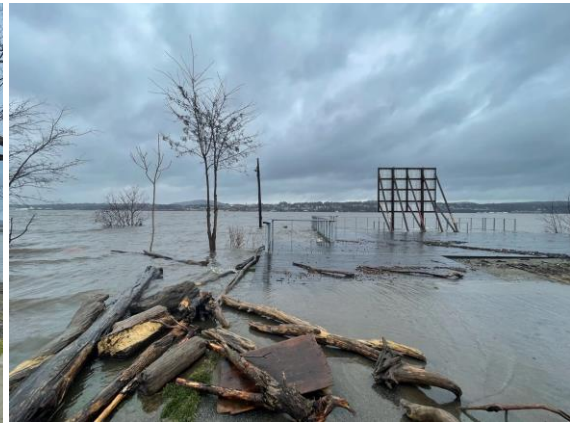
[Cold Spring, Putnam NY –](#)



Newburgh- Orange County NY – [Front St](#)



Beacon – Dutchess County NY – [Long Dock Park](#)



At 6.4 ft MLLW / 5.5 ft NGVD / 4.5 NAVD88 / 2.4 ft MHHW

Piermont- Flooding in Lot D, the River lot, on Paradise ave, and Ohio, Ladik, and Bridge street above 4 ft NAVD88.

Peekskill – Minor Flooding into [Camp Smith along Annsville Creek](#)

At 6.1 ft MLLW / 5.2 ft NGVD / 4.2 NAVD88 / 2.1 ft MHHW –

Piermont- Flooding in Lot D, the River lot, on Paradise ave, and Ohio, Ladik, and Bridge streets Bridge street above 4 ft NAVD88.

Minor flooding on [Paradise Rd](#) and [Ferry Rd](#)



At 5.9 ft MLLW / 5.0 ft NGVD / 4.0 NAVD88 / 1.9 ft MHHW -

Piermont - Above 4 foot NAVD88 we typically see flooding in Lot D, the River lot, and on Paradise Ave, Ohio, Ladik, and Bridge streets

At 5.7 ft MLLW / 4.8 ft NGVD / 3.8 NAVD88 / 1.7 ft MHHW -

Piermont- Road closed due to flooding on [Paradise Rd](#) and [Ferry Rd](#) (1/23/2016)

Stony Point – Roads closed due to Flooding on [Beach Rd](#) (1/23/2016)

Croton on the Hudson – 3” of flooding at the Croton on Hudson train station, coming up through storm drains. (9/20/2024)





At 5.3 ft MLLW / 4.4 ft NGVD / 3.4 NAVD88 / 1.3 ft MHHW-

Piermont- Minor flooding on Paradise Rd and Ferry Rd (9/19/2017)

At 5.0 ft MLLW / 4.1 ft NGVD / 3.1 NAVD88 / 1.0 ft MHHW-

Croton on the Hudson – Flooding begins at the Croton on Hudson train station

