

Moriches Bay at Moriches

At **6.4 ft MLLW** / 6.1 ft NGVD / **4.0 ft MHHW**

Westhampton –

[Jessup Lane leading to Jessup Lane Bridge](#) impassable with 2+ ft of inundation along Moriches Bay.



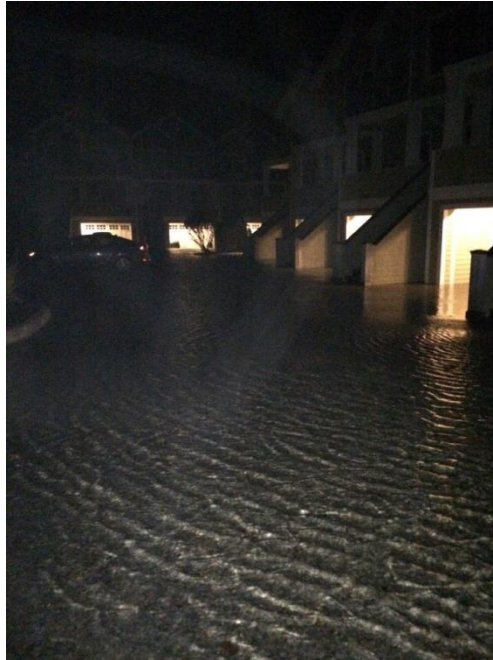
[Seafield Lane/Point](#) impassable with 2+ft inundation along Quantuck Bay (left). [Beach Lane](#) impassable with 2+ft inundation along Quantuck Bay.



At **5.3 ft MLLW** / 5 ft NGVD / **2.9 ft MHHW**

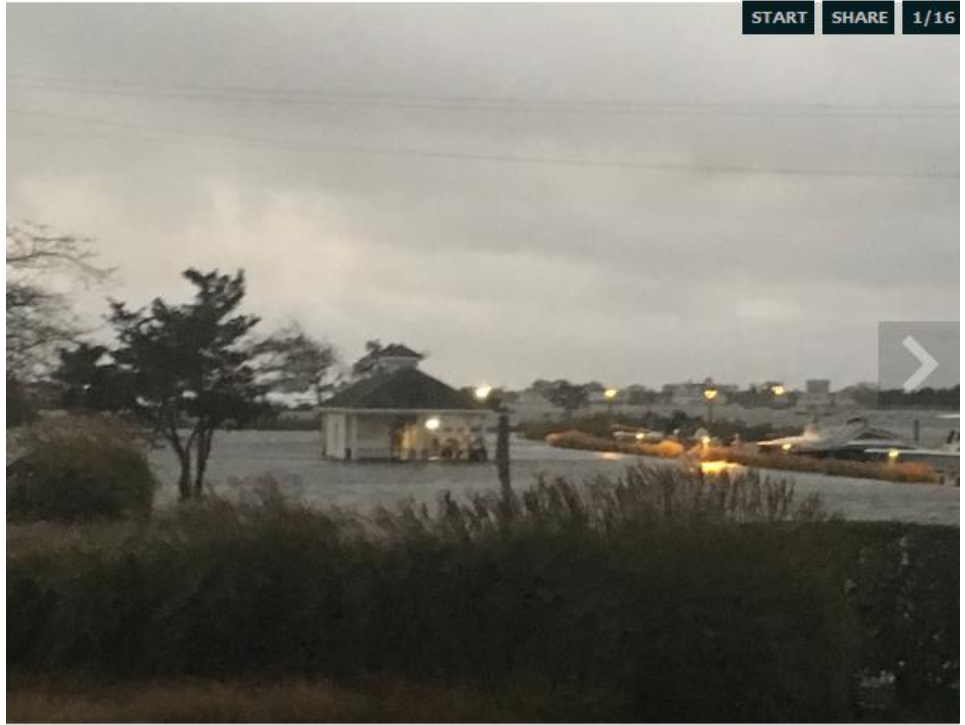
Westhampton –

[Baypointe Yacht Club, Dune Rd](#) , Westhampton Beach



[Hampton Court Marina, Dune Rd](#), Westhampton Beach





Westhampton Beach
Pattie/

Credit News12 LI

Eastport –

[South Bay Avenue Marina](#) inundated



Mastic/Shirley –

1 to 3 ft inundation on [Grandview Avenue](#) in Shirley



1 to 2 ft inundation on [Lincoln Avenue, South of Elm Road](#). (Credit News 12 LI)



1 to 3 ft inundation, from [Trafalgar and PineTree Drive](#) and points SW and [Trafalgar and GrandView](#) and point SE. High waves from long fetch in WSW flow down LI sound

Pic of of [Trafalgar and GrandView](#) inundation below, looking SE



1 to 2 ft inundation of [Smith Point Park parking](#) lot



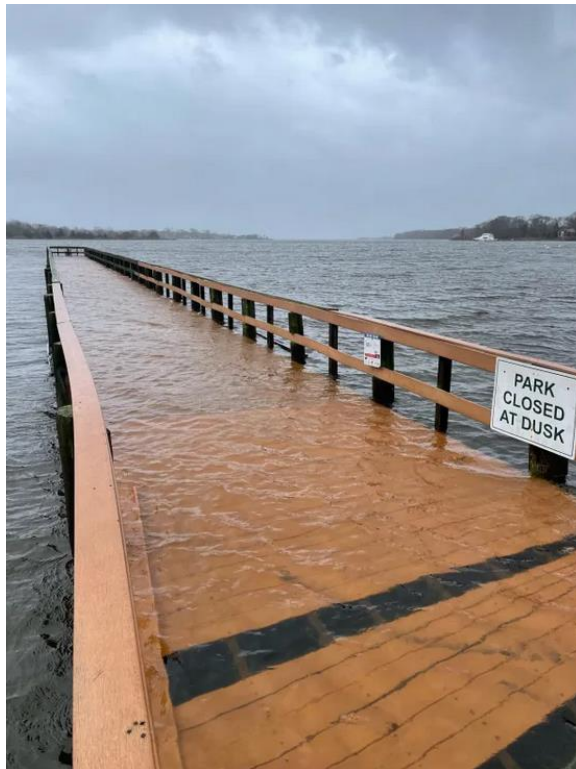
1 to 2 ft inundation on [Roneck Ct](#)



At **5.2 ft MLLW** / **4.9 ft NGVD** / **2.8 ft MHHW**

Mastic –

Flooding on Riviera Drive along [Second Neck Creek](#)



1 to 2 ft flooding along on [Shore Drive](#) (left) along Home Creek, and along [Whittier Drive](#) (right)



Less than 1 ft Flooding on [Hickory Rd](#)



Westhampton –

Flooding on [Exchange Place](#) from Quantuc Bay



At 4.2 ft MLLW / 3.9 ft NGVD / 1.8 ft MHHW

Mastic Beach – 1 to 2 ft of inundation on Wavecrest Drive (Riverhead Patch) (1/24/2017)





At 3.7 ft MLLW / 3.3 ft NGVD / 0.7 ft MHHW

East Moriches - A flooded dock at Maple Avenue in East Moriches (1/23/2017)

