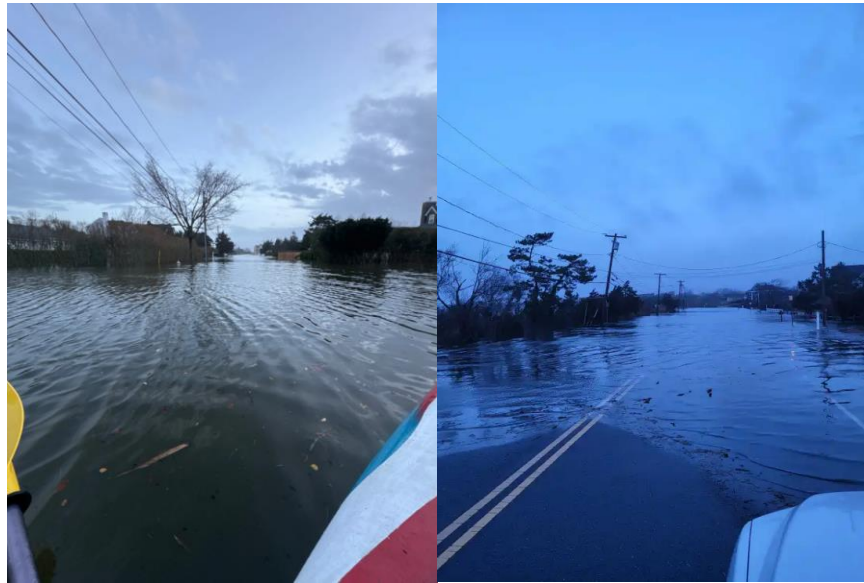


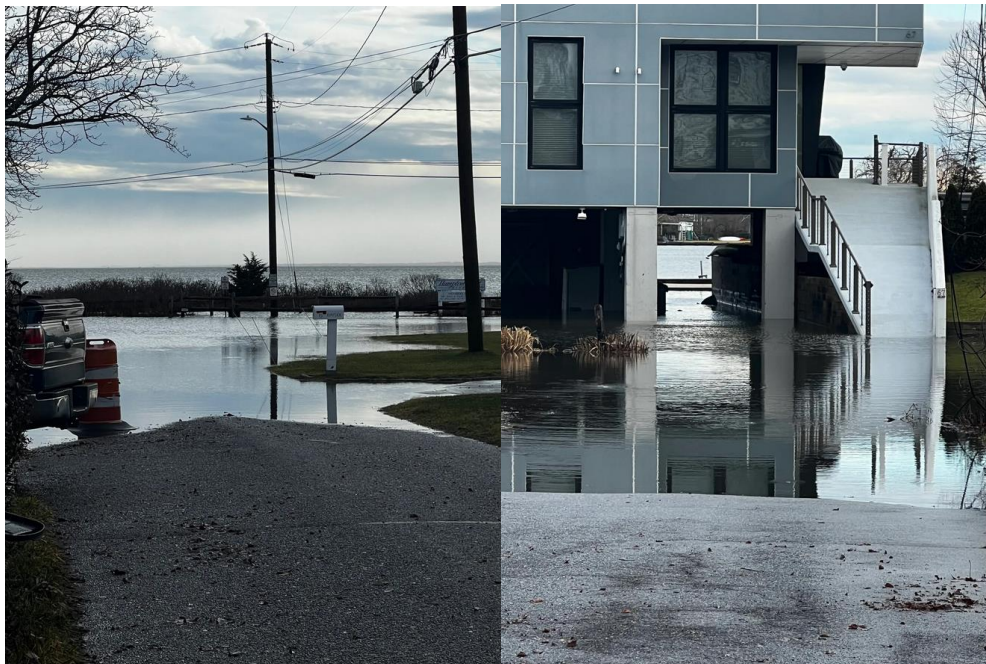
## Shinnecock Bay at Ponquogue Bridge

At **7.4 ft MLLW** / **6.5 ft NGVD** / **4.2 ft MHHW** - (1/10/2024 - SE Storm force shifting to WSW gales, with 10 to 15 ft waves at buoys (likely 15 ft breaking surf) at time of high tide)

Westhampton - [Seafield Lane/Point](#) impassable with 2+ft inundation along Quantuck Bay (left).  
[Beach Lane](#) impassable with 2+ft inundation along Quantuck Bay.



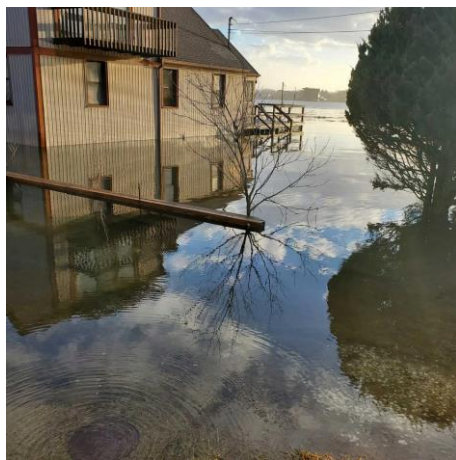
East Quogue – 1-2 ft inundation along Shinnecock Bay front homes on [Little Pine Lane](#).



Hampton Bays – 2+ ft inundation on [Foster Avenue by Shinnecock USCG station](#) making it impassable (left). 1 ft inundation along [Shinnecock Canal over Canal Rd](#) (right)



Southampton – Inundation from Shinnecock Bay onto [Sweet Briar Rd](#) (top), [Far Pond Rd](#) (center), [Little Neck Rd](#) (bottom left) Shinnecock Coastal Guard Station (bottom right)

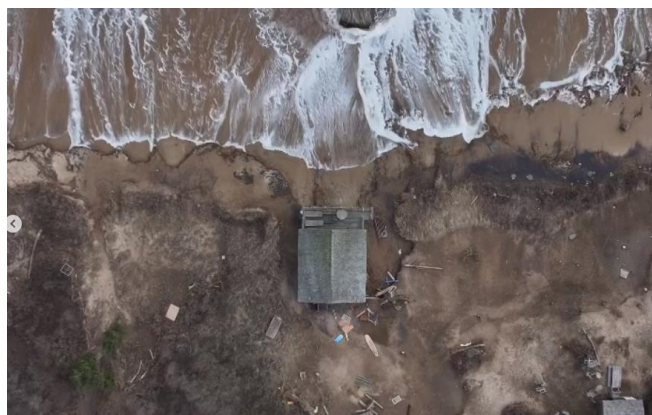




East Hampton – Overwash and inundation onto [Beach Lane](#)



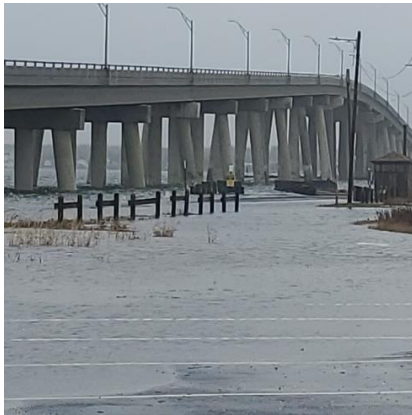
Montauk – One oceanfront home destroyed. Overwash and inundation onto several streets across the south shore of Montauk, including [South Emerson Ave.](#)





At **7.0 ft MLLW** / **6.1 ft NGVD** / **3.8 ft MHHW** – (12/23/2022) Southeast to south winds of 25 to 35 mph with gusts of 55 to 65 mph were experienced along the coast the evening of the 22nd into the early morning of the 23rd ahead of a warm front, before veering to the south and continuing at that speed through the morning of the 23<sup>rd</sup>. The most prominent impacts occurred from a storm surge of 3 (locally 4 ft in back bays), coinciding with an astronomically high tide (perigean spring tide) on the morning of Dec 23rd.

#### Hampton Bays – Edward Warner Park by Ponquogue bridge



2+ ft inundation on Foster Avenue by Shinnecock USCG station making it impassable



Dune Rd west of Shinnecock Inlet



[Shinnecock Shores-Pine Neck Landing](#) – Several hundred yards from bay front of 1 to 2 ft inundation on roads and adjacent properties



At **6.6 ft MLLW** / **5.7 ft NGVD** / **3.4 ft MHHW** – (12/17/2023) SSE Storm force shifting to WSW gales, with likely 20 to 25 ft breaking surf (Buoy 44025) at time of high tide)

Hampton Bays - Flooding on Dune Road east of the Ponquogue Bridge, west of Shinnecock Inlet



Napeague Beach – Overwash over dune front onto access roads



At **5.4 ft MLLW** / **4.5 ft NGVD** / **2.2 ft MHHW**

East Quogue – 1 ft inundation on Shinnecock Rd from Shinnecock Bay (9/20/2024 - Spring tide and persistent N/NE flow)



At **5.2 ft MLLW** / **4.3 ft NGVD** / **2.0 ft MHHW**

Hampton Bays -Flooding on Dune Road west of the Ponquogue Bridge (credit Jay Schneiderman News 12 LI)



At **5.0 ft MLLW** / **4.1 ft NGVD** / **1.8 ft MHHW**

Hampton Bays - Flooding on Dune Road east of the Ponquogue Bridge, west of Shinnecock Inlet (9/19/2024 – Spring tide and persistent N/NE flow)





At 4.9 ft MLLW / 4.0 ft NGVD / 1.7 ft MHHW

Shinnecock Inlet – 1 ft of inundation in parking lot on West Side of Inlet. (8/19/2024 5-6 ft breakers and spring tide)

