

## Watch Hill Impacts

At **4.7 ft MLLW / 5.1 ft NGVD / 3.2 ft MHHW** (12/18/2023 - SE Storm Force> WSW Gale. 15-20 ft breaking ocean front waves perpendicular to coast)

[Ocean Beach](#) – Inundation around town. Every low-lying home is flooded. The water is over our knees in town. Up to 3 ft deep on [Bay Walk](#). (12/18/2023) Credit: SCFRES & Lauren Chenault (lower right image)



[Davis Park to Seaview](#) - Every community on both the bay and ocean sides was majorly impacted by the storm eroding “most” of the dunes and protective barrier. Many areas also saw washovers where the ocean spilled over to the bay. Some of these houses are less than 5 feet from the water. Credit: Long Island Advance



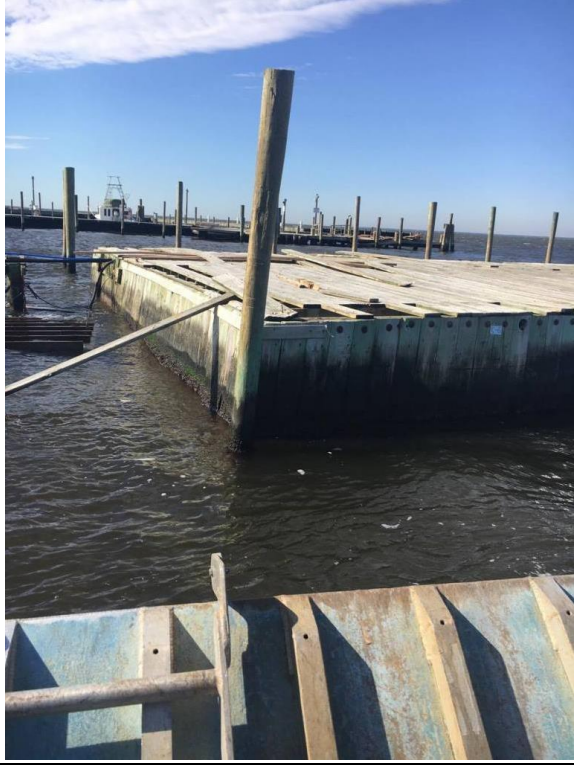
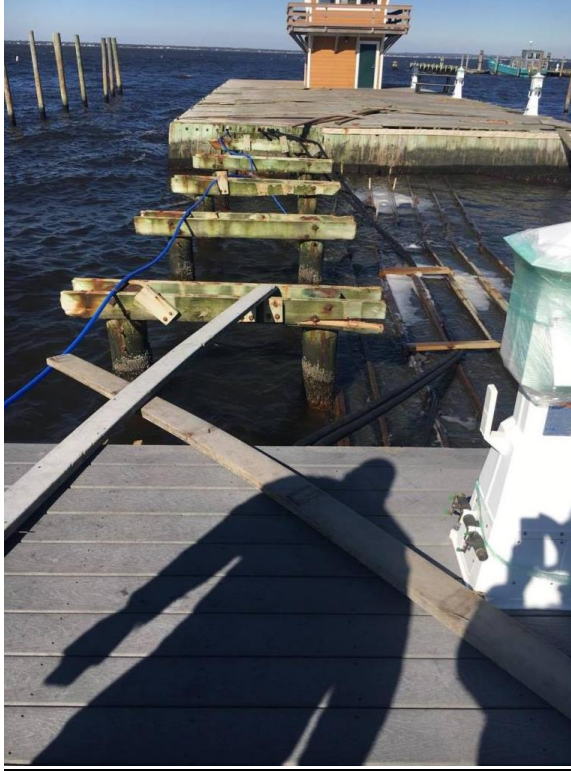
Smith Point- credit MaraHlavac



At **4.2 ft MLLW** / **4.6 ft NGVD** / **2.7 ft MHHW**

Davis Park – Extensive damage (\$2 million) to Davis Park Marina due to combination of 2 to 3 ft inundation, longshore current and wave action. (10/30/2017) ([Credit fireislandandbeyond.com](http://fireislandandbeyond.com))





At 3.9 ft MLLW / 4.2 ft NGVD / 2.3 ft MHHW (12/23/2022 SE Storm force - The most prominent impacts occurred from a storm surge of 3 (locally 4 ft in back bays), coinciding with an astronomically high tide (perigean spring tide) on the morning of Dec 23rd. Considerable shoreline impacts were experienced along the Long Island oceanfront as well due to 7 to 11 ft breaking surf during the Dec 23rd morning high tide with widespread beach flooding and dune base erosion, with scattered overwashes. SE (130) 14-16ft@7sec waves at time of high tide.)

Fire Island - The Fire Island ferry canceled evening service of the South Ferry that runs between Shelter Island and North Haven, noting that water levels were "the highest we've had since Sandy."



Smith Point Park Beachfront –



At 3.7 ft MLLW / 4.0 ft NGVD / 2.1 ft MHHW

[Blue Point](#) – 1 to 2 ft Inundation along lowest-lying portions of waterfront communities(1/24/2017)



[Saltaire](#)– Severe flooding on Great South Bay side of town. [Dock](#) was under water. Ocean side held up well. (1/24/2017)



Inundation almost ½ way across town from Great South Bay.



[Ocean Beach](#) – Inundation around town. Up to 2 ft deep on [Bay Walk](#).

Inundation into [Ocean Beach Firehouse](#). (1/24/2017)



Inundation into [Ocean Beach Firehouse](#).



At **3.3 ft MLLW** / **3.6 ft NGVD** / **1.7 ft MHHW**

[Kismet](#) – [Burma Road leading into Kismet](#) minor flooded hydrostatically 2 hrs before high tide.  
(9/19/2017)



Ocean Beach - [Main walk in Ocean Beach Village](#) beginning to flood 2 hours before high tide.  
(9/19/2017)

