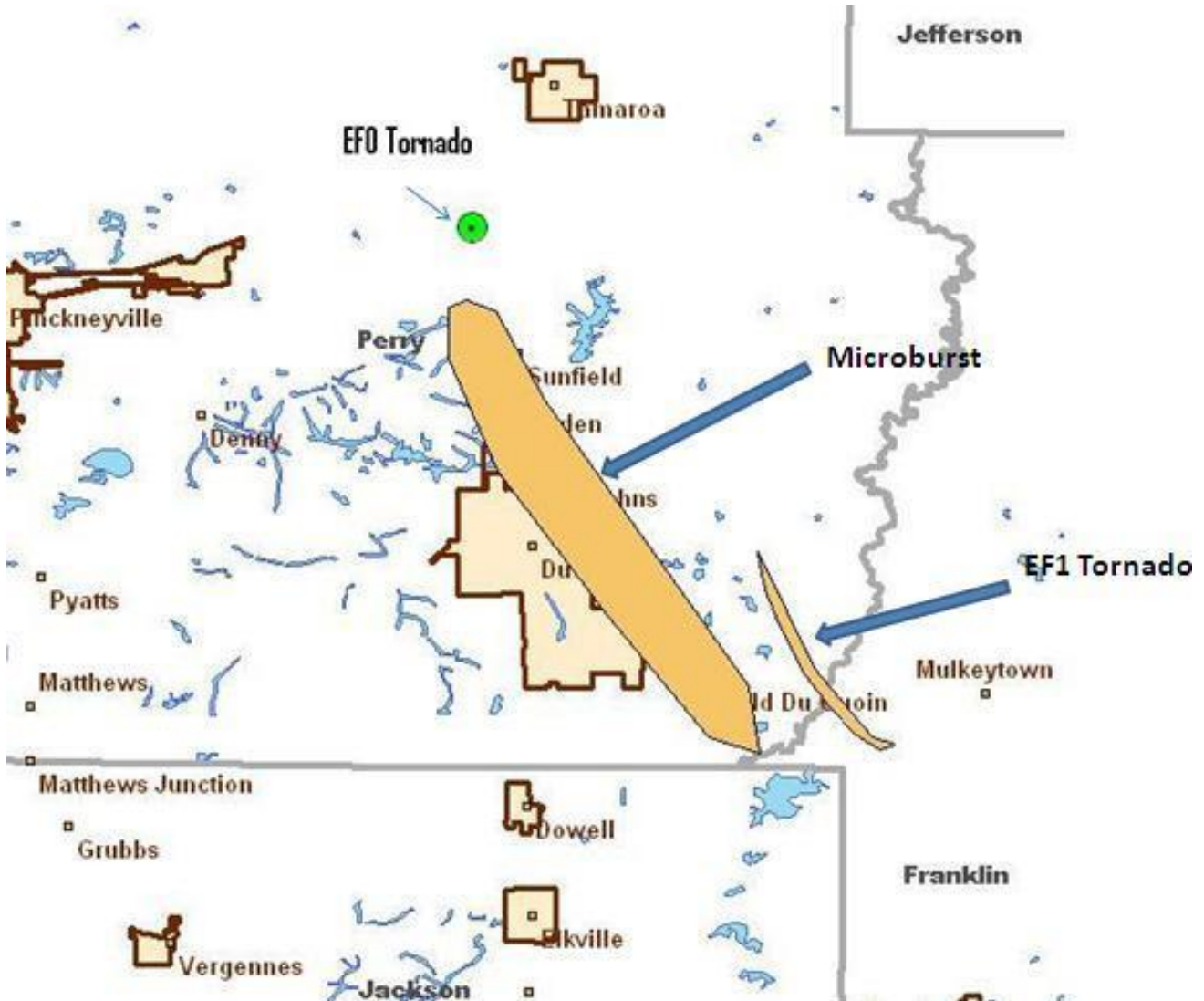


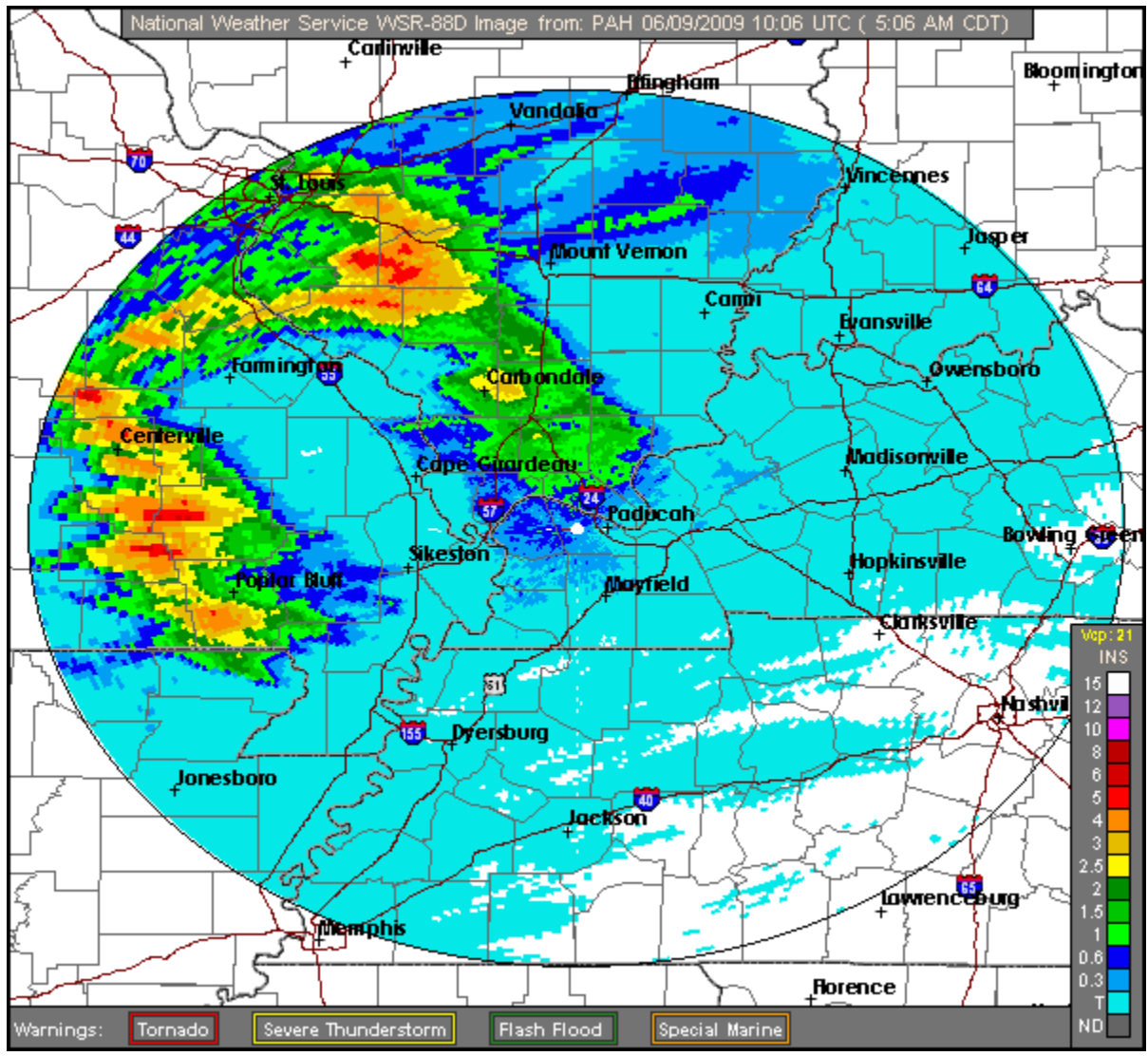
# June 8, 2009 Severe Storms

Two clusters of thunderstorms developed late Monday afternoon (June 8), then tracked southeast across southern Illinois and southeast Missouri. The Storm Prediction Center issued Severe Thunderstorm Watch 353 at 4:35 P.M., valid until 10 P.M. One complex of storms tracked southeast across southern Illinois. The other complex moved southeast into the Poplar Bluff area. The list of events included an EF-1 tornado, a few reports of quarter-size hail, and several damaging wind gusts from 60 to 70 mph. The storms weakened over western Kentucky, but not before producing a microburst near Paducah.

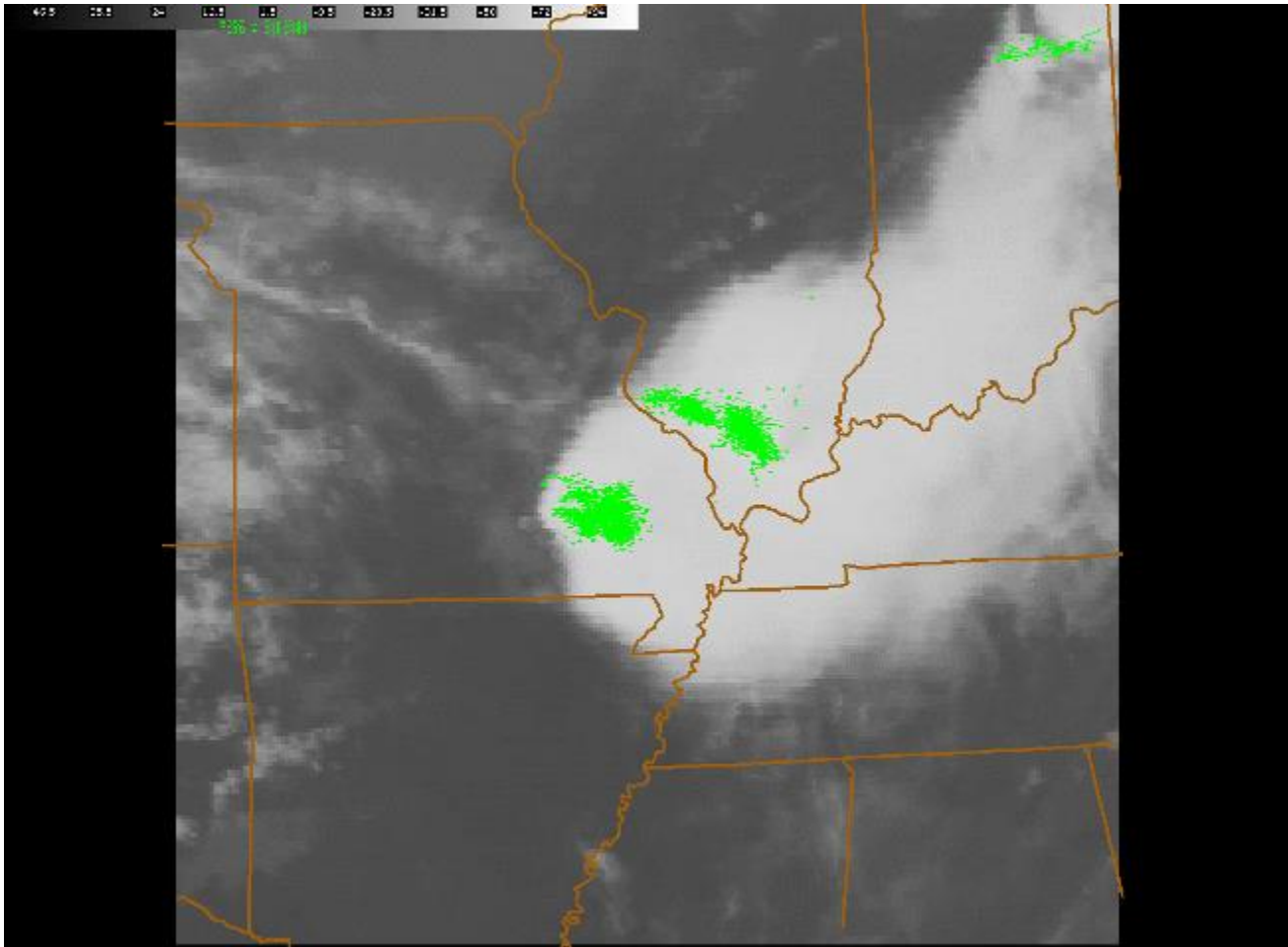
## Damage Paths



The Storm Total Precipitation image from the Paducah radar indicates where the two complexes tracked.



Below is an infrared satellite image of the two storm complexes shortly before 10 P.M. The complexes appear as a single complex in satellite imagery. The green spots represent lightning strikes over the one-hour period prior to the image. Over 5,000 strikes were recorded in that time period on this image.



## Damage Surveys

PUBLIC INFORMATION STATEMENT  
NATIONAL WEATHER SERVICE PADUCAH KY  
950 PM CDT TUE JUN 9 2009

...DAMAGE SURVEY RESULTS FOR PERRY AND FRANKLIN COUNTIES OF ILLINOIS...

THE FOLLOWING IS THE DAMAGE ASSESSMENT FOR A DAMAGING WIND EVENTS THAT OCCURRED MONDAY JUNE 8 2009 IN SOUTHERN ILLINOIS...IN PERRY AND FRANKLIN COUNTIES.

### EVENT NUMBER 1...TORNADO...

- \* EVENT DATE - MONDAY JUNE 8 2009
- \* EVENT TIME - APPROXIMATELY 742 PM CDT
- \* EVENT TYPE - ***EF0 TORNADO***
- \* EVENT LOCATION - 6 MILES NORTH OF DUQUOIN ILLINOIS...APPROXIMATELY 1 TO 1 AND 1/2 MILES NORTH NORTHWEST OF THE INTERSECTION OF HWY 51

AND HWY 154.

\* PEAK WIND - 70 MPH

\* AVERAGE PATH WIDTH - 100 YARDS

\* PATH LENGTH - 1/2 MILE

\* INJURIES - NONE

\* FATALITIES - NONE

\* DISCUSSION/DAMAGE...SEVERAL TREES OR TREE LIMBS DOWNED ALONG WITH A SMALL SHED OVERTURNED.

### EVENT NUMBER 2...DOWNBURST...

\* EVENT DATE - MONDAY JUNE 8 2009

\* EVENT TIME - APPROXIMATELY 746 PM UNTIL APPROXIMATELY 810 PM CDT

\* EVENT TYPE - **MICROBURST**

\* EVENT LOCATION - APPROXIMATELY 4 MILES NORTHWEST OF DUQUOIN IL SOUTH SOUTH EAST THROUGH ST JOHNS AND THE NORTHEAST AND EAST SIDE OF DUQUOIN...SOUTHWARD THROUGH OLD DUQUOIN.

\* PEAK WIND - 75 MPH

\* AVERAGE PATH WIDTH - 3/4 MILE

\* PATH LENGTH - 6 MILES

\* INJURIES - 2 MINOR DUE TO FALLING DEBRIS.

\* FATALITIES - NONE

\* DISCUSSION/DAMAGE...MANY DOZENS TO HUNDREDS OF TREES DOWNED ON HOMES...VEHICLES...POWER LINES AND OTHER STRUCTURES. 8 HOMES WITH MAJOR DAMAGE. 82 HOMES WITH MINOR DAMAGE. 9 VEHICLES DESTROYED. APPROXIMATELY 40 POWER POLES DESTROYED. UP TO 1200 CITIZENS WITHOUT POWER.

### EVENT NUMBER 3...TORNADO...

\* EVENT DATE - MONDAY JUNE 8 2009

\* EVENT TIME - APPROXIMATELY 8:00 PM CDT

\* EVENT TYPE - **EF1 TORNADO**

\* EVENT LOCATION - 3 AND 1/2 MILES EAST OF DUQUOIN SOUTH SOUTH EAST TO 2 MILES SOUTHWEST OF MULKEYTOWN IN SOUTHWEST FRANKLIN COUNTY.

\* PEAK WIND - 95 MPH

\* AVERAGE PATH WIDTH - 200 YARDS

\* PATH LENGTH - 4 AND 1/2 MILES

\* INJURIES - NONE

\* FATALITIES - NONE

\* DISCUSSION/DAMAGE...HUNDREDS OF TREES DOWNED OVER RURAL PERRY AND FRANKLIN COUNTIES.

NOTE: IN ADDITION TO THE ABOVE WIND DAMAGE EVENTS...WIDESPREAD STRAIGHT LINE WIND DAMAGE OCCURRED FROM CENTRAL PERRY COUNTY...AROUND PICKNEYVILLE...EAST INTO WESTERN FRANKLIN COUNTY...AS WELL AS AREAS SOUTH OF THIS LINE. MANY TREES AND TREE LIMBS WERE DOWNED IN THIS BROAD REGION.

SURVEYOR...SHANKLIN



Photo of a shed damaged by straight-line winds just southwest of Pinckneyville...



Photo of a tree down across a driveway in DuQuoin, courtesy of Jeff Profitt...



Photo of a tree down on an SUV, courtesy of Jeff Profitt...



PRELIMINARY LOCAL STORM REPORT...SUMMARY  
NATIONAL WEATHER SERVICE PADUCAH KY  
1107 AM CDT TUE JUN 09 2009

..TIME...	...EVENT...	...CITY LOCATION...	...LAT.LON...
..DATE...	....MAG....	..COUNTY LOCATION..ST..	...SOURCE....
..REMARKS..			
0746 PM	TSTM WND GST	4 N DU QUOIN	38.06N 89.24W
06/08/2009	M65.00 MPH	PERRY IL	TRAINED SPOTTER
REPORTED AT THE INTERSECTION OF U.S. ROUTE 51 AND STATE ROUTE 154.			
0805 PM	HAIL	5 SE SESSER	38.04N 88.99W
06/08/2009	M1.00 INCH	FRANKLIN IL	TRAINED SPOTTER
QUARTER SIZE HAIL REPORTED WITH WIND GUST ESTIMATED BETWEEN 60 AND 70 MPH.			
0808 PM	TORNADO	4 W SESSER	38.09N 89.12W
06/08/2009		PERRY IL	TRAINED SPOTTER

...UNCONFIRMED...E-SPOTTER REPORT OF A POSSIBLE  
RAIN-WRAPPED TORNADO. NO DAMAGE REPORTED...BUT WINDS  
ESTIMATED AT 70 MPH. TIME ESTIMATED.

0820 PM TSTM WND DMG 10 W BENTON 38.01N 89.10W  
06/08/2009 FRANKLIN IL EMERGENCY MNGR

LATE REPORT...TIME ESTIMATED. ONE HOME REPORTED SIDING  
DAMAGE. NUMEROUS TREES AND POWER LINES DOWN THROUGHOUT  
MUCH OF THE WESTERN HALF OF THE COUNTY. SOME RURAL  
ROADWAYS WERE FLOODED.

0830 PM HAIL ROYALTON 37.88N 89.11W  
06/08/2009 M0.75 INCH FRANKLIN IL TRAINED SPOTTER

PENNY SIZE HAIL REPORTED.

0830 PM TSTM WND DMG CARBONDALE 37.72N 89.22W  
06/08/2009 JACKSON IL EMERGENCY MNGR

LATE REPORT...TIME ESTIMATED. REPORTS OF POWER OUTAGES IN  
PORTIONS OF COMMUNITY.

0834 PM HAIL GREENVILLE 37.13N 90.45W  
06/08/2009 M1.00 INCH WAYNE MO TRAINED SPOTTER

QUARTER SIZE HAIL REPORTED.

0852 PM HAIL HERRIN 37.80N 89.03W  
06/08/2009 M0.88 INCH WILLIAMSON IL TRAINED SPOTTER

PENNY TO NICKLE SIZE HAIL REPORTED THROUGHOUT THE  
COMMUNITY OVER THE PAST 15 MINUTES.

0856 PM HAIL 5 E CARTERVILLE 37.76N 88.99W  
06/08/2009 M1.00 INCH WILLIAMSON IL EMERGENCY MNGR

QUARTER SIZE HAIL REPORTED.

0910 PM HAIL WAPPAPELLO 36.94N 90.27W  
06/08/2009 M0.88 INCH WAYNE MO TRAINED SPOTTER

NICKLE SIZE HAIL REPORTED.

0940 PM TSTM WND DMG 2 WSW POPLAR BLUFF 36.75N 90.44W  
06/08/2009 BUTLER MO LAW ENFORCEMENT

LATE REPORT...TIME ESTIMATED. TREE DOWN BLOCKING HIGHWAY  
160. VEHICLE CRASHED INTO THE TREE BUT NO INJURIES  
OCCURRED.

0945 PM TSTM WND DMG 10 SE POPLAR BLUFF 36.66N 90.28W  
06/08/2009 BUTLER MO LAW ENFORCEMENT

LATE REPORT...TIME ESTIMATED. POWER OUTAGES REPORTED IN  
THE COMMUNITY OF BROSELEY. OUTAGES LASTED NEARLY 6 HOURS.

1048 PM TSTM WND GST WEST PADUCAH 37.08N 88.74W  
06/08/2009 M64.00 MPH MCCRACKEN KY ASOS

PADUCAH ASOS MEASURED 56 KNOT GUST. WINDS WERE VERY  
LOCALIZED.