

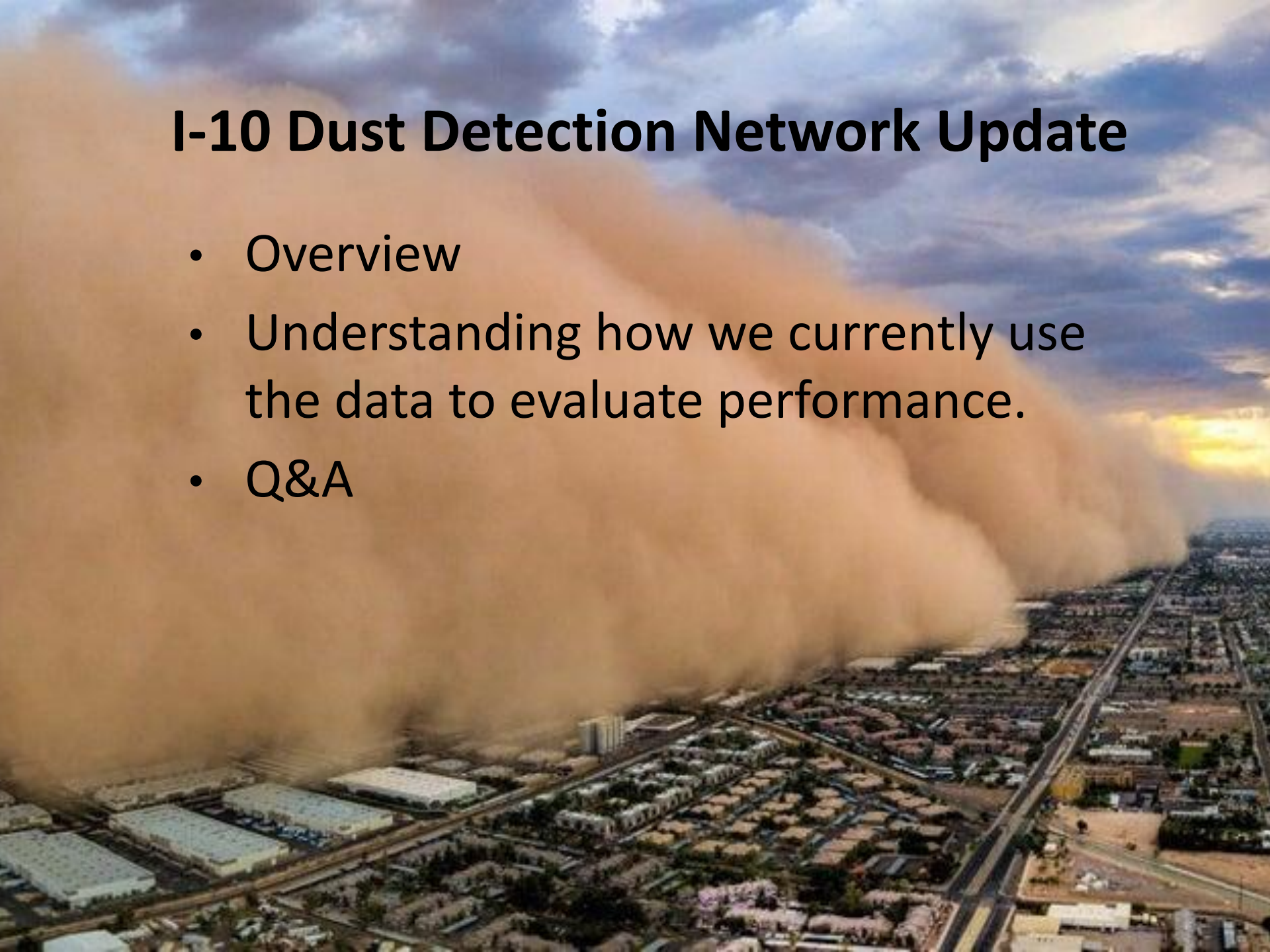
# I-10 Dust Detection Network Update



**Kevin Duby and Joseph Jones**  
**Arizona Department of Transportation**  
**March 24, 2021**  
**[kduby@azdot.gov](mailto:kduby@azdot.gov) and [jjones2@azdot.gov](mailto:jjones2@azdot.gov)**

# I-10 Dust Detection Network Update

- Overview
- Understanding how we currently use the data to evaluate performance.
- Q&A



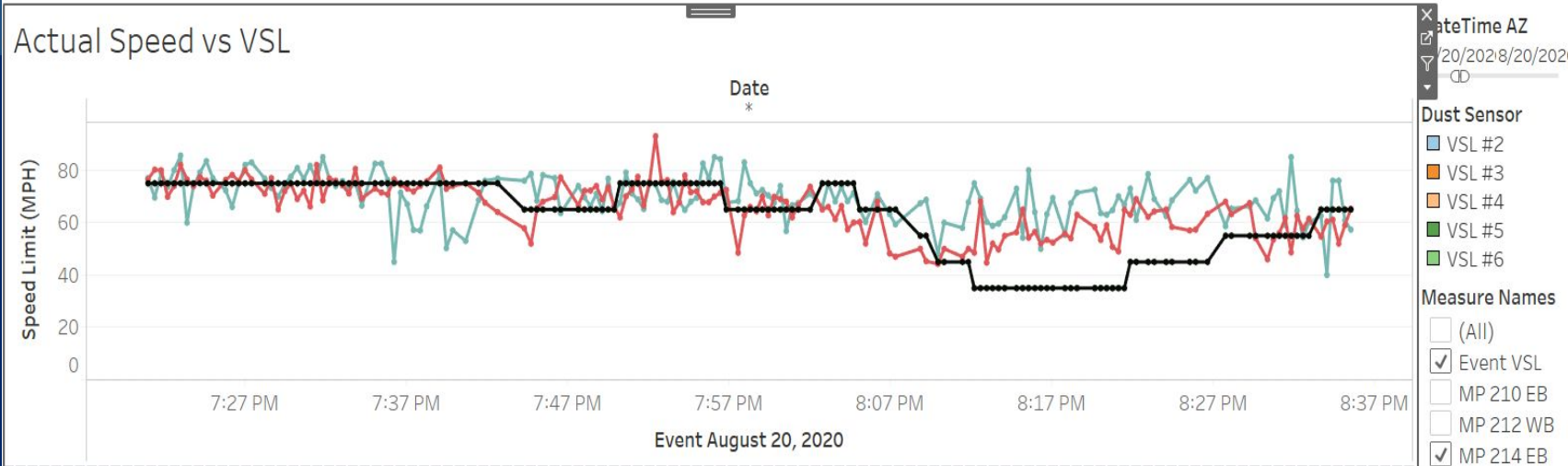
# What is a Dust Detection System?

- Radar Detects Approaching Storm
- Sensors Measure Visibility
- Software Determines Appropriate Speed
- Software Sends Messages to Variable Speed Limit(VSL) signs and Dynamic Message Signs(DMS)
- Closed Circuit TV(CCTV) Verifies Conditions
- Pavement Sensors Measure Speed

## I-10 Dust Detection Network Update

- System is less than a year old.
- Working as expected.
- Still trying to understand the dynamics of the system.

# Dust Detection Evaluation Tools



# Dust Detection Tool

## Next Steps:

- Plans to have operability metrics such as uptime.
- Have after action reviews.
- Improving data presentation.



# I-10 Dust Detection Network Update

Questions?

