

Winter Weather Briefing for Central North Carolina

Covering wintry precipitation potential on Friday, February 12,
2016.

NWS Raleigh, NC

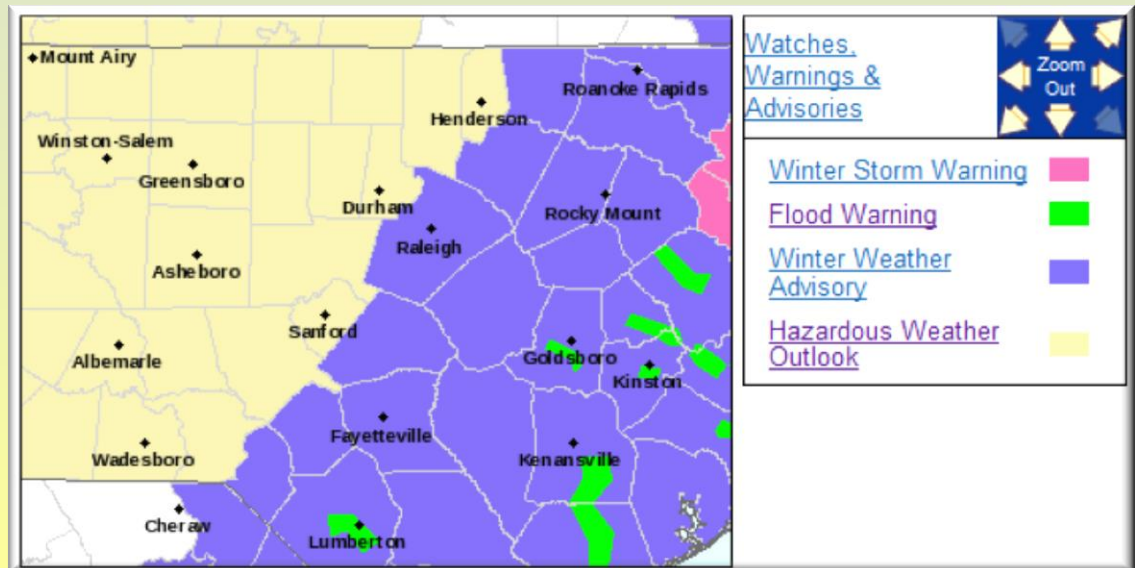
Updated at 350 PM, February 11, 2016

<http://weather.gov/raleigh>

Details & Confidence

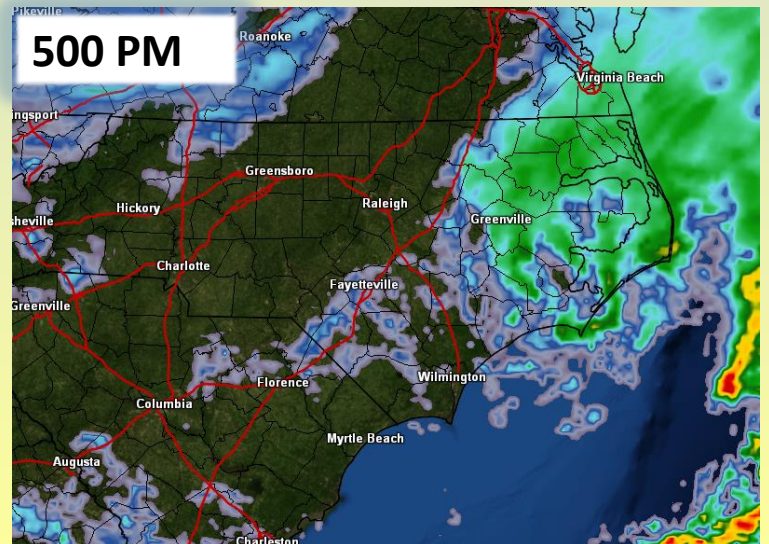
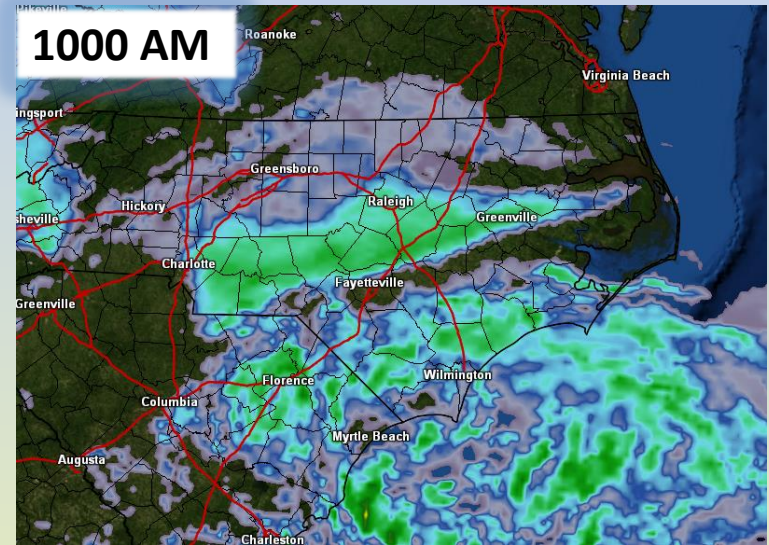
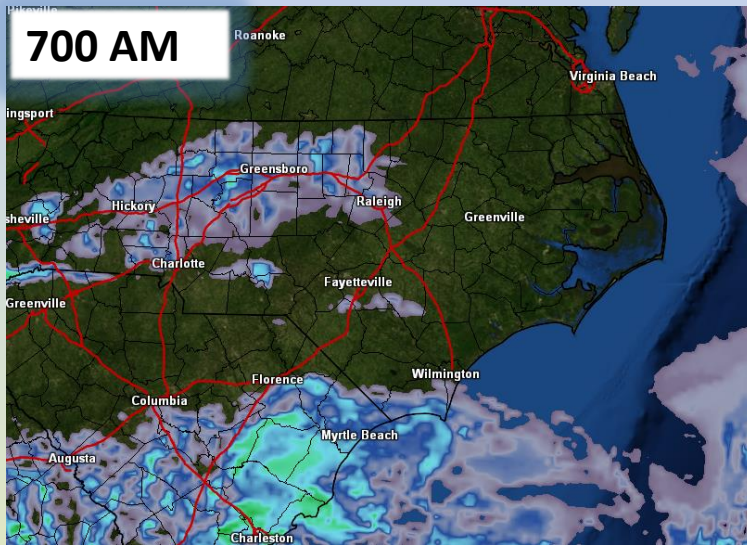
- We are confident that a period of light wintry precipitation will spread across parts of central and eastern NC Friday.
- The precipitation should occur mainly from 8am-4pm, mainly near & east of Highway 1.
- In this area, mostly snow is expected north of Highway 70 and more of a wintry mix is expected south of Highway 70.
- We are confident that the greatest amount of precipitation will fall across the Northern Coastal Plain near Tarboro and Halifax.
- We have lower confidence in the amounts across far southern NC and along the Highway 1 corridor.

Winter weather advisory (in purple) in effect from early Friday morning into Friday evening



Forecast Radar

This is what the radar may look like...

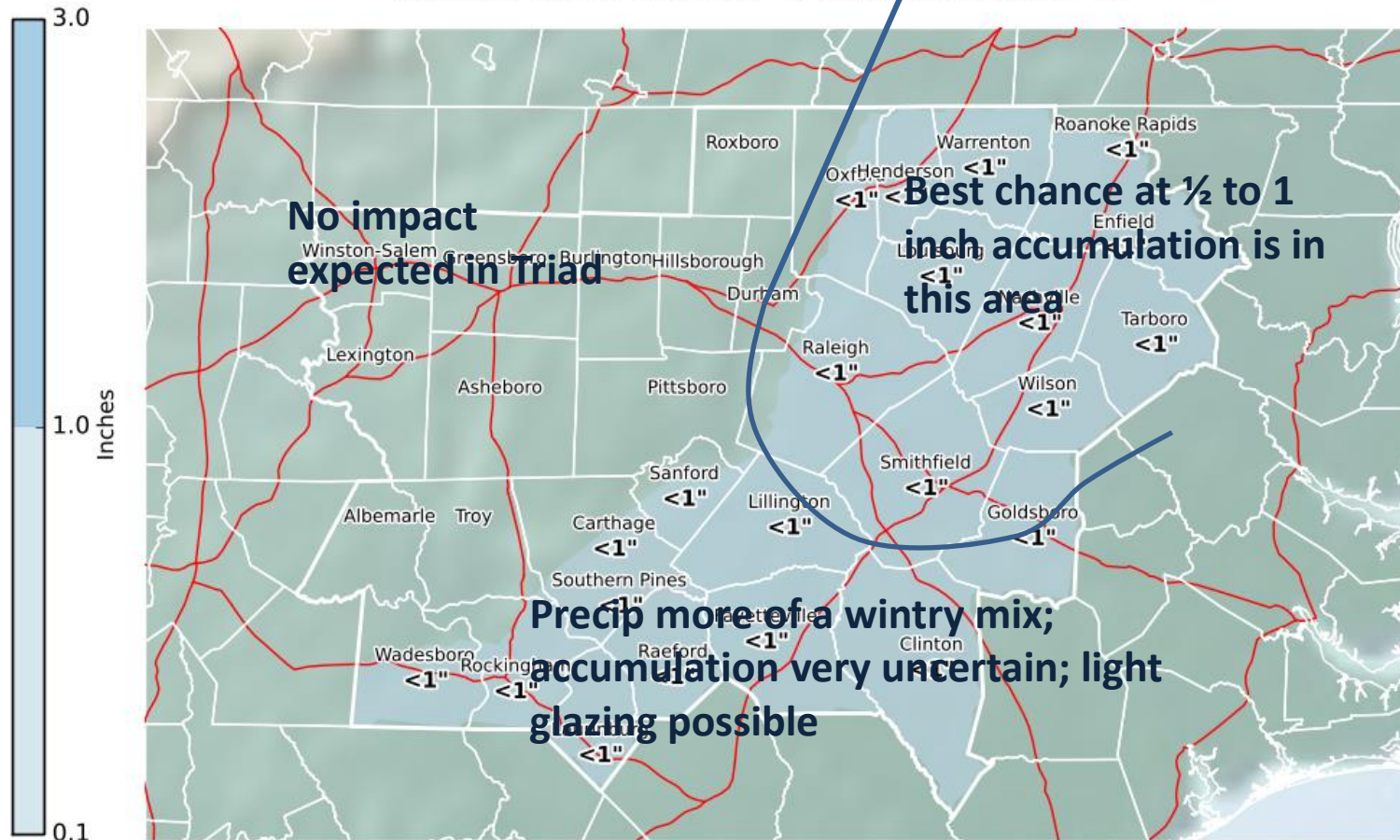


Light Snow and Wintry Mix Friday

Confidence is increasing for a period of light snow or wintry mix Friday, mainly 8am-4pm. A light accumulation of snow and sleet appears likely, especially from Raleigh north and east with amounts approaching an inch in the Tarboro and Roanoke Rapids areas. More of a wintry mix is expected in Goldsboro and Fayetteville.

Storm Total Snow

Valid: 02/12/2016 06:00 AM - 02/12/2016 10:00 PM EST



Wrap-up

- Additional briefings will be emailed as updates are warranted.
- Right now, we do not have any webinars and conference calls scheduled. Should this change, notifications will be emailed.
- For specific hour-by-hour forecast details for your exact location, please visit <http://forecast.weather.gov/gridpoint.php?site=rah&TypeDefault=graphical>
 - This link will include hour-by-hour forecasts for temperature, wind, wind gusts, wind chill, snowfall amounts, etc.