

## Climate and Weather Summary for May 2025

Temperatures in May averaged below normal at Abilene and San Angelo. Precipitation was well-above normal at San Angelo and below normal at Abilene. Table 1 summarizes May 2025 temperature, precipitation, and departure from normal for Abilene and San Angelo.

Site	Average Temperature (°F)	Departure from Normal (°F)	Normal Average Temperature (°F)	Total Precipitation (In.)	Departure from Normal (In)	Normal May Precipitation (In.)
Abilene	73.0°	-1.1°	74.1°	2.80"	-0.41"	3.21"
San Angelo	74.3°	-1.2°	75.5°	5.49"	2.44 "	3.05"

**Table 1: May Climate Data for Abilene and San Angelo.**

Additional temperature and precipitation data for Abilene and San Angelo is summarized in Table 2.

Site	Warmest High Temperature (°F)	Warmest Low Temperature (°F)	Coollest High Temperature (°F)	Coollest Low Temperature (°F)	Maximum Daily Precipitation (In.)
Abilene	98° May 13, 22, 24	76° on May 24	66° on May 5	46° on May 3	0.80" May 6
San Angelo	101° May 13, 24	77° on May 21	64° on May 8	45° on May 3	3.19" May 6

**Table 2: Additional May Climate Data for Abilene and San Angelo.**

- Active May with a number of severe weather events (especially late in the month).
- 11<sup>th</sup> wettest May on record at San Angelo.
- The number of days in May with high temperatures 100 degrees or more were 3 in San Angelo, and zero in Abilene.

Maps of total precipitation and percentage of normal precipitation, for May, are shown in Figures 1 and 2 (below). These maps are from the High Plains Regional Climate Center.

Precipitation (in)  
5/1/2025 – 5/31/2025

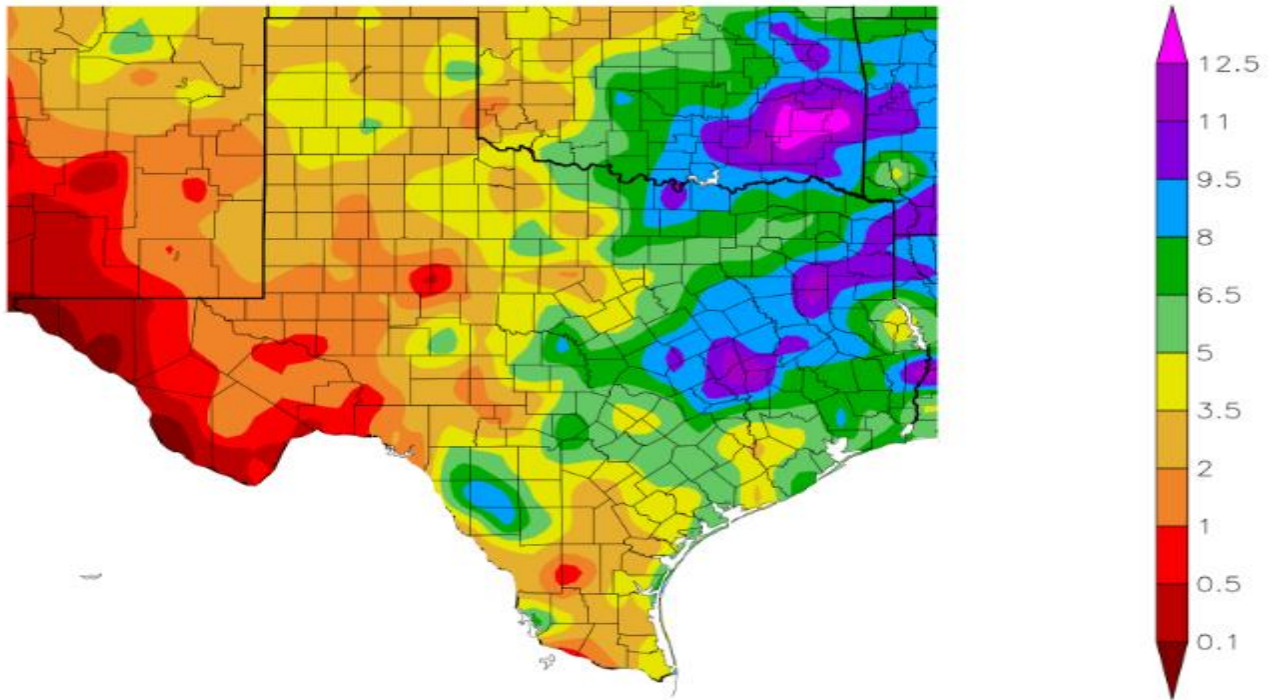


Figure 1: Total Precipitation for May.

Percent of Normal Precipitation (%)  
5/26/2025 – 6/1/2025

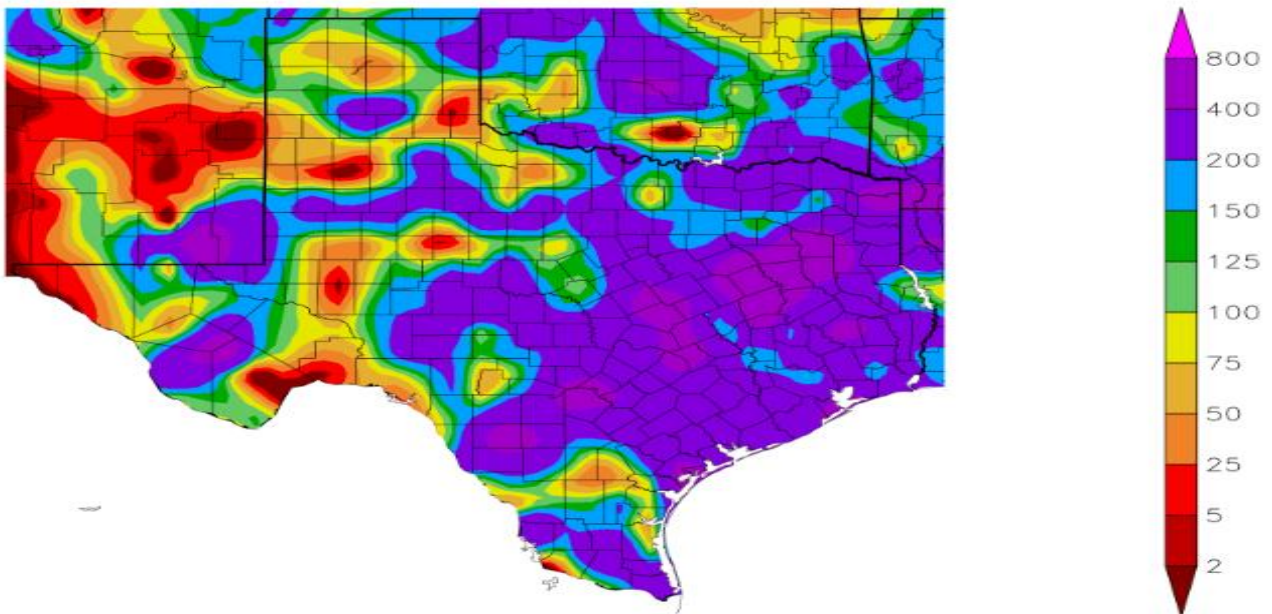
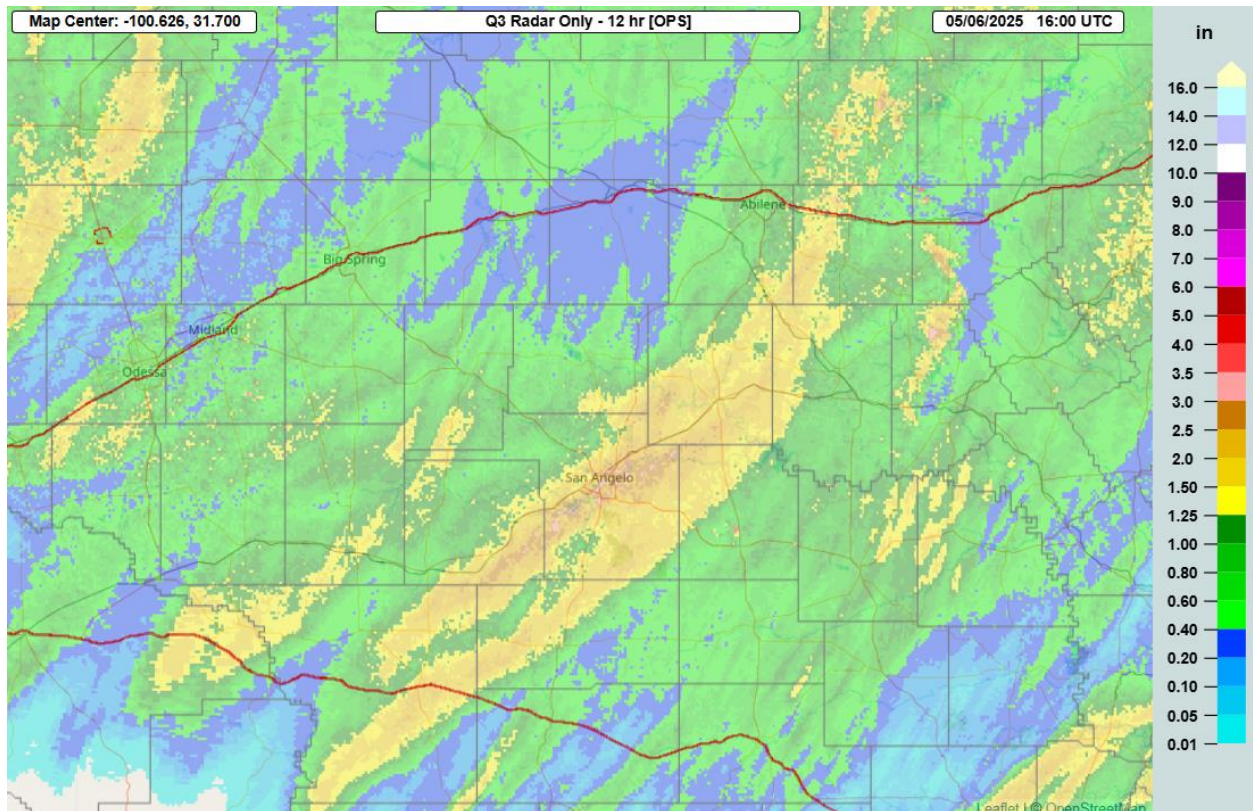


Figure 2: Percentage of Normal Precipitation for May.

## May 2025 Weather Highlights

Sporadic severe storms occurred May 1-2 in southern parts of the area. The largest reported hail was baseball size 26 miles south-southwest of Ozona, and in Kimble County 6 miles south-southwest of London.

A large complex of thunderstorms moved east across west-central Texas May 6, between Midnight and 10 AM. A few of the storms produced quarter size hail in Tom Green and Schleicher Counties. Heavy rainfall also accompanied these storms. The map below shows rainfall for this event.



On this map, the areas shaded in yellow and brown denote rainfall amounts between 1.5 and 3 inches. At the San Angelo Regional Airport, a new daily rainfall record was set (3.19 inches) on May 6. A large part of west-central Texas received rainfall amounts between 0.5 inches and 1.5 inches.

By the middle of the month, temperatures trended hotter, and a number of locations recording their first 100 degree temperatures of the year.

During the evening hours of May 18, strong to severe storms occurred in the Big Country, from the Abilene and Cyde areas northward. Other isolated strong to severe storms affected the northern Concho Valley to Coleman and Brown Counties. Two tornadoes occurred in the Big Country. In Callahan County, considerable tree damage was reported from a tornado a few miles south of Clyde, near Farm to Market Rd 604. In Shackelford County, downed power lines and poles, along with tree damage, were reported from a tornado 6 miles northeast of Albany near County Road 109.

In all, a [total of 7 severe weather and 1 flooding report](#) were received for this event.



The weather pattern was unsettled late in the month with several episodes of severe weather.

Numerous thunderstorms tracked southeast across the area, during the evening and nighttime hours of May 22. This included a complex of thunderstorms which moved south-southeast across the Heartland (east-central counties) and Northwest Hill Country (southeastern counties). Numerous Mesonet sites from Albany south to Coleman, Shields and Doole recorded wind gusts 58-65 mph. At Woodson (southern Throckmorton County), winds were estimated to be 70-80 mph. An AWOS site at the Brownwood Airport recorded a 59 mph wind gust. In all, a [total of 16 severe weather reports were received for this event.](#)

A [severe weather event](#) occurred in the Big Country May 25, between 6 PM and Midnight. At Stamford, wind damage was reported from 75-80 mph winds. Two brief tornado touchdowns were reported 5 miles northwest of Stamford. Large hail up to golf ball size occurred with storms 4 miles northwest, and 7 miles north, of Stamford.

Severe weather occurred May 26, when multiple clusters of thunderstorms which moved southeast across central, southeastern and southern parts of west-central Texas. The severe weather occurred during the afternoon and evening hours. With the most potent storm (Menard County, approximately 2 miles west of Menard), giant hail (measured at approximately 5.87 inches in diameter) was reported, along with a brief tornado. According to records for the forecast area of the National Weather Service in San Angelo, this was the largest hail size on record. A Mesonet site at Menard recorded a 73 mph wind gust. Flash flooding of streets was reported in Menard, along with some flooding of yards of residences. Flooding was also reported 1 mile northeast of Hext (Menard County). Very large hail was reported in the vicinity of Christoval (baseball size up to 3.5 inches in diameter). Also in Tom Green County, golf ball size hail was reported 5 miles south of Grape Creek. Thunderstorm winds snapped multiple power poles 9 miles east-southeast of Christoval.

During the overnight hours of May 27-28, a complex of thunderstorms moved east-northeast across central and southern parts of west-central Texas. A 70 mph thunderstorm wind gust occurred 2 miles west of Christoval, and quarter size hail covered the ground 7 miles west-northwest of Sonora at a rest stop along Interstate 10.

A complex of thunderstorms moved south and southeast across much of west-central Texas (mainly along and south of I-20) from the evening of May 29 into the post-Midnight hours of May 30. A tornado was reported 2 miles west of Glen Cover (Coleman County). Golf ball size hail was reported 9 miles southwest of View (Taylor County) and 1 mile west-southwest of Winters (Runnels County). In Sterling County, winds were estimated at 70 mph 4 miles south of Sterling City, and a 59 mph gust was measured by a Mesonet site 4 miles west-southwest of Sterling City. In Tom Green County, a 59 mph wind gust was recorded at the San Angelo Airport. Heavy rainfall in a short period of time caused flash flooding of streets on the northwest side of San Angelo. In all, [a total of 8 severe weather reports and 1 flash flood report](#) were received for this event.