

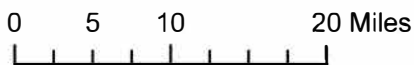
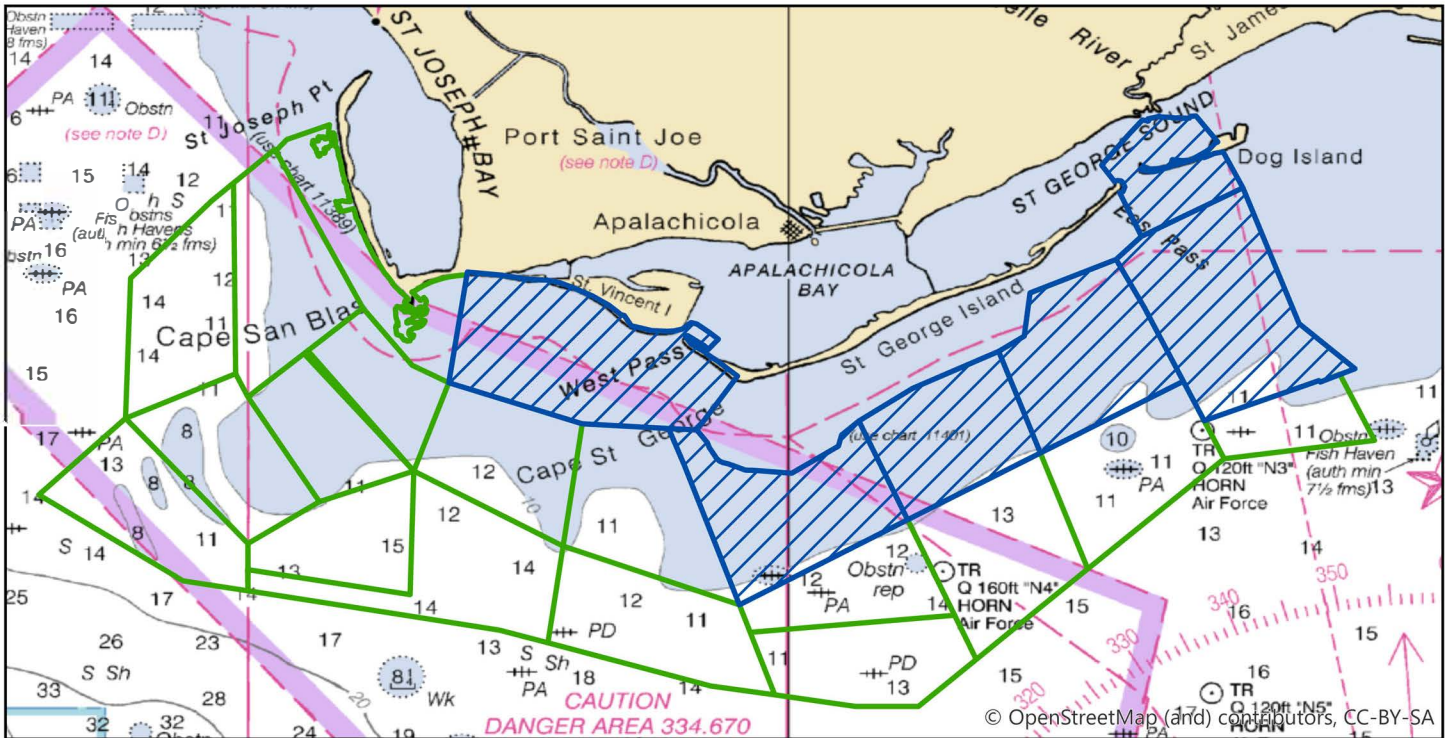


Updating the Nautical Charts of Apalachicola, Florida Announcement of The National Oceanic and Atmospheric Administration's Hydrographic Survey Operation, 2020

Only 2% of the seafloor of the Big Bend is mapped to modern standards. As part of a multi-year project, NOAA Contractor Fugro USA Marine Inc. is underway on a third year in acquiring hydrographic data that will be used to update navigational products. The 2020 project is estimated to cover 430 square nautical miles on the western extent of the Florida Coastal Mapping Program (FCMaP) Big Bend Mapping project priority area.

The vessels performing these surveys are equipped to collect multibeam and side scan sonar data. The ship and USV will operate up to 24 hours per day and may be towing sensors, which will restrict its ability to maneuver. This data will improve the understanding of the bathymetry, geomorphology, biodiversity and distribution of habitats. It will provide key base data to support fisheries, coastal modeling, resource management, and navigational charts improving safety of navigation for the region.

The map below displays the final regions planned to be surveyed over this three years To see the survey progress go to the hydrographic survey vessels link at <https://nauticalcharts.noaa.gov/data/current-year-survey-plans.html>



Survey Plans

- OPR_J359_KR_20 Survey
- Completed Survey

Questions or concerns may be addressed to the following. Please reference the survey number OPR-J359-KR-20.

- NOAA's Central Gulf Coast Navigation Manager
Tim.Osborn@noaa.gov
- NOAA Project Manager
Starla.Robinson@noaa.gov