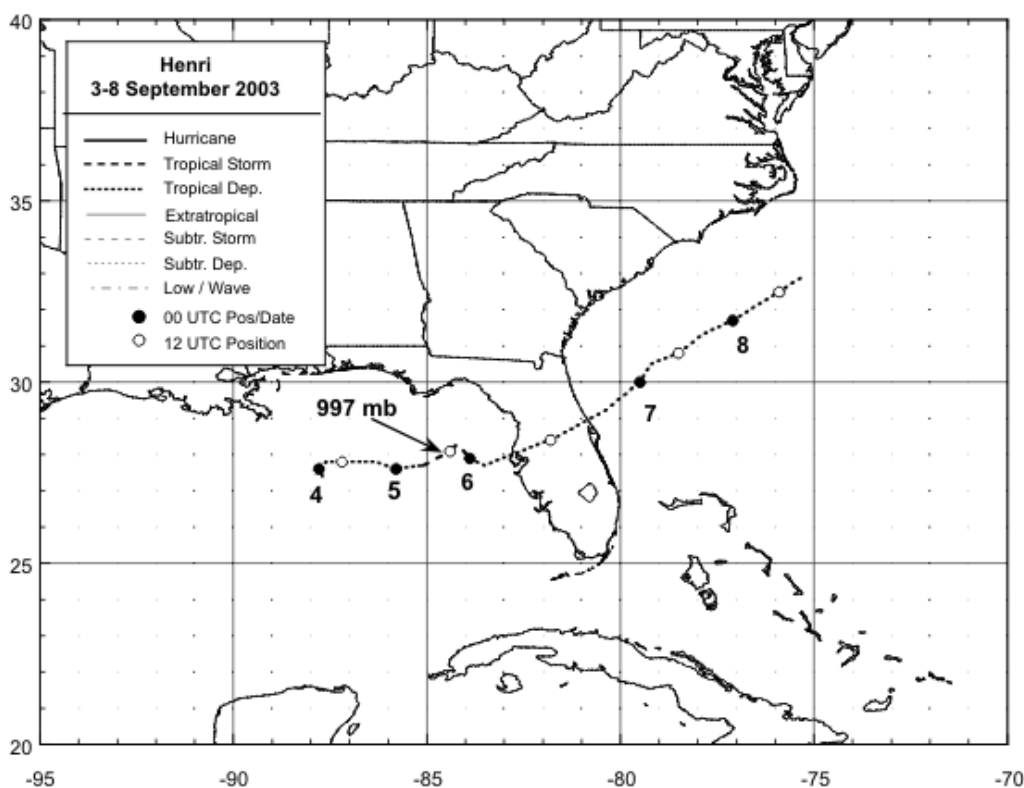


# Tropical Storm Henri Dumps Torrential Rains

## Fact Sheet

Event date: September 3 – 8, 2003  
 Peak winds: 60 mph  
 Landfall winds: 35 mph

Minimum pressure: 997 mb  
 Landfall pressure: 1006 mb in Clearwater, FL  
 Max rainfall: 9.09" in Hialeah, FL



**Figure 1.** National Hurricane Center best track for Tropical Storm Henri, 2003.

**Summary of event:**

Short lived Tropical Storm Henri dumped torrential rains across the Tampa Bay area and southward on September 5 – 6, 2003. Henri remained poorly organized through landfall, and created mostly freshwater flooding in southwest Florida, especially in Sarasota and Lee Counties, and a small portion of Hernando and Pasco Counties. Winds were generally around 20 knots in the Tampa Bay area, with gusts to around 25 knots. The minimum sea level pressure was recorded in Clearwater and was 1004.4 mb. Charlotte County received 5 – 10 inches of rain, Sarasota County received 3 – 9 inches, and Lee County received 2 – 9 inches. Charlotte County sustained the most damage from flooding rains as wakes from vehicles driving through flooded streets pushed water into homes in Charlotte Harbor.

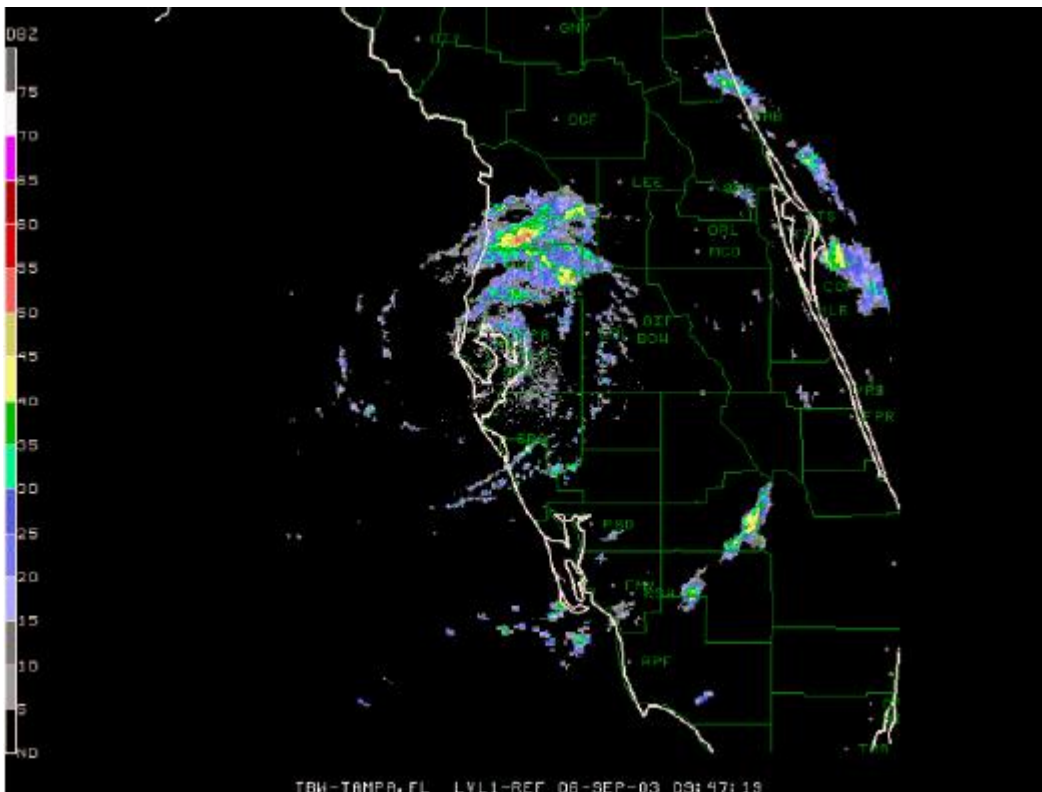
# NOAA AND THE PRESERVE AMERICA



*Initiative*



**Figure 2.** Flooding rains in Charlotte County from Tropical Storm Henri.



**Figure 3.** Tropical Storm Henri centered over Pinellas County in west central Florida.

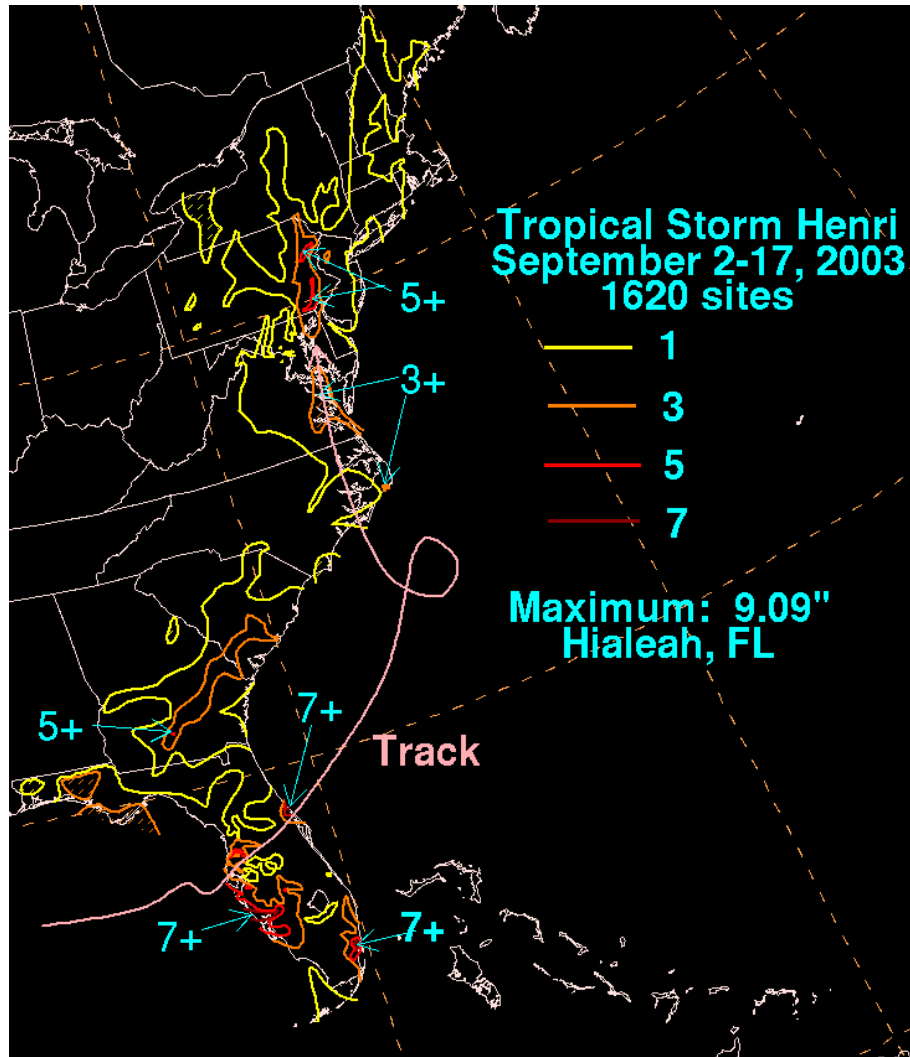


Figure 4. Maximum rainfall amounts from Tropical Storm Henri, reaching 9.09" in Hialeah, FL.

**Links for more information:**

<http://www.srh.noaa.gov/images/tbw/2003/TropicalStormHenri.pdf>

**Acknowledgements:** The National Weather Service, Tampa Bay Area.