

# April 2026 Climate Highlights for Central & Northern New Mexico



© Becca Furnish on X  
Shelf Cloud, Saturday afternoon, April 11, 2026



## April Temperatures

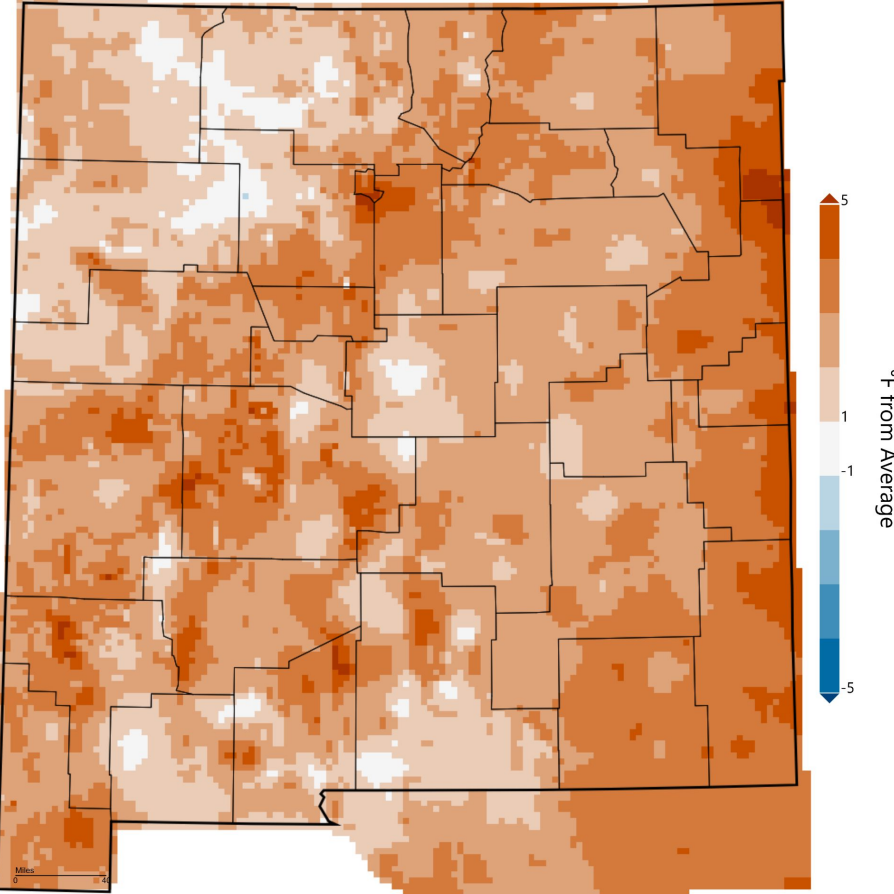
Location	Observed Avg. Temp (°F)	Normal Avg. Temp (°F)	Departure (°F)	Rank <small>Years in Period of Record</small> (1 is hottest)
Albuquerque (KABQ)	60.1°	56.8°	+3.3°	8 <sup>136</sup>
Roswell (KROW)	65.1°	63.2°	+1.9°	10 <sup>135</sup>
Clayton (KCAO)	56.7°	52.0°	+4.7°	8 <sup>131</sup>
Raton (KRTN)	51.2°	48.1°	+3.1°	5 <sup>81</sup>
Las Vegas (KLVS)	50.9°	47.8°	+3.1°	14 <sup>87</sup>
Santa Fe (KSAF)	52.7°	50.2°	+2.5°	8 <sup>86</sup>
Tucumcari (KTCC)	62.3°	57.7°	+4.6°	3 <sup>79</sup>
Farmington (KFMN)	53.8°	51.3°	+2.5°	10 <sup>86</sup>
Gallup (KGUP)	49.1°	47.0°	+2.1°	9 <sup>54</sup>

Data is considered preliminary until certified by NCEI



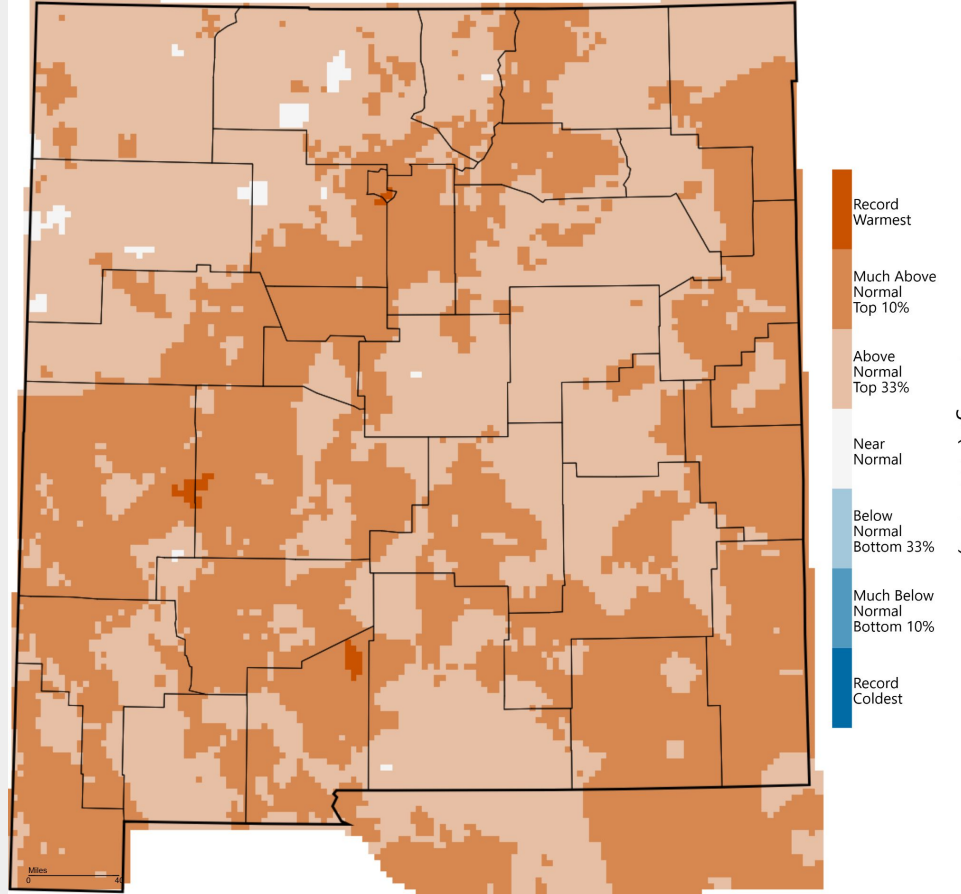
## April Temperatures

**New Mexico - Mean Temperature**  
April 2026, Departure from 1991-2020 Average



WestWide Drought Tracker, WRCC, Climate Engine, Data Source: PRISM Prelim, created 05 May 2026

**New Mexico - Mean Temperature**  
April 2026, Percentile



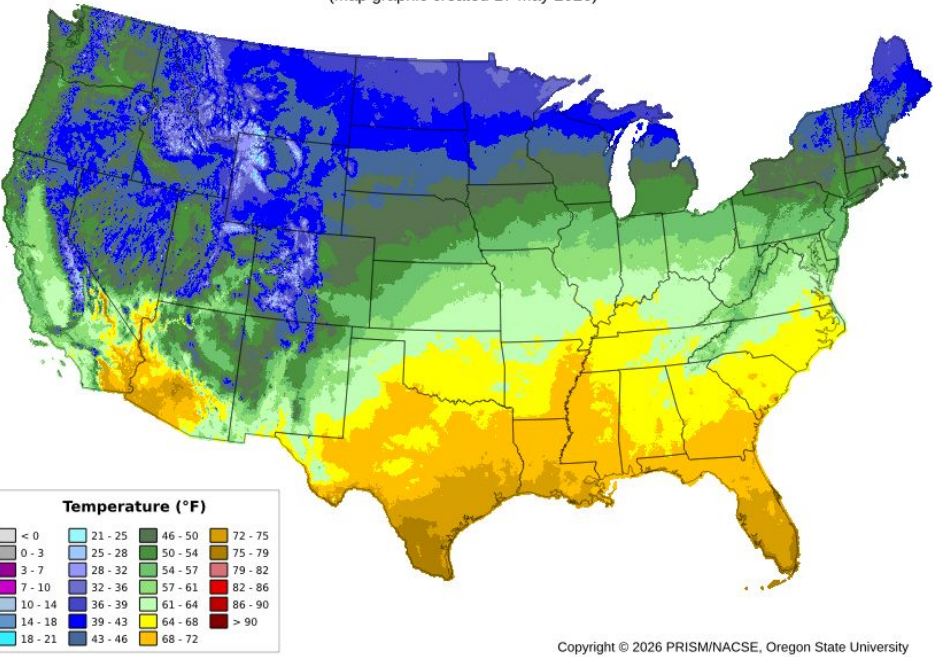
WestWide Drought Tracker, WRCC, Climate Engine, Data Source: PRISM Prelim, created 05 May 2026

Rankings (1895-2026)

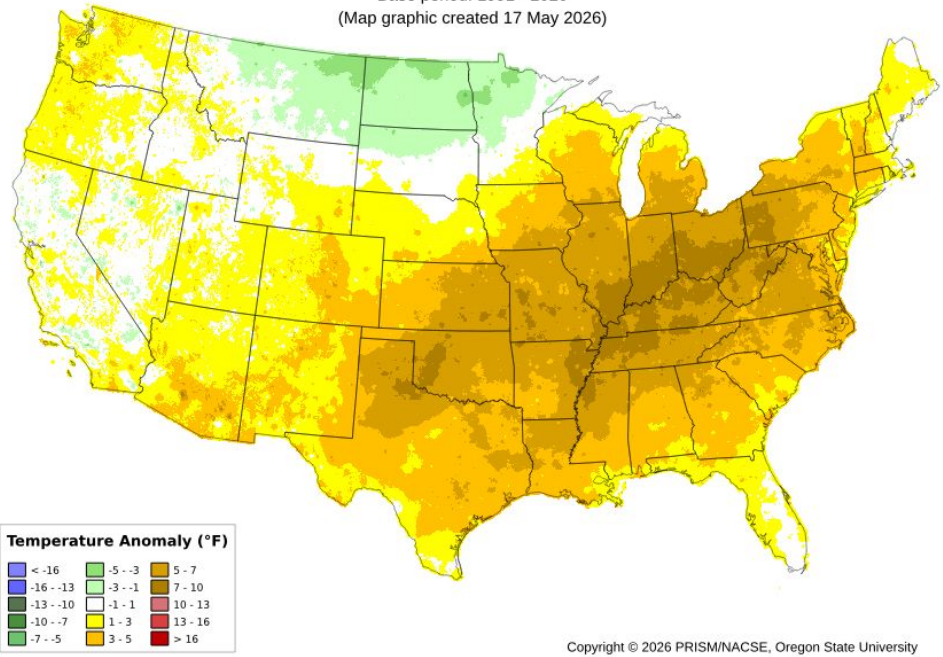


## April Temperatures

Average Daily Mean Temperature: Apr 2026  
 Period ending 7 AM EST 30 Apr 2026  
 (Map graphic created 17 May 2026)



Daily Mean Temperature Anomaly: Apr 2026  
 Period ending 7 AM EST 30 Apr 2026  
 Base period: 1991 - 2020  
 (Map graphic created 17 May 2026)



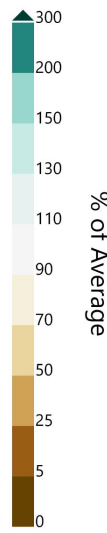
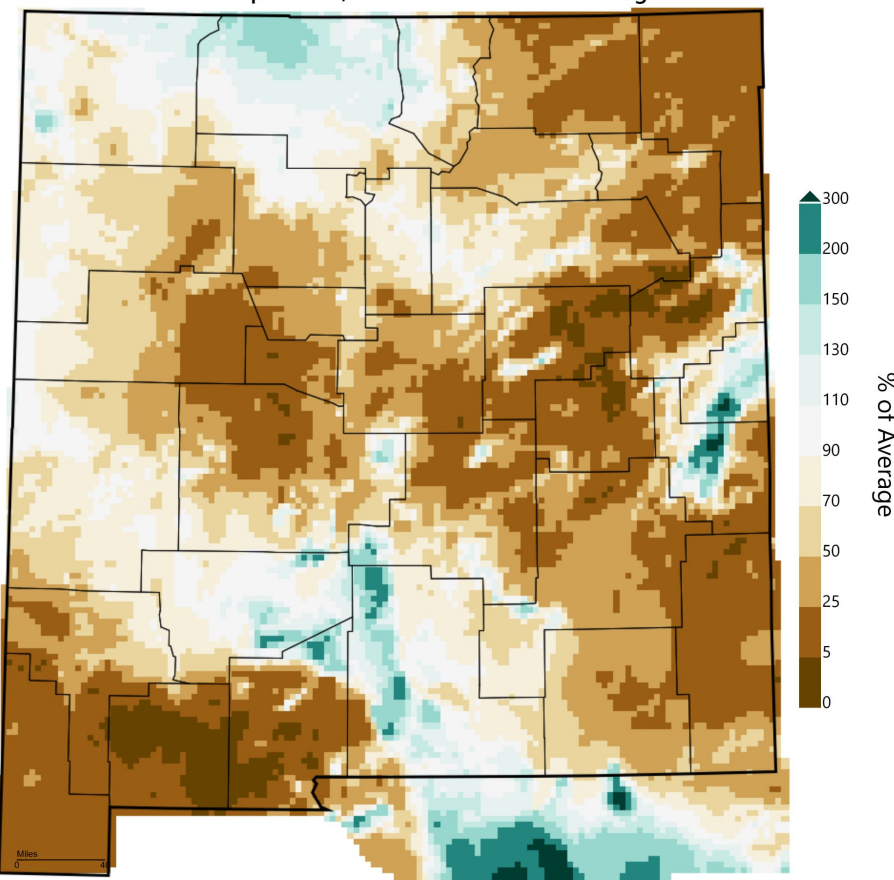
## April Precipitation

Location	Observed Precip (in)	Normal Precip (in)	Departure (in)	Rank <small>Years in Period of Record</small> (1 is wettest)
Albuquerque (KABQ)	0.17"	0.51"	-0.34"	89 <sup>136</sup>
Roswell (KROW)	0.19"	0.57"	-0.38"	79 <sup>135</sup> T
Clayton (KCAO)	0.17"	1.12"	-0.95"	99 <sup>131</sup>
Raton (KRTN)	0.94"	1.03"	-0.09"	16 <sup>86</sup>
Las Vegas (KLVS)	0.22"	0.68"	-0.46"	58 <sup>87</sup>
Santa Fe (KSAF)	0.36"	0.53"	-0.17"	25 <sup>86</sup> T
Tucumcari (KTCC)*	0.08"	0.90"	-0.82"	53 <sup>79</sup>
Farmington (KFMN)	0.47"	0.56"	-0.09"	25 <sup>86</sup>
Gallup (KGUP)	0.76"	0.46"	+0.30"	10 <sup>54</sup>

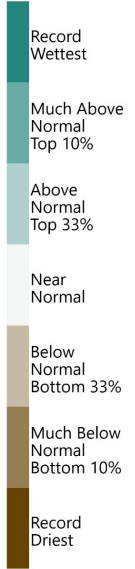
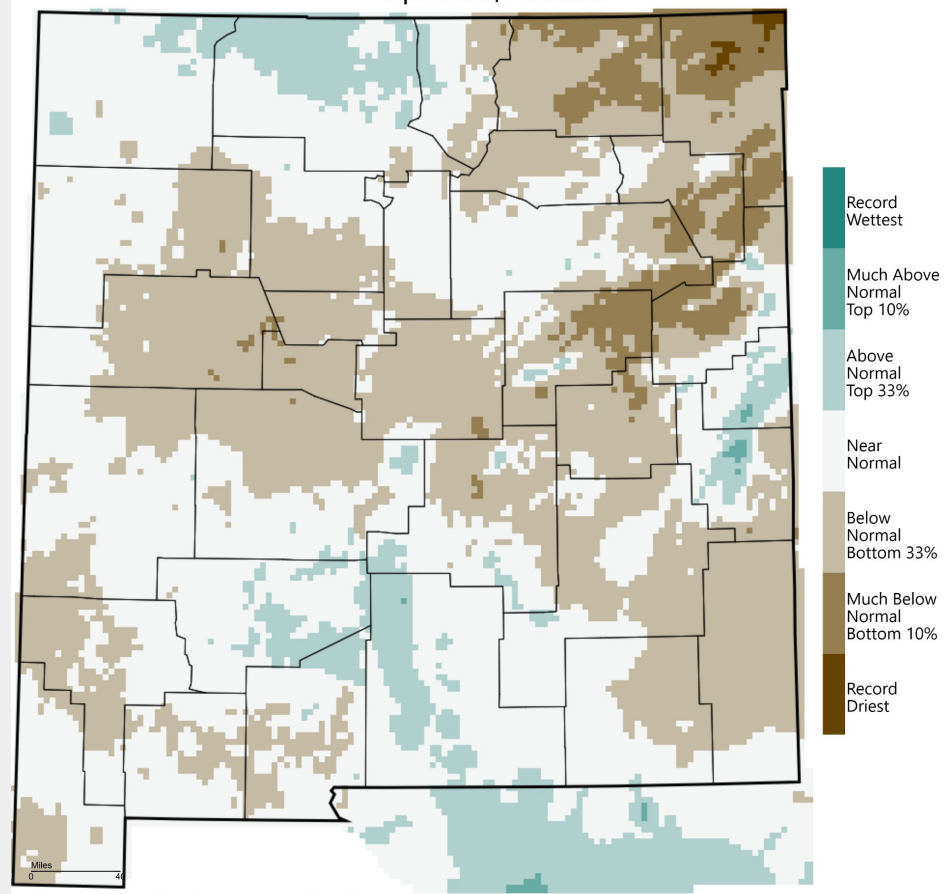
\*contains missing data  
Data is considered preliminary until certified by NCEI

## April Precipitation

**New Mexico - Precipitation**  
April 2026, Percent of 1991-2020 Average



**New Mexico - Precipitation**  
April 2026, Percentile



Rankings (1895-2026)

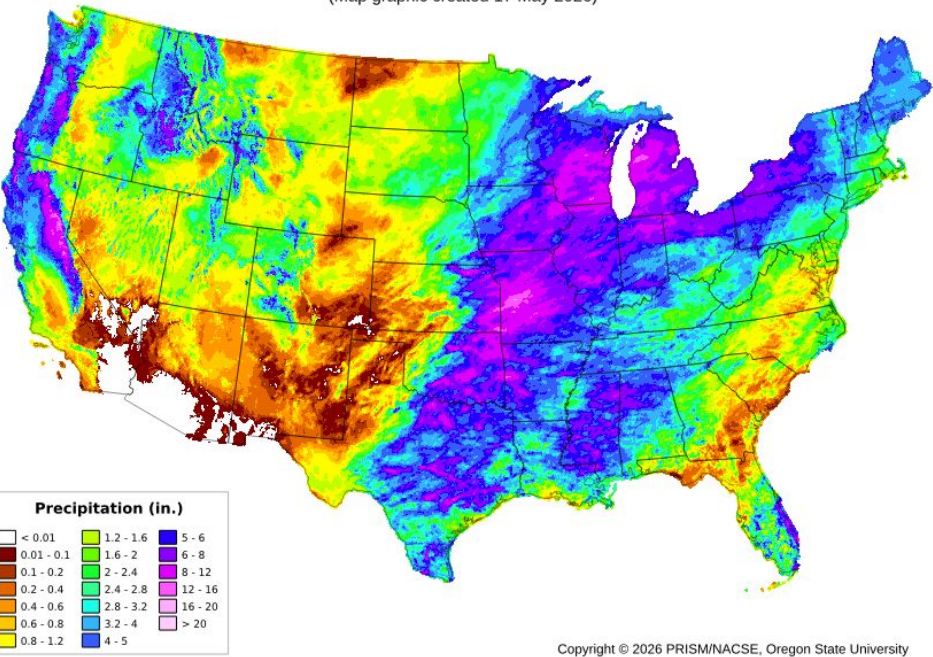
WestWide Drought Tracker, WRCC, Climate Engine, Data Source: PRISM Prelim, created 05 May 2026

WestWide Drought Tracker, WRCC, Climate Engine, Data Source: PRISM Prelim, created 05 May 2026

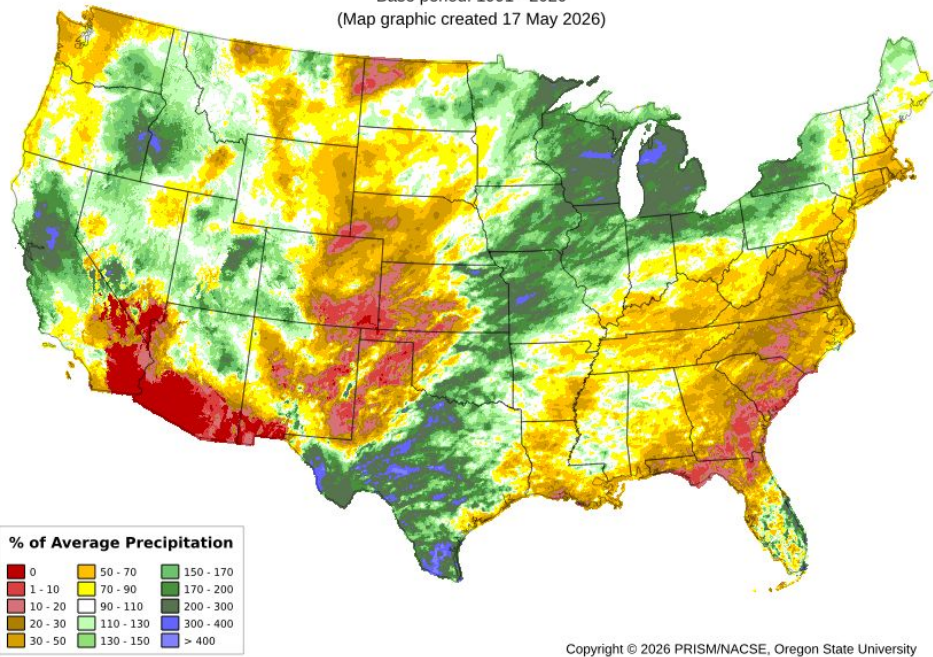


## April Precipitation

**Total Precipitation: Apr 2026**  
Period ending 7 AM EST 30 Apr 2026  
(Map graphic created 17 May 2026)



**Total Precipitation Anomaly: Apr 2026**  
Period ending 7 AM EST 30 Apr 2026  
Base period: 1991 - 2020  
(Map graphic created 17 May 2026)

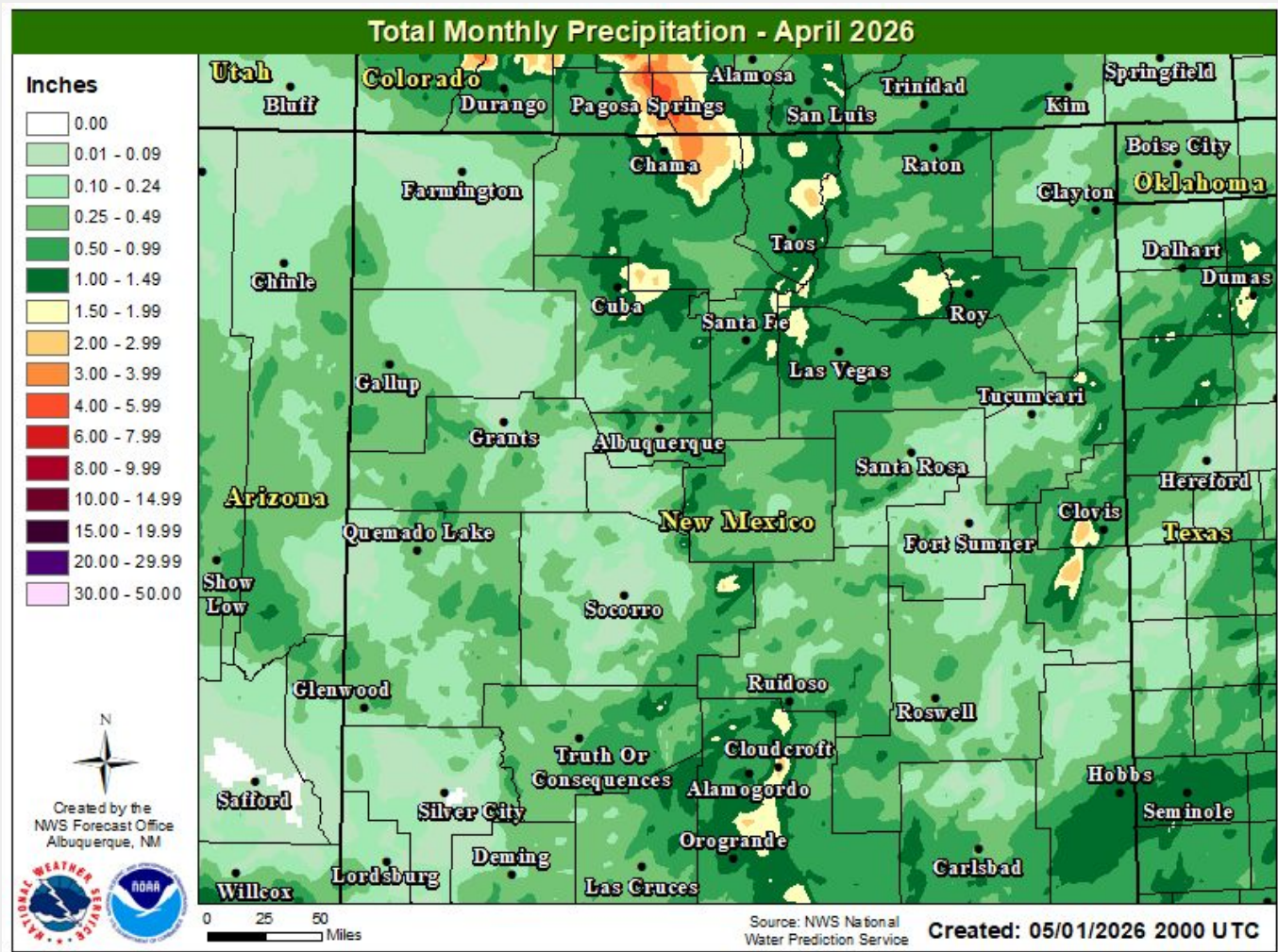


## Highest CoCoRaHS Reports

Station Number	Total Precipitation (Inches)
Alto 7.4 W	2.65"
Taos 1.6 SE	2.03"
Chama 1 N	1.95"
Chama 12.3 SSE	1.94"
Sandia Park 4.2 ENE	1.75"
Clovis 3.3 SW	1.61"
Gallina 2W	1.39"
Alcalde 19N	1.36"
Santa Fe 3.2 W	1.31"

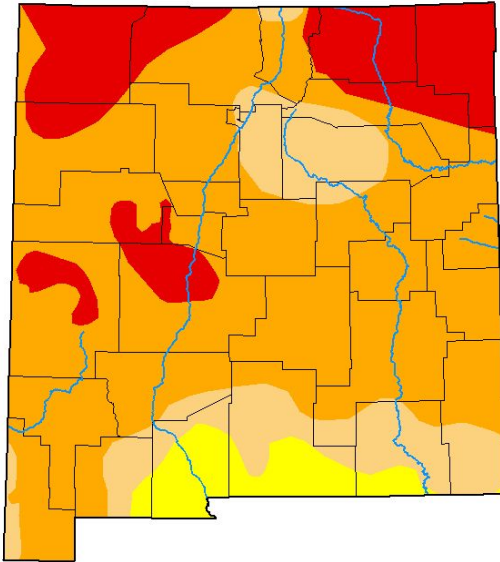


## Monthly Precipitation



## Current Drought Conditions & Four Week Change

### U.S. Drought Monitor New Mexico



### May 5, 2026 (Released Thursday, May 7, 2026) Valid 8 a.m. EDT

Drought Conditions (Percent Area)

	None	D0-D4	D1-D4	D2-D4	D3-D4	D4
<b>Current</b>	0.00	100.00	94.42	79.05	17.57	0.00
<b>Last Week</b> 04-28-2026	0.00	100.00	96.01	80.60	13.69	0.00
<b>3 Months Ago</b> 02-03-2026	1.01	98.99	71.50	36.57	1.99	0.00
<b>Start of Calendar Year</b> 01-06-2026	0.01	99.99	71.71	51.89	2.59	0.00
<b>Start of Water Year</b> 09-30-2025	19.91	80.09	68.67	47.53	14.45	2.41
<b>One Year Ago</b> 05-06-2025	1.27	98.73	88.37	75.51	49.34	4.23

- Intensity:**
- None
  - D0 Abnormally Dry
  - D1 Moderate Drought
  - D2 Severe Drought
  - D3 Extreme Drought
  - D4 Exceptional Drought

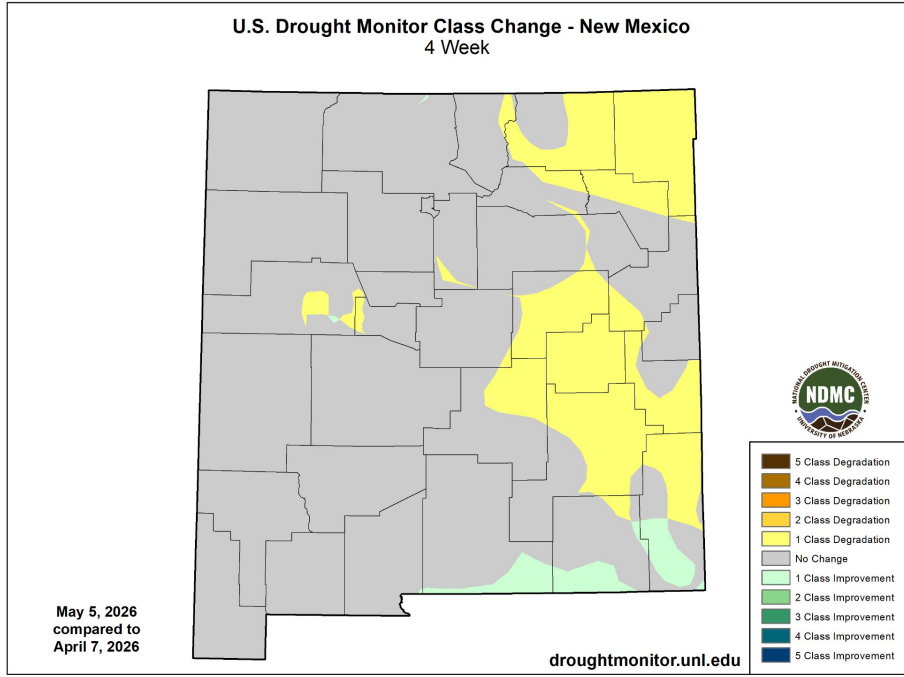
The Drought Monitor focuses on broad-scale conditions. Local conditions may vary. For more information on the Drought Monitor, go to <https://droughtmonitor.unl.edu/about.aspx>

**Author:**  
Adam Allgood  
NOAA/NWS/NCEP/CPC



[droughtmonitor.unl.edu](https://droughtmonitor.unl.edu)

### U.S. Drought Monitor Class Change - New Mexico 4 Week



May 5, 2026  
compared to  
April 7, 2026

[droughtmonitor.unl.edu](https://droughtmonitor.unl.edu)

- 5 Class Degradation
- 4 Class Degradation
- 3 Class Degradation
- 2 Class Degradation
- 1 Class Degradation
- No Change
- 1 Class Improvement
- 2 Class Improvement
- 3 Class Improvement
- 4 Class Improvement
- 5 Class Improvement



## Weather Event of the Month: Multi-Hazard Spring Storm (April 26)

### Quick Summary:

April is no stranger to storm systems that bring a variety of weather hazards to the state. Late in the month, there was a Pacific storm system that brought strong to damaging wind gusts and very high fire danger to eastern NM, while northern and western NM had rain and high mountain snow. Elevated blowing dust was also picked up across southeast NM.

### Atmospheric Setup:

A large longwave trough was in place over the Rockies, with a zonal jet streak at the base of the trough over the desert southwest. This is a classic fire weather pattern for New Mexico and it is quite common during the Spring months.

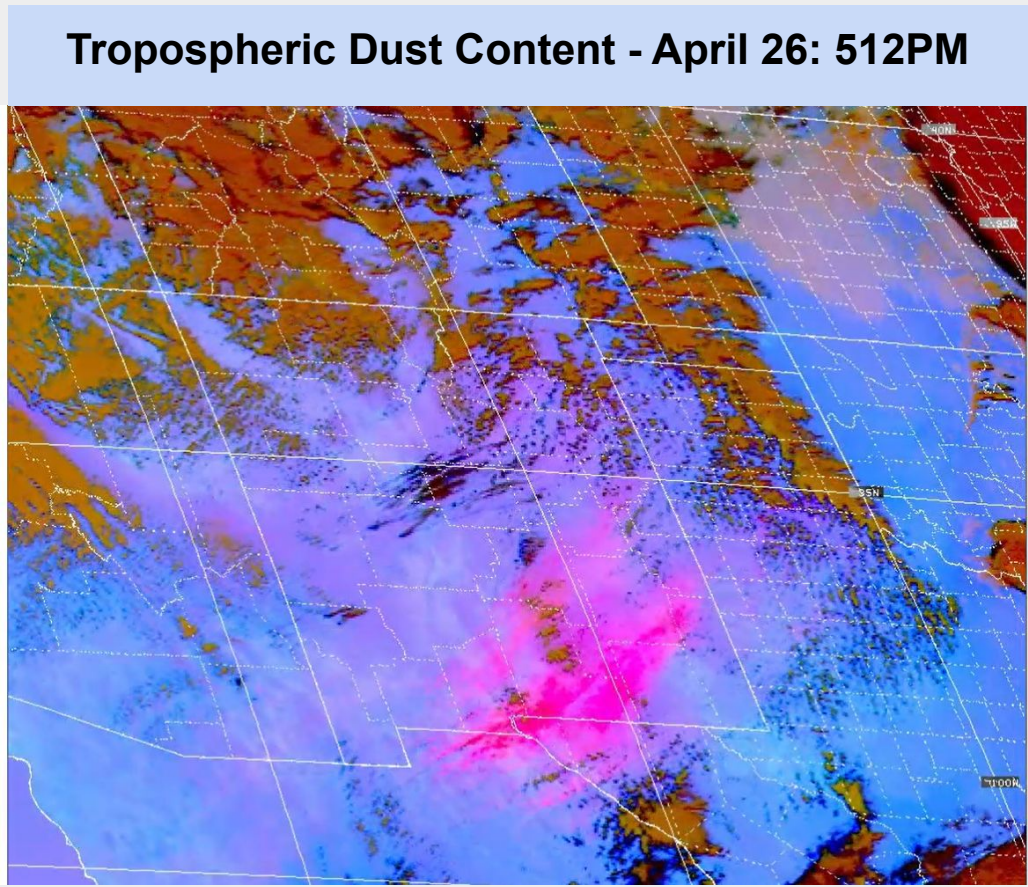
### Hazards:

- **Wind/Dust:** Gusts as high as 69 mph in central and eastern NM; Minor visibility reductions from dust in southeast NM
- **Fire Danger:** Widespread critical to locally extreme fire weather conditions with RFTI (Red Flag Threat Index) values as high as 7 in the East Central Plains. The Hummingbird fire that was started several days earlier rapidly grew on this day.
- **Snow/Rain:** Rain amounts up to 0.25" and a few inches of snow in the high mountains of northern New Mexico.



## Weather Event of the Month: Multi-Hazard Spring Storm

April 26 - Highest Wind Reports	
Location	Wind Gust (mph)
Clines Corners	69
Dunken 2 NE	67
Pole 616 (WSMR)	64
Sierra Blanca Airport	63
Las Vegas Airport	63
Albuquerque Sunport	62
Nogal 5 NW	62
I-40 @ US 285	62
Tucumcari Airport	62
Clovis	61



Dust indicated by areas in hot pink

## Additional Resources

PRISM Charts: <https://prism.oregonstate.edu/>

CPC Outlooks: <https://www.cpc.ncep.noaa.gov/>

NCEI Climatological Rankings:  
<https://www.ncei.noaa.gov/access/monitoring/climate-at-a-glance/statewide/time-series>

