

February 2026 Climate Highlights for Central & Northern New Mexico



Photo Courtesy Rob Augugliaro. (Feb. 8, 2026)



February 2026 Monthly Highlights

February Temperatures

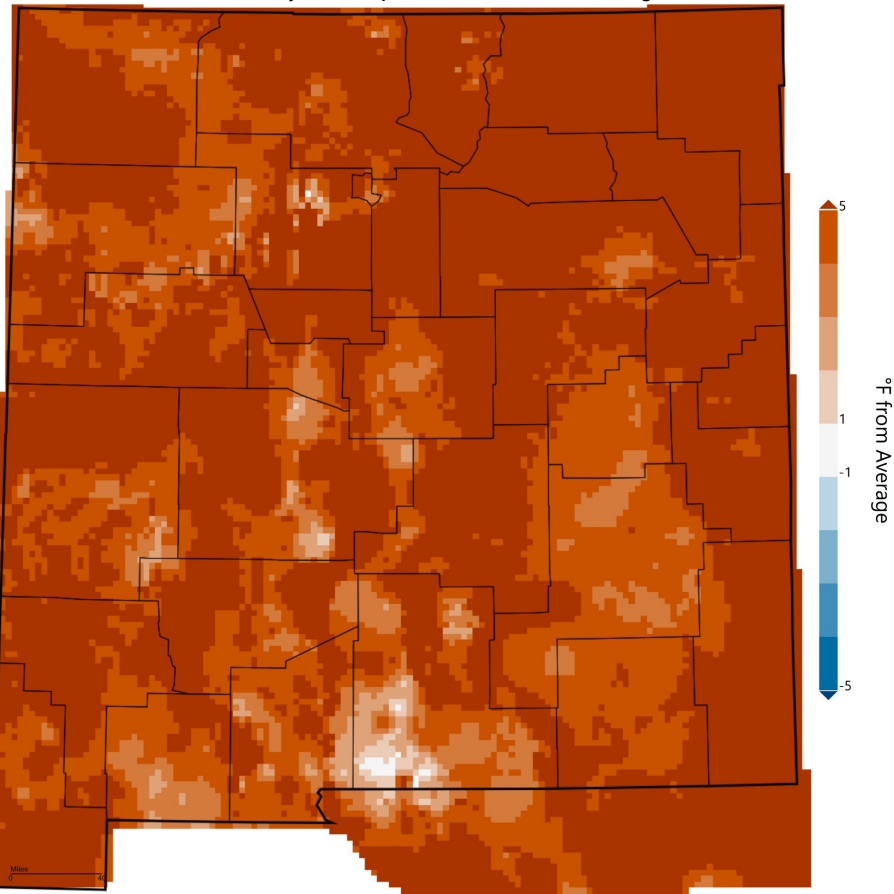
Location	Observed Avg. Temp (°F)	Normal Avg. Temp (°F)	Departure (°F)	Rank <small>Years in POR</small> <small>(1 is hottest)</small>
Albuquerque (KABQ)	49.4°	41.9°	+7.5°	1 ¹³⁶
Roswell (KROW)	52.5°	47.8°	+4.7°	1 ¹³⁵
Clayton (KCAO)	47.8°	37.5°	+10.3°	1 ¹³¹
Raton (KRTN)	41.3°	33.7°	+7.6°	1 ⁸¹
Las Vegas (KLVS)	43.3°	35.4°	+7.9°	1 ⁸⁷
Santa Fe (KSAF)	42.5°	36.3°	+6.2°	2 ⁸⁶
Tucumcari (KTCC)	49.7°	42.5°	+7.2°	2 ⁷⁹
Farmington (KFMN)	41.8°	36.5°	+5.3°	1 ⁸⁶
Gallup (KGUP)	38.1°	34.4°	+3.7°	5 ⁵⁴

Data is considered preliminary until certified by NCEI



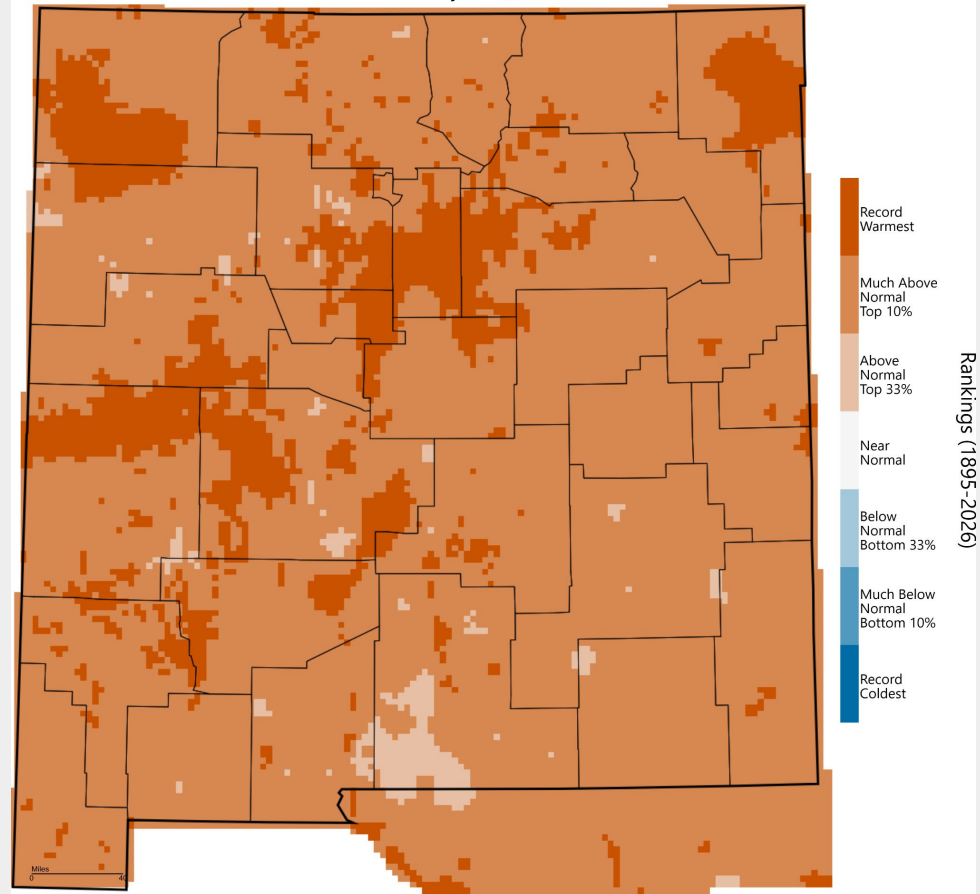
February Temperatures

New Mexico - Mean Temperature
February 2026, Departure from 1991-2020 Average



WestWide Drought Tracker, WRCC, Climate Engine, Data Source: PRISM Prelim, created 05 Mar 2026

New Mexico - Mean Temperature
February 2026, Percentile



WestWide Drought Tracker, WRCC, Climate Engine, Data Source: PRISM Prelim, created 05 Mar 2026



February Precipitation

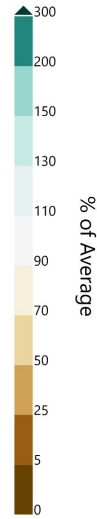
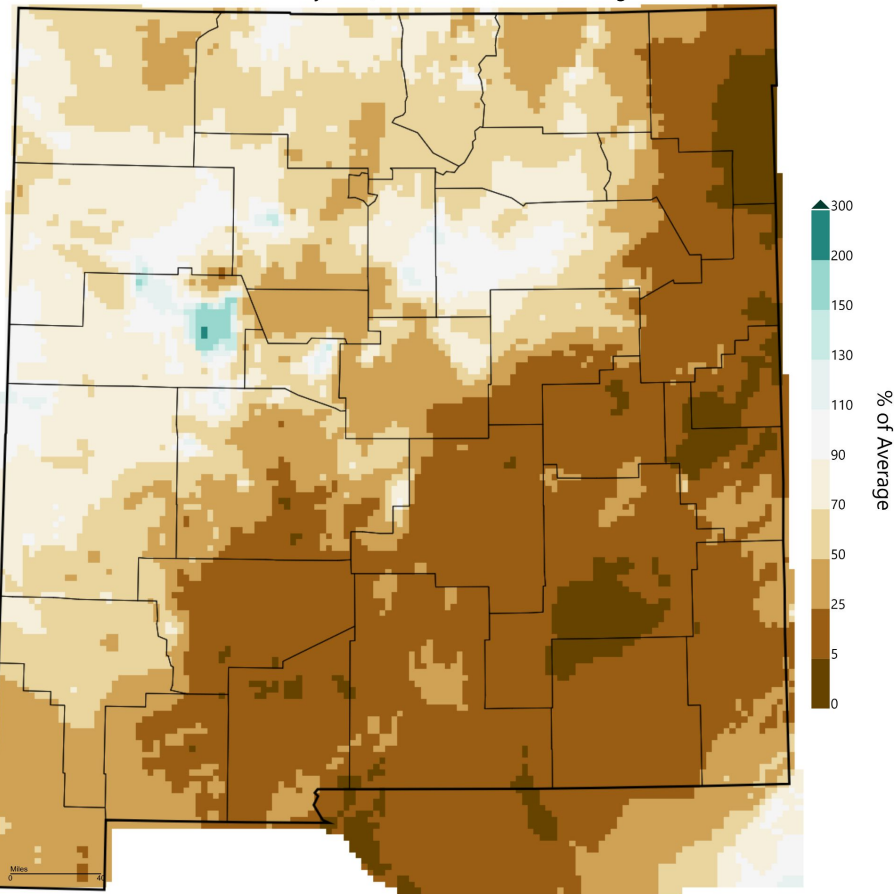
Location	Observed Precip (in)	Normal Precip (in)	Departure (in)	Rank ^{Years in POR} (1 is wettest)
Albuquerque (KABQ)	0.2"	0.43"	-0.23"	66 ¹³⁶
Roswell (KROW)	T	0.35"	-0.35"	84 ¹³⁵
Clayton (KCAO)	T	0.30"	-0.3"	81 ¹³¹
Raton (KRTN)	0.36"	0.32"	0.04"	10 ⁸⁶
Las Vegas (KLVS)	0.41"	0.32"	0.09"	23 ⁸⁷
Santa Fe (KSAF)	0.30"	0.35"	-0.05"	16 ⁸⁶
Tucumcari (KTCC)	0.01"	0.36"	-0.35"	41 ⁷⁹
Farmington (KFMN)	0.48"	0.65"	-0.17"	20 ⁸⁶
Gallup (KGUP)	0.48"	0.71"	-0.23"	22 ⁵⁴

Data is considered preliminary until certified by NCEI

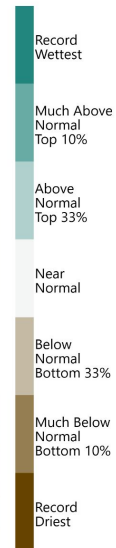
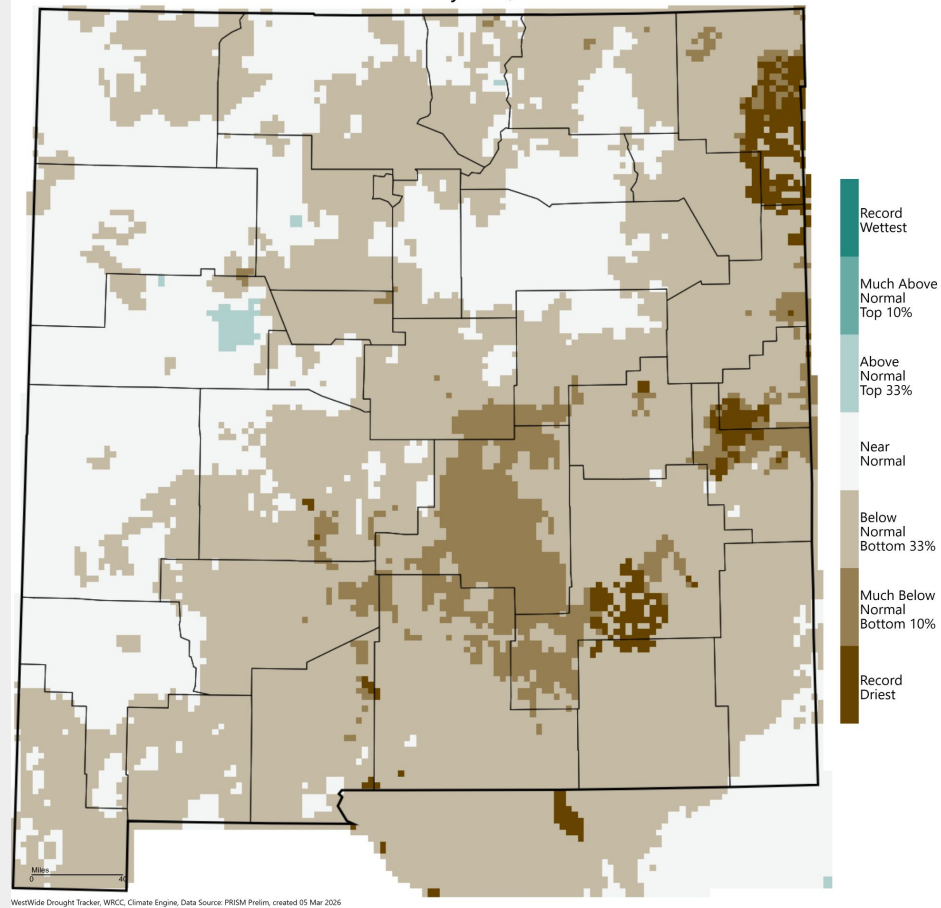


February Precipitation

New Mexico - Precipitation
February 2026, Percent of 1991-2020 Average



New Mexico - Precipitation
February 2026, Percentile



Rankings (1895-2026)

WestWide Drought Tracker, WRCC, Climate Engine, Data Source: PRISM Prelim, created 05 Mar 2026

WestWide Drought Tracker, WRCC, Climate Engine, Data Source: PRISM Prelim, created 05 Mar 2026

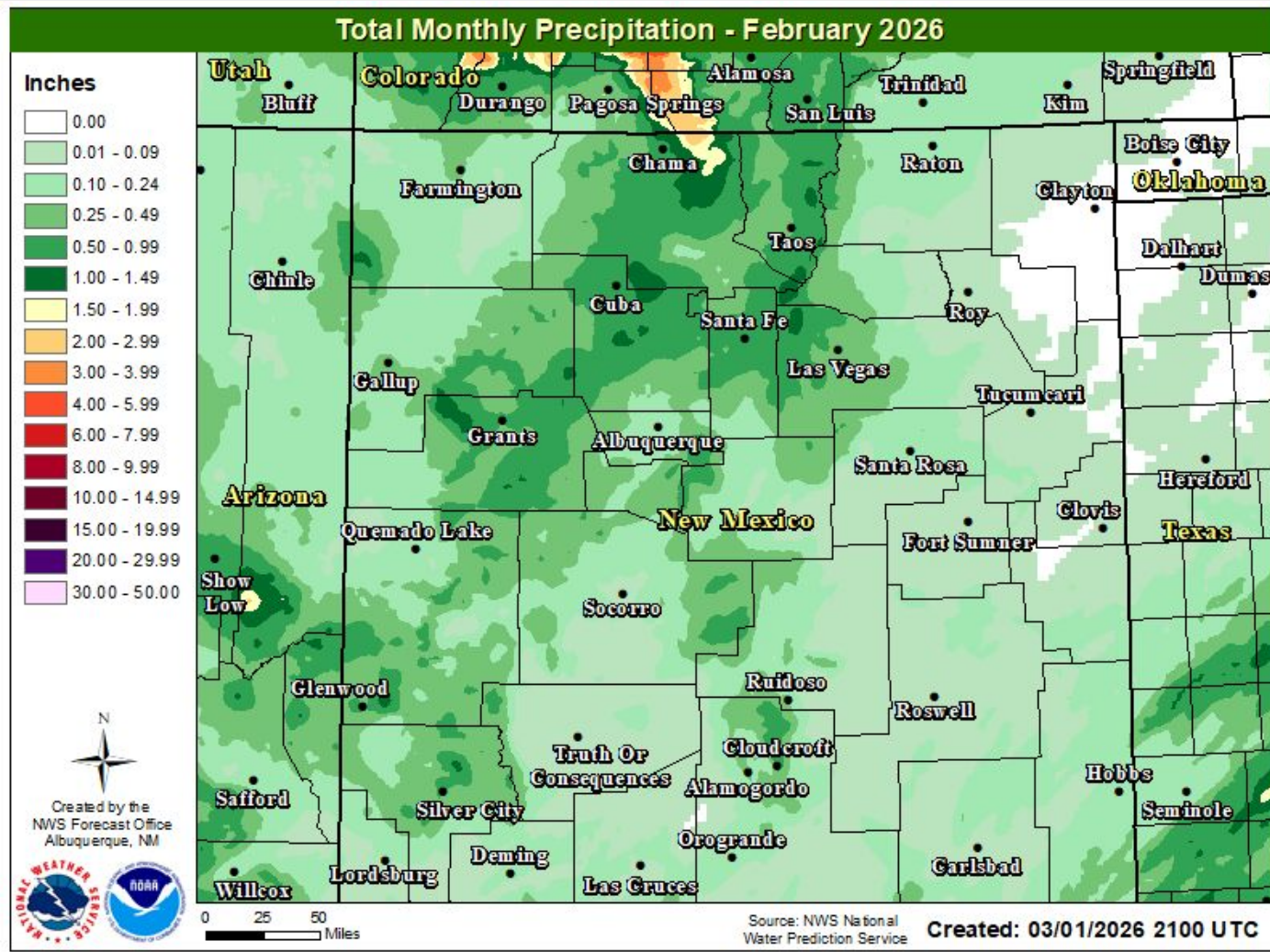


Highest CoCoRaHS Reports

Station Name	Total Precipitation (Inches)
Chama 1 N	1.56"
Chama 12.3 SSE	0.99"
Gallina 2W	0.85"
Gallup 0.4 NNE	0.84"
Gallup 0.7 ENE	0.84"
Rowe 2.7 NNW	0.84"
Glorieta 2.4 E	0.73"
Glenwood 8.8 NNW	0.72"
Santa Fe 17.8 SSE	0.72"

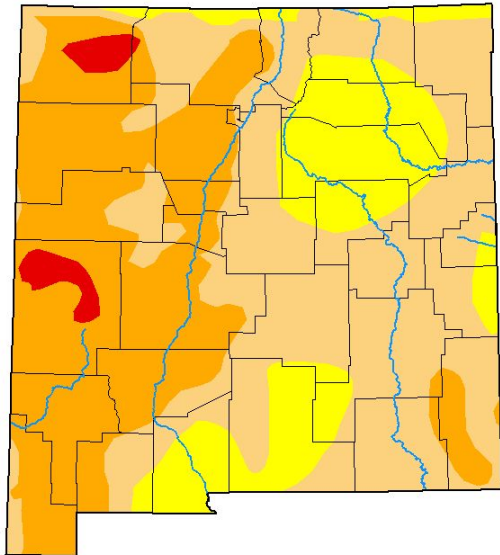
Station Name	Total Precipitation (Inches)
Zuni Pueblo 0.5 S	0.70"
Tijeras 8.2 SSE	0.67"
Farmington 3.0 NE	0.67"
Santa Fe 2.3 SE	0.67"
Ilfeld 0.7 NE	0.63"
Tijeras 10.1 SSE	0.62"
Thoreau 0.8 ENE	0.62"
Cuba 2.1 NNW	0.62"
Santa Fe 16.7 SSE	0.62"

Monthly Precipitation



Current Drought Conditions & Four Week Improvement

U.S. Drought Monitor New Mexico



March 3, 2026

(Released Thursday, Mar. 5, 2026)
Valid 7 a.m. EST

Drought Conditions (Percent Area)

	None	D0-D4	D1-D4	D2-D4	D3-D4	D4
Current	0.00	100.00	81.39	36.62	1.99	0.00
Last Week 02-24-2026	2.74	97.26	67.72	36.57	1.99	0.00
3 Months Ago 12-02-2025	16.94	83.06	70.93	51.95	2.59	0.00
Start of Calendar Year 01-06-2026	0.01	99.99	71.71	51.89	2.59	0.00
Start of Water Year 09-30-2025	19.91	80.09	68.67	47.53	14.45	2.41
One Year Ago 03-04-2025	8.32	91.68	71.42	40.86	13.98	0.08

- Intensity**
- None
 - D0 Abnormally Dry
 - D1 Moderate Drought
 - D2 Severe Drought
 - D3 Extreme Drought
 - D4 Exceptional Drought

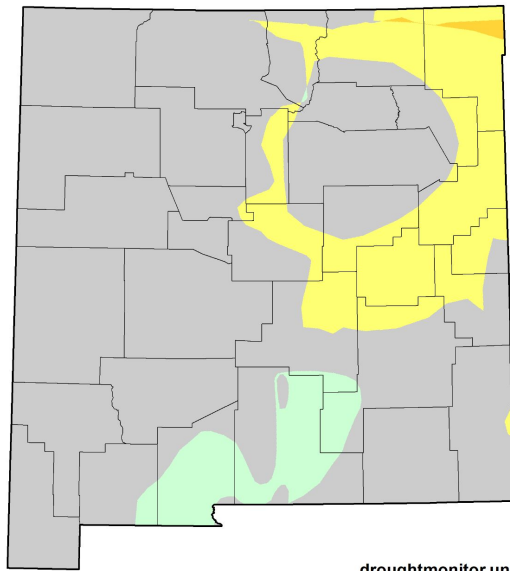
The Drought Monitor focuses on broad-scale conditions. Local conditions may vary. For more information on the Drought Monitor, go to <https://droughtmonitor.unl.edu/About.aspx>

Author:
Brad Pugh
CPC/NOAA



droughtmonitor.unl.edu

U.S. Drought Monitor Class Change - New Mexico 4 Week



March 3, 2026
compared to
February 3, 2026

droughtmonitor.unl.edu

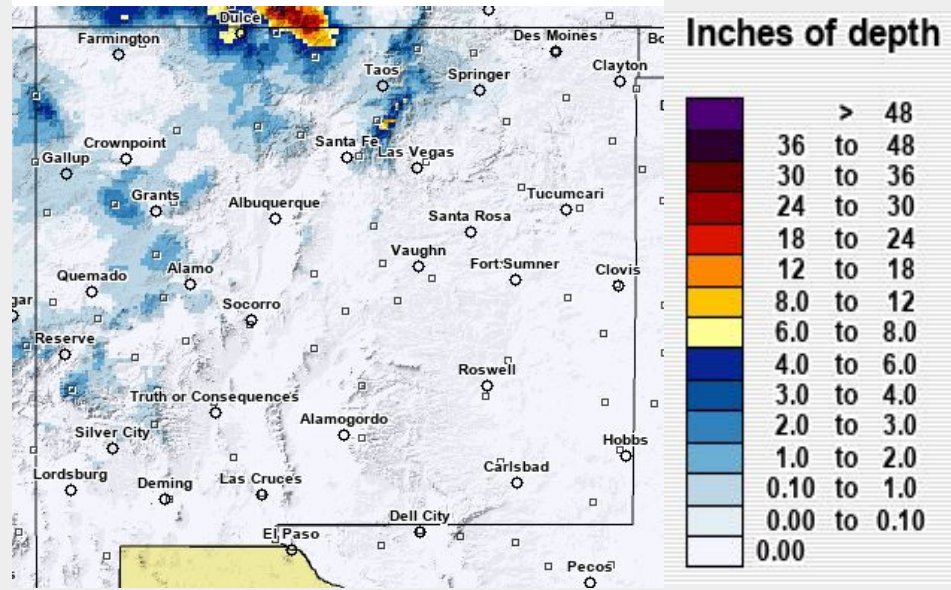
- 5 Class Degradation
- 4 Class Degradation
- 3 Class Degradation
- 2 Class Degradation
- 1 Class Degradation
- No Change
- 1 Class Improvement
- 2 Class Improvement
- 3 Class Improvement
- 4 Class Improvement
- 5 Class Improvement



Weather Event of the Month: Mid-February Multi-Hazard Storm

A series of spring-like storm systems brought strong winds, critical fire weather conditions, patchy blowing dust, and rain/snow to the area between February 16 and 18th. There was one notable fire start in Harding County (Smith Fire) which burned over 3,000 acres. Wind gusts of 50 mph+ occurred in every corner of the state, and a few gusts over 70 mph were recorded. Western and northern New Mexico received light, but much-needed rain and snow along fast-moving Pacific cold fronts.

48 hr snowfall ending 5PM Feb. 18th (in)



Top Wind Gust Reports: Feb. 16 - 18

Location	Max Wind Gust (mph)
Raton Crews Airport	72
Clayton Municipal Airpark	70
Gallup Airport	70
Clovis	69
Dora 2 SW	69
Clines Corners	69
Little Burro - WSMR	68



Additional Resources

PRISM Charts: <https://prism.oregonstate.edu/>

CPC Outlooks: <https://www.cpc.ncep.noaa.gov/>

NCEI Climatological Rankings:
<https://www.ncei.noaa.gov/access/monitoring/climate-at-a-glance/statewide/time-series>

