



October Weather Highlights for Central & Northern New Mexico



October Temperatures

Location	Observed Avg. Temp (°F)	Normal Avg. Temp (°F)	Departure (°F)	Rank ^{Years in POR} (1 is hottest)
Albuquerque (KABQ)	62.8	58.4	4.4	4 ¹³⁵
Roswell (KROW)	66.4	63.2	3.2	2 ¹³³
Clayton (KCAO)	58.3	54.7	3.6	14 ¹³⁰
Raton (KRTN)	53.8	50.6	3.2	7 ⁸⁰
Las Vegas (KLVS)	54.1	51	3.1	9 ⁸⁶
Santa Fe (KSAF)	55.6	52.6	3	8 ⁸⁵
Tucumcari (KTCC)	63.5	59.2	4.3	4 ⁷⁸
Clines Corners (KCQC)	53.3	51.2	2.1	6 ²⁸
Farmington (KFMN)	56.4	53.3	3.1	8 ⁸⁵
Gallup (KGUP)	52.6	49.7	2.9	8 ⁵³

Photo Courtesy Roch Hart



October Precipitation

Location	Observed Precip (in)	Normal Precip (in)	Departure (in)	Rank <small>Years in POR</small> <small>(1 is wettest)</small>
Albuquerque (KABQ)	0.48	0.87	-0.39	70 ¹³⁵
Roswell (KROW)	0.88	1.33	-0.45	56 ¹³³
Clayton (KCAO)	0.59	1.13	-0.54	60 ¹³⁰
Raton (KRTN)	0.79	0.92	-0.13	22 ⁸⁵
Las Vegas (KLVS)	1.87	1.36	0.51	24 ⁸⁶
Santa Fe (KSAF)	2.04	1.22	0.82	11 ⁸⁵
Tucumcari (KTCC)	1.01	1.31	-0.3	25 ⁷⁸
Clines Corners (KCQC)	1.92	1.34	0.58	7 ²⁸
Farmington (KFMN)	2.08	0.79	1.29	9 ⁸⁵
Gallup (KGUP)	1.89	0.92	0.97	6 ⁵³

Photo Courtesy Anna Jones



October 2025 Monthly Highlights

Highest CoCoRaHS Reports

Station Name	Total Precipitation (Inches)
Chama 1.0 N	4.25
Aztec 9.9 NE	3.10
Clovis 13.1 N	3.04
Santa Fe 10.6 WSW	2.78
Glorieta 2.4 E	2.74
Jemez Springs 2.8 SSW	2.69
Clovis 4.4 S	2.66
Mountainair 2.2 N	2.66
Jemez Pueblo 5.7 NNW	2.59
Clayton 32.9 SW	2.53

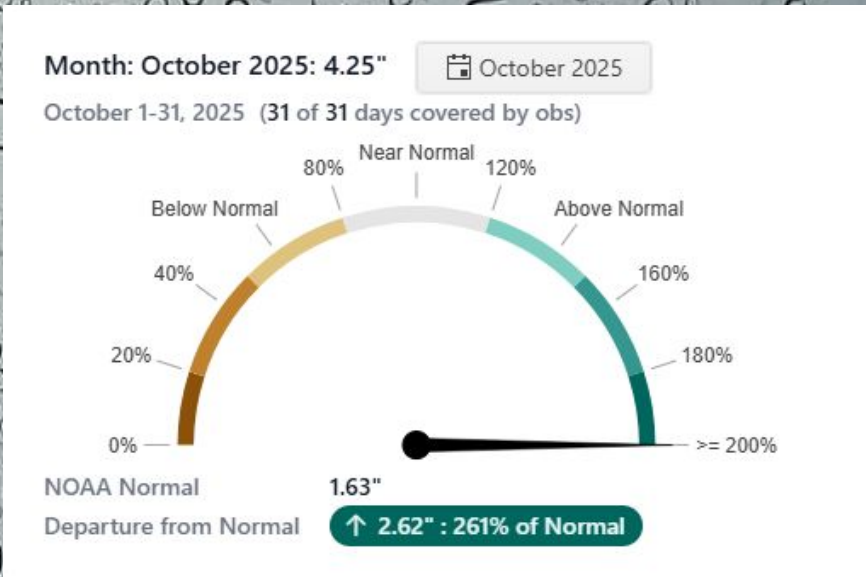
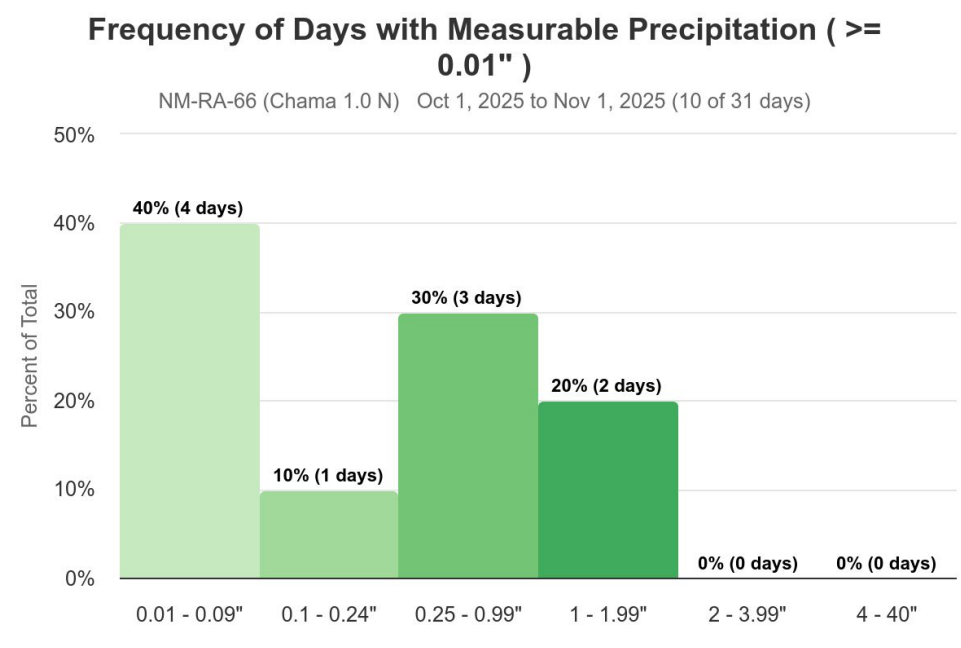
Station Name	Total Precipitation (Inches)
Ocate 3.7 WNW	2.51
Edgewood 1.8 SSE	2.49
McAlister 7.7 N	2.47
Clovis 3.3 SW	2.41
Farmington 2.3 NNE	2.41
Mountainair 16.7 SW	2.40
Rowe 2.7 NNW	2.38
Los Alamos 2.5 WSW	2.36
Aztec 5.2 E	2.35
House 0.1 S	2.33

Photo Courtesy: Michael Anand



October 2025 Monthly Highlights

CoCoRaHS Spotlight of the Month: Chama 1 N



October Precipitation

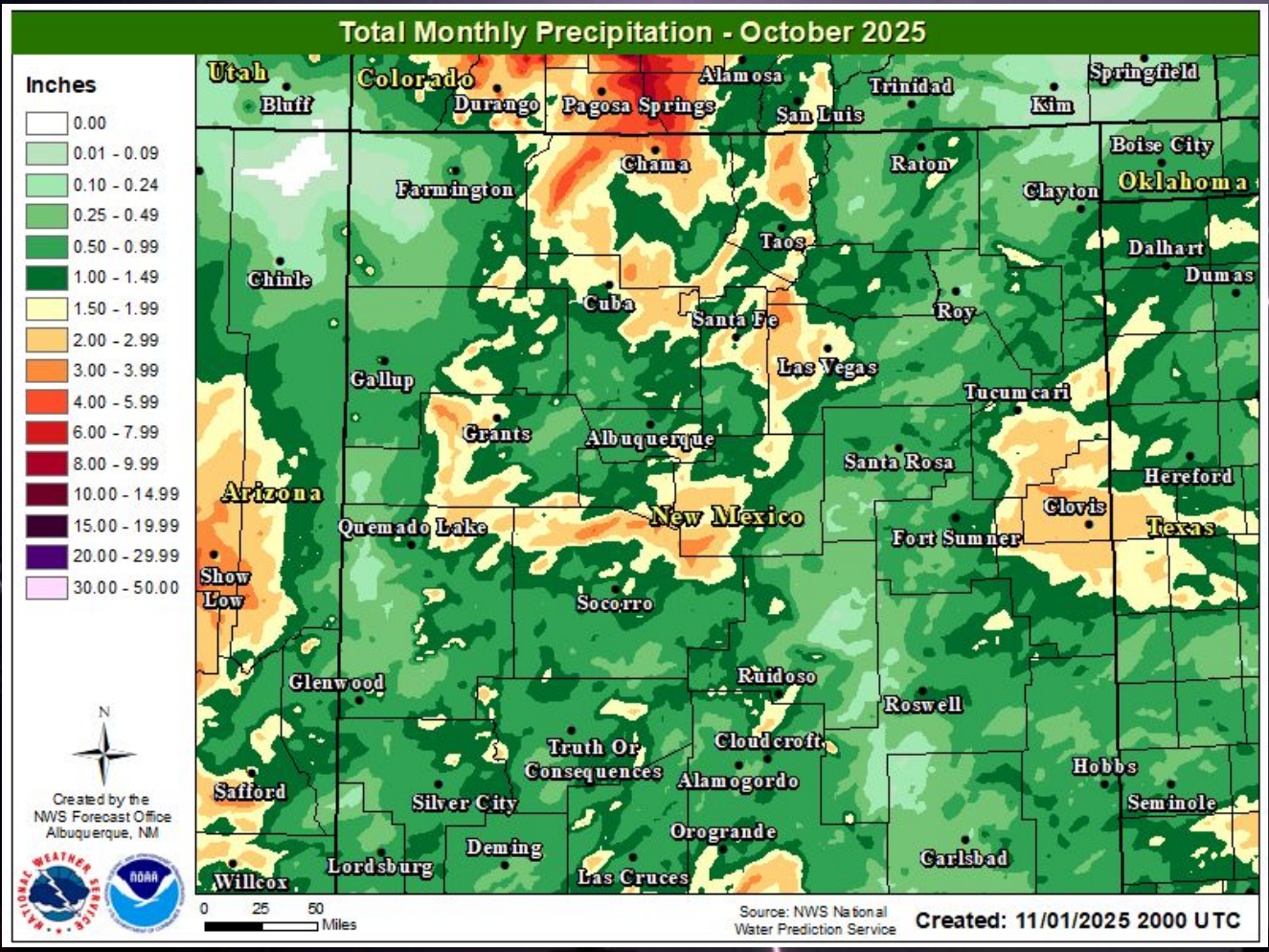


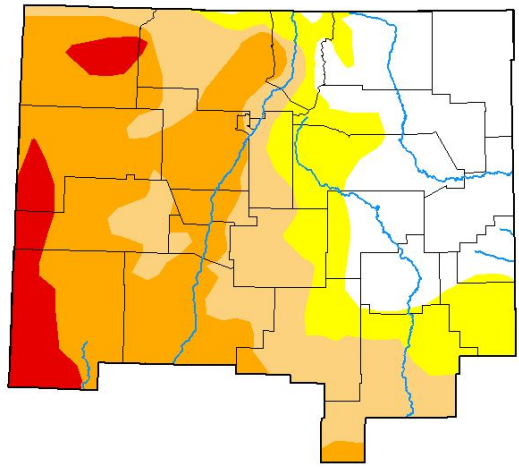
Photo Courtesy Todd Shoemake



October 2025 Monthly Highlights

Current Drought Conditions & Four Week Improvement

U.S. Drought Monitor Albuquerque, NM WFO



October 28, 2025
(Released Thursday, Oct. 30, 2025)
Valid 8 a.m. EDT

Drought Conditions (Percent Area)

	None	D0-D4	D1-D4	D2-D4	D3-D4	D4
Current	25.14	74.86	59.45	37.26	6.40	0.00
Last Week 10-21-2025	25.23	74.77	59.41	37.26	6.40	0.00
3 Months Ago 07-29-2025	9.04	90.96	72.03	54.70	21.71	0.22
Start of Calendar Year 01-07-2025	55.95	44.05	16.83	2.77	0.05	0.00
Start of Water Year 09-30-2024	26.11	73.89	60.03	39.46	12.34	0.08
One Year Ago 10-29-2024	29.49	70.51	15.87	2.77	0.05	0.00

Intensity:
 None (White) D2 Severe Drought (Yellow)
 D0 Abnormally Dry (Light Orange) D3 Extreme Drought (Red)
 D1 Moderate Drought (Orange) D4 Exceptional Drought (Dark Red)

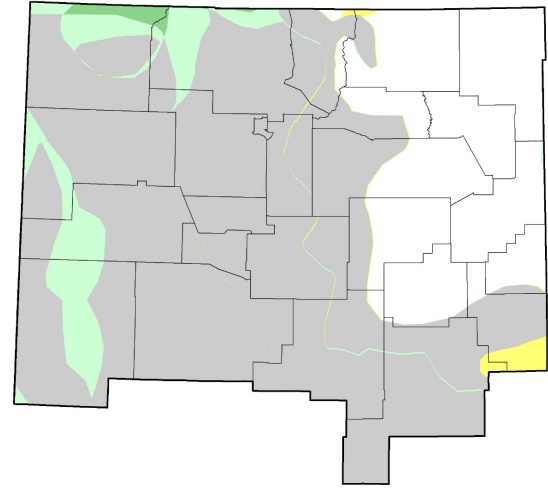
The Drought Monitor focuses on broad-scale conditions. Local conditions may vary. For more information on the Drought Monitor, go to <https://droughtmonitor.unl.edu/About.aspx>

Author:
Richard Tinker
CPC/NOAA/NWS/NCEP



droughtmonitor.unl.edu

U.S. Drought Monitor Class Change - Albuquerque, NM WFO 4 Week



October 28, 2025
compared to
September 30, 2025

droughtmonitor.unl.edu

- 5 Class Degradation (Dark Brown)
- 4 Class Degradation (Brown)
- 3 Class Degradation (Orange)
- 2 Class Degradation (Light Orange)
- 1 Class Degradation (Yellow)
- No Change (Grey)
- 1 Class Improvement (Light Green)
- 2 Class Improvement (Green)
- 3 Class Improvement (Dark Green)
- 4 Class Improvement (Teal)
- 5 Class Improvement (Dark Blue)

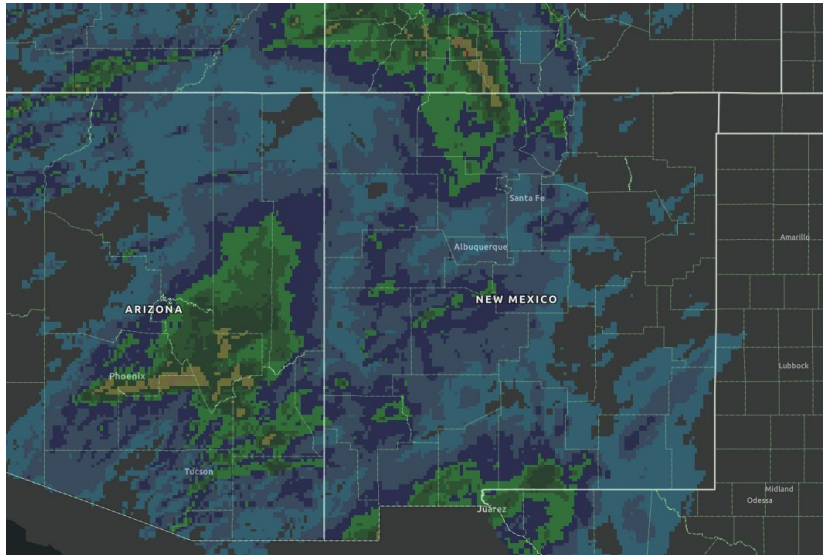


October's Defining Weather Event

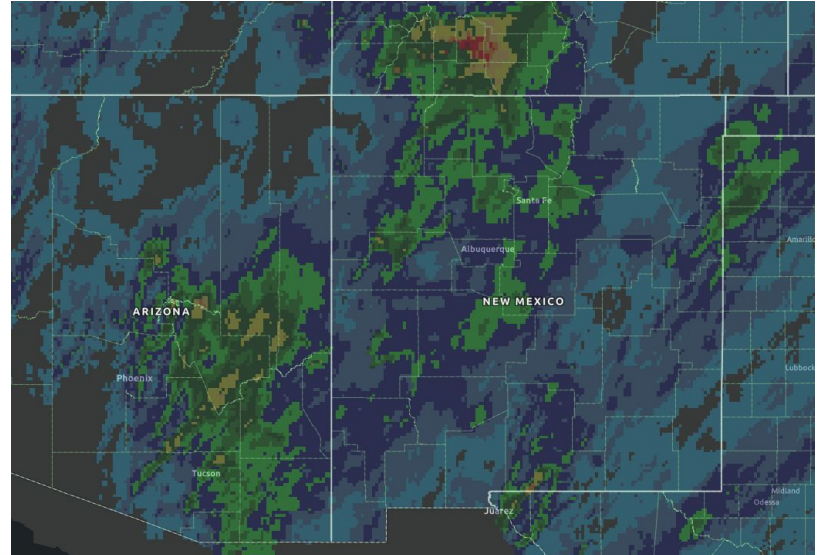
Tropical Remnants of Hurricane Priscilla & Tropical Storm Raymond

The remnants of Hurricane Priscilla and Tropical Storm Raymond pushed into the desert southwest from Oct. 9th-15th, generating widespread showers and storms. The interaction of the moisture with westerlies brought several inches of rain to New Mexico, with the highest totals in drought stricken western New Mexico. Despite the high rainfall amounts, there were only 2 reports of flash flooding during this period since rainfall rates were generally light to moderate.

Rainfall (in) Oct 12th



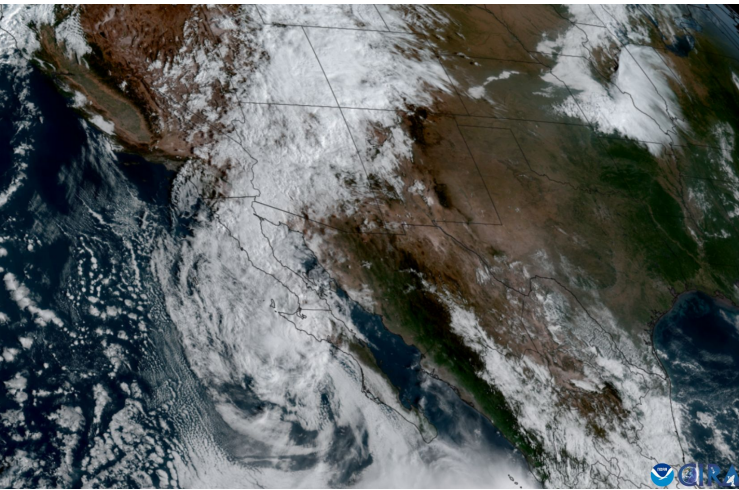
Rainfall (in) Oct 14th



October's Defining Weather Event

Tropical Remnants of Hurricane Priscilla & Tropical Storm Raymond

GeoColor Imagery: Oct. 10th at 9AM



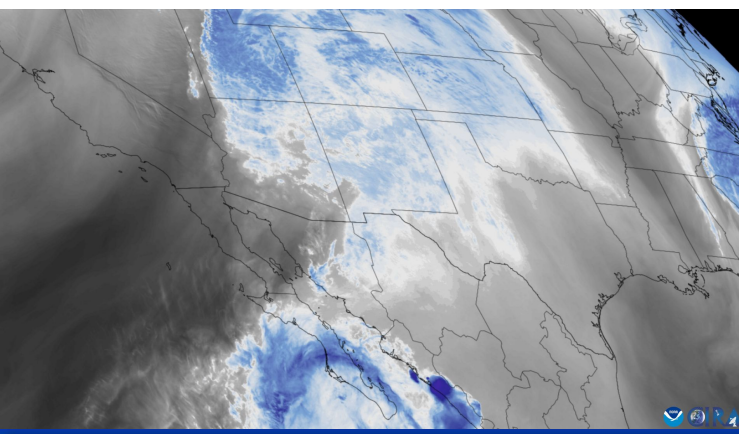
NHC Cone for Hurricane Priscilla



Mudslide on NM Road 38 - Oct 16th



Water Vapor Imagery: Oct. 11th at 3AM



Estes Arroyo in San Juan County - Oct 10th



NHC Cone for Tropical Storm Raymond

