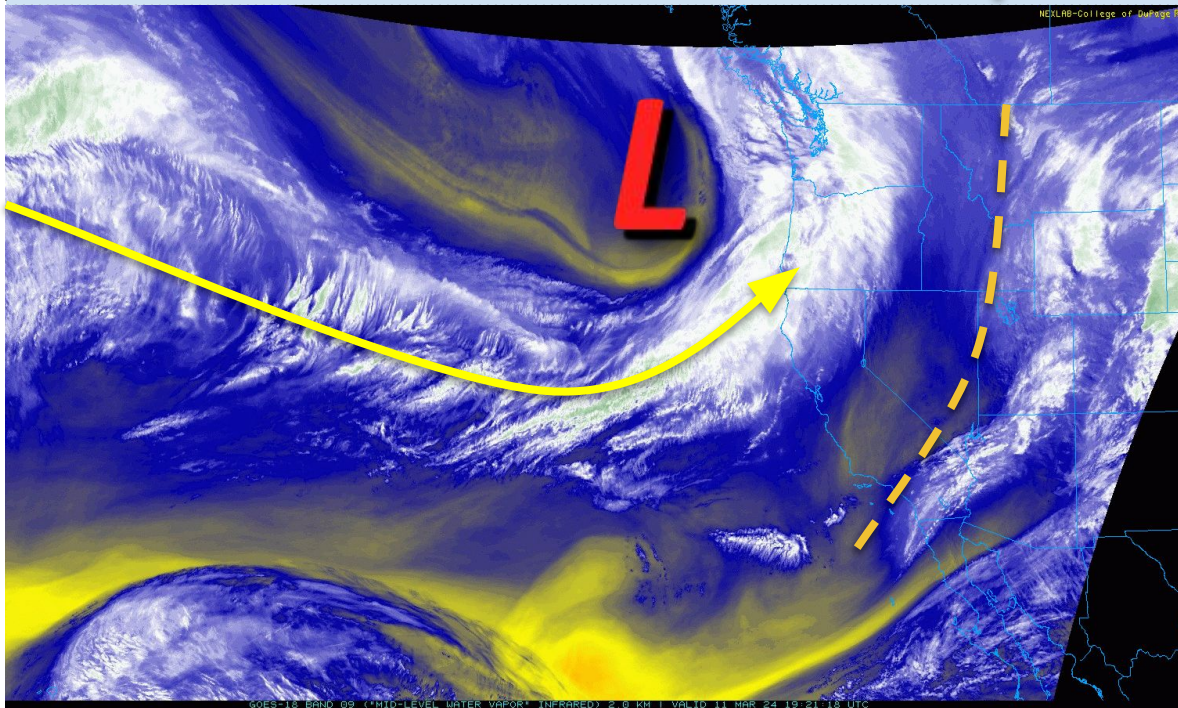




Weekly Weather Briefing

March 11, 2024

CRITICAL FIRE WEATHER TODAY | LATE WEEK WINTER STORM



Primary Concerns This Week

1. Critical fire weather conditions in eastern NM each afternoon through Wednesday
2. Locally hazardous crosswinds
3. Increasing risk for winter travel impacts; initially in western and northern NM, then expanding into the northeast/east central plains for late week



**National Oceanic and
Atmospheric Administration**
U.S. Department of Commerce

**NOAA/National Weather Service
Albuquerque, NM**



Weekly Weather Briefing

CoCoRaHS Reports for Past Week

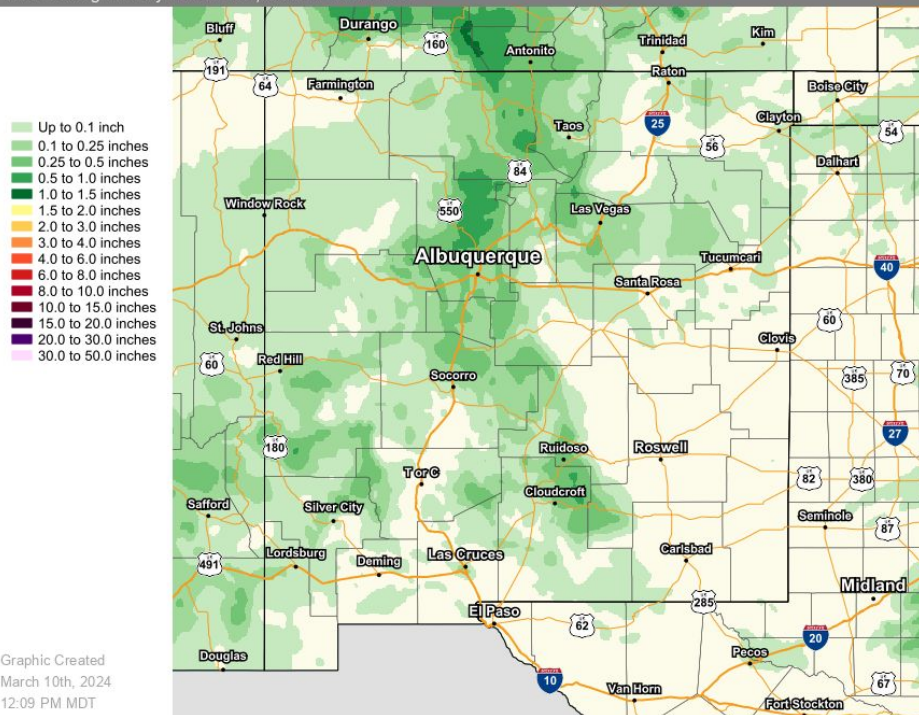
Valid: March 4-11, 2024

Station	Precipitation (in)
El Rito 0.0 SW	1.02
Jemez Pueblo 5.7 NNW	0.95
Cedar Crest 0.5 NNW	0.88
Sandia Park 0.5 S	0.75
Chama 12.3 SSE	0.74
Edgewood 11.4 SSW	0.69
Taos 19.1 W	0.68
Tijeras 3.5 E	0.67
Cloudcroft 4.0 E	0.67
Tijeras 10.1 SSE	0.64
Cedar Crest 3.0 NNE	0.62
Alto 0.3 N	0.62
Tijeras 4.2 NE	0.59
NWS Albuquerque (NM-BR-292)	0.04



Observed Precipitation

Valid Ending Sunday March 10th, 2024 at 11 AM MDT



National Oceanic and
Atmospheric Administration
U.S. Department of Commerce

NOAA/National Weather Service
Albuquerque, NM



Weekly Weather Briefing

CoCoRaHS Reports for Past Week

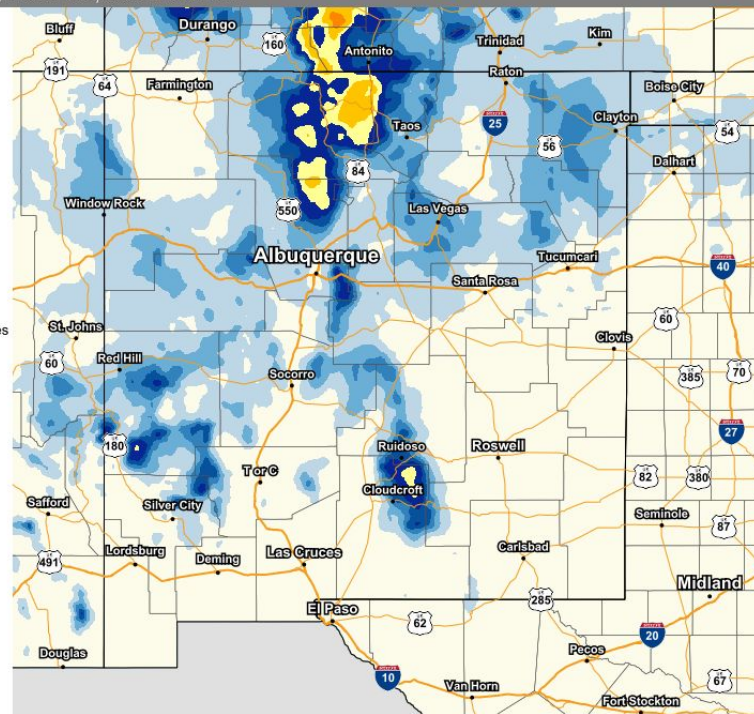
Valid: March 4-11, 2024

Station	Snowfall (in)
Jemez Springs 6.6 ENE	11.0
Chama 12.3 SSE	9.3
Sandia Park 0.5 S	8.3
Cedar Crest 0.5 NNW	7.5
Taos 19.1 W	6.9
Chacon 2.3 ENE	6.1
Gallina 2.0 W	6.1
Cloudcroft 4.0 E	6.0
Cedar Crest 3.0 NNE	5.9
Tijeras 3.5 E	5.7
Tijeras 10.1 SSE	5.6
Sapello 5.1 WNW	5.6
Ruidoso 5.6 NNE	5.5
NWS Albuquerque (NM-BR-292)	T



Observed Snowfall

Valid Ending Sunday March 10th, 2024 at 6 AM MDT



Graphic Created
March 10th, 2024
12:12 PM MDT



**National Oceanic and
Atmospheric Administration**
U.S. Department of Commerce

**NOAA/National Weather Service
Albuquerque, NM**

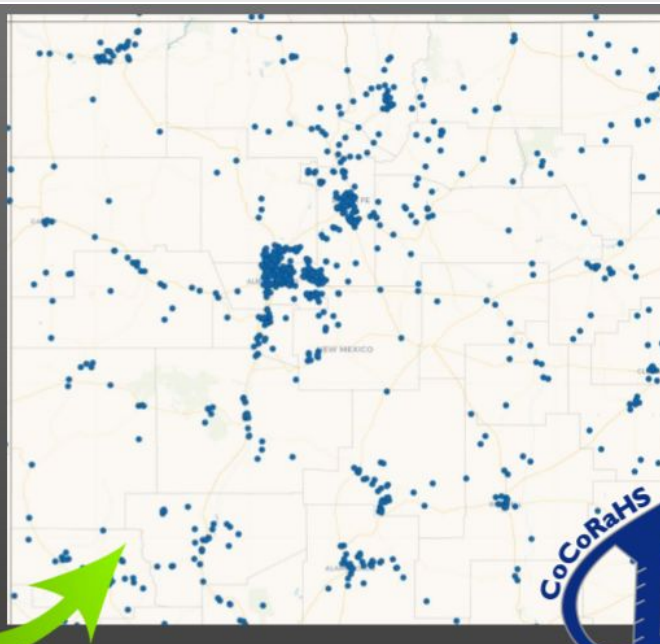


Weekly Weather Briefing

Please Join the CoCoRaHS Party!



Official NWS observations in New Mexico are few and far between...



But CoCoRaHS observers help to fill in the gaps!

There's still plenty of room on the map!

New Mexico currently has over 1,000 active CoCoRaHS observers! But there are still areas where data is hard to come by.

Help us out by signing up for CoCoRaHS at cocoahs.org!



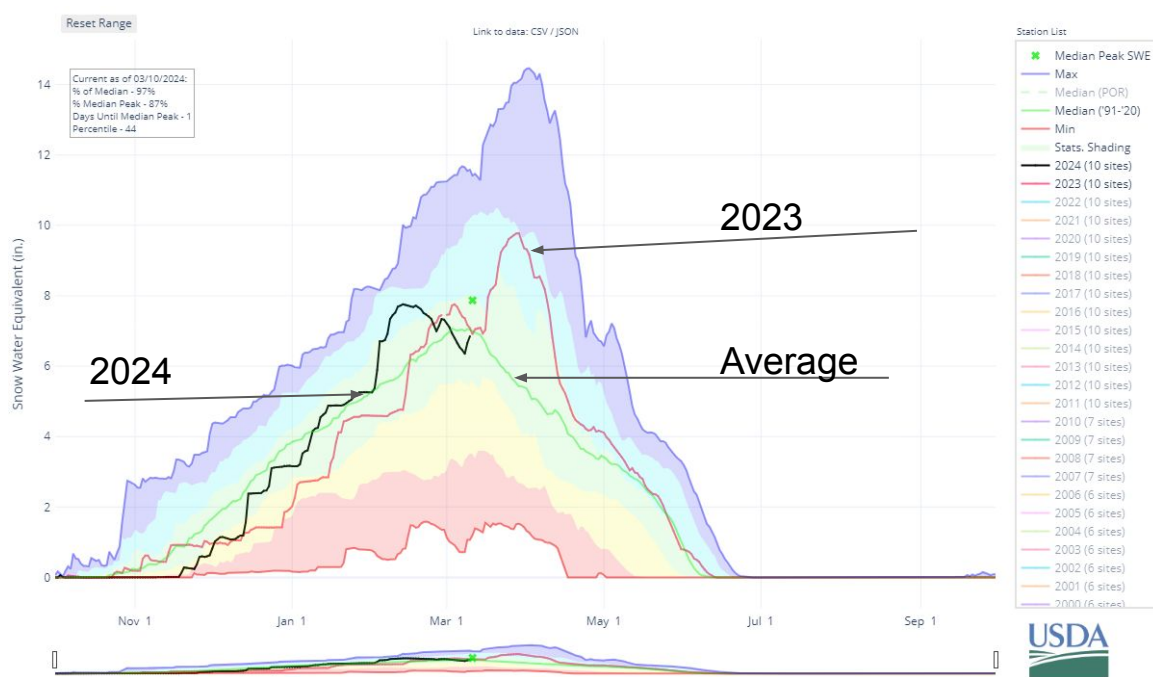
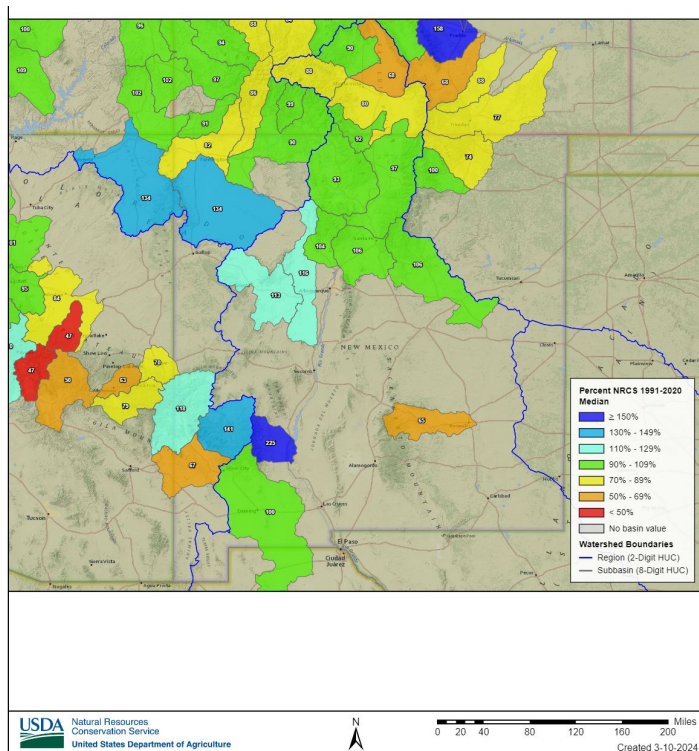
National Oceanic and
Atmospheric Administration
U.S. Department of Commerce

NOAA/National Weather Service
Albuquerque, NM



Weekly Weather Briefing

Current Snowpack in New Mexico



Nice bump for the Upper Rio Grande basin - now at 97% of normal for this time of year.



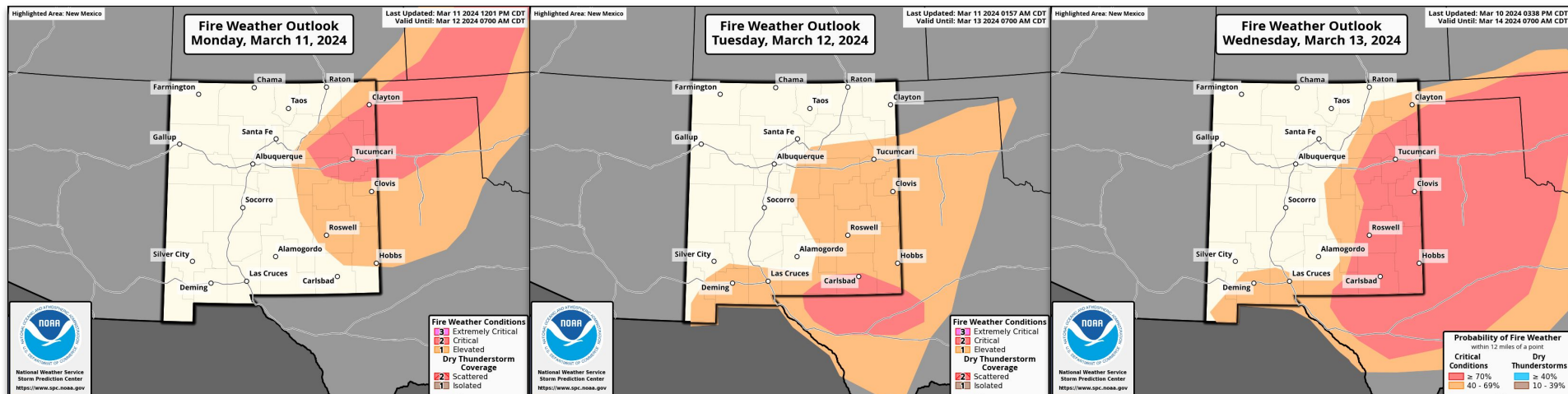
National Oceanic and Atmospheric Administration
U.S. Department of Commerce

NOAA/National Weather Service
Albuquerque, NM



Weekly Weather Briefing

Critical Fire Weather Conditions: Today through Wednesday



This Afternoon

Tuesday Afternoon

Wednesday Afternoon



**National Oceanic and
Atmospheric Administration**
U.S. Department of Commerce

**NOAA/National Weather Service
Albuquerque, NM**



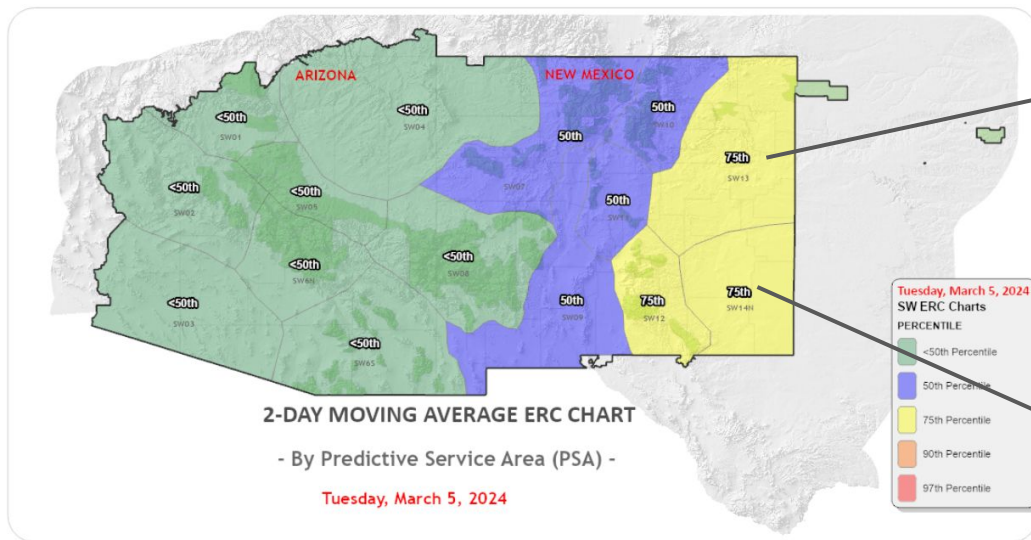
Weekly Weather Briefing

Energy Release Component (ERC)

2-DAY MOVING AVERAGE ERC CHARTS - BY PREDICTIVE SERVICES AREA (PSA)

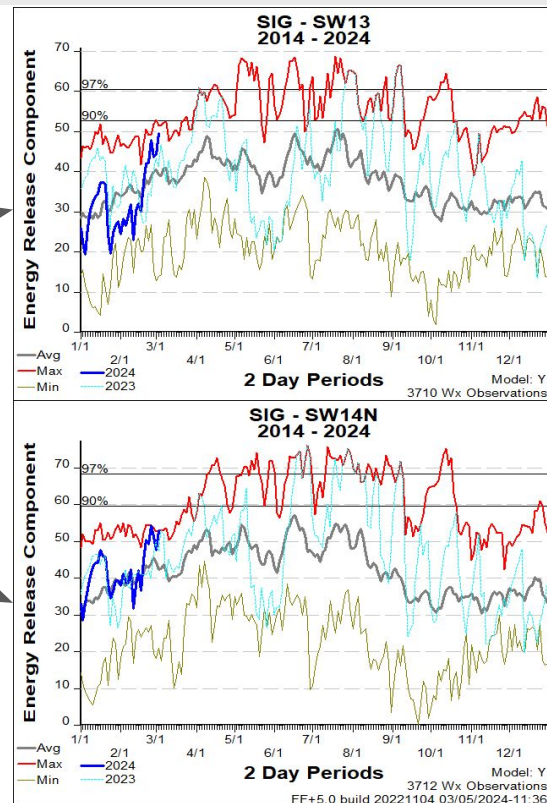
Click on Predictive Services Area to view the latest ERC Chart.

SOUTHWEST AREA



* Data for this product provided by the SWCC Predictive Services

* Map produced by SWCC Intelligence Operations Section



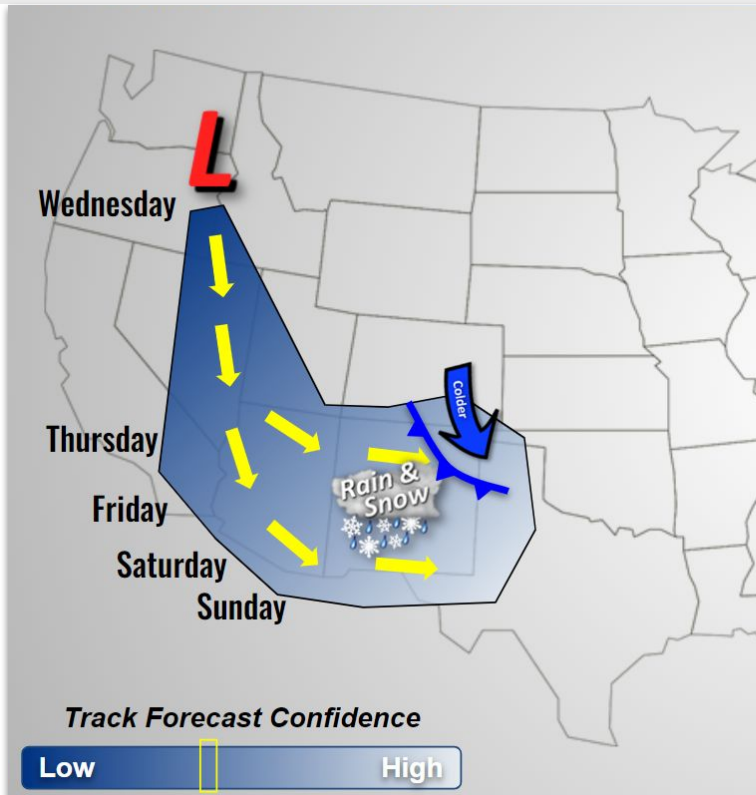
National Oceanic and
Atmospheric Administration
U.S. Department of Commerce

NOAA/National Weather Service
Albuquerque, NM



Weekly Weather Briefing

End of Week Storm | Forecast Track Confidence: 50% | Impact Potential: 40-80%



What We Know

- There is growing confidence for a winter storm system to bring rain & snow to much of northern & central NM late Thursday Night through next weekend.
- Winter travel impacts are likely.



Uncertainties

- Exact storm track & speed
- Location of any heavier areas of precipitation
- Onset & strength of east canyon winds in central NM
- How widespread winter impacts will actually be



Actions


- Stay up-to-date on the latest forecast at: weather.gov/abq
- Consider alternate plans for outdoor activities for Thursday Night - Next Weekend.





Weekly Weather Briefing

Temperature and Precipitation Outlook

 Location	Maximum Temperature							Probability of Precipitation						
	Mon 03/11	Tue 03/12	Wed 03/13	Thu 03/14	Fri 03/15	Sat 03/16	Sun 03/17	Mon 03/11	Tue 03/12	Wed 03/13	Thu 03/14	Fri 03/15	Sat 03/16	Sun 03/17
Albuquerque	63	68	64	59	49	54	57	0	0	20	70	60	30	20
Santa Fe	60	63	58	53	47	50	54	0	0	30	70	50	30	20
Farmington	63	62	55	54	50	51	56	0	20	40	50	40	10	0
Gallup	62	62	55	50	46	49	54	0	10	40	80	60	20	10
Grants	62	62	55	50	44	47	51	0	0	30	70	50	20	10
Clayton	71	70	65	45	45	51	49	0	0	30	30	30	20	10
Raton	65	66	60	42	43	47	47	0	0	50	60	40	20	10
Las Vegas	63	63	58	44	39	45	47	0	0	20	60	40	20	10
Moriarty	62	63	60	53	42	47	52	0	0	20	70	50	30	20
Tucumcari	73	74	71	56	47	57	55	0	0	10	40	50	20	20
Clovis	72	74	73	62	48	58	57	0	0	0	40	60	30	30
Roswell	74	80	78	69	52	61	62	0	0	0	60	50	30	30
Socorro	68	72	71	65	55	57	60	0	0	20	80	60	30	20
Chama	52	52	46	44	45	46	49	0	20	60	70	60	30	20
Taos	56	57	53	48	47	49	51	0	0	50	60	40	20	10
Angel Fire	48	48	43	35	35	39	41	0	0	50	60	60	30	20
Los Alamos	55	57	52	47	43	44	49	0	0	30	60	50	20	20
Ruidoso	58	60	58	55	42	47	49	0	0	10	70	60	40	40
Quemado	59	61	57	52	46	47	52	0	0	20	60	60	30	20

- **High Temps:** Above normal temperatures expected through midweek then turning colder
- **Precipitation:** Dry through the middle of the week then increased chances for the end of the week





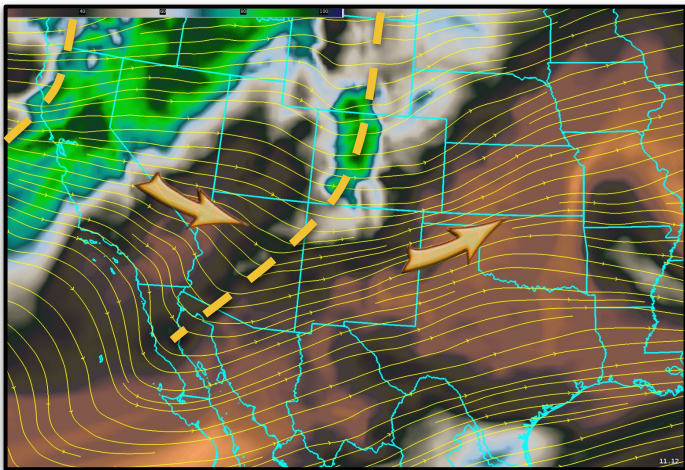
Weekly Weather Briefing

Tonight

Potential Impacts

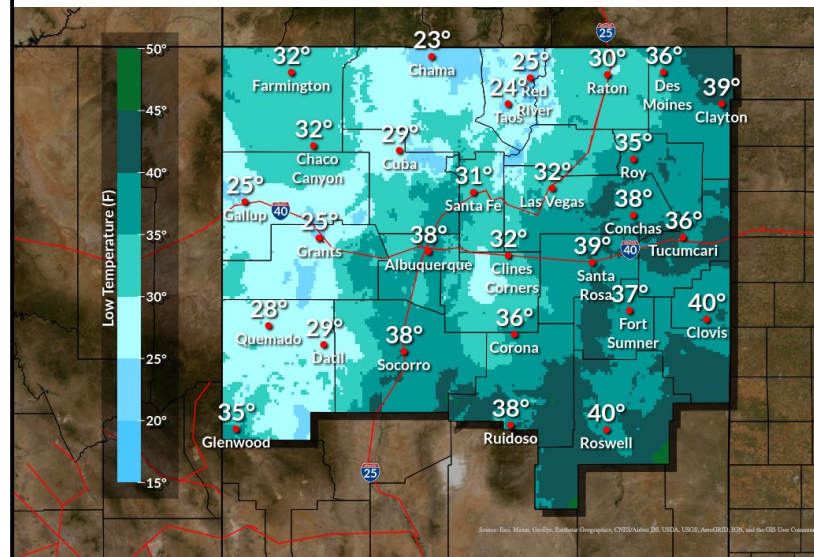
RAPID FIRE GROWTH RISK (EARLY EVE)

Upper Level Forecast Chart Valid Midnight MT



Dry —————> **Moist**

Tonight's Low Temperatures



- Critical fire weather conditions (east) diminish by early evening
- Upper level disturbance passing through the state, but very low chances for any notable precipitation | Gusty winds over mtn peaks
- Overnight low temperatures 5-12 degrees above seasonal normals





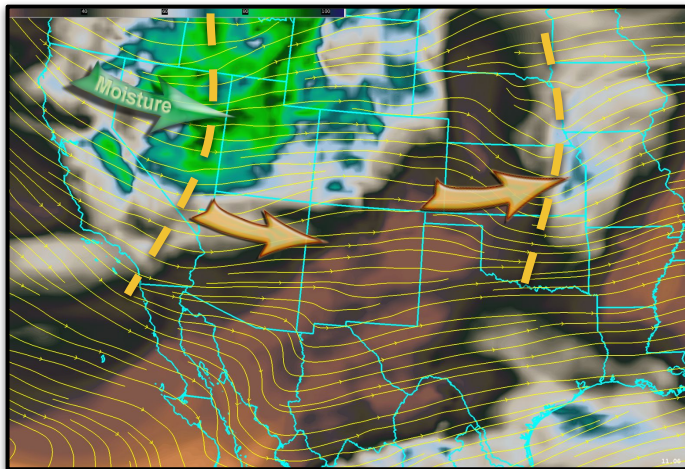
Weekly Weather Briefing

Tuesday

Potential Impacts

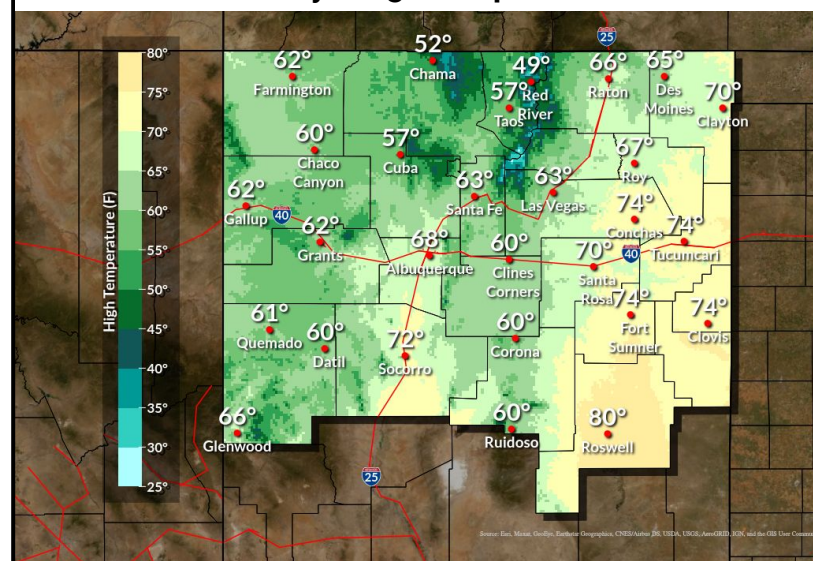
RISK FOR RAPID FIRE GROWTH (EAST)

Upper Level Forecast Chart Valid 3pm MT



Dry —————> **Moist**

Tuesday's High Temperatures



- Gusty westerly winds redevelop along/east of central mtn chain, with strongest speeds along I-40 corridor
- Gusty winds + Low RH + Dry Fuels → Critical fire weather conditions
- Increasing clouds (west) w/ near normal temps | Above normal (east)



National Oceanic and
Atmospheric Administration
U.S. Department of Commerce

NOAA/National Weather Service
Albuquerque, NM



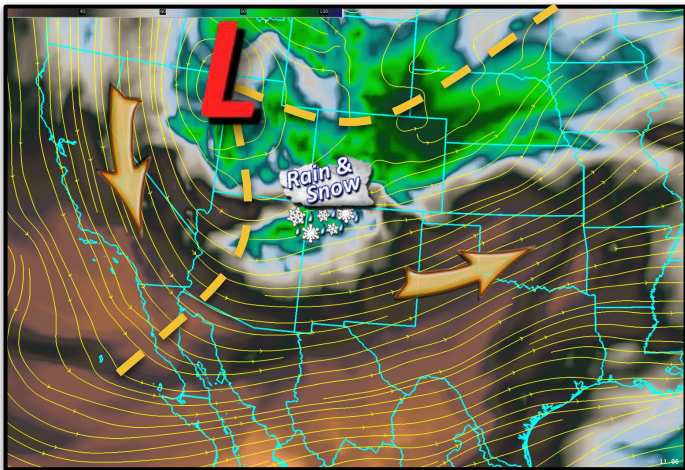
Weekly Weather Briefing

Wednesday

Potential Impacts

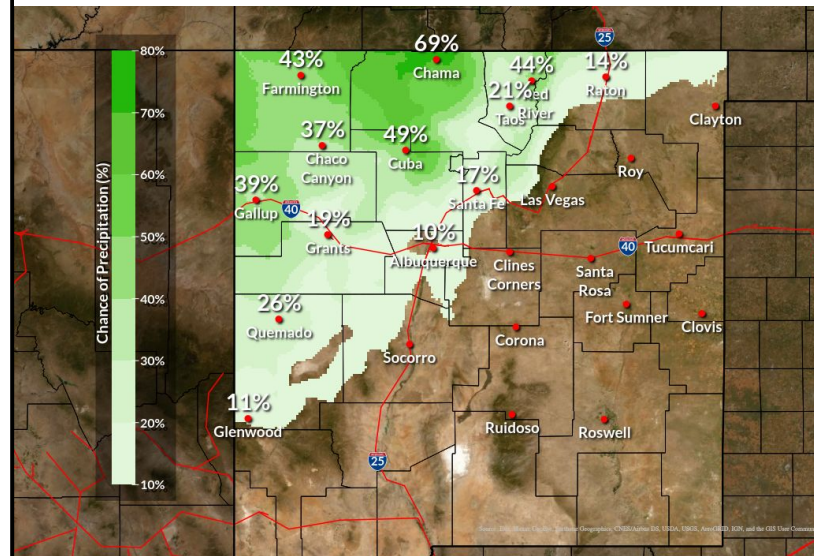
**RAPID FIRE GROWTH RISK (EAST)
WINTER TRAVEL (WRN/NRN TERRAIN)**

Upper Level Forecast Chart Valid 3pm MT



Dry —————> **Moist**

Wednesday's High Temperatures



- Greater risk for widespread breezy to windy conditions (+ blowing dust) resulting in a higher threat for critical fire weather in eastern NM
- Increasing rain and snow chances in western and northern NM | Snow levels around 7,500 feet, dropping to 5,500 feet overnight



**National Oceanic and
Atmospheric Administration**
U.S. Department of Commerce

**NOAA/National Weather Service
Albuquerque, NM**



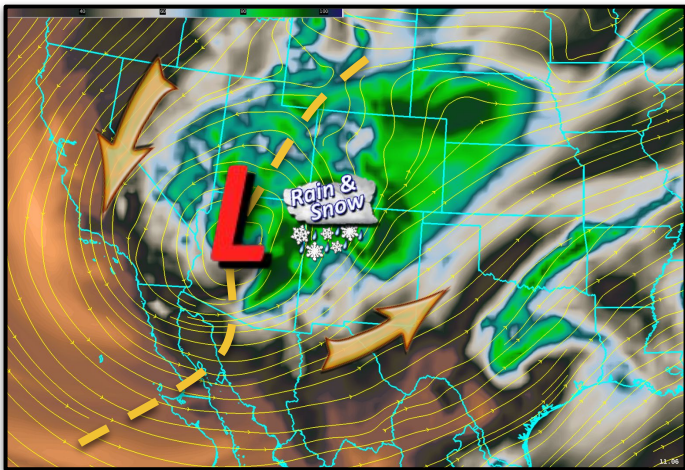
Weekly Weather Briefing

Thursday

Potential Impacts

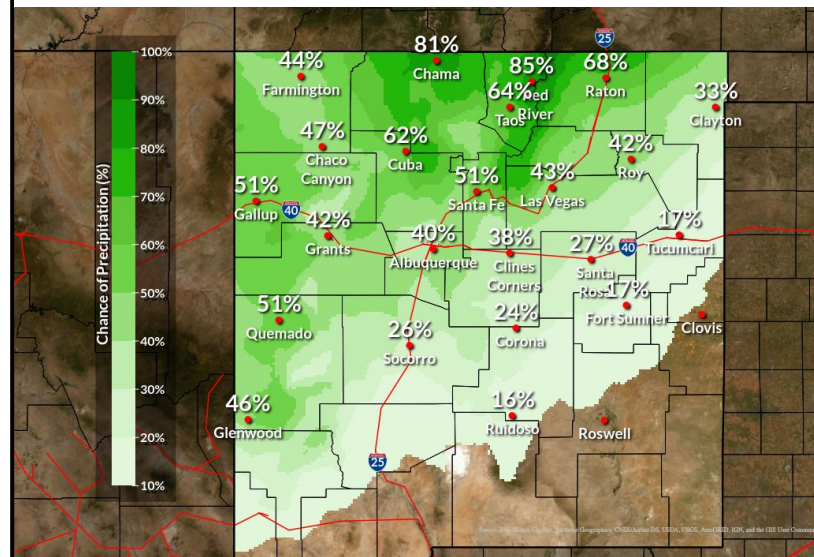
**SLICK ROADS ABOVE 6,000 FEET IN
WESTERN & NORTHERN NM**

Upper Level Forecast Chart Valid 3pm MT



Dry —————> **Moist**

Thursday's Precipitation Chances



- Next storm system originating from the Gulf of Alaska will dive into the Desert Southwest | It is still unclear on its exact trajectory
- Widespread precipitation over the area | Lowest chances in southeast
- Winter travel impacts will be favored for locations above 6,000 feet



**National Oceanic and
Atmospheric Administration**
U.S. Department of Commerce

**NOAA/National Weather Service
Albuquerque, NM**



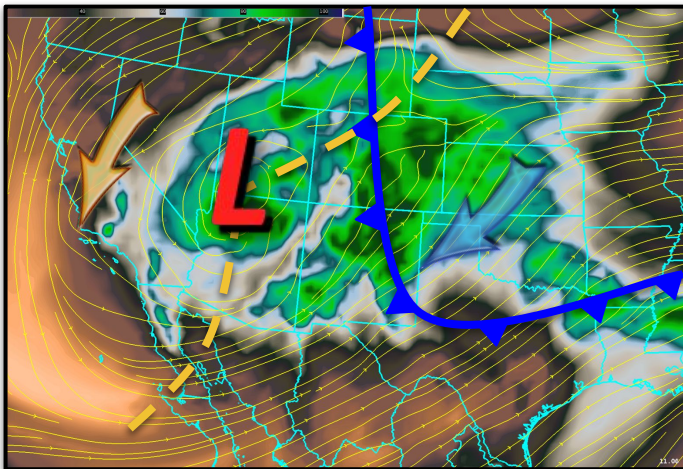
Weekly Weather Briefing

Friday

Potential Impacts

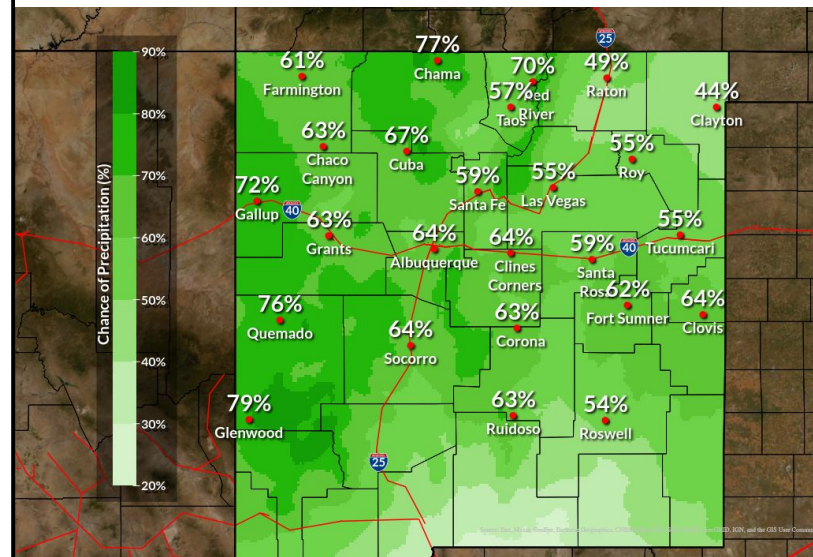
SLICK ROADS ABOVE 5,500 FEET

Upper Level Forecast Chart Valid 3pm MT



Dry —————> **Moist**

Friday's Precipitation Chances



- Didn't see the upper low move? That's right → system becomes nearly stationary | Backdoor cold front enters the picture to enhance the risk for precipitation (including snow) in the eastern plains | Morning gap winds
- Most likely the higher impact day of the week with widespread travel impacts
- High temperatures 15 to 25 degrees below normal, especially in eastern NM



**National Oceanic and
Atmospheric Administration**
U.S. Department of Commerce

**NOAA/National Weather Service
Albuquerque, NM**



Weekly Weather Briefing

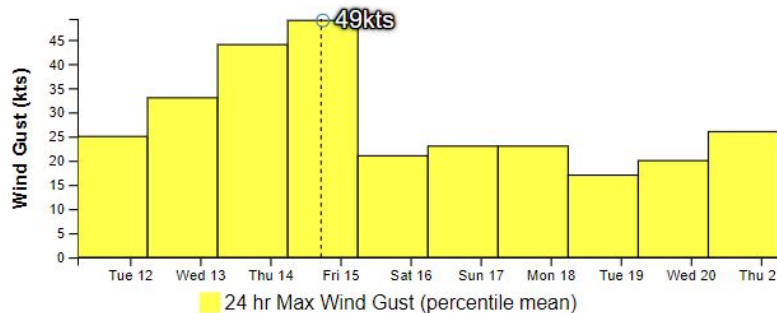
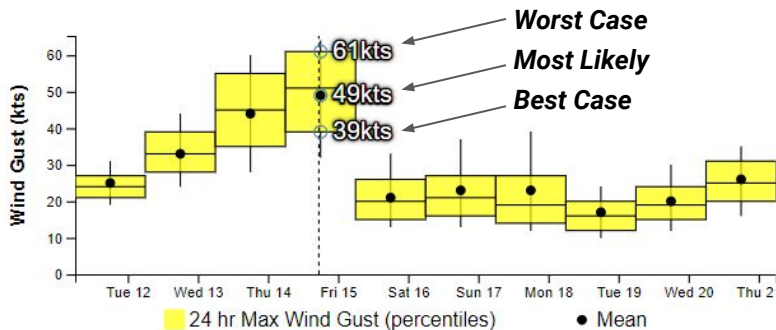
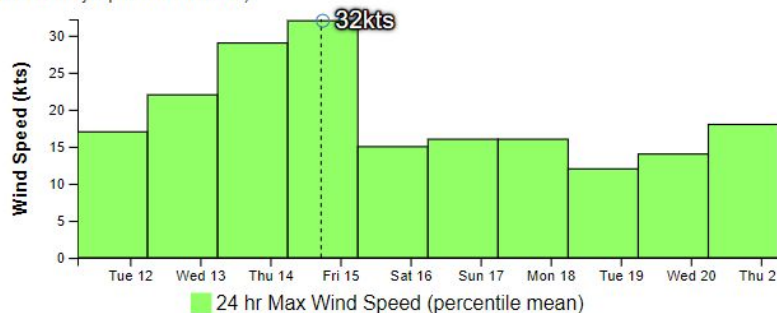
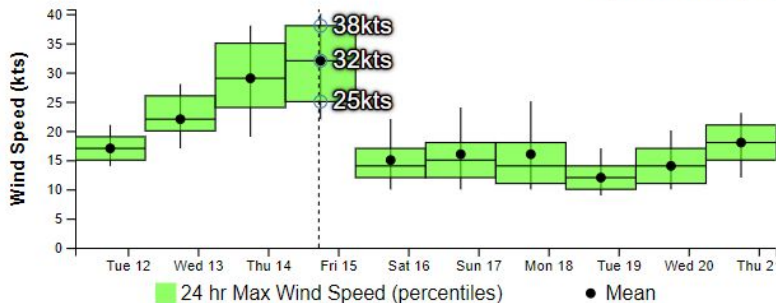
Albuquerque Gap Winds: Thursday Night into Friday Morning

KABQ ALBUQUERQUE, NM

Friday 11 am MDT, March 15, 2024

Box whiskers: 10th, 25th, 50th, 75th, & 90th

(Note: whiskers displayed from the latest synoptic hour available)

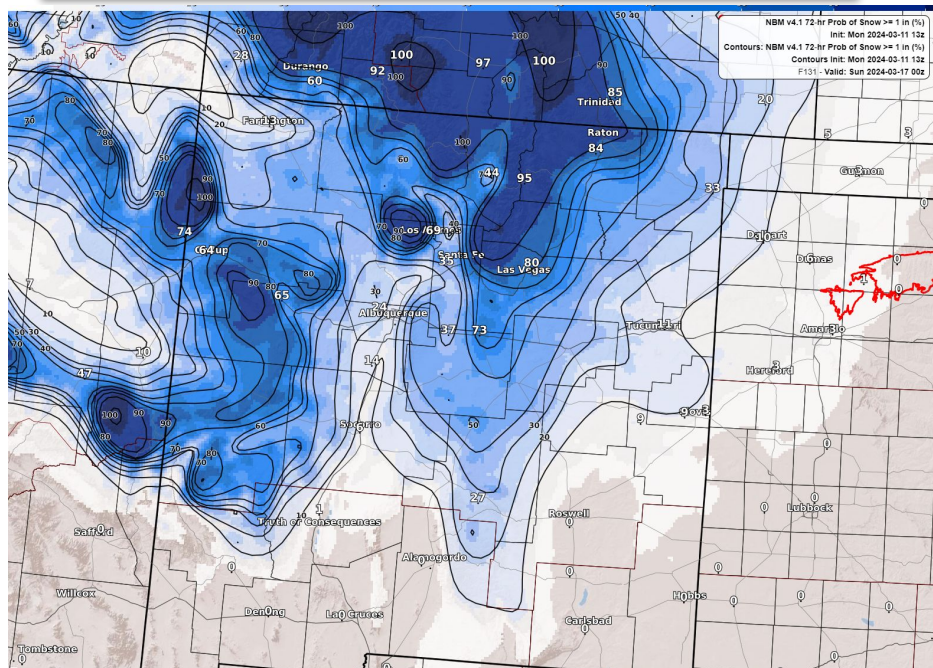




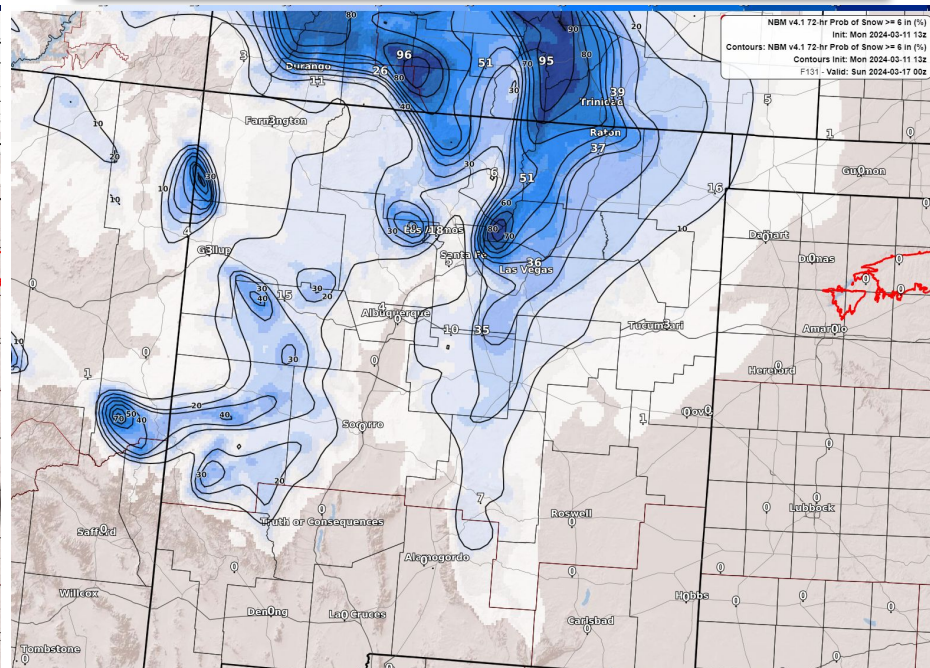
Weekly Weather Briefing

Snowfall Probabilities (Thursday - Saturday Night)

Probability of $\geq 1''$ Snowfall



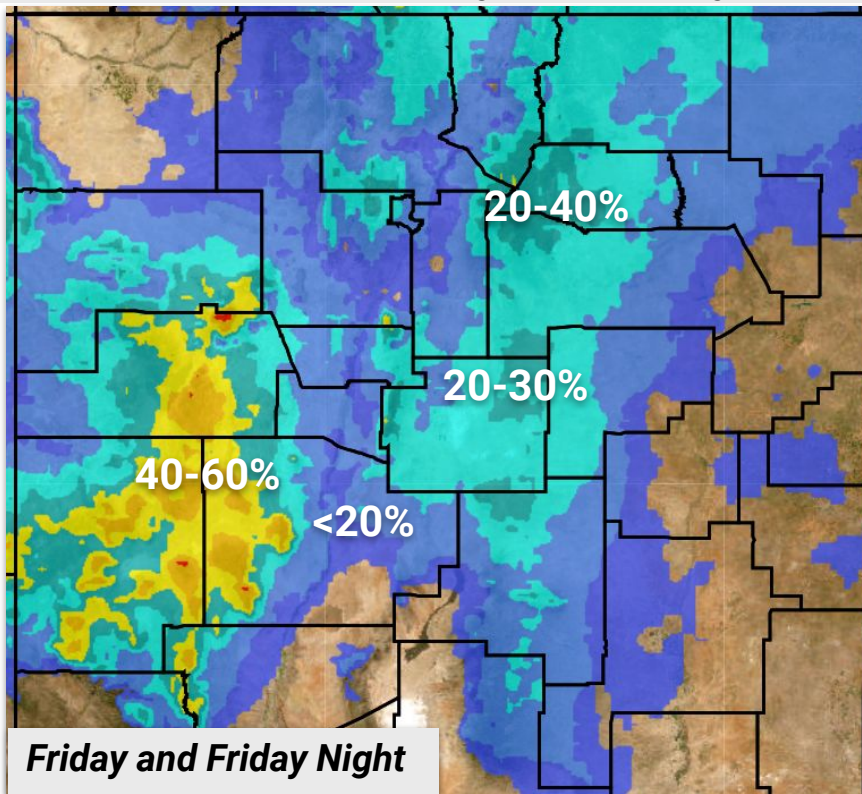
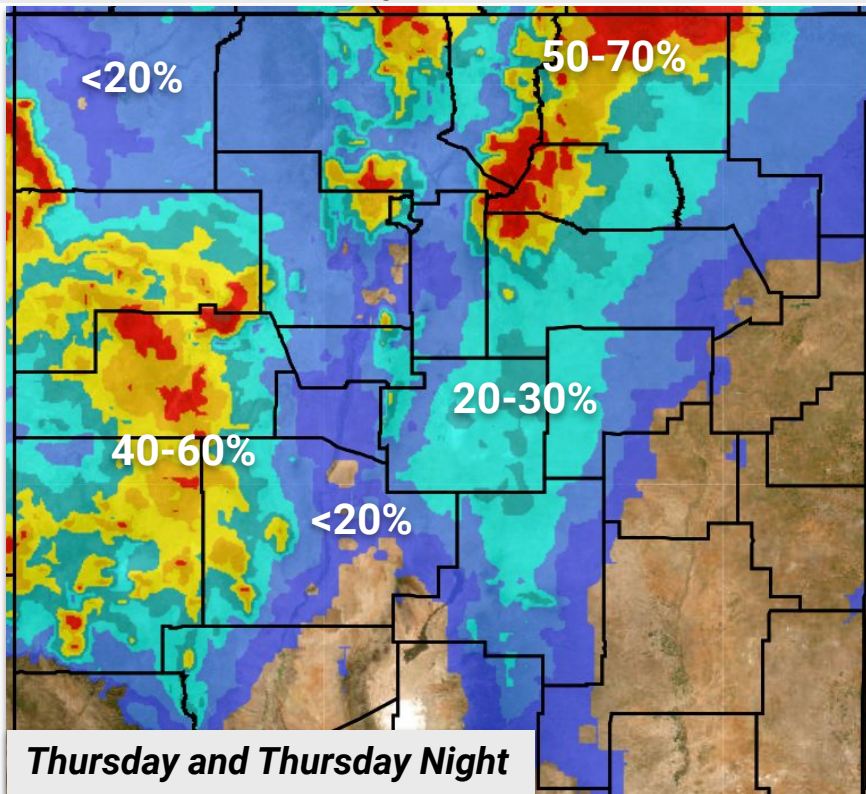
Probability of $\geq 6''$ Snowfall



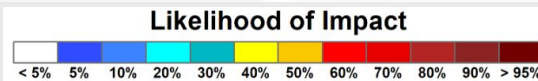


Weekly Weather Briefing

Probability for Winter Weather Travel Impacts: Thursday and Friday



National Oceanic and
Atmospheric Administration
U.S. Department of Commerce



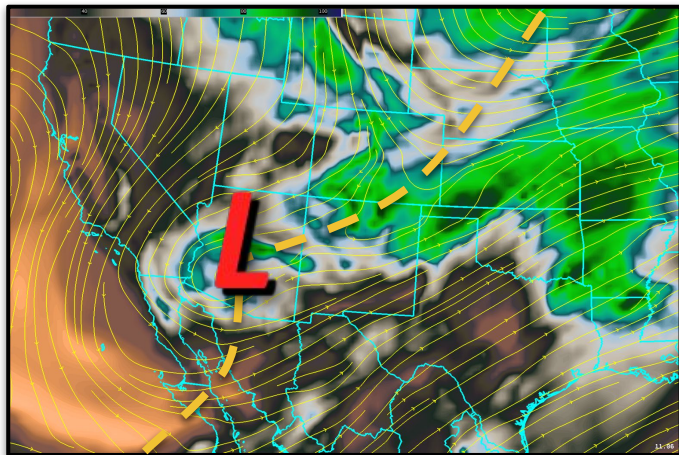
NOAA/National Weather Service
Albuquerque, NM



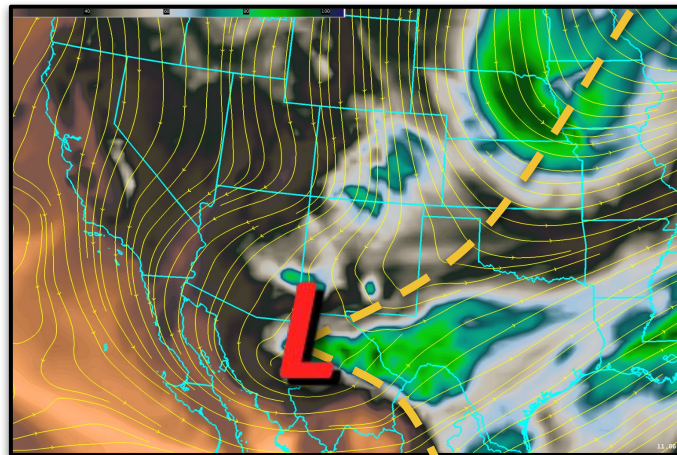
Weekly Weather Briefing

Upcoming Weekend

Saturday



Sunday



Upper Level Forecast Chart Valid 6pm MT

Mountain snow showers may linger through Saturday afternoon in the northern mountains. Clearing is likely by Sunday, allowing temperatures to climb back up to seasonal normals. Light winds are expected both days.





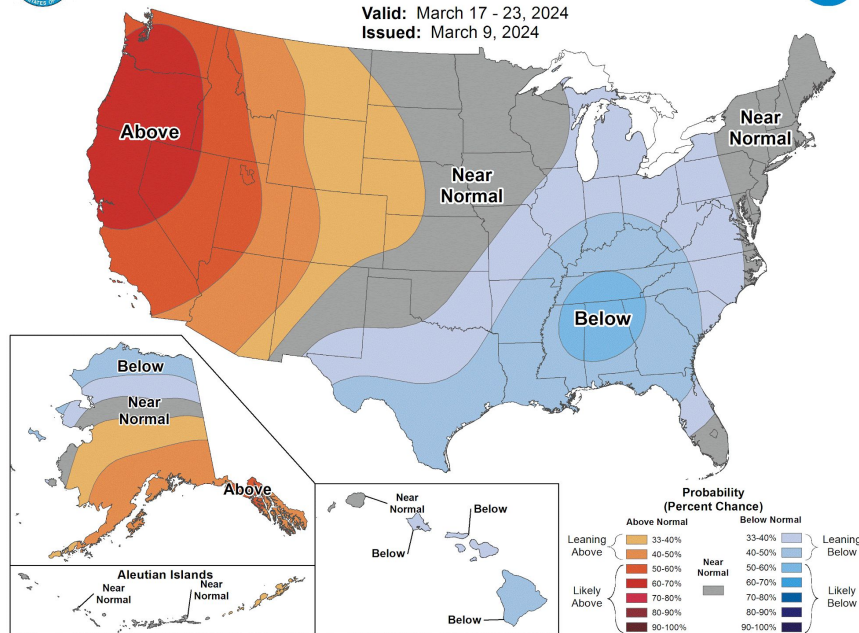
Weekly Weather Briefing

8-14 Day Temp/Precip Outlooks (Climate Prediction Center)



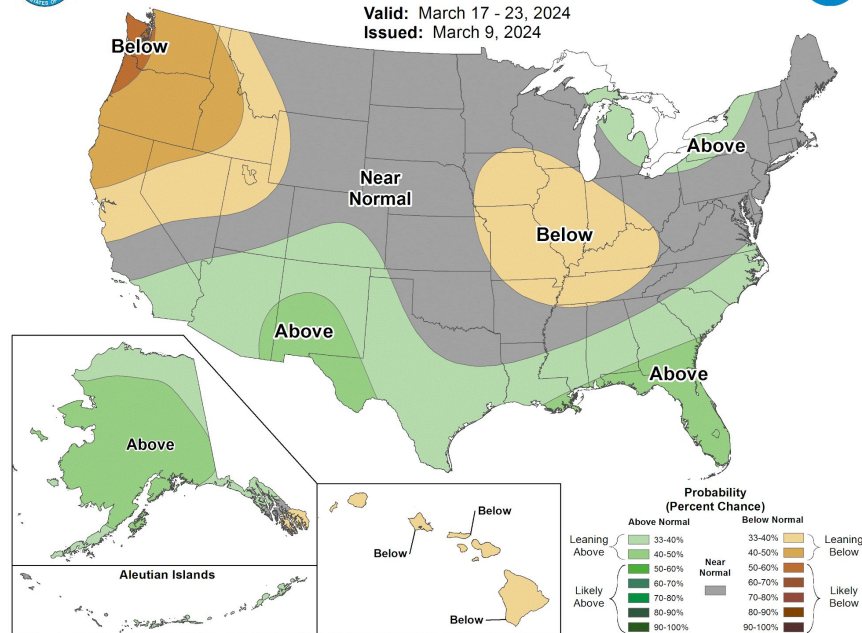
8-14 Day Temperature Outlook

Valid: March 17 - 23, 2024
Issued: March 9, 2024



8-14 Day Precipitation Outlook

Valid: March 17 - 23, 2024
Issued: March 9, 2024





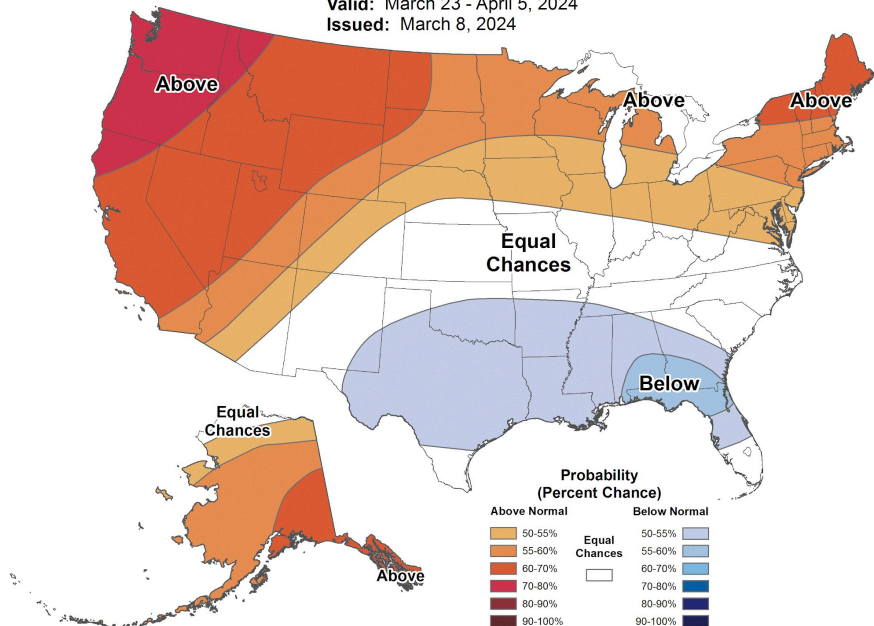
Weekly Weather Briefing

Week 3-4 Temp/Precip Outlooks (Climate Prediction Center)



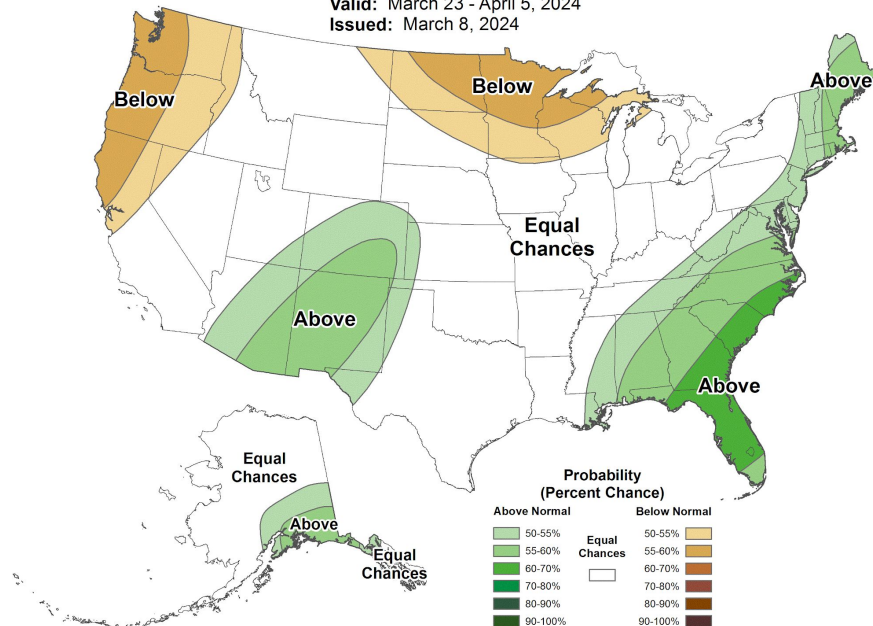
Weeks 3-4 Temperature Outlook

Valid: March 23 - April 5, 2024
Issued: March 8, 2024



Weeks 3-4 Precipitation Outlook

Valid: March 23 - April 5, 2024
Issued: March 8, 2024





Weekly Weather Briefing

Updated: March 11, 2024

Tonight

Tuesday, Mar 12

Wednesday, Mar 13

Thursday, Mar 14

Friday, Mar 15

Weekend



Rapid fire spread likely from any new start in northeast and east-central NM.



Rapid fire spread possible from any new start in east-central NM.



Slick road conditions above 6,000 ft in western and northern NM.

Rapid fire spread possible from any new start in east-central and southeast NM.



Hazardous driving conditions in the high terrain of western and northern NM, particularly through mountain passes.

Snow levels may drop as low as valley floors Thursday night, creating slick roads at lower elevations.

Strong east canyon winds will blow unsecured objects and create hazardous crosswinds on N/S oriented roads in ABQ and Santa Fe overnight



Hazardous driving conditions in the high terrain, particularly through mountain passes.

Slick travel in eastern NM and the lower elevations of central and western NM.

Strong east canyon winds will blow unsecured objects and create hazardous crosswinds on N/S oriented roads in ABQ and Santa Fe during the morning



Slick road conditions possible above 6,000 ft

Potential Impacts Color Table

This product is for situational awareness and intended to be used alongside more detailed products at <http://weather.gov/abq>



Limited (Common)



Minor (Common)



Moderate (Uncommon)



High (Rare Event)



Extreme (Very Rare Event)

National Oceanic and
Atmospheric Administration
U.S. Department of Commerce

NOAA/National Weather Service
Albuquerque, NM

