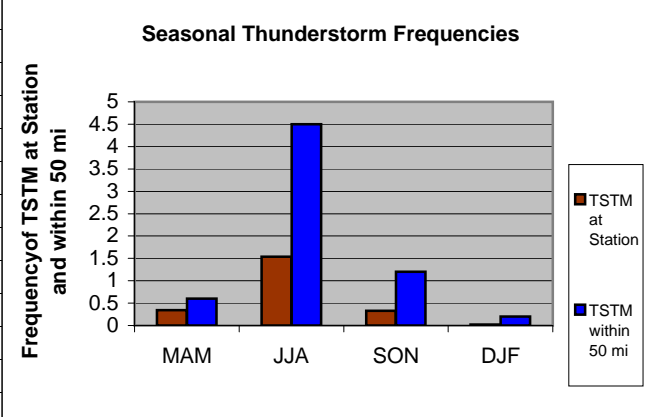
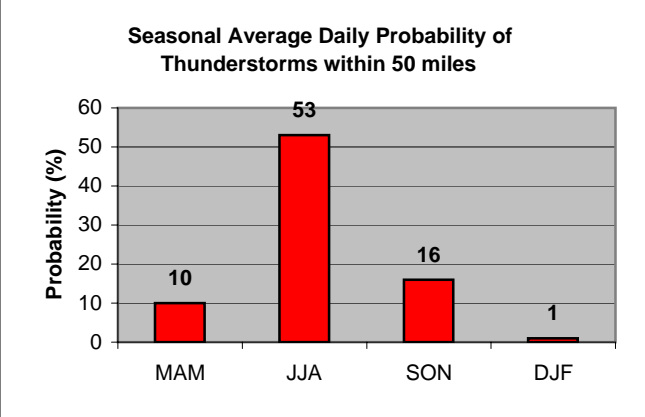


	A	B	C	D	E	F	G	H	I	
1	Wind									
2										
3	MAM	0								
4	JJA	0								
5	SON	0								
6	DJF	0								
7				<div style="text-align: center;"> <p>Significant Wind</p> <p>The chart displays a single horizontal bar at the 1.00% mark on the y-axis. The y-axis is labeled 'Freq. (%)' and ranges from 0 to 1.00 in increments of 0.20. The x-axis has no labels or bars.</p> </div>						
8										
9										
10										
11										
12										
13										
14										
15										
16										
17										
18										
19										
20										

Cell: A1

Comment: Charlie Liles:

Percent of the time the wind is crosswind >20kt and alternate runway is closed. This was reported to be less than one percent of the time.

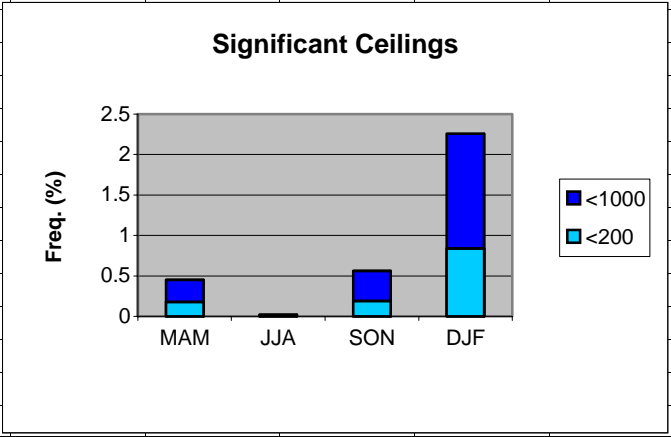
	A	B	C	D	E	F	G	H	I	J	K
1	Thunderstorms										
2		Station	50 mi			Daily Probability					
3	MAM	0.34	0.60		MAM	10					
4	JJA	1.54	4.50		JJA	53					
5	SON	0.33	1.20		SON	16					
6	DJF	0.02	0.20		DJF	1					
7											
8											
9											
10											
11											
12											
13											
14											
15											
16											
17											
18											
19											
20											

Cell: A1

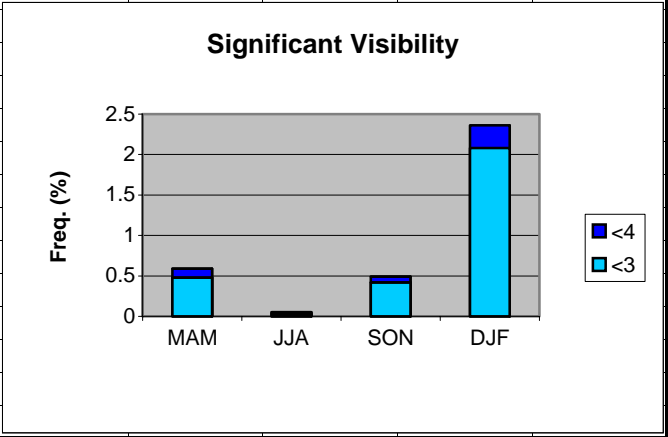
Comment: Charlie Liles:

The first graph shows the seasonal average hourly daily frequencies of thunderstorms at the station and within 50 miles. The second graph shows the seasonal average daily probability of thunderstorms within 50 miles of the station.

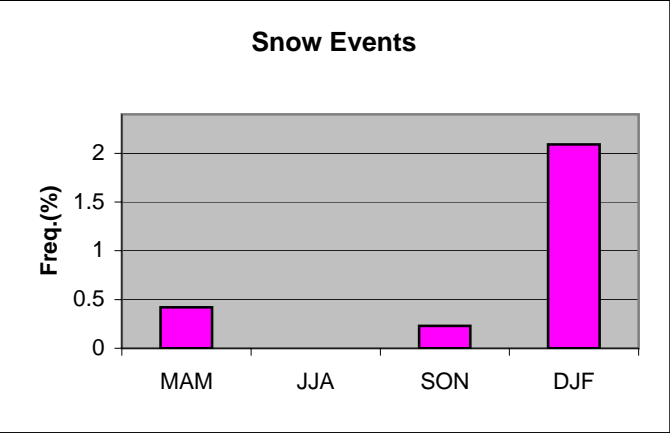
	A	B	C	D	E	F	G	H
1	Ceilings							
2		MAM	JJA	SON	DJF			
3	<1000	0.45	0.02	0.56	2.26			
4	<200	0.18	0	0.19	0.84			
5								
6								
7								
8								
9								
10								
11								
12								
13								
14								
15								
16								
17								
18								
19								



	A	B	C	D	E	F	G	H
1	Visibility							
2		MAM	JJA	SON	DJF			
3	<4	0.59	0.05	0.49	2.36			
4	<3	0.48	0.03	0.42	2.08			
5								
6								
7								
8								
9								
10								
11								
12								
13								
14								
15								
16								
17								
18								
19								



	A	B	C	D	E	F	G	H	I
1	Snow events								
2									
3	MAM	0.42							
4	JJA	0							
5	SON	0.23							
6	DJF	2.09							
7									
8									
9									
10									
11									
12									
13									
14									
15									
16									
17									
18									
19									



	A	B	C	D	E	F	G	H
1	Freezing Rain/drizzle/Ice Pellets							
2								
3	MAM	0						
4	JJA	0						
5	SON	0						
6	DJF	0.04						
7								
8								
9								
10								
11								
12								
13								
14								
15								
16								
17								
18								
19								

