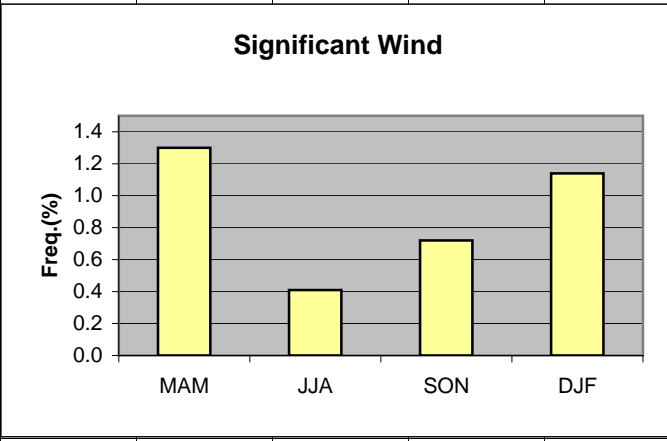


	A	B	C	D	E	F	G	H	I	J	K
1	Wind										
2											
3	MAM	1.30									
4	JJA	0.41									
5	SON	0.72									
6	DJF	1.14									
7											
8			MAM	JJA	SON	DJF					
9	>10kt 050-110		0.55	0.30	0.40	0.71					
10	>10kt 230-290		0.75	0.11	0.32	0.43					
11											
12											
13											
14											
15											
16											
17											
18											
19											
20											

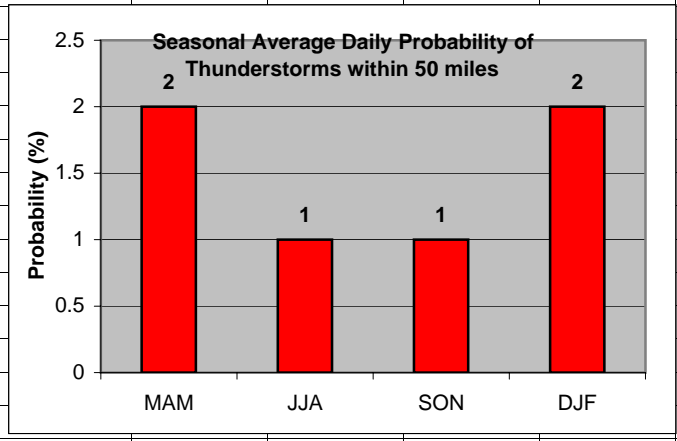
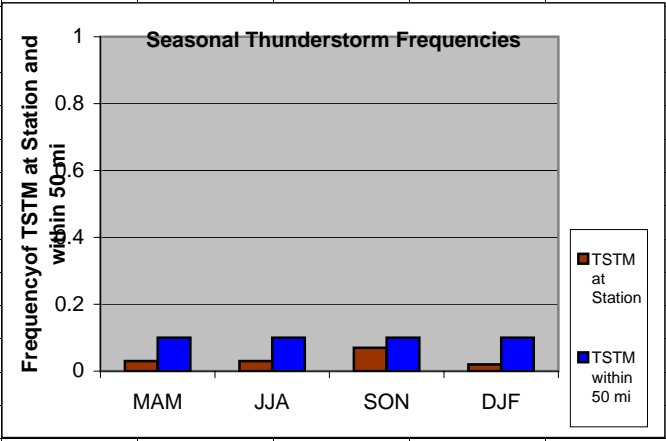


Cell: A1

Comment: Charlie Liles:

Significant wind factors: >10kt 050-110, >10kt 230-290.

	A	B	C	D	E	F	G	H	I	J	K	L
1	Thunderstorms											
2		Station	50mi		Daily Probability							
3	MAM	0.03	0.1		MAM	2						
4	JJA	0.03	0.1		JJA	1						
5	SON	0.07	0.1		SON	1						
6	DJF	0.02	0.1		DJF	2						
7												
8												
9												
10												
11												
12												
13												
14												
15												
16												
17												
18												
19												
20												
21												

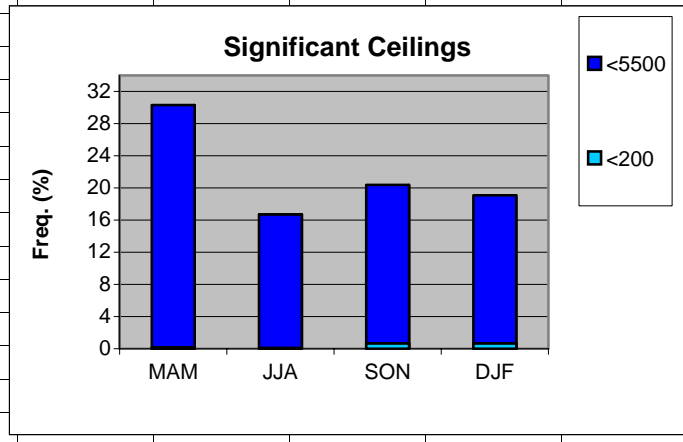


Cell: A1

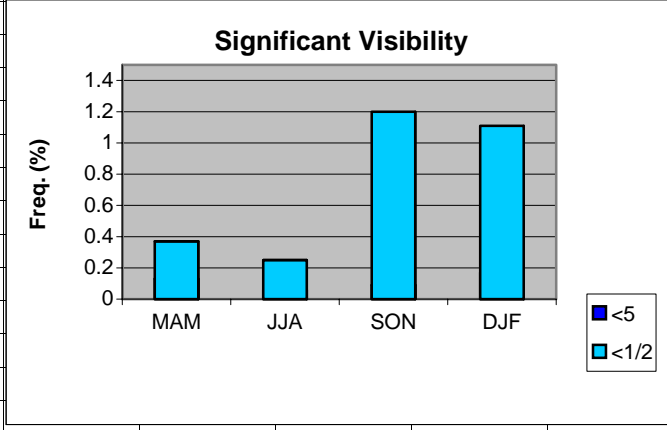
Comment: Charlie Liles:

The first graph shows the seasonal average hourly daily frequency of thunderstorms at the station and within 50 miles. The second graph shows the seasonal average daily probability of thunderstorms within 50 miles of the station.

	A	B	C	D	E	F	G	H
1	Ceilings							
2		MAM	JJA	SON	DJF			
3	<5500	30.32	16.73	20.39	19.10			
4	<200	0.18	0.08	0.68	0.68			
5								
6								
7								
8								
9								
10								
11								
12								
13								
14								
15								
16								
17								
18								
19								



	A	B	C	D	E	F	G
1	Visibility						
2		MAM	JJA	SON	DJF		
3	<5	0.13	0.06	0.09	0.17		
4	<1/2	0.37	0.25	1.20	1.11		
5							
6							
7							
8							
9							
10							
11							
12							
13							
14							
15							
16							
17							
18							
19							



Cell: A1

Comment: Charlie Liles:

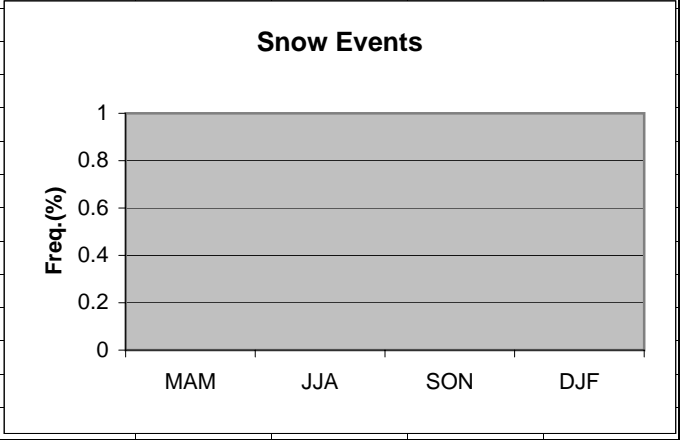
All of the <5 values on the chart are eclipsed by the <1/2 because frequencies for <1/2 are greater than <5 with wind >10kt 050-110 or >10kt 230-290.

Cell: A3

Comment: Charlie Liles:

Conditional factor, with visibility less than 5 miles and wind >10kt 050-110 or 230-290.

	A	B	C	D	E	F	G	H
1	Snow events							
2								
3	MAM	0						
4	JJA	0						
5	SON	0						
6	DJF	0						
7								
8								
9								
10								
11								
12								
13								
14								
15								
16								
17								
18								
19								



	A	B	C	D	E	F	G	H
1	Freezing Rain/drizzle/Ice Pellets							
2								
3	MAM	0						
4	JJA	0						
5	SON	0						
6	DJF	0.01						
7								
8								
9								
10								
11								
12								
13								
14								
15								
16								
17								
18								
19								

