

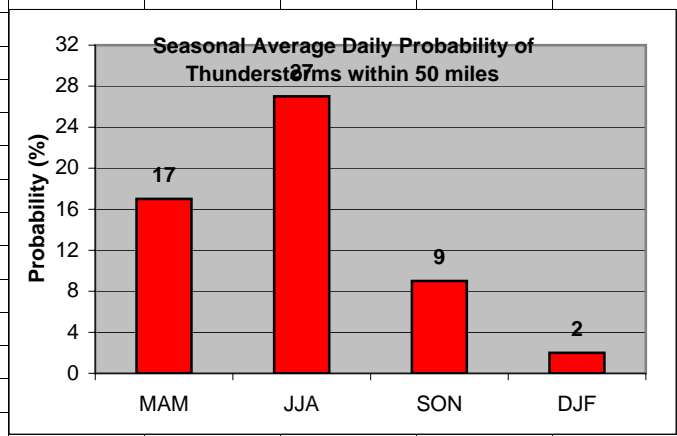
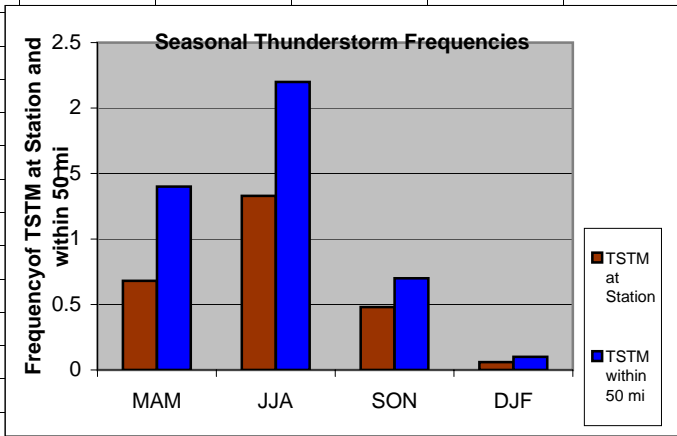
	A	B	C	D	E	F	G	H										
1	MDW	Wind																
2																		
3	MAM	52.47																
4	JJA	33.08																
5	SON	42.80																
6	DJF	51.91																
7				<div data-bbox="945 695 1612 1123" data-label="Figure"> <p style="text-align: center;"><b>Significant Wind</b></p> <table border="1"> <caption>Data for Significant Wind Chart</caption> <thead> <tr> <th>Season</th> <th>Frequency (%)</th> </tr> </thead> <tbody> <tr> <td>MAM</td> <td>52.47</td> </tr> <tr> <td>JJA</td> <td>33.08</td> </tr> <tr> <td>SON</td> <td>42.80</td> </tr> <tr> <td>DJF</td> <td>51.91</td> </tr> </tbody> </table> </div>					Season	Frequency (%)	MAM	52.47	JJA	33.08	SON	42.80	DJF	51.91
Season	Frequency (%)																	
MAM	52.47																	
JJA	33.08																	
SON	42.80																	
DJF	51.91																	
8																		
9																		
10																		
11																		
12																		
13																		
14																		
15																		
16																		
17																		
18																		
19																		
20																		

**Cell:** B1

**Comment:** Charlie Liles:

Airport has many break points on wind. Significant wind factor: >10kt from any direction.

	A	B	C	D	E	F	G	H	I	J	K
1	Thunderstorms										
2		Station	50 mi			Daily Probability					
3	MAM	0.68	1.40		MAM	17					
4	JJA	1.33	2.20		JJA	27					
5	SON	0.48	0.70		SON	9					
6	DJF	0.06	0.10		DJF	2					
7											
8											
9											
10											
11											
12											
13											
14											
15											
16											
17											
18											
19											
20											



**Cell:** A1

**Comment:** Charlie Liles:

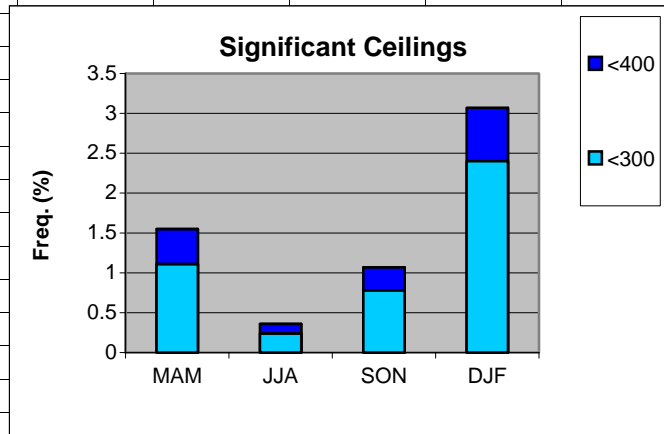
The first graph shows the seasonal average hourly daily frequencies of thunderstorms at the station and within 50 miles. The second graph shows the seasonal average daily probability of thunderstorms within 50 miles of the station.

**Cell:** C2

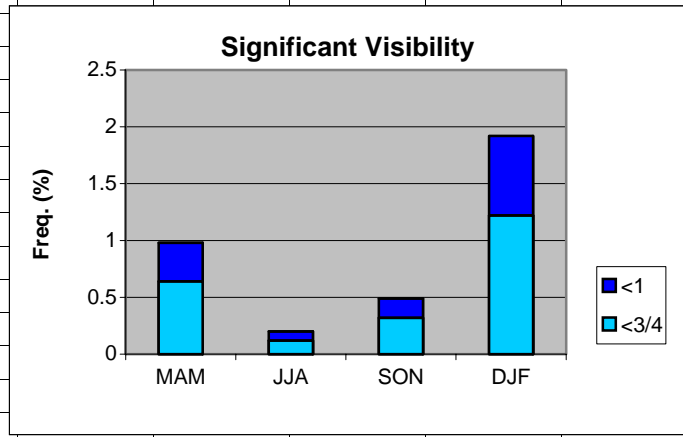
**Comment:** Charlie Liles:

Unless thunderstorm frequency between two hubs in the same metropolitan area was found to be significantly different, lightning values for the major hub were used. The 50 mile radius values are for ORD.

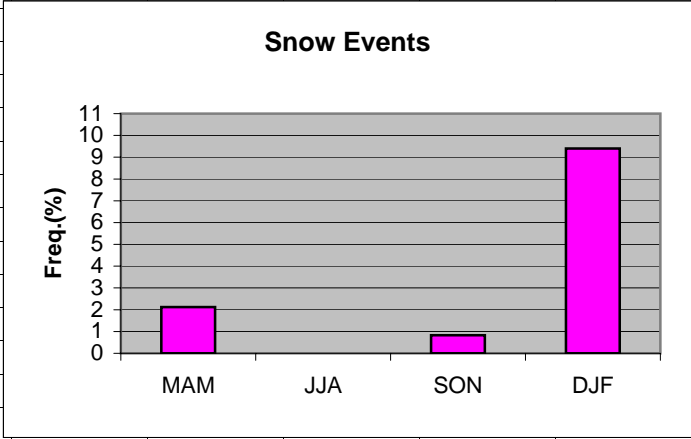
	A	B	C	D	E	F	G	H
1	Ceilings							
2		MAM	JJA	SON	DJF			
3	<400	1.55	0.36	1.07	3.07			
4	<300	1.11	0.24	0.78	2.40			
5								
6								
7								
8								
9								
10								
11								
12								
13								
14								
15								
16								
17								
18								
19								



	A	B	C	D	E	F	G	H
1	Visibility							
2		MAM	JJA	SON	DJF			
3	<1	0.98	0.2	0.49	1.92			
4	<3/4	0.64	0.12	0.32	1.22			
5								
6								
7								
8								
9								
10								
11								
12								
13								
14								
15								
16								
17								
18								
19								



	A	B	C	D	E	F	G	H	I
1	Snow events								
2									
3	MAM	2.12							
4	JJA	0							
5	SON	0.83							
6	DJF	9.40							
7									
8									
9									
10									
11									
12									
13									
14									
15									
16									
17									
18									
19									



	A	B	C	D	E	F	G	H
1	Freezing Rain/drizzle/Ice Pellets							
2								
3	MAM	0.19						
4	JJA	0						
5	SON	0.03						
6	DJF	0.81						
7								
8								
9								
10								
11								
12								
13								
14								
15								
16								
17								
18								
19								

