

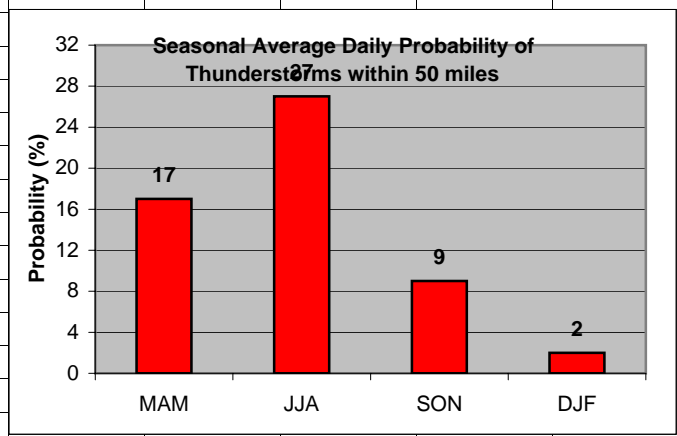
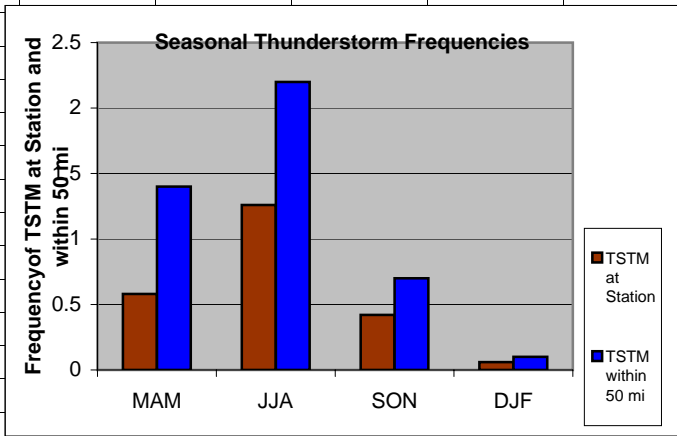
	A	B	C	D	E	F	G	H										
1	ORD	Wind																
2																		
3	MAM	49.62																
4	JJA	26.57																
5	SON	37.80																
6	DJF	48.59																
7				<div data-bbox="945 695 1612 1123" data-label="Figure"> <p style="text-align: center;">Significant Wind</p> <table border="1"> <caption>Significant Wind Frequency Data</caption> <thead> <tr> <th>Season</th> <th>Frequency (%)</th> </tr> </thead> <tbody> <tr> <td>MAM</td> <td>49.62</td> </tr> <tr> <td>JJA</td> <td>26.57</td> </tr> <tr> <td>SON</td> <td>37.80</td> </tr> <tr> <td>DJF</td> <td>48.59</td> </tr> </tbody> </table> </div>					Season	Frequency (%)	MAM	49.62	JJA	26.57	SON	37.80	DJF	48.59
Season	Frequency (%)																	
MAM	49.62																	
JJA	26.57																	
SON	37.80																	
DJF	48.59																	
8																		
9																		
10																		
11																		
12																		
13																		
14																		
15																		
16																		
17																		
18																		
19																		
20																		

Cell: B1

Comment: Charlie Liles:

Airport has many break points on wind. Significant wind factor: >10kt from any direction.

	A	B	C	D	E	F	G	H	I	J	K
1	Thunderstorms										
2		Station	50 mi			Daily Probability					
3	MAM	0.58	1.40		MAM	17					
4	JJA	1.26	2.20		JJA	27					
5	SON	0.42	0.70		SON	9					
6	DJF	0.06	0.10		DJF	2					
7											
8											
9											
10											
11											
12											
13											
14											
15											
16											
17											
18											
19											
20											

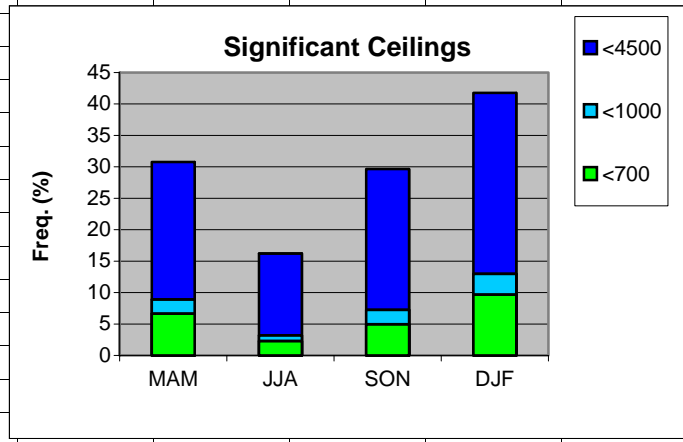


Cell: A1

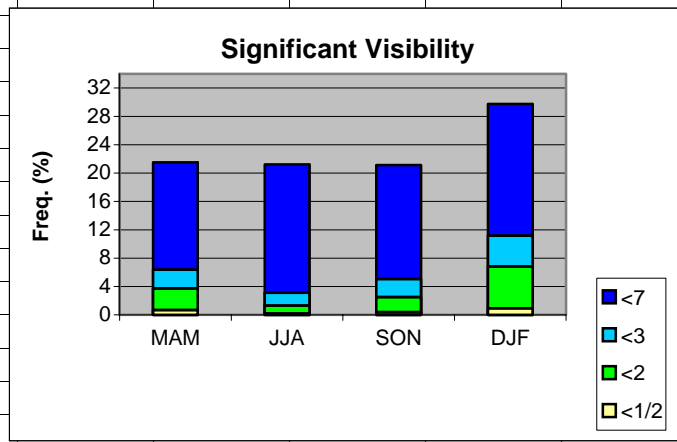
Comment: Charlie Liles:

The first graph shows the seasonal average hourly daily frequencies of thunderstorms at the station and within 50 miles. The second graph shows the seasonal average daily probability of thunderstorms within 50 miles of the station.

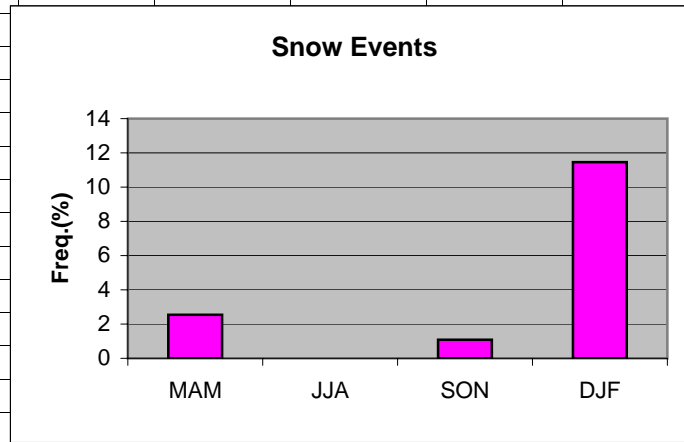
	A	B	C	D	E	F	G	H
1	Ceilings							
2		MAM	JJA	SON	DJF			
3	<4500	30.76	16.21	29.66	41.76			
4	<1000	8.91	3.22	7.25	12.98			
5	<700	6.66	2.31	4.97	9.68			
6								
7								
8								
9								
10								
11								
12								
13								
14								
15								
16								
17								
18								
19								



	A	B	C	D	E	F	G	H
1	Visibility							
2		MAM	JJA	SON	DJF			
3	<7	21.52	21.23	21.13	29.76			
4	<3	6.36	3.13	5.07	11.18			
5	<2	3.74	1.31	2.50	6.83			
6	<1/2	0.69	0.20	0.40	0.93			
7								
8								
9								
10								
11								
12								
13								
14								
15								
16								
17								
18								
19								
20								
21								



	A	B	C	D	E	F	G	H	I
1	Snow events								
2									
3	MAM	2.54							
4	JJA	0							
5	SON	1.08							
6	DJF	11.46							
7									
8									
9									
10									
11									
12									
13									
14									
15									
16									
17									
18									
19									



	A	B	C	D	E	F	G	H
1	Freezing Rain/drizzle/Ice Pellets							
2								
3	MAM	0.22						
4	JJA	0						
5	SON	0.02						
6	DJF	0.82						
7								
8								
9								
10								
11								
12								
13								
14								
15								
16								
17								
18								
19								

