

	A	B	C	D	E	F	G										
1	Wind																
2																	
3	MAM	0.37															
4	JJA	0.02															
5	SON	0.10															
6	DJF	0.31															
7																	
8			<p style="text-align: center;">Significant Wind</p> <table border="1"> <caption>Data for Significant Wind Bar Chart</caption> <thead> <tr> <th>Season</th> <th>Freq. (%)</th> </tr> </thead> <tbody> <tr> <td>MAM</td> <td>0.37</td> </tr> <tr> <td>JJA</td> <td>0.02</td> </tr> <tr> <td>SON</td> <td>0.10</td> </tr> <tr> <td>DJF</td> <td>0.31</td> </tr> </tbody> </table>					Season	Freq. (%)	MAM	0.37	JJA	0.02	SON	0.10	DJF	0.31
Season	Freq. (%)																
MAM	0.37																
JJA	0.02																
SON	0.10																
DJF	0.31																
9																	
10																	
11																	
12																	
13																	
14																	
15																	
16																	
17																	
18																	
19																	
20																	
21																	

Cell: A1

Comment: Charlie Liles:

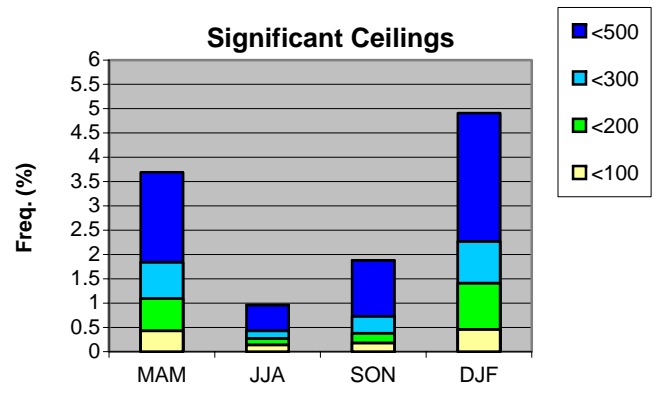
Significant wind factor: >20kt 280-320.

Cell: A1

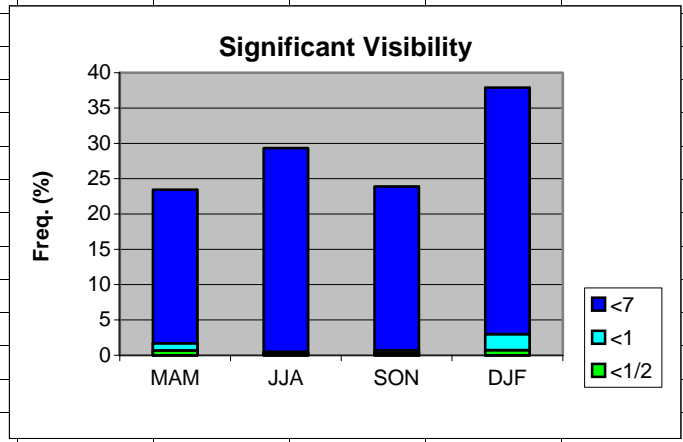
Comment: Charlie Liles:

The first graph shows the seasonal average hourly daily frequencies of thunderstorms at the station and within 50 miles. The second graph shows the seasonal average daily probability of thunderstorms within 50 miles of the station.

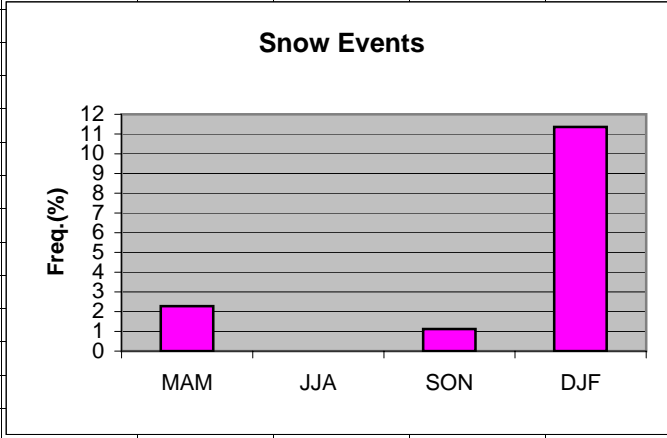
	A	B	C	D	E	F	G	H
1	Ceilings							
2		MAM	JJA	SON	DJF			
3	<500	3.69	0.96	1.88	4.91			
4	<300	1.84	0.43	0.73	2.27			
5	<200	1.09	0.27	0.38	1.41			
6	<100	0.43	0.14	0.18	0.46			
7								
8								
9								
10								
11								
12								
13								
14								
15								
16								
17								
18								
19								
20								
21								



	A	B	C	D	E	F	G	H
1	Visibility							
2		MAM	JJA	SON	DJF			
3	<7	23.45	29.33	23.89	37.90			
4	<1	1.69	0.47	0.67	2.99			
5	<1/2	0.66	0.24	0.27	0.72			
6								
7								
8								
9								
10								
11								
12								
13								
14								
15								
16								
17								
18								
19								



	A	B	C	D	E	F	G	H
1	Snow events							
2								
3	MAM	2.28						
4	JJA	0						
5	SON	1.12						
6	DJF	11.36						
7								
8								
9								
10								
11								
12								
13								
14								
15								
16								
17								
18								
19								



	A	B	C	D	E	F	G	H
1	Freezing Rain/drizzle/Ice Pellets							
2								
3	MAM	0.24						
4	JJA	0						
5	SON	0.05						
6	DJF	0.81						
7								
8								
9								
10								
11								
12								
13								
14								
15								
16								
17								
18								
19								

