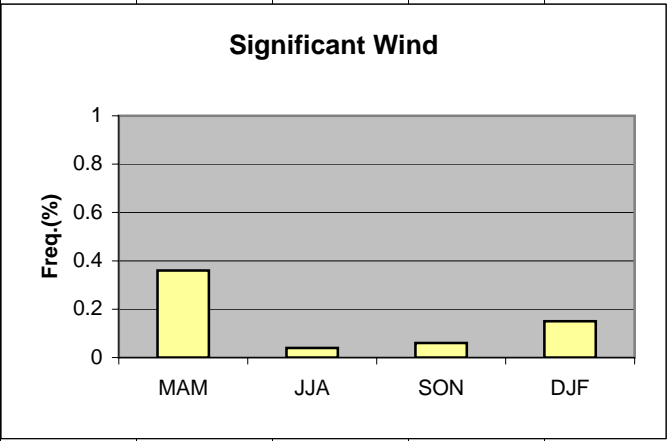


	A	B	C	D	E	F	G	H	I	J	K
1	Wind										
2											
3	MAM	0.36									
4	JJA	0.04									
5	SON	0.06									
6	DJF	0.15									
7											
8			MAM	JJA	SON	DJF					
9	>20kt 180-210		0.34	0.04	0.06	0.13					
10	>30kt 240-300		0.02	0	0	0.02					
11											
12											
13											
14											
15											
16											
17											
18											
19											
20											



Cell: A1

Comment: Charlie Liles:

Significant wind factors: >20kt 180-210 or >30kt 240-300.

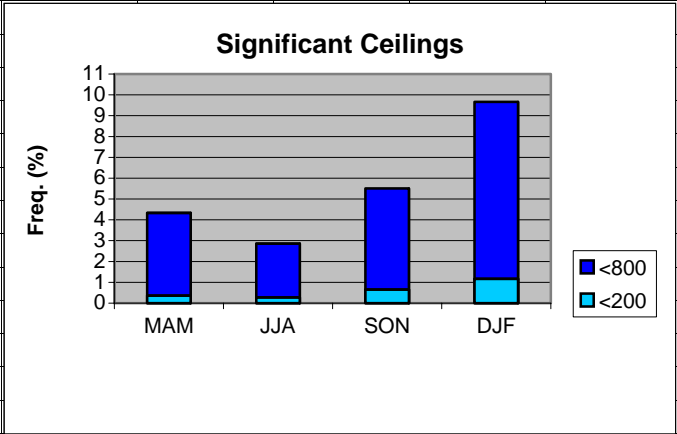
	A	B	C	D	E	F	G	H	I	J	K
1	Thunderstorms										
2		Station	50 mi			Daily Probability					
3	MAM	0.79	1.50		MAM	19					
4	JJA	1.54	2.70		JJA	31					
5	SON	0.3	0.50		SON	7					
6	DJF	0.05	0.10		DJF	3					
7											
8											
9											
10											
11											
12											
13											
14											
15											
16											
17											
18											
19											
20											

Cell: A1

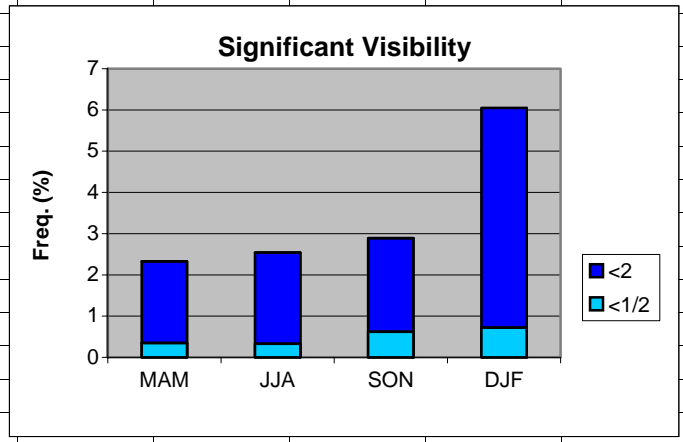
Comment: Charlie Liles:

The first graph shows the seasonal average hourly daily frequencies of thunderstorms at the station and within 50 miles. The second graph shows the seasonal average daily probability of thunderstorms within 50 miles of the station.

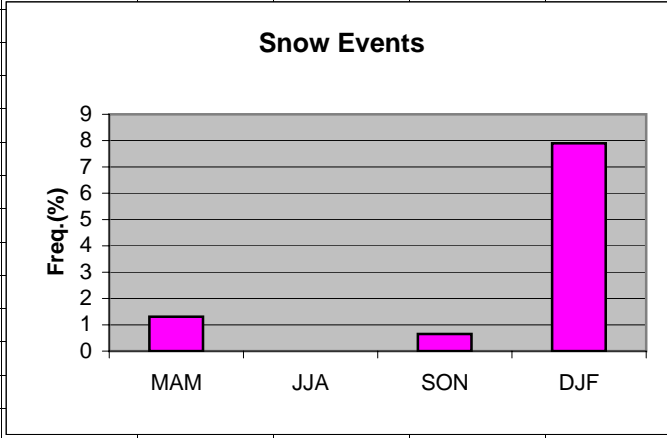
	A	B	C	D	E	F	G	H
1	Ceilings							
2		MAM	JJA	SON	DJF			
3	<800	4.33	2.86	5.51	9.66			
4	<200	0.36	0.28	0.65	1.17			
5								
6								
7								
8								
9								
10								
11								
12								
13								
14								
15								
16								
17								
18								
19								



	A	B	C	D	E	F	G	H
1	Visibility							
2		MAM	JJA	SON	DJF			
3	<2	2.33	2.54	2.89	6.05			
4	<1/2	0.35	0.33	0.62	0.72			
5								
6								
7								
8								
9								
10								
11								
12								
13								
14								
15								
16								
17								
18								
19								



	A	B	C	D	E	F	G	H
1	Snow events							
2								
3	MAM	1.31						
4	JJA	0						
5	SON	0.65						
6	DJF	7.90						
7								
8								
9								
10								
11								
12								
13								
14								
15								
16								
17								
18								
19								



	A	B	C	D	E	F	G	H
1	Freezing Rain/drizzle/Ice Pellets							
2								
3	MAM	0.15						
4	JJA	0						
5	SON	0.04						
6	DJF	0.85						
7								
8								
9								
10								
11								
12								
13								
14								
15								
16								
17								
18								
19								

