

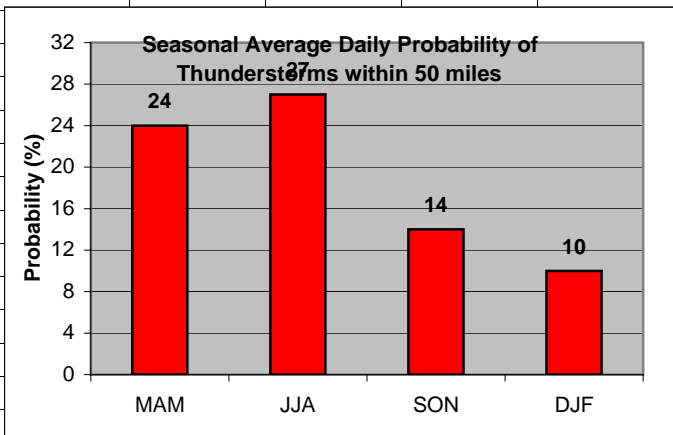
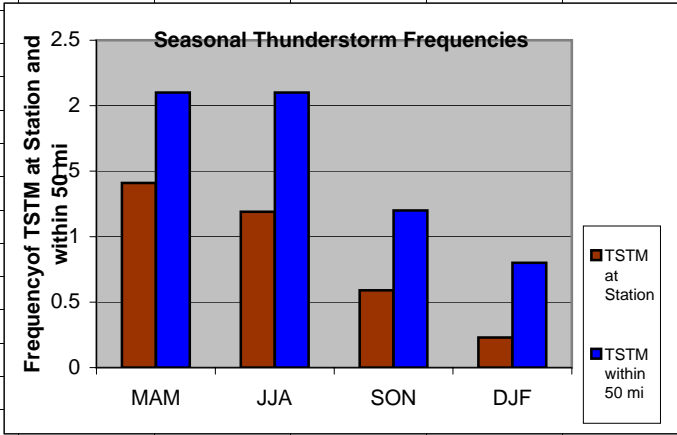
	A	B	C	D	E	F	G										
1	Wind																
2																	
3	MAM	0.31															
4	JJA	0.05															
5	SON	0.04															
6	DJF	0.30															
7																	
8			<div data-bbox="877 711 1533 1140" data-label="Figure"> <p>Significant Wind</p> <table border="1"> <thead> <tr> <th>Season</th> <th>Freq.(%)</th> </tr> </thead> <tbody> <tr> <td>MAM</td> <td>0.31</td> </tr> <tr> <td>JJA</td> <td>0.05</td> </tr> <tr> <td>SON</td> <td>0.04</td> </tr> <tr> <td>DJF</td> <td>0.30</td> </tr> </tbody> </table> </div>					Season	Freq.(%)	MAM	0.31	JJA	0.05	SON	0.04	DJF	0.30
Season	Freq.(%)																
MAM	0.31																
JJA	0.05																
SON	0.04																
DJF	0.30																
9																	
10																	
11																	
12																	
13																	
14																	
15																	
16																	
17																	
18																	
19																	
20																	
21																	

Cell: A1

Comment: Charlie Liles:

Significant wind factor: >25kt any direction.

	A	B	C	D	E	F	G	H	I	J	K	L
1	Thunderstorms											
2		Station	50 mi		Daily Probability							
3	MAM	1.41	2.10		MAM	24						
4	JJA	1.19	2.10		JJA	27						
5	SON	0.59	1.20		SON	14						
6	DJF	0.23	0.80		DJF	10						
7												
8												
9												
10												
11												
12												
13												
14												
15												
16												
17												
18												
19												
20												
21												



Cell: A1

Comment: Charlie Liles:

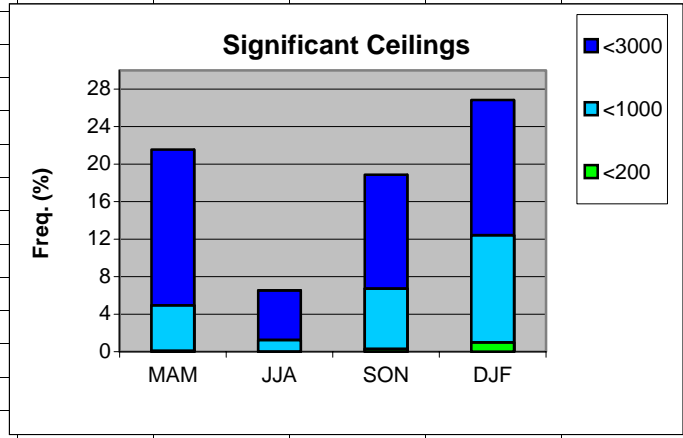
The first graph shows the seasonal average hourly daily frequencies of thunderstorms at the station and within 50 miles. The second graph shows the seasonal average daily probability of thunderstorms within 50 miles of the station.

Cell: C2

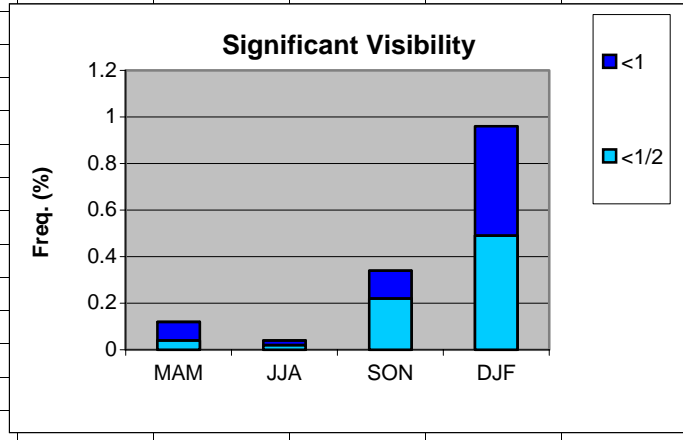
Comment: Charlie Liles:

Unless thunderstorm frequency between two hubs in the same metropolitan area was found to be significantly different, lightning values for the major hub were used. The 50 mile radius values are for DFW.

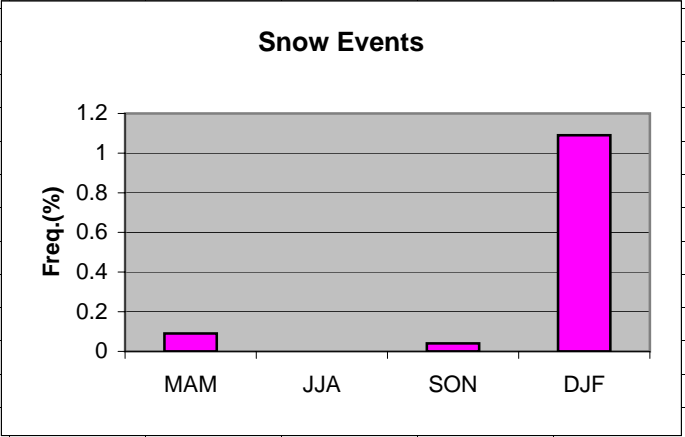
	A	B	C	D	E	F	G	H
1	Ceilings							
2		MAM	JJA	SON	DJF			
3	<3000	21.55	6.54	18.87	26.83			
4	<1000	4.95	1.25	6.73	12.42			
5	<200	0.10	0.01	0.30	0.99			
6								
7								
8								
9								
10								
11								
12								
13								
14								
15								
16								
17								
18								
19								



	A	B	C	D	E	F	G	H
1	Visibility							
2		MAM	JJA	SON	DJF			
3	<1	0.12	0.04	0.34	0.96			
4	<1/2	0.04	0.02	0.22	0.49			
5								
6								
7								
8								
9								
10								
11								
12								
13								
14								
15								
16								
17								
18								
19								



	A	B	C	D	E	F	G	H
1	Snow events							
2								
3	MAM	0.09						
4	JJA	0						
5	SON	0.04						
6	DJF	1.09						
7								
8								
9								
10								
11								
12								
13								
14								
15								
16								
17								
18								
19								



	A	B	C	D	E	F	G	H
1	Freezing Rain/drizzle/Ice Pellets							
2								
3	MAM	0.03						
4	JJA	0						
5	SON	0.01						
6	DJF	0.85						
7								
8								
9								
10								
11								
12								
13								
14								
15								
16								
17								
18								
19								
20								

