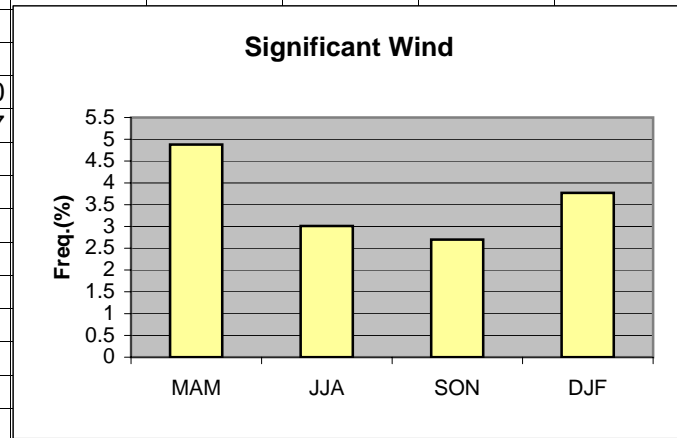


	A	B	C	D	E	F	G	H	I	J	K
1	Wind										
2											
3	MAM	4.88									
4	JJA	3.01									
5	SON	2.70									
6	DJF	3.77									
7											
8			MAM	JJA	SON	DJF					
9	>10kt 240-290		2.44	0.70	1.17	2.50					
10	>10kt 070-110		2.44	2.31	1.53	1.27					
11											
12											
13											
14											
15											
16											
17											
18											
19											

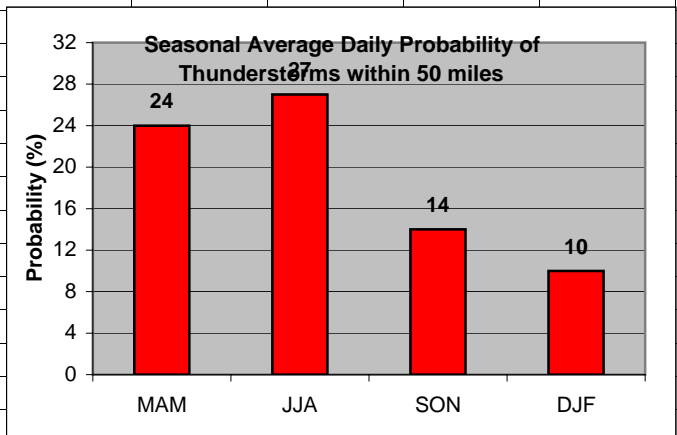
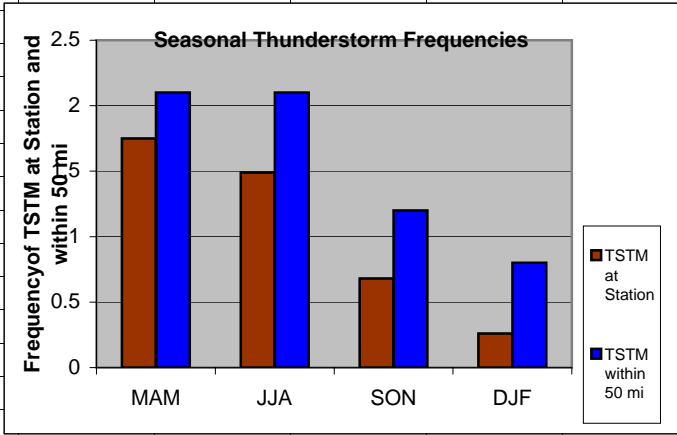


**Cell:** A1

**Comment:** Charlie Liles:

Significant wind factors: >10kt 240-290, >10kt 070-110.

	A	B	C	D	E	F	G	H	I	J	K	L
1	Thunderstorms											
2		Station	50 mi		Daily Probability							
3	MAM	1.75	2.10		MAM	24						
4	JJA	1.49	2.10		JJA	27						
5	SON	0.68	1.20		SON	14						
6	DJF	0.26	0.80		DJF	10						
7												
8												
9												
10												
11												
12												
13												
14												
15												
16												
17												
18												
19												
20												
21												

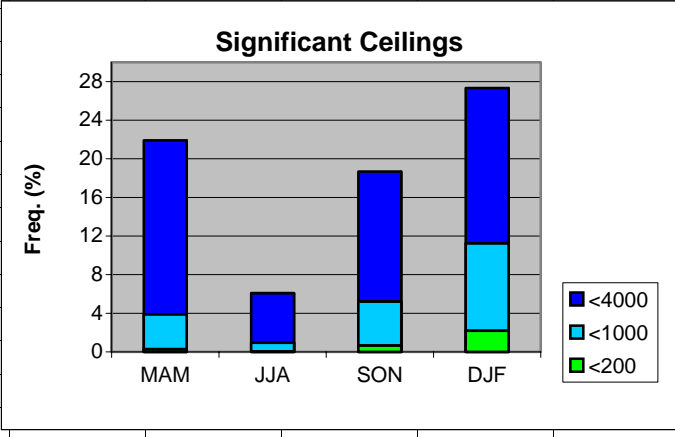


**Cell:** A1

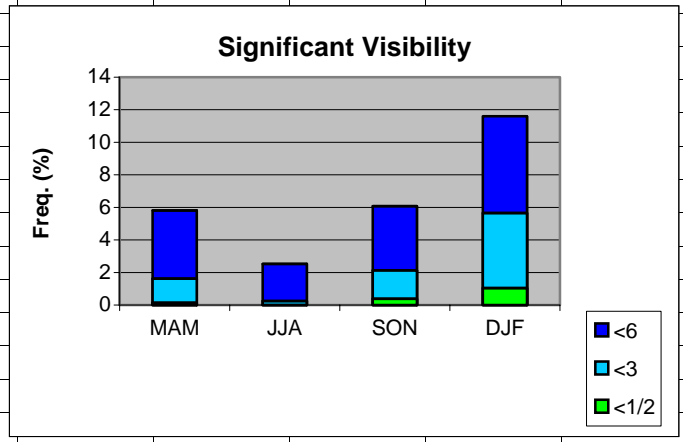
**Comment:** Charlie Liles:

The first graph shows the seasonal average hourly daily frequencies of thunderstorms at the station and within 50 miles. The second graph shows the seasonal average daily probability of thunderstorms within 50 miles of the station.

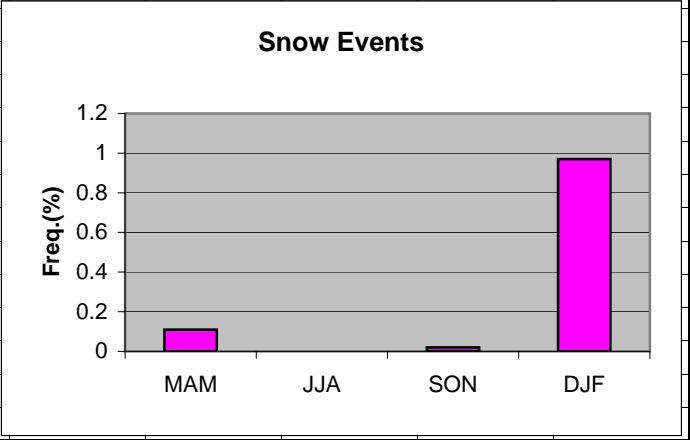
	A	B	C	D	E	F	G	H
1	Ceilings							
2		MAM	JJA	SON	DJF			
3	<4000	21.91	6.08	18.68	27.33			
4	<1000	3.89	0.94	5.22	11.26			
5	<200	0.29	0.02	0.67	2.19			
6								
7								
8								
9								
10								
11								
12								
13								
14								
15								
16								
17								
18								
19								



	A	B	C	D	E	F	G	H
1	Visibility							
2		MAM	JJA	SON	DJF			
3	<6	5.81	2.53	6.08	11.6			
4	<3	1.62	0.25	2.13	5.65			
5	<1/2	0.14	0	0.38	1.04			
6								
7								
8								
9								
10								
11								
12								
13								
14								
15								
16								
17								
18								
19								



	A	B	C	D	E	F	G	H
1	Snow events							
2								
3	MAM	0.11						
4	JJA	0						
5	SON	0.02						
6	DJF	0.97						
7								
8								
9								
10								
11								
12								
13								
14								
15								
16								
17								
18								
19								



	A	B	C	D	E	F	G	H
1	Freezing Rain/drizzle/Ice Pellets							
2								
3	MAM	0.01						
4	JJA	0						
5	SON	0						
6	DJF	0.70						
7								
8								
9								
10								
11								
12								
13								
14								
15								
16								
17								
18								
19								
20								

