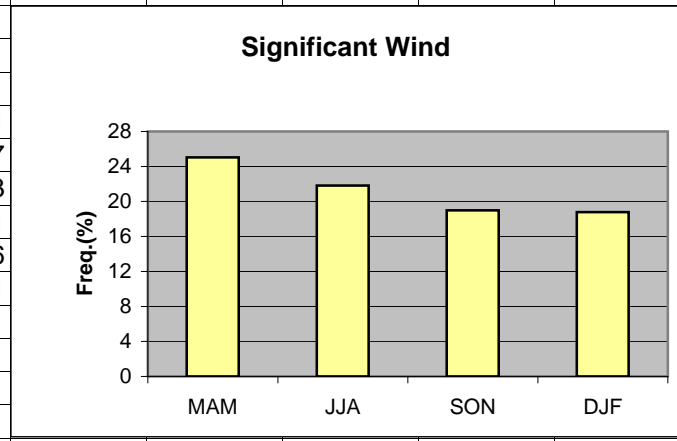


	A	B	C	D	E	F	G	H	I	J	K
1	Wind										
2											
3	MAM	25.04									
4	JJA	21.82									
5	SON	18.98									
6	DJF	18.79									
7											
8											
9			MAM	JJA	SON	DJF					
10	>8kt 330-030		11.57	7.60	7.44	6.61					
11	>8kt 150-210		13.08	14.15	11.40	11.77					
12	>20kt 260-280		0.32	0.05	0.11	0.33					
13	>25kt 240-250		0	0	0	0.01					
14	>25kt 290-300		0.07	0.01	0.02	0.06					
15	>50kt any direction		0	0.01	0.01	0.01					
16											
17											
18											
19											
20											

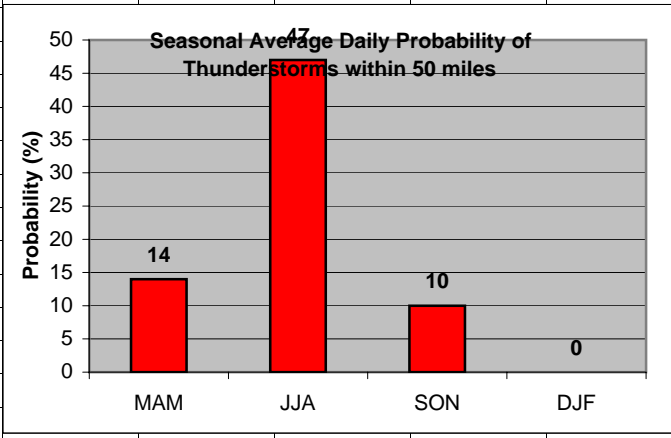
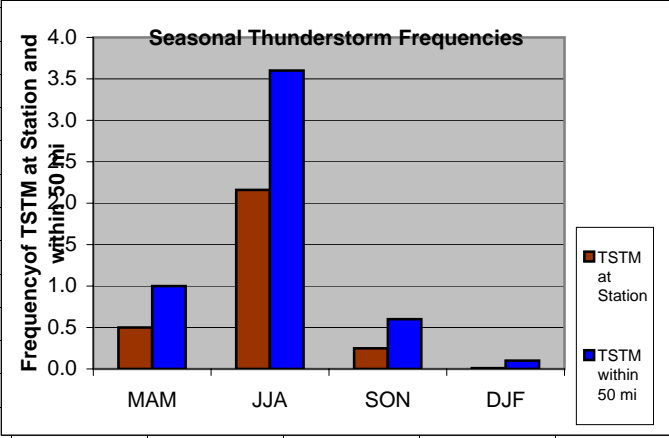


**Cell:** A1

**Comment:** Charlie Liles:

Significant wind factors: >8kt 330-030, >8kt 150-210, >20kt 260-280, >25kt 240-250, >25kt 290-300, >50kt any direction.

	A	B	C	D	E	F	G	H	I	J	K
1	Thunderstorms										
2		Station	50 mi			Daily Probability					
3	MAM	0.50	1.00		MAM	14					
4	JJA	2.16	3.60		JJA	47					
5	SON	0.25	0.60		SON	10					
6	DJF	0.01	0.10		DJF	0					
7											
8											
9											
10											
11											
12											
13											
14											
15											
16											
17											
18											
19											
20											

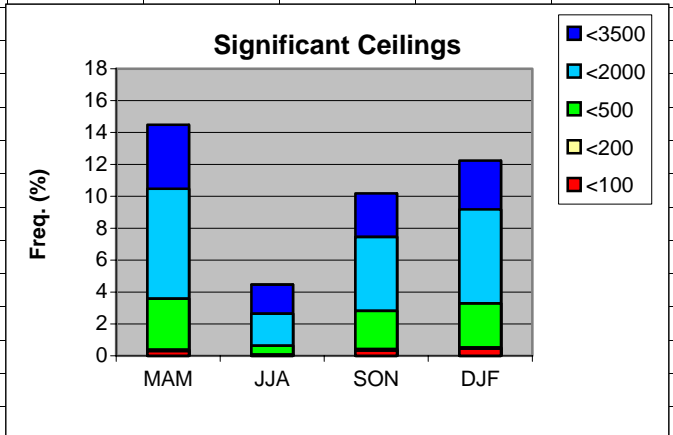


**Cell:** A1

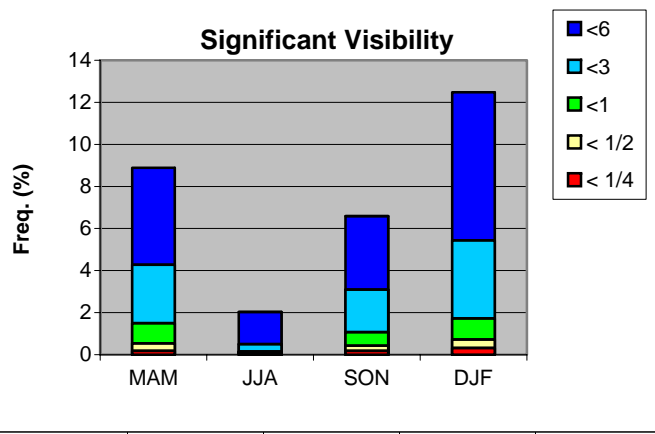
**Comment:** Charlie Liles:

The first graph shows the seasonal average hourly daily frequencies of thunderstorms at the station and within 50 miles. The second graph shows the seasonal average daily probability of thunderstorms within 50 miles of the station.

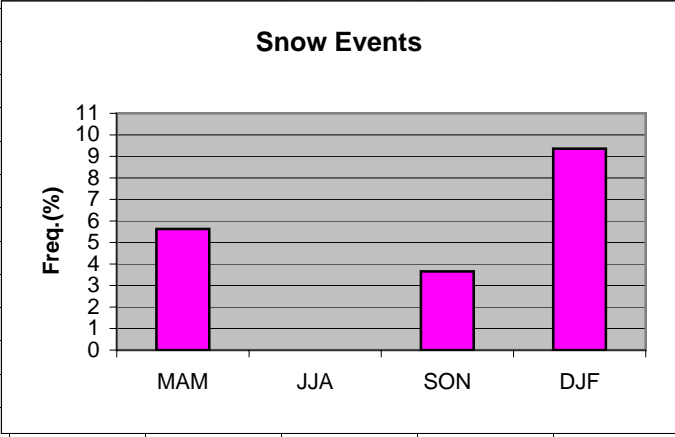
	A	B	C	D	E	F	G	H
1	Ceilings							
2		MAM	JJA	SON	DJF			
3	<3500	14.49	4.47	10.18	12.24			
4	<2000	10.47	2.64	7.46	9.18			
5	<500	3.58	0.64	2.82	3.29			
6	<200	0.38	0.07	0.42	0.52			
7	<100	0.30	0.05	0.33	0.45			
8								
9								
10								
11								
12								
13								
14								
15								
16								
17								
18								
19								
20								
21								



	A	B	C	D	E	F	G
1	Visibility						
2		MAM	JJA	SON	DJF		
3	<6	8.89	2.03	6.59	12.48		
4	<3	4.28	0.50	3.10	5.44		
5	<1	1.50	0.15	1.07	1.73		
6	< 1/2	0.54	0.12	0.43	0.72		
7	< 1/4	0.18	0.09	0.18	0.32		
8							
9							
10							
11							
12							
13							
14							
15							
16							
17							
18							
19							
20							
21							
22							



	A	B	C	D	E	F	G	H
1	Snow events							
2								
3	MAM	5.63						
4	JJA	0						
5	SON	3.66						
6	DJF	9.36						
7								
8								
9								
10								
11								
12								
13								
14								
15								
16								
17								
18								
19								



	A	B	C	D	E	F	G	H
1	Freezing Rain/drizzle/Ice Pellets							
2								
3	MAM	0.25						
4	JJA	0						
5	SON	0.19						
6	DJF	0.40						
7								
8								
9								
10								
11								
12								
13								
14								
15								
16								
17								
18								
19								

