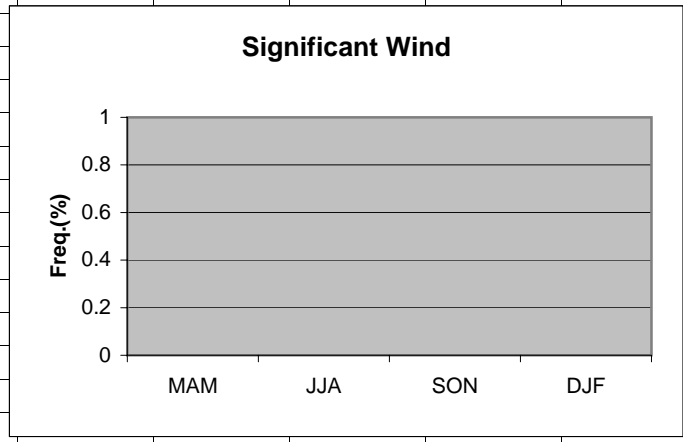


	A	B	C	D	E	F	G	H
1	Wind							
2								
3	MAM	0						
4	JJA	0						
5	SON	0						
6	DJF	0						
7								
8								
9								
10								
11								
12								
13								
14								
15								
16								
17								
18								
19								

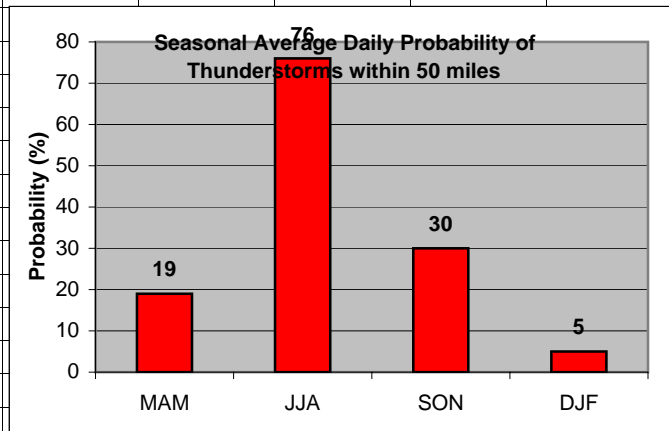
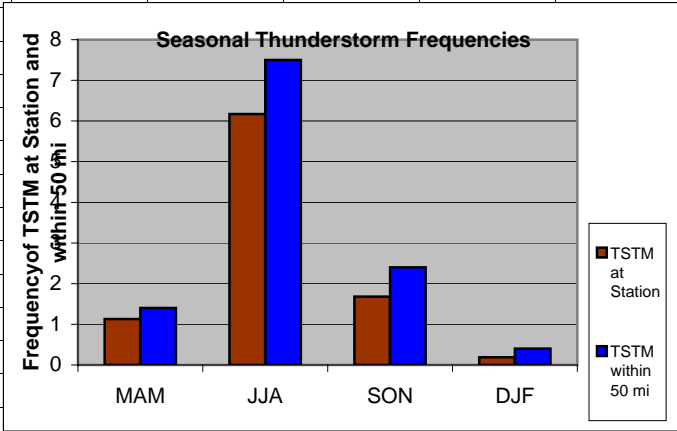


Cell: A1

Comment: Charlie Liles:

No significant wind factors were identified.

	A	B	C	D	E	F	G	H	I	J	K
1	Thunderstorms										
2		Station	50 mi			Daily Probability					
3	MAM	1.13	1.40		MAM	19					
4	JJA	6.17	7.50		JJA	76					
5	SON	1.68	2.40		SON	30					
6	DJF	0.19	0.40		DJF	5					
7											
8											
9											
10											
11											
12											
13											
14											
15											
16											
17											
18											
19											
20											



Cell: A1

Comment: Charlie Liles:

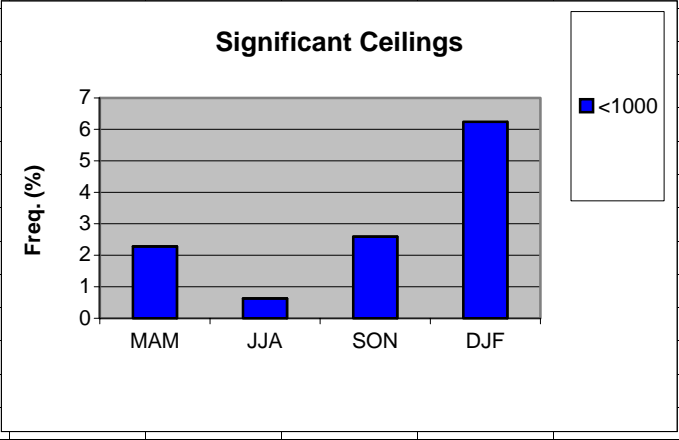
The first graph shows the seasonal average hourly daily frequencies of thunderstorms at the station and within 50 miles. The second graph shows the seasonal average daily probability of thunderstorms within 50 miles of the station.

Cell: B2

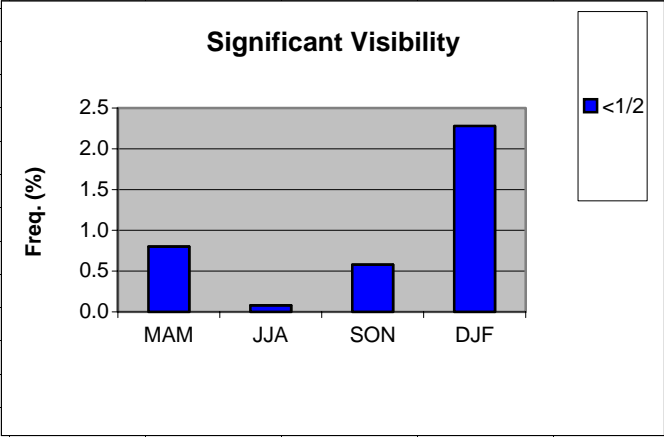
Comment: Charlie Liles:

Station thunderstorm data was not available. Values are estimated using the available lightning data and Tampa Bay station-lightning data relationship.

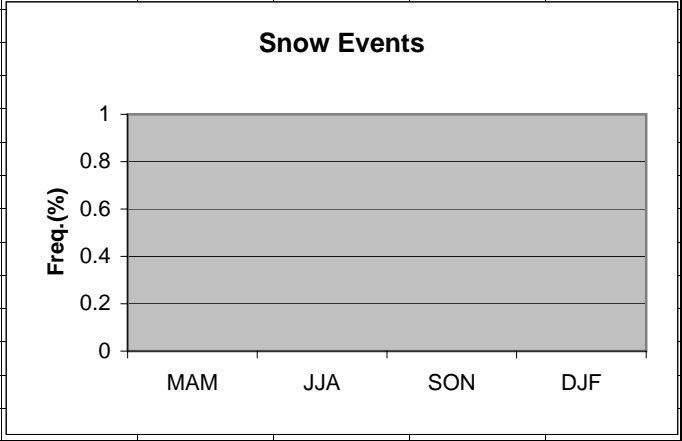
	A	B	C	D	E	F	G	H
1	Ceilings							
2		MAM	JJA	SON	DJF			
3	<1000	2.28	0.63	2.59	6.24			
4								
5								
6								
7								
8								
9								
10								
11								
12								
13								
14								
15								
16								
17								
18								
19								



	A	B	C	D	E	F	G	H
1	Visibility							
2		MAM	JJA	SON	DJF			
3	<1/2	0.80	0.08	0.58	2.28			
4								
5								
6								
7								
8								
9								
10								
11								
12								
13								
14								
15								
16								
17								
18								
19								



	A	B	C	D	E	F	G	H
1	Snow events							
2								
3	MAM	0						
4	JJA	0						
5	SON	0						
6	DJF	0						
7								
8								
9								
10								
11								
12								
13								
14								
15								
16								
17								
18								
19								



	A	B	C	D	E	F	G	H
1	Freezing Rain/drizzle/Ice Pellets							
2								
3	MAM	0						
4	JJA	0						
5	SON	0						
6	DJF	0						
7								
8								
9								
10								
11								
12								
13								
14								
15								
16								
17								
18								
19								

