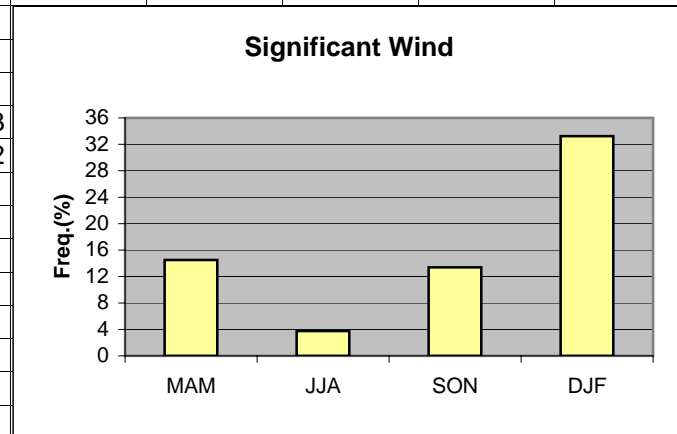


	A	B	C	D	E	F	G	H	I	J	K
1	Wind										
2											
3	MAM	14.50									
4	JJA	3.75									
5	SON	13.40									
6	DJF	33.23									
7											
8			MAM	JJA	SON	DJF					
9	>3kt 170-350		14.50	3.75	13.40	33.23					
10	>10kt 170-350		2.88	0.37	1.65	9.02					
11											
12											
13											
14											
15											
16											
17											
18											
19											

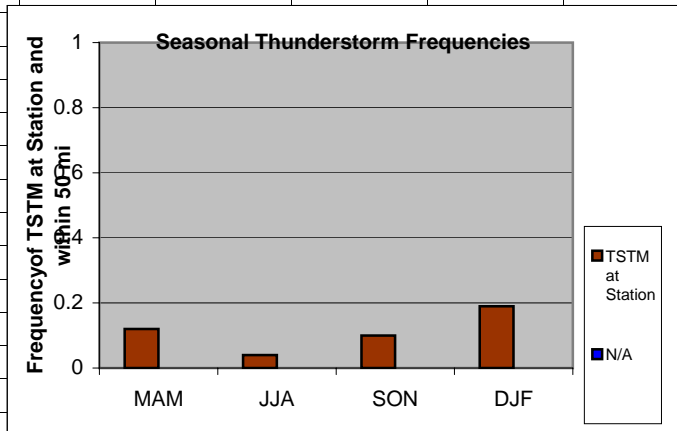


Cell: A1

Comment: Charlie Liles:

Significant wind factors" >3kt 170-350, >10kt 170-350.

	A	B	C	D	E	F
1	Thunderstorms					
2		Station	50 mi			
3	MAM	0.12	N/A			
4	JJA	0.04	N/A			
5	SON	0.1	N/A			
6	DJF	0.19	N/A			
7						
8						
9						
10						
11						
12						
13						
14						
15						
16						
17						
18						
19						
20						

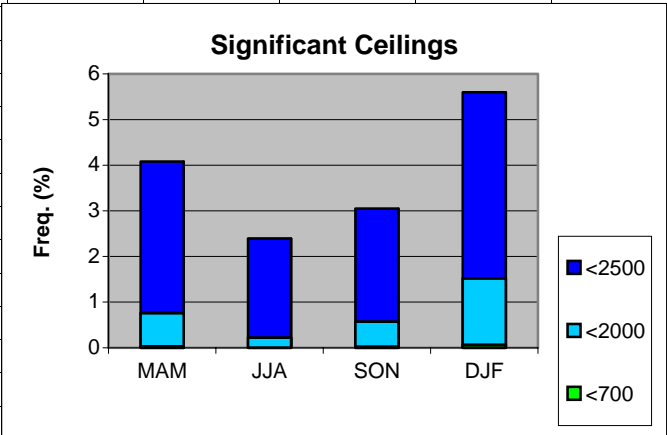


Cell: A1

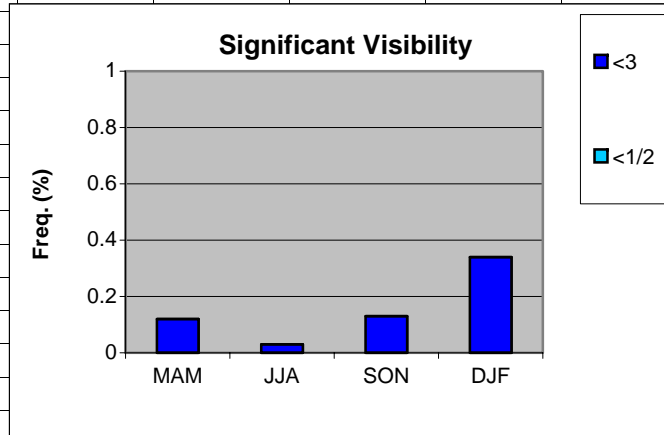
Comment: Charlie Liles:

The graph shows the seasonal average hourly frequency of thunderstorms at the station.

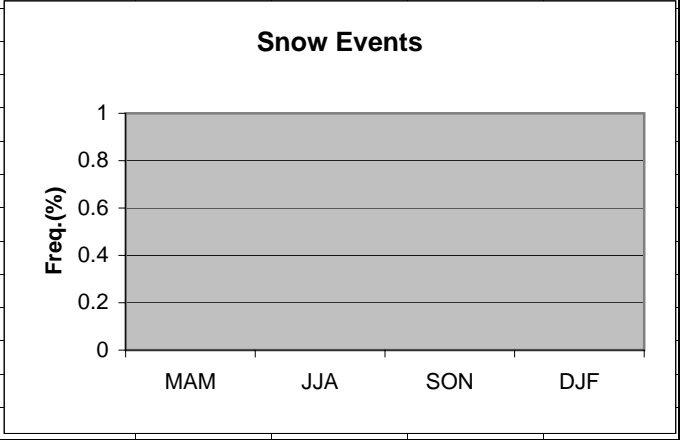
	A	B	C	D	E	F	G	H
1	Ceilings							
2								
3		MAM	JJA	SON	DJF			
4	<2500	4.08	2.39	3.05	5.60			
5	<2000	0.76	0.22	0.57	1.52			
6	<700	0.03	0	0.02	0.06			
7								
8								
9								
10								
11								
12								
13								
14								
15								
16								
17								
18								
19								
20								



	A	B	C	D	E	F	G	H
1	Visibility							
2								
3		MAM	JJA	SON	DJF			
4	<3	0.12	0.03	0.13	0.34			
5	<1/2	0	0	0	0			
6								
7								
8								
9								
10								
11								
12								
13								
14								
15								
16								
17								
18								
19								



	A	B	C	D	E	F	G	H
1	Snow events							
2								
3	MAM	0						
4	JJA	0						
5	SON	0						
6	DJF	0						
7								
8								
9								
10								
11								
12								
13								
14								
15								
16								
17								
18								
19								



	A	B	C	D	E	F	G	H
1	Freezing Rain/drizzle/Ice Pellets							
2								
3	MAM	0						
4	JJA	0						
5	SON	0						
6	DJF	0						
7								
8								
9								
10								
11								
12								
13								
14								
15								
16								
17								
18								
19								

