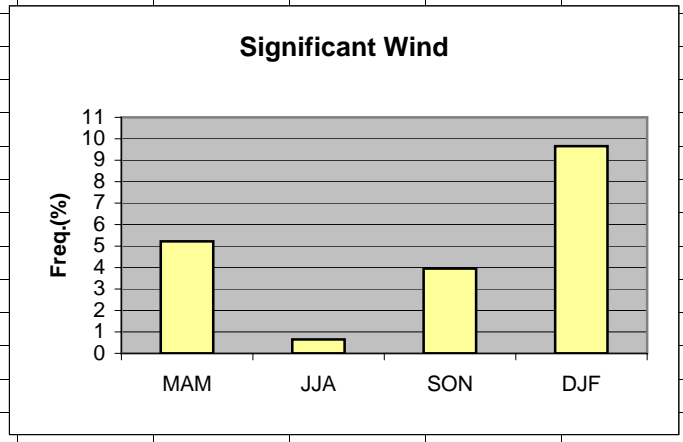


	A	B	C	D	E	F	G	H
1	Wind							
2								
3	MAM	5.22						
4	JJA	0.65						
5	SON	3.95						
6	DJF	9.66						
7								
8								
9								
10								
11								
12								
13								
14								
15								
16								
17								
18								
19								



Cell: A1

Comment: Charlie Liles:

Significant wind factor: >10kt 280-340.

Cell: A1

Comment: Charlie Liles:

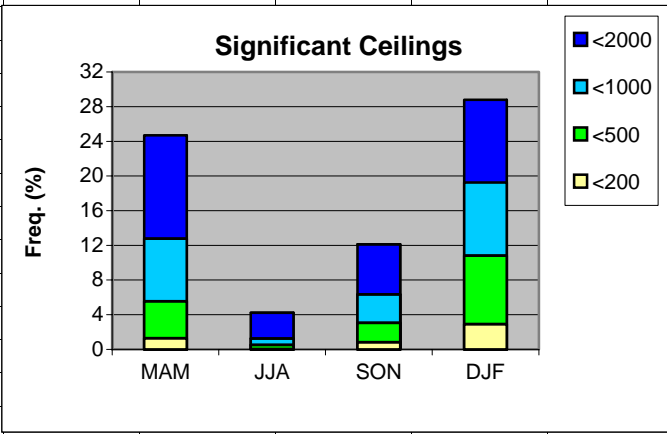
The first graph shows the seasonal average hourly daily frequency of thunderstorms at the station and within 50 miles. The second graph shows the seasonal average daily probability of thunderstorms within 50 miles of the station.

Cell: C2

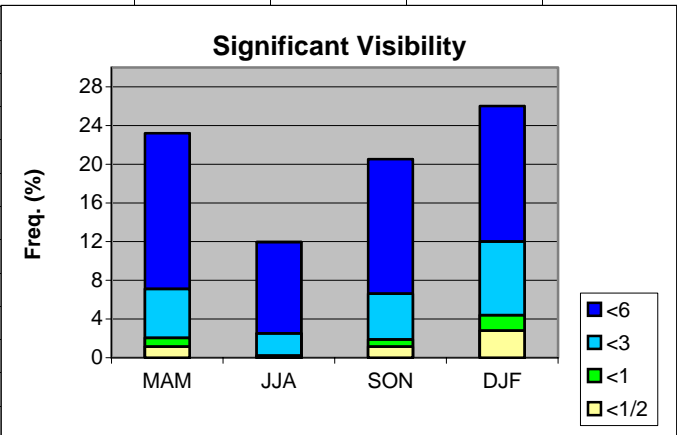
Comment: Charlie Liles:

Unless thunderstorm frequency between two hubs in the same metropolitan area was found to be significantly different, lightning values for the major hub were used. The 50 mile radius values are for IAH.

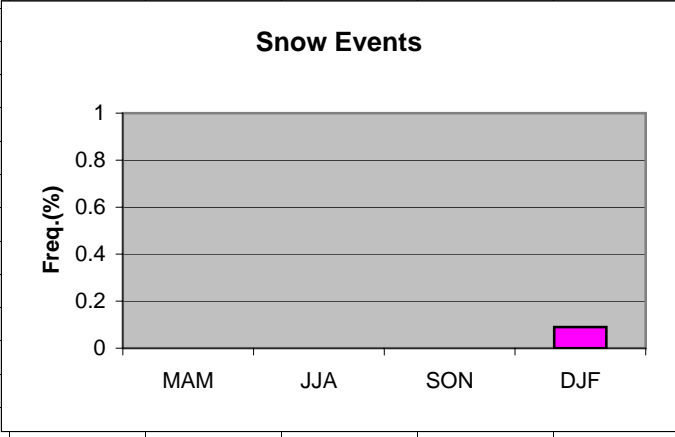
	A	B	C	D	E	F	G
1	Ceilings						
2		MAM	JJA	SON	DJF		
3	<2000	24.69	4.23	12.12	28.80		
4	<1000	12.77	1.25	6.35	19.24		
5	<500	5.56	0.51	3.06	10.82		
6	<200	1.29	0.04	0.82	2.91		
7							
8							
9							
10							
11							
12							
13							
14							
15							
16							
17							
18							
19							
20							



	A	B	C	D	E	F	G	H
1	Visibility							
2		MAM	JJA	SON	DJF			
3	<6	23.20	11.96	20.52	26.01			
4	<3	7.11	2.52	6.61	12.00			
5	<1	2.06	0.21	1.88	4.40			
6	<1/2	1.15	0.05	1.15	2.79			
7								
8								
9								
10								
11								
12								
13								
14								
15								
16								
17								
18								
19								
20								



	A	B	C	D	E	F	G	H
1	Snow Events							
2								
3	MAM	0						
4	JJA	0						
5	SON	0						
6	DJF	0.09						
7								
8								
9								
10								
11								
12								
13								
14								
15								
16								
17								
18								
19								



	A	B	C	D	E	F	G	H	I
1	Freezing Rain/drizzle/Ice Pellets								
2									
3	MAM	0.01							
4	JJA	0							
5	SON	0.02							
6	DJF	0.27							
7									
8									
9									
10									
11									
12									
13									
14									
15									
16									
17									
18									

