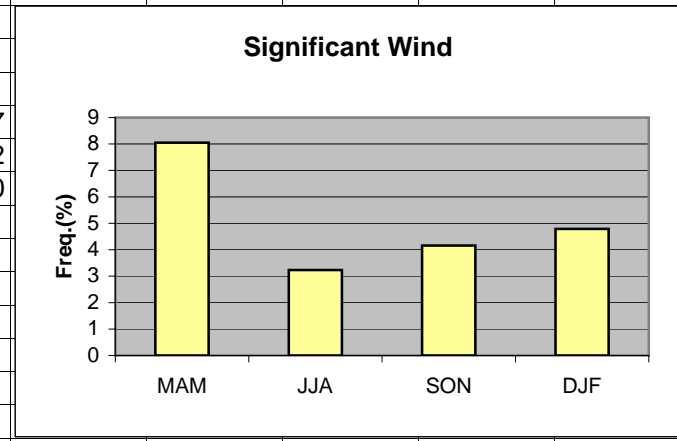


	A	B	C	D	E	F	G	H	I	J	K
1	Wind										
2											
3	MAM	8.05									
4	JJA	3.23									
5	SON	4.16									
6	DJF	4.79									
7											
8											
9			MAM	JJA	SON	DJF					
10	>12kt 030-140		8.04	3.21	4.15	4.77					
11	>25kt 330-030		0	0.01	0	0.02					
12	>25kt 160-220		0.01	0.01	0.01	0					
13											
14											
15											
16											
17											
18											
19											
20											

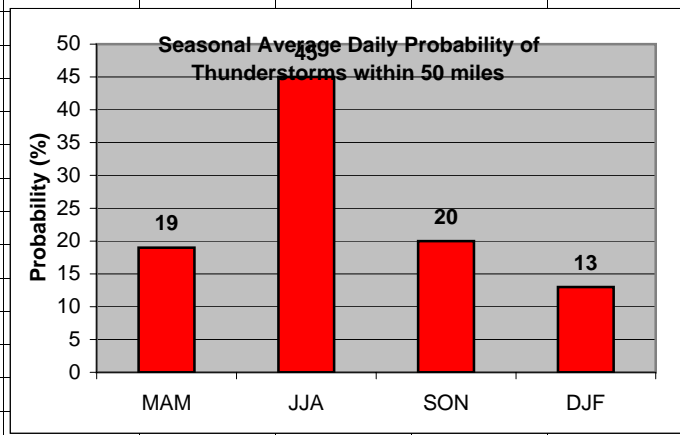
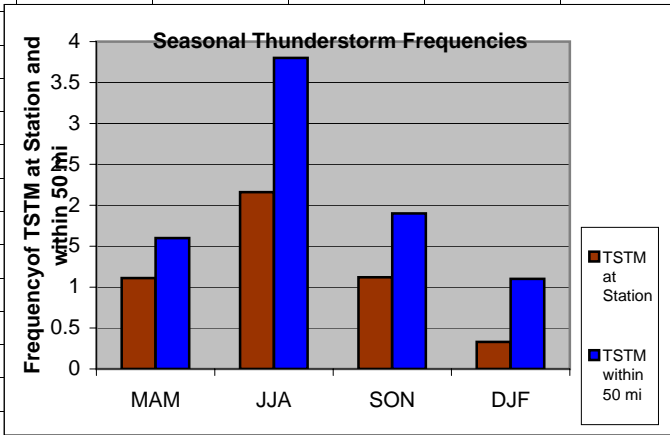


Cell: A1

Comment: Charlie Liles:

Significant wind factors: >12kt 030-140, >25kt 330-030, >25kt 160-220.

	A	B	C	D	E	F	G	H	I	J	K	L
1	Thunderstorms											
2		Station	50 mi			Daily Probability						
3	MAM	1.11	1.6		MAM	19						
4	JJA	2.16	3.8		JJA	45						
5	SON	1.12	1.9		SON	20						
6	DJF	0.33	1.1		DJF	13						
7												
8												
9												
10												
11												
12												
13												
14												
15												
16												
17												
18												
19												
20												

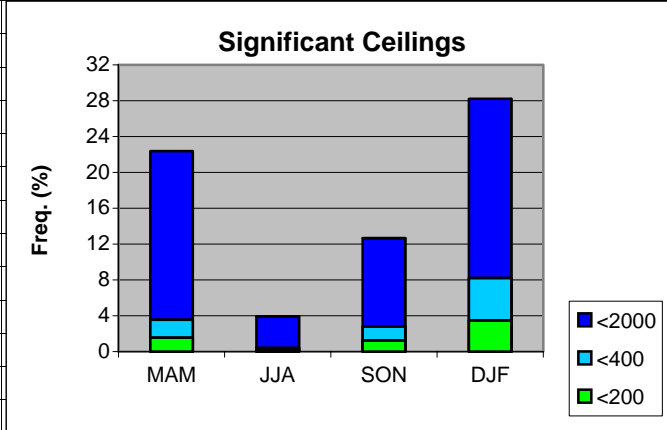


Cell: A1

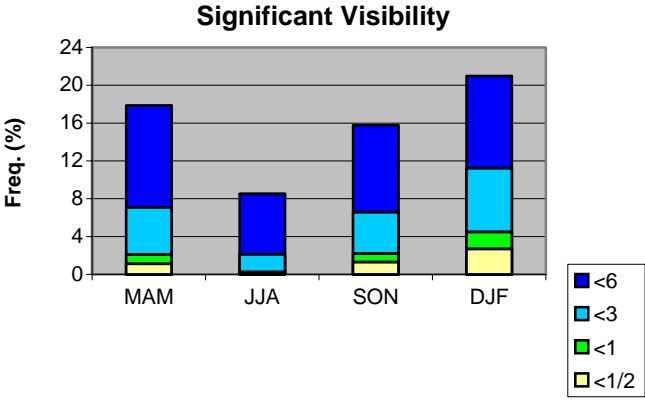
Comment: Charlie Liles:

The first graph shows the seasonal average hourly daily frequencies of thunderstorms at the station and within 50 miles. The second graph shows the seasonal average daily probability of thunderstorms within 50 miles of the station.

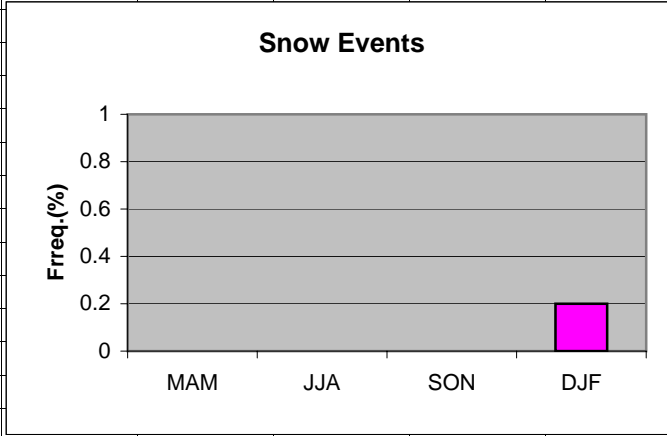
	A	B	C	D	E	F	G	H
1	Ceilings							
2		MAM	JJA	SON	DJF			
3	<2000	22.38	3.91	12.67	28.21			
4	<400	3.55	0.41	2.8	8.22			
5	<200	1.56	0.12	1.26	3.48			
6								
7								
8								
9								
10								
11								
12								
13								
14								
15								
16								
17								
18								
19								
20								



	A	B	C	D	E	F	G	H	I
1	Visibility								
2		MAM	JJA	SON	DJF				
3	<6	17.88	8.51	15.77	20.99				
4	<3	7.1	2.13	6.58	11.23				
5	<1	2.1	0.26	2.2	4.49				
6	<1/2	1.11	0.09	1.31	2.69				
7									
8									
9									
10									
11									
12									
13									
14									
15									
16									
17									
18									
19									
20									
21									



	A	B	C	D	E	F	G	H
1	Snow events							
2								
3	MAM	0						
4	JJA	0						
5	SON	0						
6	DJF	0.20						
7								
8								
9								
10								
11								
12								
13								
14								
15								
16								
17								
18								
19								



	A	B	C	D	E	F	G	H
1	Freezing Rain/drizzle/Ice Pellets							
2								
3	MAM	0.01						
4	JJA	0						
5	SON	0						
6	DJF	0.34						
7								
8								
9								
10								
11								
12								
13								
14								
15								
16								
17								
18								
19								

