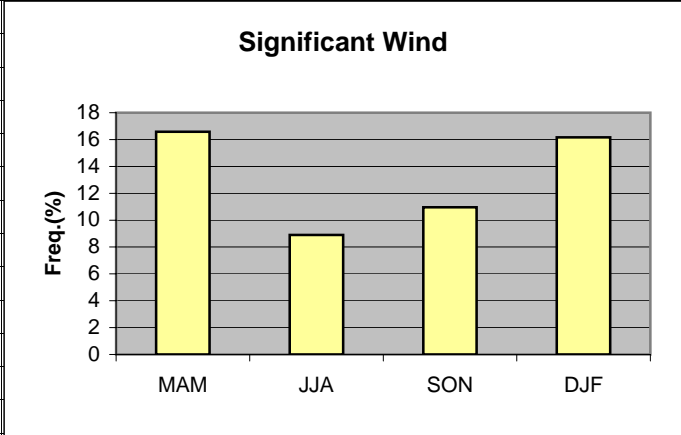


	A	B	C	D	E	F	G	H	I	J	K	L
1	Wind											
2												
3	MAM	16.58										
4	JJA	8.90										
5	SON	10.96										
6	DJF	16.17										
7												
8			MAM	JJA	SON	DJF						
9	>10kt 020-080		5.46	2.39	2.75	3.89						
10	>10kt 200-260		11.12	6.51	8.21	12.28						
11												
12												
13												
14												
15												
16												
17												
18												
19												
20												



**Cell:** A1

**Comment:** Charlie Liles:

Significant wind factors: >10kt 020-080, >10kt 200-260.

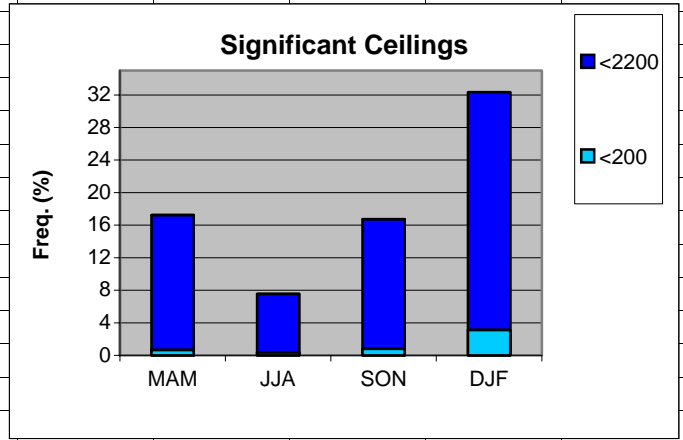


**Cell:** A1

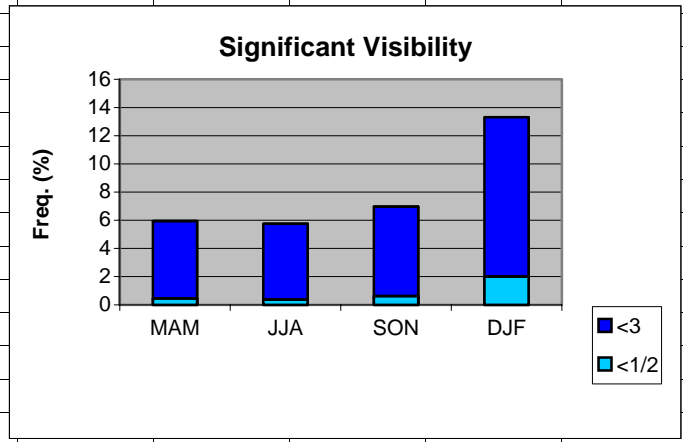
**Comment:** Charlie Liles:

The first graph shows the seasonal average hourly daily frequencies of thunderstorms at the station and within 50 miles. The second graph shows the seasonal average daily probability of thunderstorms within 50 miles of the station.

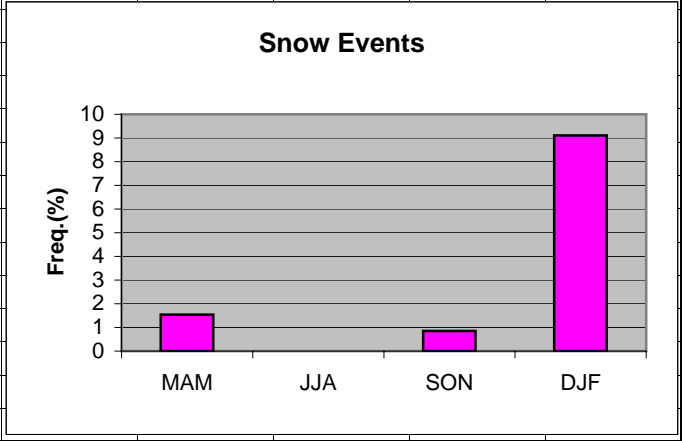
	A	B	C	D	E	F	G	H
1	Ceilings							
2		MAM	JJA	SON	DJF			
3	<2200	17.24	7.56	16.74	32.34			
4	<200	0.67	0.38	0.80	3.13			
5								
6								
7								
8								
9								
10								
11								
12								
13								
14								
15								
16								
17								
18								
19								



	A	B	C	D	E	F	G	H
1	Visibility							
2		MAM	JJA	SON	DJF			
3	<3	5.94	5.75	6.97	13.31			
4	<1/2	0.45	0.37	0.62	2.01			
5								
6								
7								
8								
9								
10								
11								
12								
13								
14								
15								
16								
17								
18								
19								



	A	B	C	D	E	F	G	H
1	Snow events							
2								
3	MAM	1.54						
4	JJA	0						
5	SON	0.85						
6	DJF	9.11						
7								
8								
9								
10								
11								
12								
13								
14								
15								
16								
17								
18								
19								



	A	B	C	D	E	F	G	H
1	Freezing Rain/drizzle/Ice Pellets							
2								
3	MAM	0.22						
4	JJA	0						
5	SON	0.04						
6	DJF	1.12						
7								
8								
9								
10								
11								
12								
13								
14								
15								
16								
17								
18								
19								

