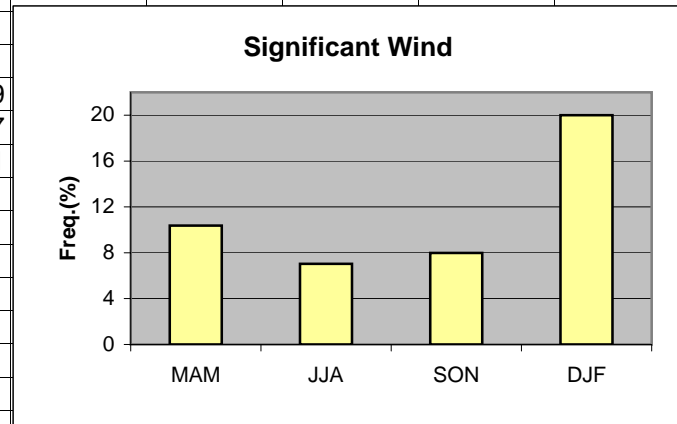


	A	B	C	D	E	F	G	H	I	J	K
1	Wind										
2											
3	MAM	10.37									
4	JJA	7.04									
5	SON	7.99									
6	DJF	20.00									
7											
8			MAM	JJA	SON	DJF					
9	>=5kt 120-280		6.58	1.73	5.28	18.69					
10	>25kt any direction		3.81	5.24	2.75	2.17					
11	>35kt 060-120		0.03	0.07	0.03	0.01					
12											
13											
14											
15											
16											
17											
18											
19											

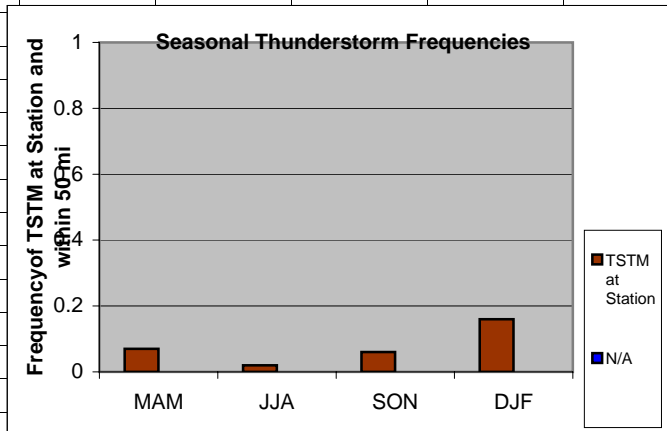


Cell: A1

Comment: Charlie Liles:

Significant wind factors: ≥ 5 kt 120-280, > 25 kt any direction, > 35 kt 060-120.

	A	B	C	D	E	F
1	Thunderstorms					
2		Station	50 mi			
3	MAM	0.07	N/A			
4	JJA	0.02	N/A			
5	SON	0.06	N/A			
6	DJF	0.16	N/A			
7						
8						
9						
10						
11						
12						
13						
14						
15						
16						
17						
18						
19						
20						

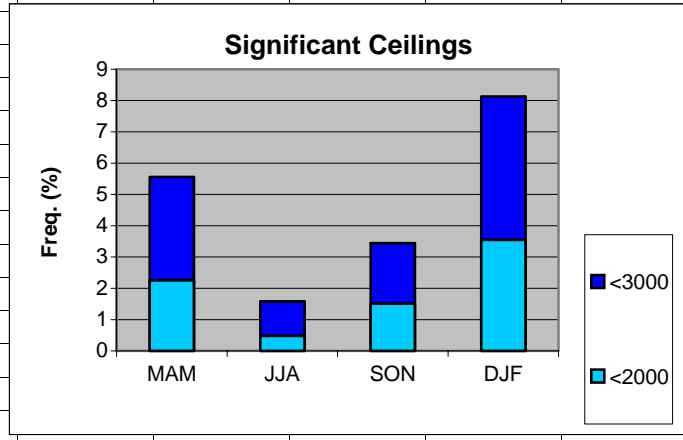


Cell: A1

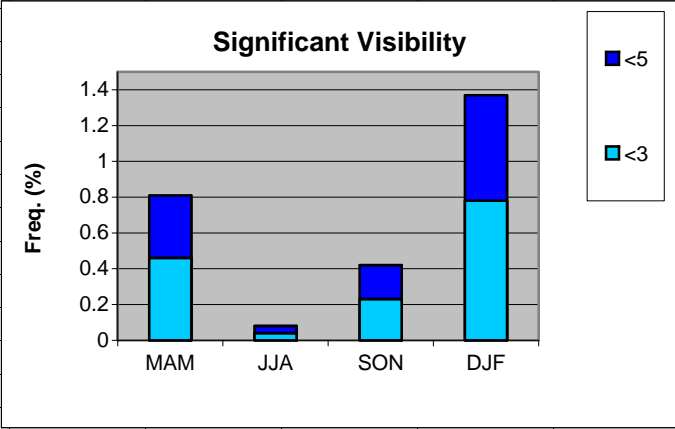
Comment: Charlie Liles:

The graph shows the seasonal average hourly frequency of thunderstorms at the station.

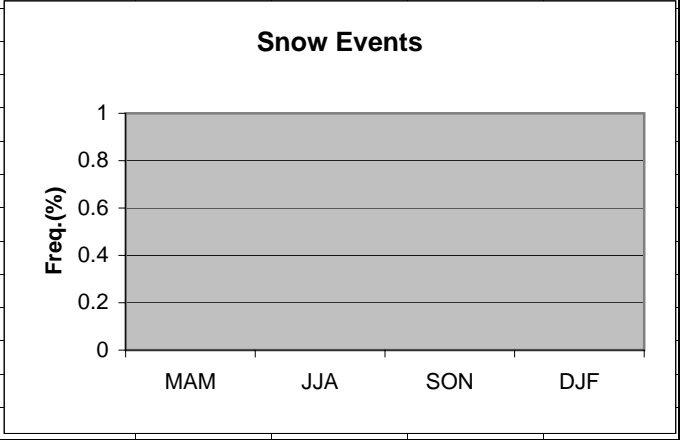
	A	B	C	D	E	F	G	H
1	Ceilings							
2		MAM	JJA	SON	DJF			
3	<3000	5.56	1.58	3.44	8.13			
4	<2000	2.26	0.48	1.51	3.55			
5								
6								
7								
8								
9								
10								
11								
12								
13								
14								
15								
16								
17								
18								
19								



	A	B	C	D	E	F	G	H
1	Visibility							
2		MAM	JJA	SON	DJF			
3	<5	0.81	0.08	0.42	1.37			
4	<3	0.46	0.04	0.23	0.78			
5								
6								
7								
8								
9								
10								
11								
12								
13								
14								
15								
16								
17								
18								
19								



	A	B	C	D	E	F	G	H
1	Snow events							
2								
3	MAM	0						
4	JJA	0						
5	SON	0						
6	DJF	0						
7								
8								
9								
10								
11								
12								
13								
14								
15								
16								
17								
18								
19								



	A	B	C	D	E	F	G	H
1	Freezing Rain/drizzle/Ice Pellets							
2								
3	MAM	0						
4	JJA	0						
5	SON	0						
6	DJF	0						
7								
8								
9								
10								
11								
12								
13								
14								
15								
16								
17								
18								
19								

