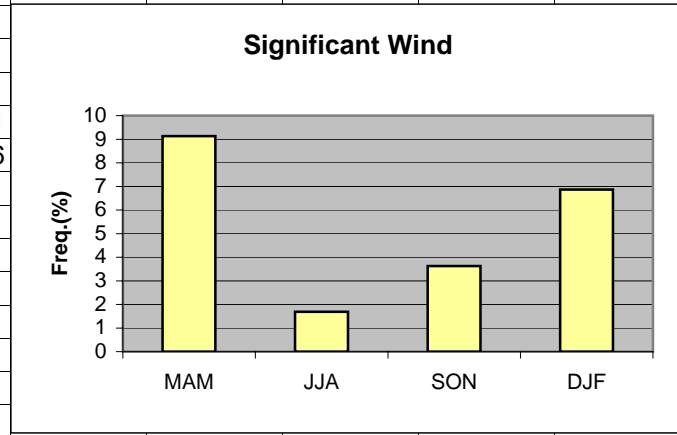


	A	B	C	D	E	F	G	H	I	J	K
1	Wind										
2											
3	MAM	9.13									
4	JJA	1.69									
5	SON	3.63									
6	DJF	6.87									
7											
8			MAM	JJA	SON	DJF					
9	>=10kt 070-130		5.05	1.16	1.32	2.31					
10	>=10kt 250-310		4.08	0.53	2.31	4.56					
11											
12											
13											
14											
15											
16											
17											
18											

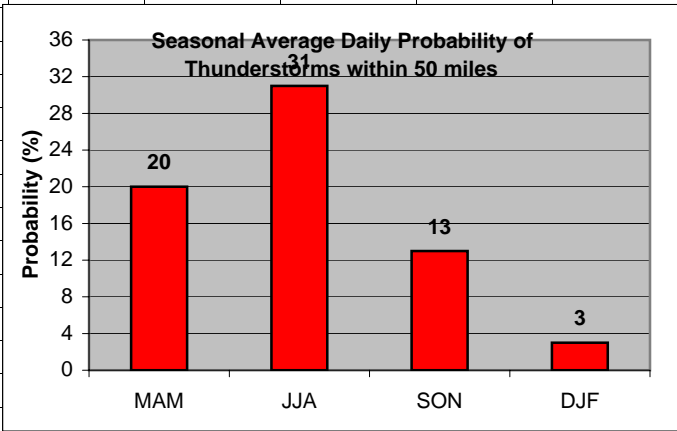
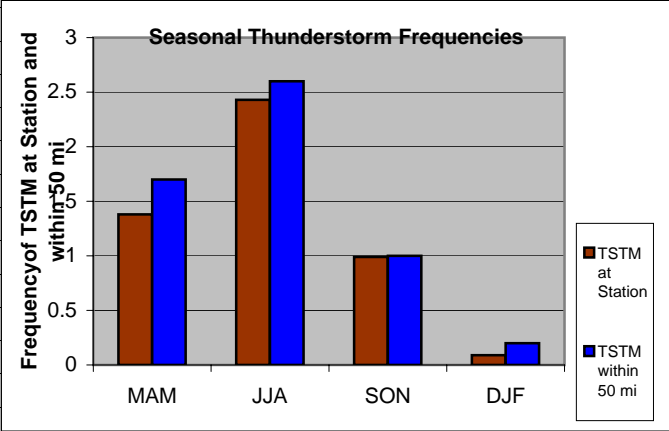


Cell: A1

Comment: Charlie Liles:

Significant wind factors: ≥ 20 kt sustained or gusts 070-130, ≥ 20 kt sustained or gusts 250-310.

	A	B	C	D	E	F	G	H	I	J	K
1	Thunderstorms										
2		Station	50 mi			Daily Probability					
3	MAM	1.38	1.70		MAM	20					
4	JJA	2.43	2.60		JJA	31					
5	SON	0.99	1.00		SON	13					
6	DJF	0.09	0.20		DJF	3					
7											
8											
9											
10											
11											
12											
13											
14											
15											
16											
17											
18											
19											
20											

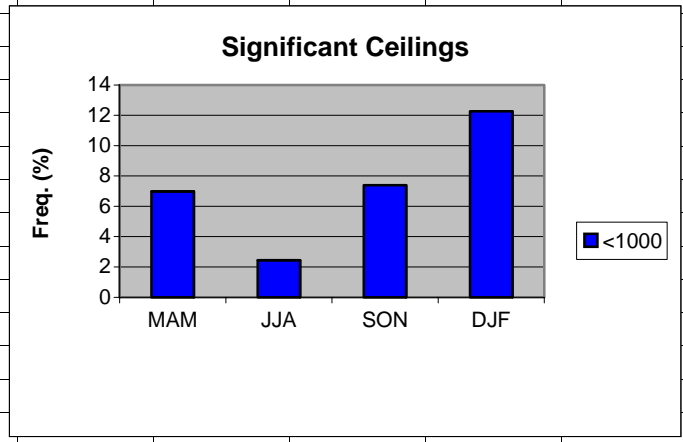


Cell: A1

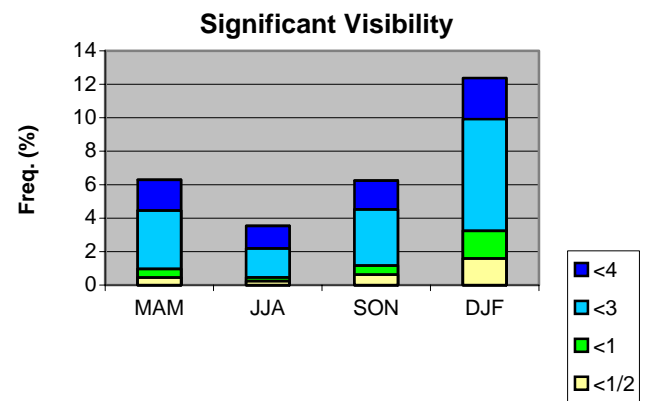
Comment: Charlie Liles:

The first graph shows the seasonal average hourly daily frequencies of thunderstorms at the station and within 50 miles. The second graph shows the seasonal average daily probability of thunderstorms within 50 miles of the station.

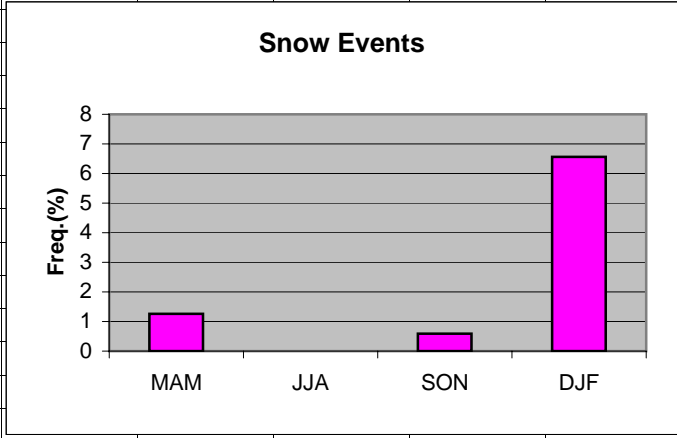
	A	B	C	D	E	F	G	H
1	Ceilings							
2		MAM	JJA	SON	DJF			
3	<1000	6.98	2.44	7.39	12.26			
4								
5								
6								
7								
8								
9								
10								
11								
12								
13								
14								
15								
16								
17								
18								
19								



	A	B	C	D	E	F	G
1	Visibility						
2		MAM	JJA	SON	DJF		
3	<4	6.29	3.54	6.24	12.37		
4	<3	4.46	2.19	4.52	9.92		
5	<1	0.97	0.46	1.17	3.24		
6	<1/2	0.45	0.24	0.62	1.59		
7							
8							
9							
10							
11							
12							
13							
14							
15							
16							
17							
18							
19							
20							
21							



	A	B	C	D	E	F	G	H
1	Snow events							
2								
3	MAM	1.26						
4	JJA	0						
5	SON	0.59						
6	DJF	6.56						
7								
8								
9								
10								
11								
12								
13								
14								
15								
16								
17								
18								
19								



	A	B	C	D	E	F	G	H
1	Freezing Rain/drizzle/Ice Pellets							
2								
3	MAM	0.22						
4	JJA	0						
5	SON	0.14						
6	DJF	1.16						
7								
8								
9								
10								
11								
12								
13								
14								
15								
16								
17								
18								
19								

