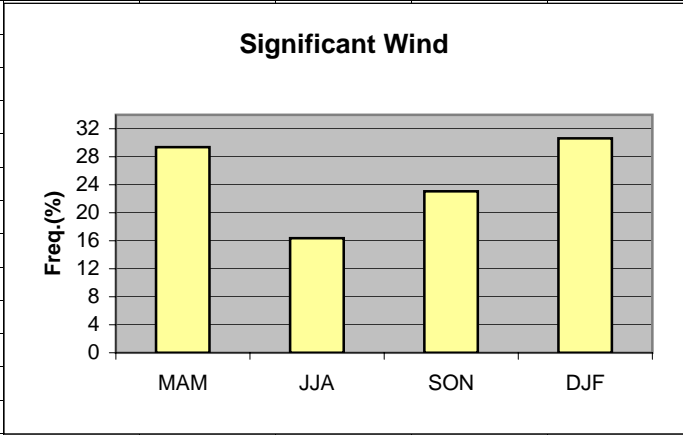


	A	B	C	D	E	F	G	H	I	J	K	L
1	Wind											
2												
3	MAM	29.37										
4	JJA	16.38										
5	SON	23.07										
6	DJF	30.63										
7												
8			MAM	JJA	SON	DJF						
9	>20kt 150-210		0.53	0.01	0.14	0.30						
10	>20kt 330-030		0.11	0.03	0.06	0.30						
11	>8kt 150-210		20.01	11.23	12.70	15.40						
12	>8kt 330-030		9.36	5.15	10.37	15.23						
13												
14												
15												
16												
17												
18												
19												

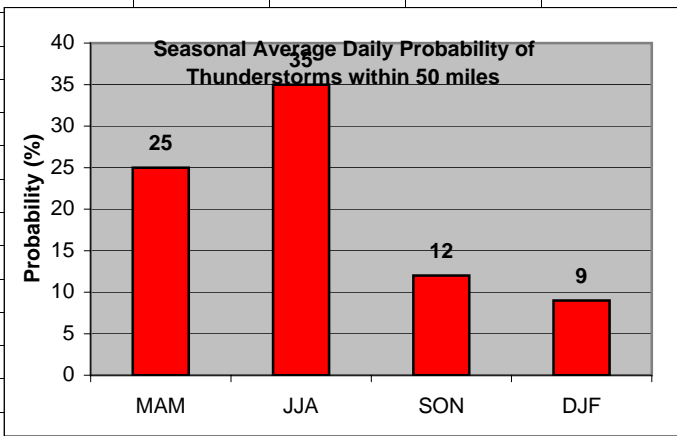
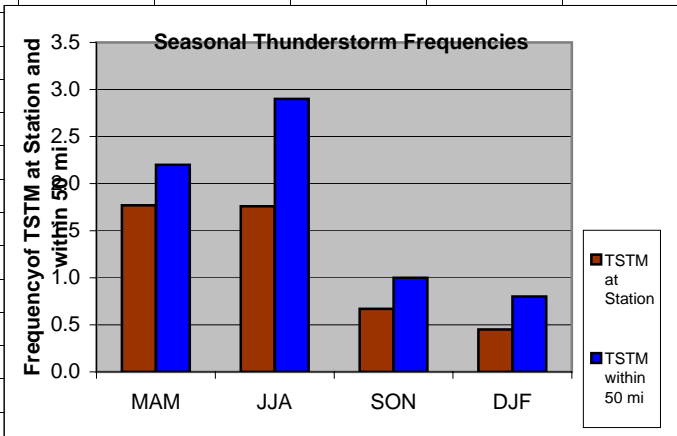


**Cell:** A1

**Comment:** Charlie Liles:

Significant wind factors: >20kt 150-210, >20kt 330-030. For one customer >8kt 150-210 or >8kt 330-030 was considered significant. The graph shows results for frequency of >8kt 330-030 or >8kt 150-210.

	A	B	C	D	E	F	G	H	I	J	K	L
1	Thunderstorms											
2		Station	50 mi			Daily Probability						
3	MAM	1.77	2.20		MAM	25						
4	JJA	1.76	2.90		JJA	35						
5	SON	0.67	1.00		SON	12						
6	DJF	0.45	0.80		DJF	9						
7												
8												
9												
10												
11												
12												
13												
14												
15												
16												
17												
18												
19												
20												

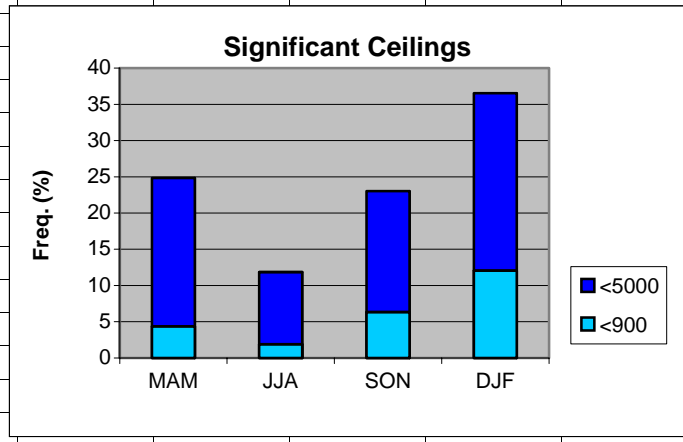


**Cell:** A1

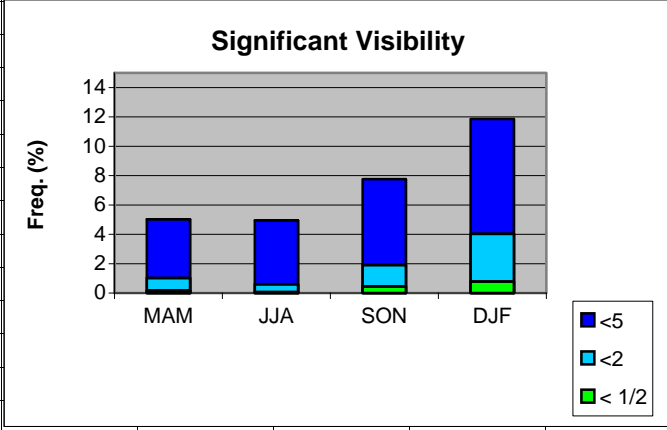
**Comment:** Charlie Liles:

The first graph shows the seasonal average hourly daily frequencies of thunderstorms at the station and within 50 miles. The second graph shows the seasonal average daily probability of thunderstorms within 50 miles of the station.

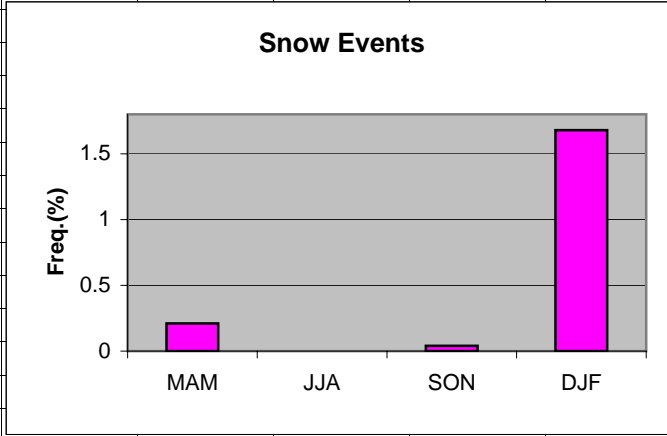
	A	B	C	D	E	F	G	H
1	Ceilings							
2		MAM	JJA	SON	DJF			
3	<5000	24.84	11.86	23.02	36.55			
4	<900	4.37	1.90	6.32	12.05			
5								
6								
7								
8								
9								
10								
11								
12								
13								
14								
15								
16								
17								
18								
19								



	A	B	C	D	E	F	G	H
1	Visibility							
2		MAM	JJA	SON	DJF			
3	<5	5.03	4.95	7.76	11.86			
4	<2	1.03	0.60	1.91	4.03			
5	< 1/2	0.18	0.07	0.45	0.79			
6								
7								
8								
9								
10								
11								
12								
13								
14								
15								
16								
17								
18								
19								



	A	B	C	D	E	F	G	H
1	Snow events							
2								
3	MAM	0.21						
4	JJA	0						
5	SON	0						
6	DJF	1.68						
7								
8								
9								
10								
11								
12								
13								
14								
15								
16								
17								
18								
19								



	A	B	C	D	E	F	G	H
1	Freezing Rain/drizzle/Ice Pellets							
2								
3	MAM	0.04						
4	JJA	0						
5	SON	0						
6	DJF	0.79						
7								
8								
9								
10								
11								
12								
13								
14								
15								
16								
17								
18								
19								

