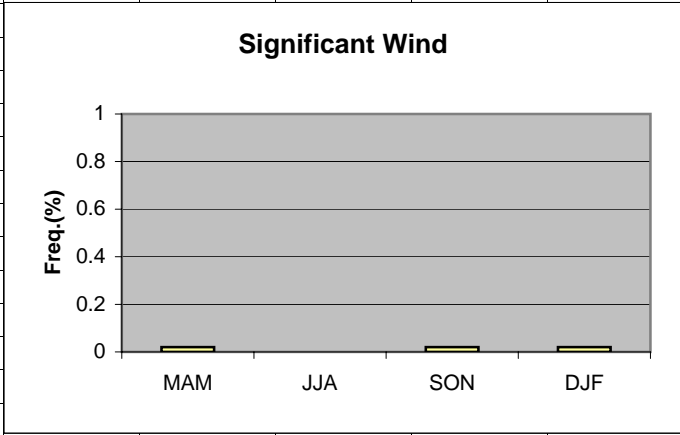
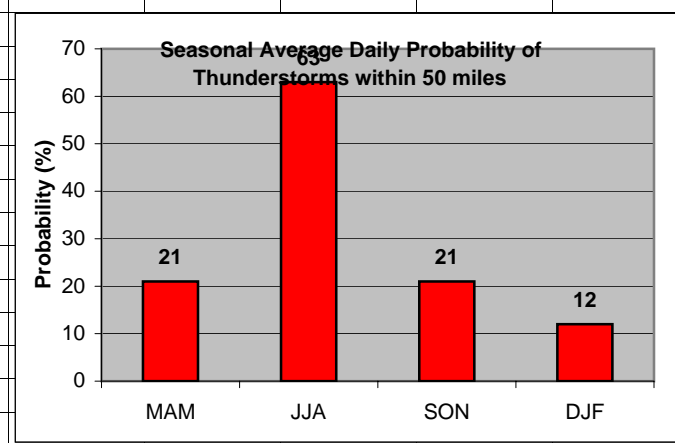
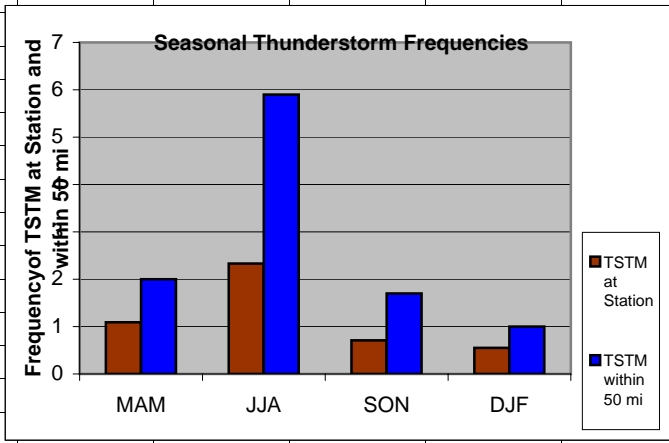


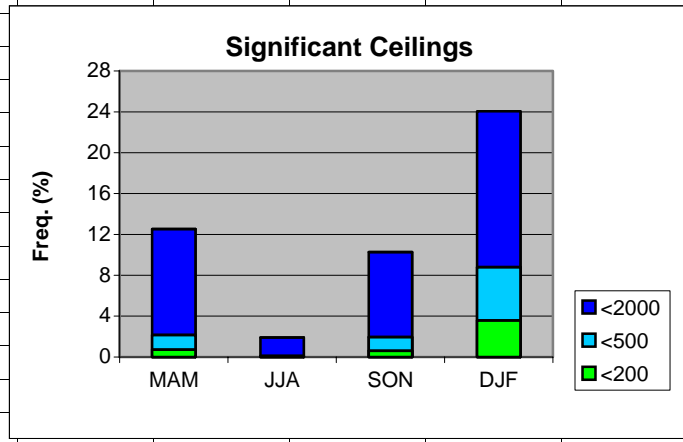
	A	B	C	D	E	F	G	H	I	J	K	L
1	Wind											
2												
3	MAM	0.02										
4	JJA	0										
5	SON	0.02										
6	DJF	0.02										
7			MAM	JJA	SON	DJF						
8	>25kt 330-030		0	0	0.01	0						
9	>25kt 160-220		0.02	0	0.01	0.02						
10												
11												
12												
13												
14												
15												
16												
17												



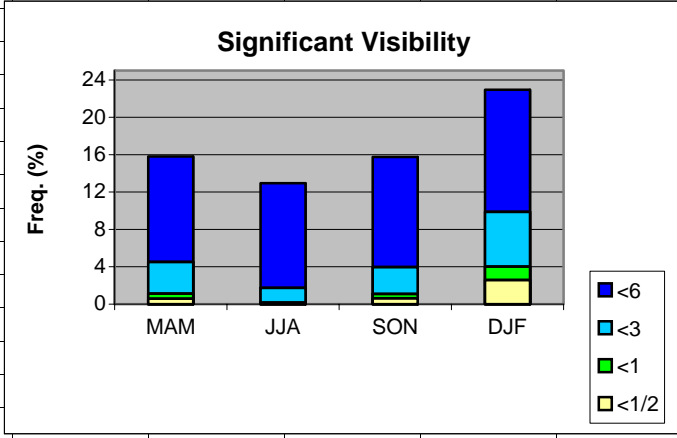
	A	B	C	D	E	F	G	H	I	J	K
1	Thunderstorms										
2		Station	50 mi			Daily Probability					
3	MAM	1.09	2.00		MAM	21					
4	JJA	2.33	5.90		JJA	63					
5	SON	0.71	1.70		SON	21					
6	DJF	0.55	1.00		DJF	12					
7											
8											
9											
10											
11											
12											
13											
14											
15											
16											
17											
18											
19											
20											



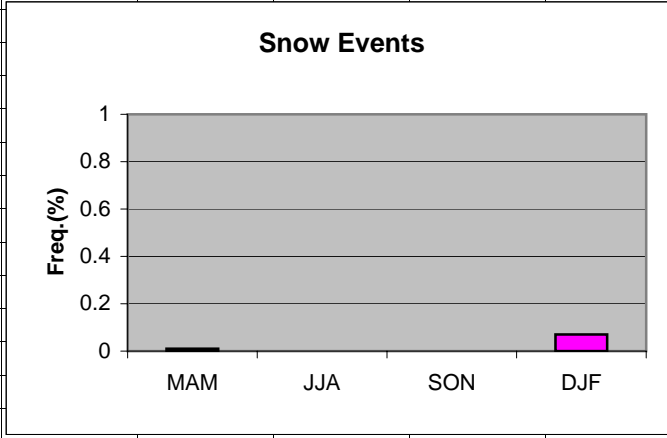
	A	B	C	D	E	F	G	H
1	Ceilings							
2		MAM	JJA	SON	DJF			
3	<2000	12.52	1.90	10.27	24.05			
4	<500	2.16	0.11	1.96	8.80			
5	<200	0.71	0.02	0.60	3.59			
6								
7								
8								
9								
10								
11								
12								
13								
14								
15								
16								
17								
18								
19								



	A	B	C	D	E	F	G	H	I
1	Visibility								
2		MAM	JJA	SON	DJF				
3	<6	15.81	12.94	15.75	22.96				
4	<3	4.52	1.74	3.97	9.88				
5	<1	1.13	0.16	1.09	4.02				
6	<1/2	0.58	0.04	0.63	2.58				
7									
8									
9									
10									
11									
12									
13									
14									
15									
16									
17									
18									
19									
20									
21									



	A	B	C	D	E	F	G	H
1	Snow events							
2								
3	MAM	0.01						
4	JJA	0						
5	SON	0						
6	DJF	0.07						
7								
8								
9								
10								
11								
12								
13								
14								
15								
16								
17								
18								
19								



	A	B	C	D	E	F	G	H
1	Freezing Rain/drizzle/Ice Pellets							
2								
3	MAM	0						
4	JJA	0						
5	SON	0						
6	DJF	0.04						
7								
8								
9								
10								
11								
12								
13								
14								
15								
16								
17								
18								
19								

