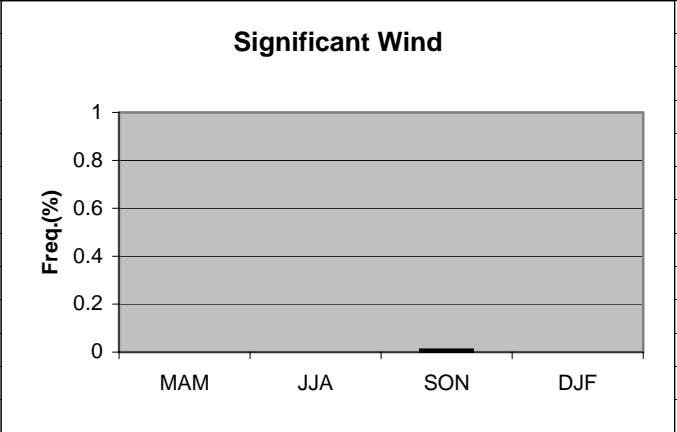


	A	B	C	D	E	F	G	H	I	J	K
1	Wind										
2											
3	MAM	0									
4	JJA	0									
5	SON	0.01									
6	DJF	0									
7			MAM	JJA	SON	DJF					
8	>25kt 350-010		0	0	0.01	0					
9	>25kt 170-190		0	0	0	0					
10											
11											
12											
13											
14											
15											
16											
17											
18											

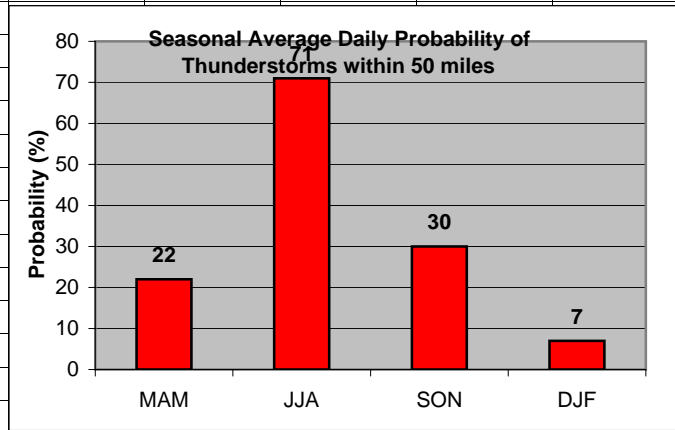
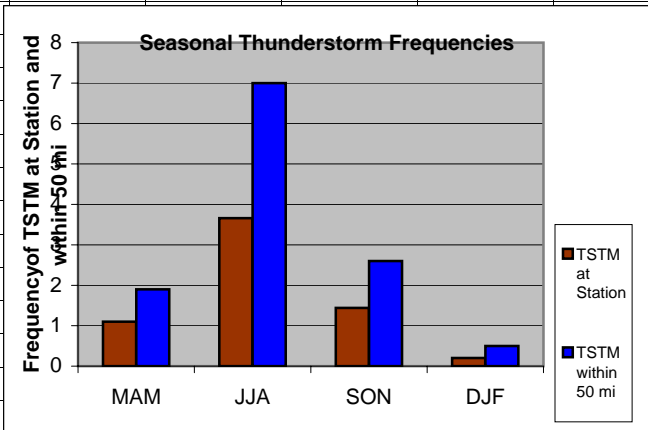


**Cell:** A1

**Comment:** Charlie Liles:

Significant wind factors: >25kt 350-010, >25kt 170-190.

	A	B	C	D	E	F	G	H	I	J	K
1	Thunderstorms										
2		Station	50 mi		Daily Probability						
3	MAM	1.10	1.90		MAM	22					
4	JJA	3.66	7.00		JJA	71					
5	SON	1.44	2.60		SON	30					
6	DJF	0.20	0.50		DJF	7					
7											
8											
9											
10											
11											
12											
13											
14											
15											
16											
17											
18											
19											
20											
21											

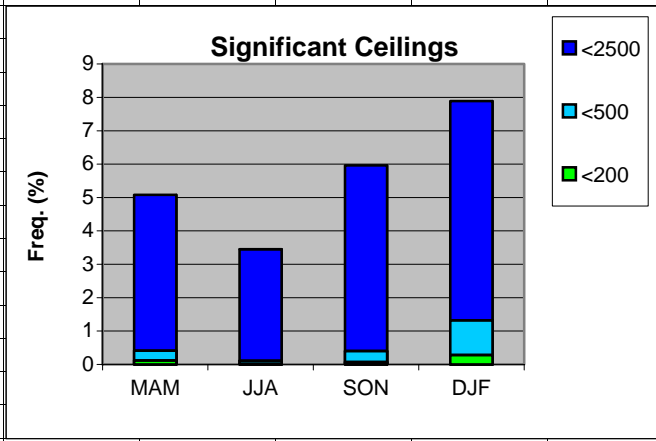


**Cell:** A1

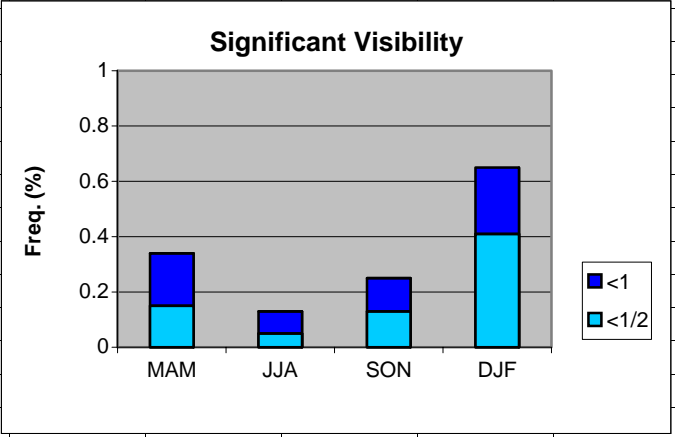
**Comment:** Charlie Liles:

The first graph shows the seasonal average hourly daily frequencies of thunderstorms at the station and within 50 miles. The second graph shows the seasonal average daily probability of thunderstorms within 50 miles of the station.

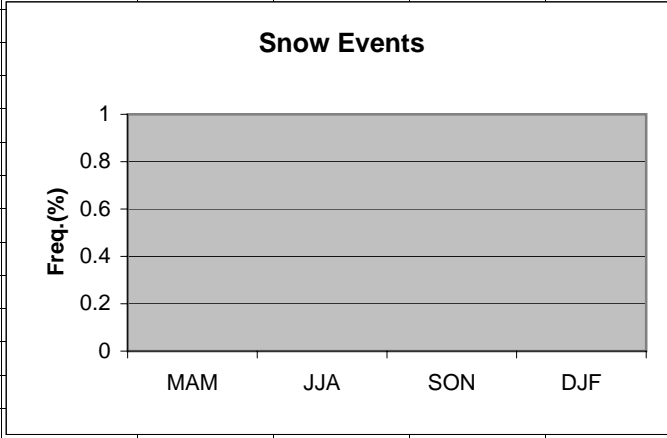
	A	B	C	D	E	F	G
1	Ceilings						
2		MAM	JJA	SON	DJF		
3	<2500	5.08	3.45	5.96	7.89		
4	<500	0.41	0.11	0.40	1.32		
5	<200	0.12	0.02	0.07	0.28		
6							
7							
8							
9							
10							
11							
12							
13							
14							
15							
16							
17							
18							
19							
20							



	A	B	C	D	E	F	G	H
1	Visibility							
2		MAM	JJA	SON	DJF			
3	<1	0.34	0.13	0.25	0.65			
4	<1/2	0.15	0.05	0.13	0.41			
5								
6								
7								
8								
9								
10								
11								
12								
13								
14								
15								
16								
17								
18								
19								



	A	B	C	D	E	F	G	H
1	Snow events							
2								
3	MAM	0						
4	JJA	0						
5	SON	0						
6	DJF	0						
7								
8								
9								
10								
11								
12								
13								
14								
15								
16								
17								
18								
19								



	A	B	C	D	E	F	G	H
1	Freezing Rain/drizzle/Ice Pellets							
2								
3	MAM	0						
4	JJA	0						
5	SON	0						
6	DJF	0						
7								
8								
9								
10								
11								
12								
13								
14								
15								
16								
17								
18								
19								

