

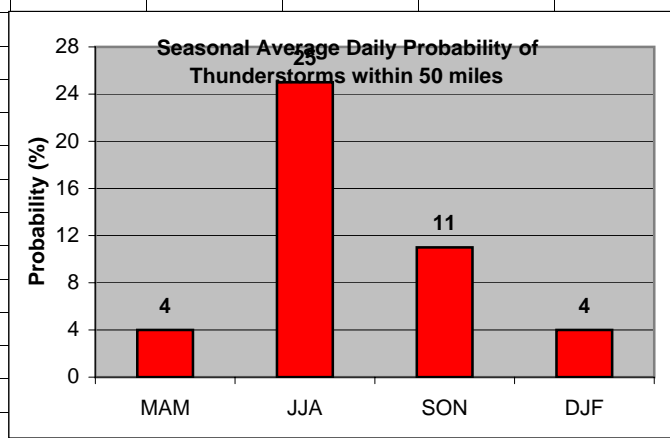
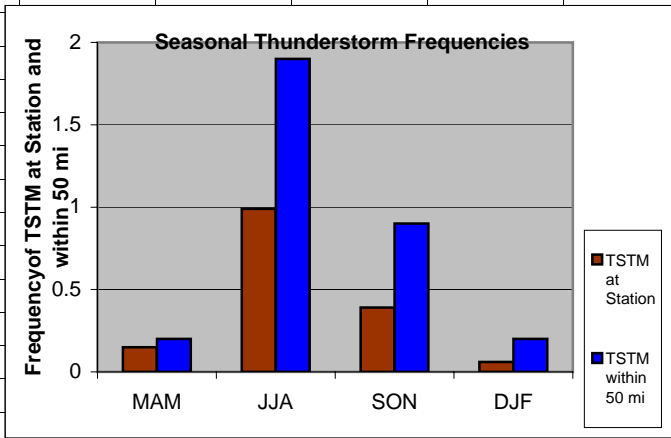
	A	B	C	D	E	F	G	H	I										
1	Wind																		
2																			
3	MAM	0.01																	
4	JJA	0.02																	
5	SON	0.02																	
6	DJF	0																	
7				<div data-bbox="877 695 1549 1123" data-label="Figure"> <p><b>Significant Wind</b></p> <table border="1"> <thead> <tr> <th>Season</th> <th>Frequency (%)</th> </tr> </thead> <tbody> <tr> <td>MAM</td> <td>0.01</td> </tr> <tr> <td>JJA</td> <td>0.02</td> </tr> <tr> <td>SON</td> <td>0.02</td> </tr> <tr> <td>DJF</td> <td>0</td> </tr> </tbody> </table> </div>						Season	Frequency (%)	MAM	0.01	JJA	0.02	SON	0.02	DJF	0
Season	Frequency (%)																		
MAM	0.01																		
JJA	0.02																		
SON	0.02																		
DJF	0																		
8																			
9																			
10																			
11																			
12																			
13																			
14																			
15																			
16																			
17																			
18																			
19																			
20																			

**Cell:** A1

**Comment:** Charlie Liles:

Significant wind factors: >25kt 330-030, >25kt 150-210.

	A	B	C	D	E	F	G	H	I	J	K
1	Thunderstorms										
2		Station	50 mi			Daily Probability					
3	MAM	0.15	0.20		MAM	4					
4	JJA	0.99	1.90		JJA	25					
5	SON	0.39	0.90		SON	11					
6	DJF	0.06	0.20		DJF	4					
7											
8											
9											
10											
11											
12											
13											
14											
15											
16											
17											
18											
19											
20											

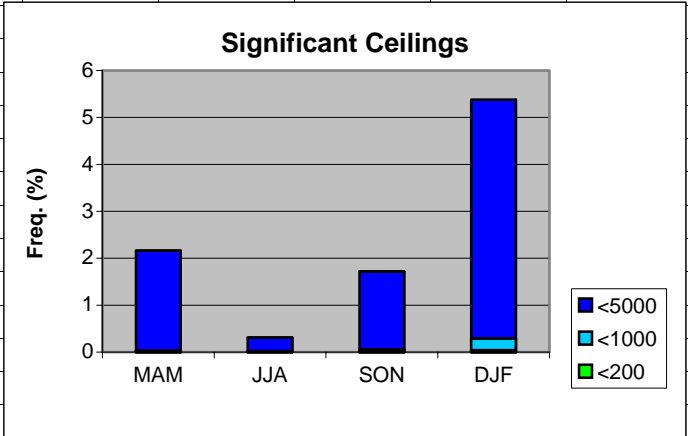


**Cell:** A1

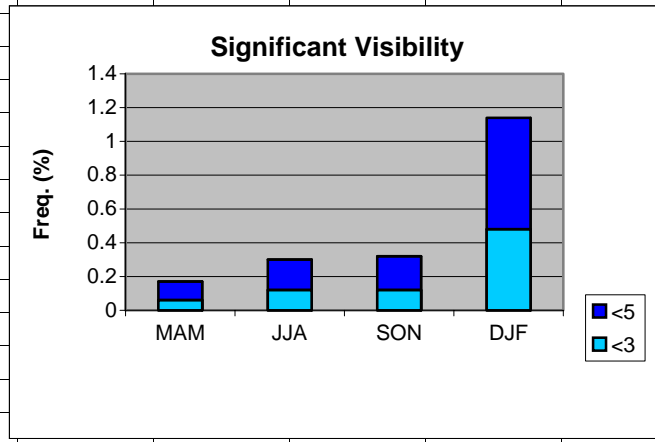
**Comment:** Charlie Liles:

The first graph shows the seasonal average hourly daily frequencies of thunderstorms at the station and within 50 miles. The second graph shows the seasonal average daily probability of thunderstorms within 50 miles of the station.

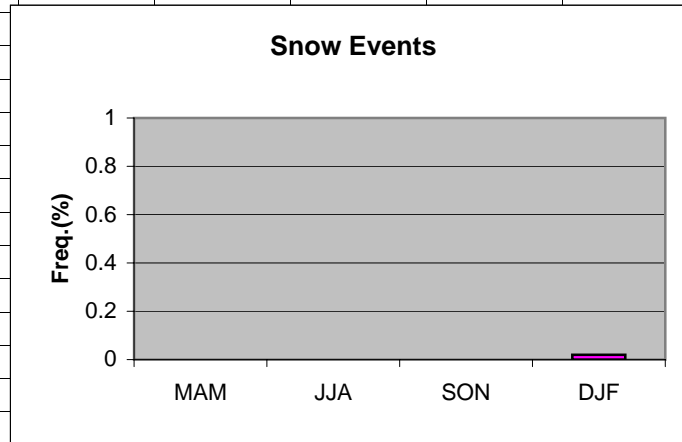
	A	B	C	D	E	F	G	H
1	Ceilings							
2		MAM	JJA	SON	DJF			
3	<5000	2.16	0.31	1.72	5.38			
4	<1000	0.03	0.02	0.06	0.29			
5	<200	0.01	0.01	0.01	0.04			
6								
7								
8								
9								
10								
11								
12								
13								
14								
15								
16								
17								
18								
19								
20								



	A	B	C	D	E	F	G	H
1	Visibility							
2		MAM	JJA	SON	DJF			
3	<5	0.17	0.30	0.32	1.14			
4	<3	0.06	0.12	0.12	0.48			
5								
6								
7								
8								
9								
10								
11								
12								
13								
14								
15								
16								
17								
18								
19								



	A	B	C	D	E	F	G	H	I
1	Snow events								
2									
3	MAM	0							
4	JJA	0							
5	SON	0							
6	DJF	0.02							
7									
8									
9									
10									
11									
12									
13									
14									
15									
16									
17									
18									
19									
20									



	A	B	C	D	E	F	G	H
1	Freezing Rain/drizzle/Ice Pellets							
2								
3	MAM	0						
4	JJA	0						
5	SON	0						
6	DJF	0						
7								
8								
9								
10								
11								
12								
13								
14								
15								
16								
17								
18								
19								

