

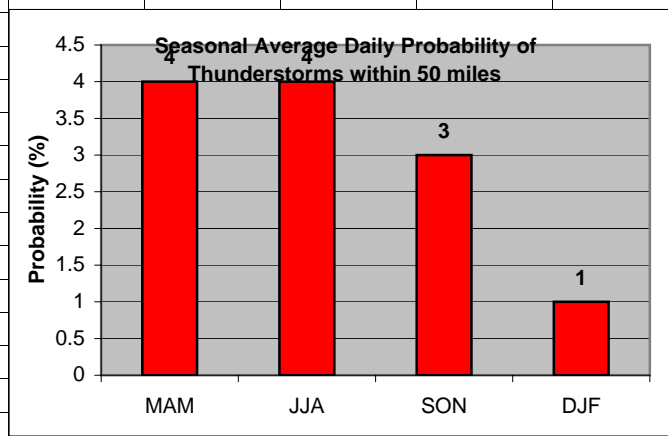
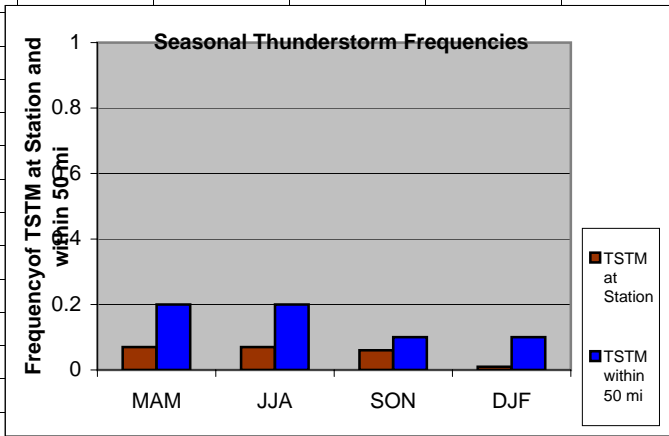
	A	B	C	D	E	F	G										
1	Wind																
2																	
3	MAM	0.82															
4	JJA	0.06															
5	SON	0.65															
6	DJF	1.71															
7																	
8			<div data-bbox="877 727 1533 1154" data-label="Figure"> <p>Significant Wind</p> <table border="1"> <thead> <tr> <th>Season</th> <th>Frequency (%)</th> </tr> </thead> <tbody> <tr> <td>MAM</td> <td>0.82</td> </tr> <tr> <td>JJA</td> <td>0.06</td> </tr> <tr> <td>SON</td> <td>0.65</td> </tr> <tr> <td>DJF</td> <td>1.71</td> </tr> </tbody> </table> </div>					Season	Frequency (%)	MAM	0.82	JJA	0.06	SON	0.65	DJF	1.71
Season	Frequency (%)																
MAM	0.82																
JJA	0.06																
SON	0.65																
DJF	1.71																
9																	
10																	
11																	
12																	
13																	
14																	
15																	
16																	
17																	
18																	
19																	
20																	

Cell: A1

Comment: Charlie Liles:

Significant wind factor: >20kt from any direction.

	A	B	C	D	E	F	G	H	I	J	K
1	Thunderstorms										
2		Station	50 mi			Daily Probability					
3	MAM	0.07	0.20		MAM	4					
4	JJA	0.07	0.20		JJA	4					
5	SON	0.06	0.10		SON	3					
6	DJF	0.01	0.1		DJF	1					
7											
8											
9											
10											
11											
12											
13											
14											
15											
16											
17											
18											
19											
20											

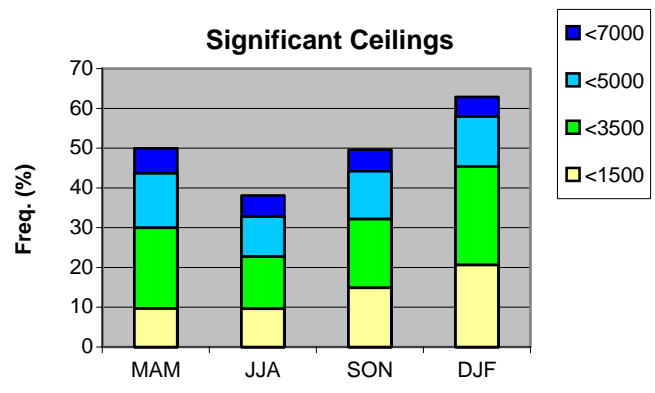


Cell: A1

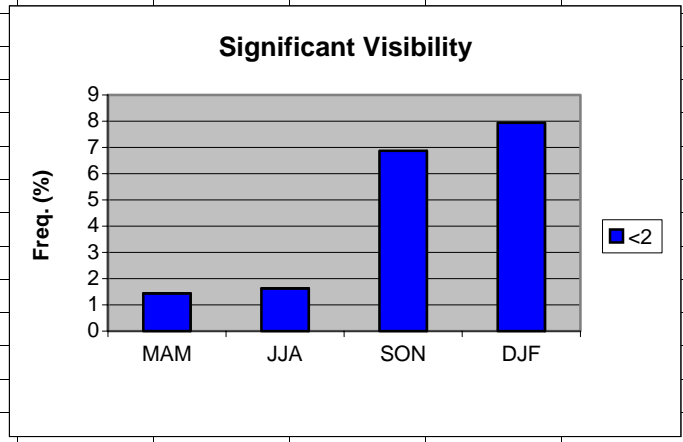
Comment: Charlie Liles:

The first graph shows the seasonal average hourly daily frequencies of thunderstorms at the station and within 50 miles. The second graph shows the seasonal average daily probability of thunderstorms within 50 miles of the station.

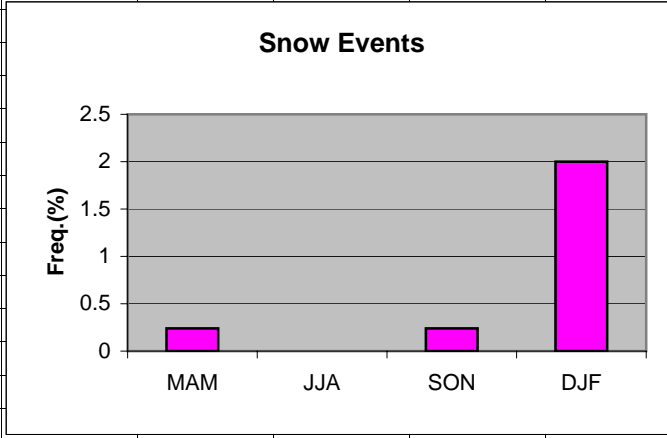
	A	B	C	D	E	F	G
1	Ceilings						
2		MAM	JJA	SON	DJF		
3	<7000	49.98	38.08	49.59	62.88		
4	<5000	43.66	32.80	44.17	57.92		
5	<3500	29.95	22.72	32.17	45.38		
6	<1500	9.68	9.62	14.87	20.64		
7							
8							
9							
10							
11							
12							
13							
14							
15							
16							
17							
18							
19							
20							
21							



	A	B	C	D	E	F	G	H
1	Visibility							
2		MAM	JJA	SON	DJF			
3	<2	1.44	1.63	6.87	7.94			
4								
5								
6								
7								
8								
9								
10								
11								
12								
13								
14								
15								
16								
17								
18								
19								



	A	B	C	D	E	F	G	H
1	Snow events							
2								
3	MAM	0.24						
4	JJA	0						
5	SON	0.24						
6	DJF	2.00						
7								
8								
9								
10								
11								
12								
13								
14								
15								
16								
17								
18								
19								



	A	B	C	D	E	F	G	H
1	Freezing Rain/drizzle/Ice Pellets							
2								
3	MAM	0						
4	JJA	0						
5	SON	0						
6	DJF	0.08						
7								
8								
9								
10								
11								
12								
13								
14								
15								
16								
17								
18								
19								

