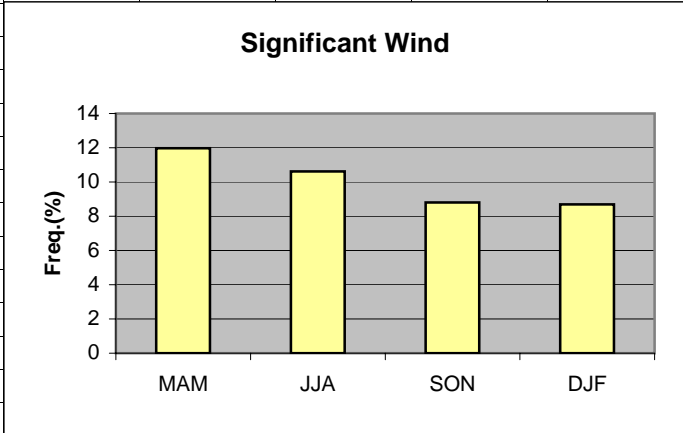


	A	B	C	D	E	F	G	H	I	J	K	L
1	Wind											
2												
3	MAM	11.97										
4	JJA	10.62										
5	SON	8.80										
6	DJF	8.69										
7			MAM	JJA	SON	DJF						
8	>=10kt 360-060		3.15	2.35	1.72	2.30						
9	>=10kt 180-240		8.82	8.27	7.08	6.39						
10												
11												
12												
13												
14												
15												
16												
17												
18												

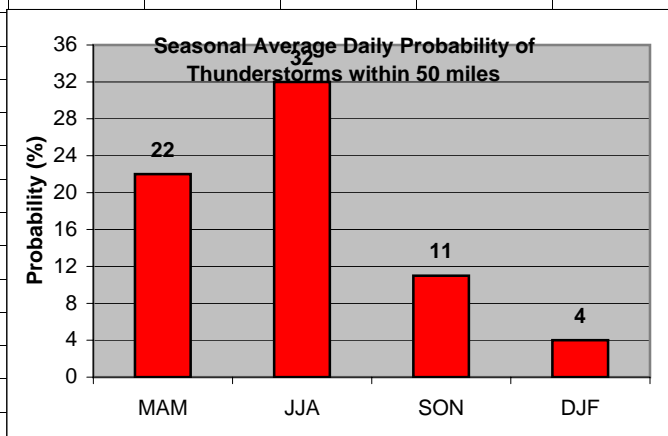
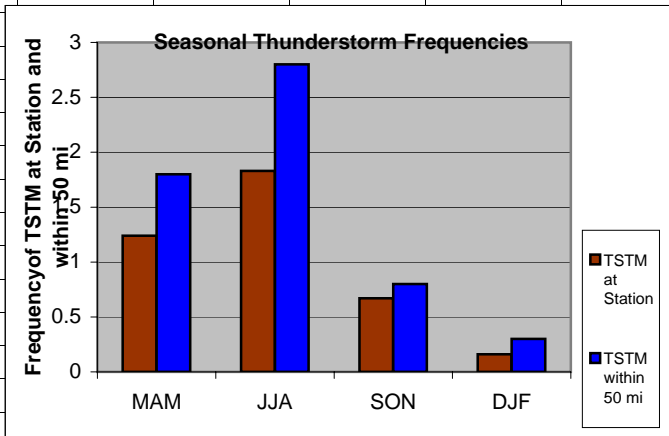


Cell: A1

Comment: Charlie Liles:

Significant wind factors: ≥ 10 kt 360-060, ≥ 10 kt 180-240.

	A	B	C	D	E	F	G	H	I	J	K
1	Thunderstorms										
2		Station	50 mi			Daily Probability					
3	MAM	1.24	1.80		MAM	22					
4	JJA	1.83	2.80		JJA	32					
5	SON	0.67	0.80		SON	11					
6	DJF	0.16	0.30		DJF	4					
7											
8											
9											
10											
11											
12											
13											
14											
15											
16											
17											
18											
19											
20											

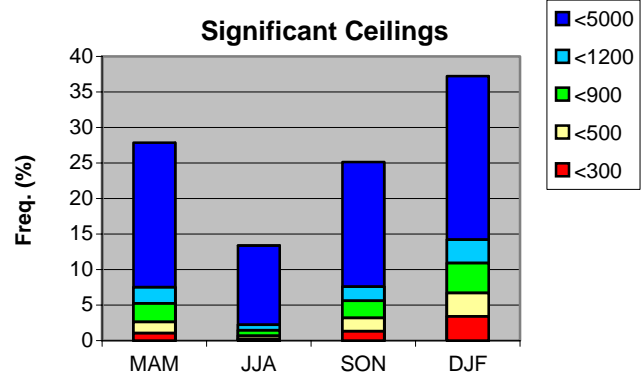


Cell: A1

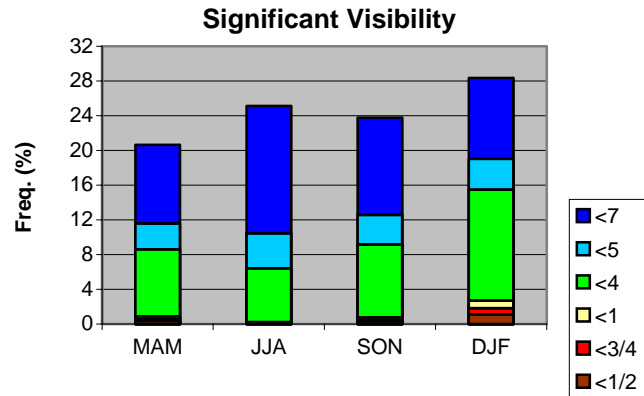
Comment: Charlie Liles:

The first graph shows the seasonal average hourly daily frequencies of thunderstorms at the station and within 50 miles. The second graph shows the seasonal average daily probability of thunderstorms within 50 miles of the station.

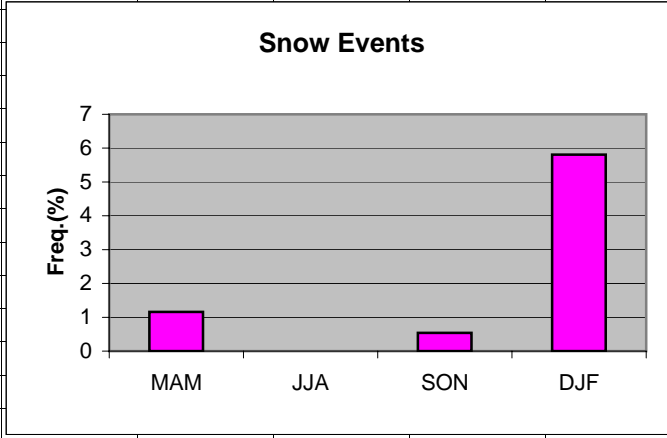
	A	B	C	D	E	F	G
1	Ceilings						
2		MAM	JJA	SON	DJF		
3	<5000	27.87	13.37	25.13	37.23		
4	<1200	7.52	2.23	7.60	14.21		
5	<900	5.26	1.47	5.62	10.92		
6	<500	2.64	0.68	3.21	6.72		
7	<300	1.06	0.22	1.33	3.42		
8							
9							
10							
11							
12							
13							
14							
15							
16							
17							
18							
19							
20							
21							
22							



	A	B	C	D	E	F	G
1	Visibility						
2		MAM	JJA	SON	DJF		
3	<7	20.64	25.12	23.78	28.35		
4	<5	11.58	10.45	12.58	19.03		
5	<4	8.61	6.42	9.16	15.48		
6	<1	0.89	0.23	0.78	2.69		
7	<3/4	0.60	0.16	0.51	1.84		
8	<1/2	0.36	0.10	0.33	1.14		
9							
10							
11							
12							
13							
14							
15							
16							
17							
18							
19							
20							
21							
22							
23							



	A	B	C	D	E	F	G	H
1	Snow events							
2								
3	MAM	1.16						
4	JJA	0						
5	SON	0.54						
6	DJF	5.81						
7								
8								
9								
10								
11								
12								
13								
14								
15								
16								
17								
18								
19								



	A	B	C	D	E	F	G	H
1	Freezing Rain/drizzle/Ice Pellets							
2								
3	MAM	0.12						
4	JJA	0						
5	SON	0.04						
6	DJF	1.12						
7								
8								
9								
10								
11								
12								
13								
14								
15								
16								
17								
18								
19								

