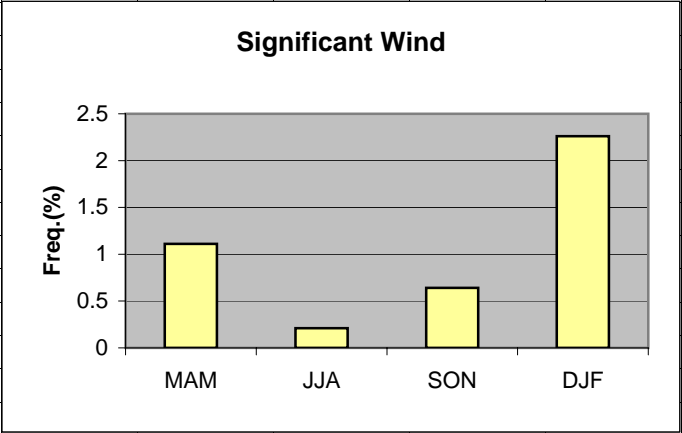


	A	B	C	D	E	F	G	H	I	J
1	Wind									
2										
3	MAM	1.11								
4	JJA	0.21								
5	SON	0.64								
6	DJF	2.26								
7						MAM	JJA	SON	DJF	
8	>20kt 240-300					0.82	0.08	0.40	1.16	
9	>10kt 150-210 and Ceiling <800 and/or visibility < 1 1/2					0.29	0.13	0.24	1.10	
10										
11										
12										
13										
14										
15										
16										
17										
18										
19										
20										
21										
22										
23										



Cell: A1

Comment: Charlie Liles:

Significant wind factors: >20kt 240-300, >10kt 150-210 with ceiling <800 ft and/or visibility <1 1/2 mi.

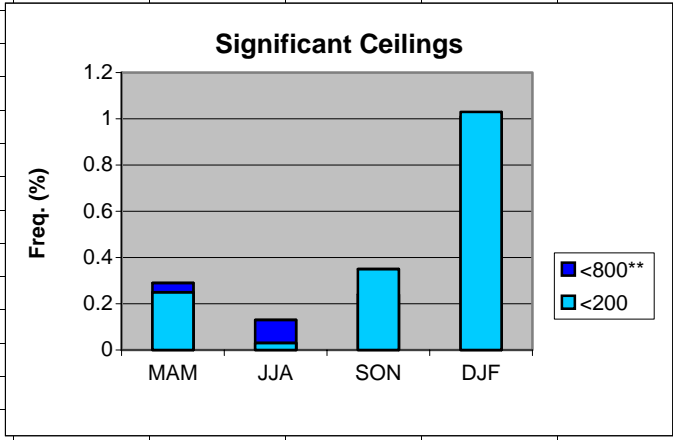
	A	B	C	D	E	F	G	H	I	J	K
1	Thunderstorms										
2											
3		Station	50 mi			Daily Probability					
4	MAM	0.39	0.8		MAM	12					
5	JJA	1.07	2.0		JJA	27					
6	SON	0.22	0.5		SON	7					
7	DJF	0.02	0.1		DJF	2					
8											
9											
10											
11											
12											
13											
14											
15											
16											
17											
18											
19											
20											
21											

Cell: A1

Comment: Charlie Liles:

The first graph shows the seasonal average hourly daily frequencies of thunderstorms at the station and within 50 miles. The second graph shows the seasonal average daily probability of thunderstorms within 50 miles of the station.

	A	B	C	D	E	F
1	Ceilings					
2		MAM	JJA	SON	DJF	
3	<800**	0.29	0.13	0.24	1.01	
4	<200	0.25	0.03	0.35	1.03	
5						
6						
7	800 foot ceiling requires wind >10kt 150-210.					
8						
9						
10						
11						
12						
13						
14						
15						
16						
17						
18						
19						
20						
21						

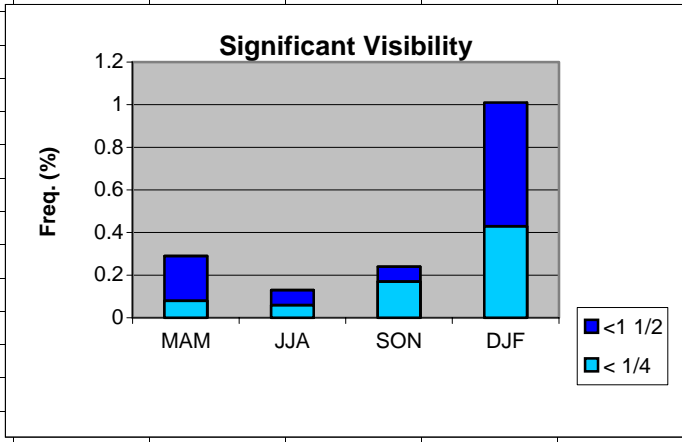


Cell: A1

Comment: Charlie Liles:

800 foot ceiling is significant only if wind is >10kt 150-210.

	A	B	C	D	E	F
1	Visibility					
2		MAM	JJA	SON	DJF	
3	<1 1/2	0.29	0.13	0.24	1.01	
4	< 1/4	0.08	0.06	0.17	0.43	
5						
6	1 1/2 mile conditional with wind >10kt 150-210					
7						
8						
9						
10						
11						
12						
13						
14						
15						
16						
17						
18						
19						
20						

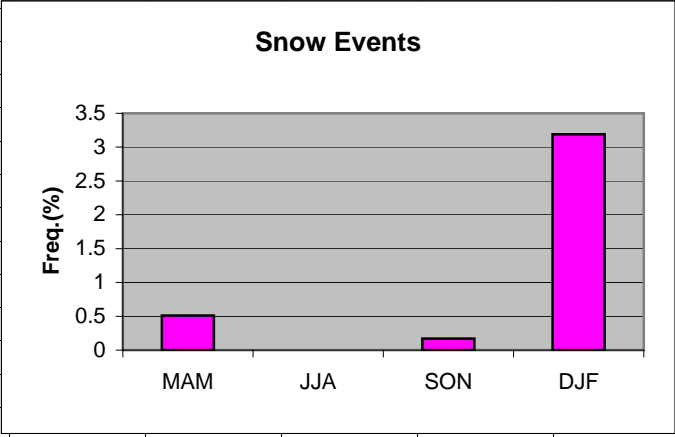


Cell: A1

Comment: Charlie Liles:

1 1/2 mile visibility is significant only if wind is >10kt 150-210.

	A	B	C	D	E	F	G	H
1	Snow Events							
2								
3	MAM	0.51						
4	JJA	0						
5	SON	0.17						
6	DJF	3.19						
7								
8								
9								
10								
11								
12								
13								
14								
15								
16								
17								
18								
19								



	A	B	C	D	E	F	G	H
1	Freezing Rain/drizzle/Ice Pellets							
2								
3	MAM	0.17						
4	JJA	0						
5	SON	0.12						
6	DJF	0.88						
7								
8								
9								
10								
11								
12								
13								
14								
15								
16								
17								
18								
19								

