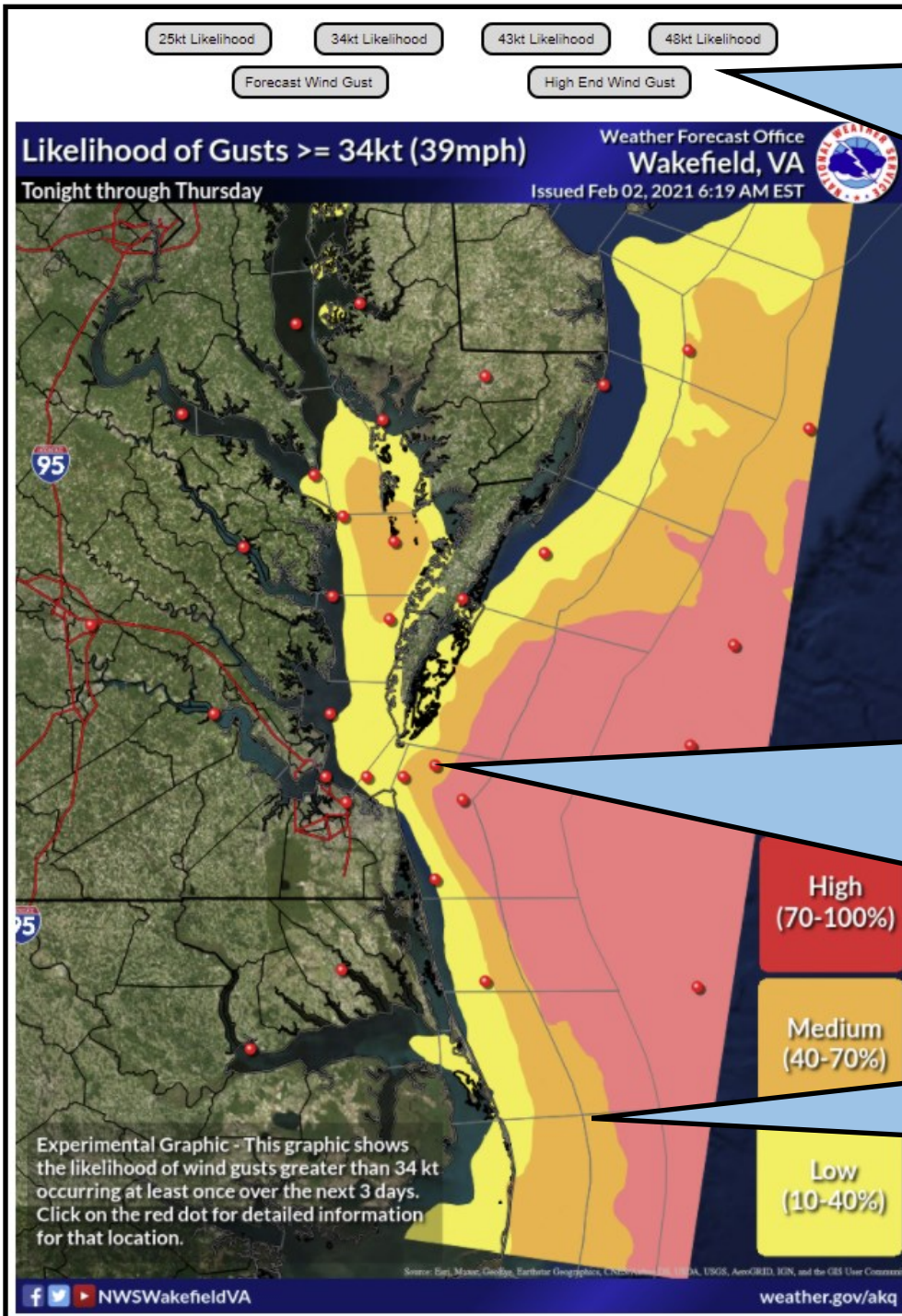




## Experimental Wind Likelihood and Probabilities

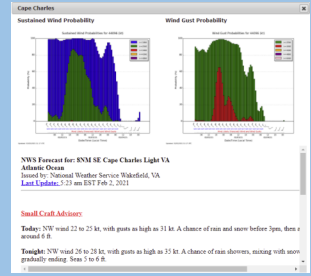
<https://weather.gov/akq/windprob>

The experimental forecast wind probabilities represent the likelihood of selected wind speeds occurring over the next 3 days (72 hours). Wind probabilities are to be used for planning purposes only. Official NWS marine forecasts and bulletins accompany the forecast wind probabilities and should always be referred to as the official forecast.



Hover over (or click on) the buttons to view a map of our choice. The top four likelihood buttons represent peak wind probabilities. The bottom two forecast buttons represent the NWS Forecast (maximum Wind Gust over the next 72 hours in addition to the potential High End Wind Gust possible.

Click on any RED DOT, point location, on the map to view hourly wind probabilities and official NWS point forecasts and bulletins for the location. See an explanation of the Point Probabilities and Forecast interface on the next page



Map colors represent the probability of experiencing the wind speed selected by the top 4 buttons above the map. Thresholds represent Low (10-40%), Medium (40-70%) and High (70 to 100%) likelihoods.



# Point Probability and Forecast Pages

**Ches Light**

**Sustained Wind Probability**

**Wind Gust Probability**

Hourly Forecast Probabilities for Sustained Wind and Wind Gusts through 72 hours

Click on the SUSTAINED WIND or WIND GUST PROBABILITY chart to enlarge (see Probability Chart below)

**NWS Forecast for: Chesapeake Light VA Atlantic Ocean**  
 Issued by: National Weather Service Wakefield, VA  
 Last Update: 5:23 am EST Feb 2, 2021

**Small Craft Advisory**

**Today:** NW wind 23 to 26 kt, with gusts as high as 32 kt. A chance of rain and snow before noon, then Seas around 7 ft.

**Tonight:** NW wind around 28 kt, with gusts as high as 35 kt. A chance of rain and snow showers before

**Wednesday:** NW wind 22 to 25 kt, with gusts as high as 31 kt. Mostly cloudy, then gradually becoming

Official NWS Marine Forecast including any Marine Headlines which may be in effect. Click on the Marine Headline (e.g. Small Craft Advisory) to read the official bulletin

## Sustained / Wind Gust Probability Chart

Wind Gust Probabilities for XCLT (kt)

Forecast Wind Probability Chart. Forecast wind probabilities are provided hourly in local time through 72 hours. Probabilities are provided for winds greater than or equal to 25 kt, 34 kt, 43 kt, 48 kt and 64 kt).

Wind bars and values listed at the bottom of the chart represent the OFFICIAL NWS WIND FORECAST for the point location. Note: wind bars represent wind direction and sustained wind speed. The G## represents forecast wind gust speed in kts.

Updated: 02/02/2021 18:18 UTC