

...VIRGINIA BEACH DAMAGE SURVEY RESULTS...

A SURVEY OF THE DAMAGE IN VIRGINIA BEACH REVEALED 3 SEPARATE EVENTS RELATED TO THE THURSDAY AFTERNOON THUNDERSTORMS. TWO OF THESE EVENTS WERE STRAIGHT LINE WIND EVENTS...THE THIRD WAS A BRIEF [TORNADO](#) TOUCHDOWN. BELOW IS A DESCRIPTION OF THE EVENTS IN CHRONOLOGICAL ORDER.

EVENT 1 - [MICROBURST](#) IN THE AREA OF NORFOLK AVE...MEDITERRANEAN AVE... PINWOOD DRIVE AND LAKE [DR](#). WINDS ESTIMATED BETWEEN 65 AND 70 MPH. SEVERAL LARGE TREES DOWN...SOME OF WHICH BROUGHT DOWN [POWER](#) LINES AND [POWER](#) POLES. A CHURCH STEEPLE WAS BLOWN OFF...AND A CAR IN THE CHURCH PARKING LOT WAS OVERTURNED. ALL DAMAGE ORIENTED FROM SOUTHEAST TO NORTHWEST. TIME ESTIMATED AROUND 330 PM.

EVENT 2 - EF0 [TORNADO](#)

LOCATION...BETWEEN ARCTIC AVE AND PACIFIC AVE JUST SOUTH OF 16TH ST
NORTHEASTWARD TO THE OCEAN BETWEEN 17TH AND 18TH ST.

DATE...JULY 10 2014

ESTIMATED TIME...3:35 PM TO 3:36 PM EDT

MAXIMUM EF-SCALE RATING...EF-0

ESTIMATED MAXIMUM [WIND SPEED](#)...70 TO 75 MPH

MAXIMUM PATH WIDTH...30 YARDS

PATH LENGTH...0.35 MILES

BEGINNING [LAT](#)/LON...36.8432N / 75.9763W

ENDING [LAT](#)/LON...36.8472N / 75.9726W

* FATALITIES...0

* INJURIES...10

* DAMAGE DETAILS...SIGNIFICANT DAMAGE TO HOME FROM ROOF BEING BLOWN OFF. DAMAGE TO SEVERAL OTHER STRUCTURES INCLUDING SCHOOL GYMNASIUM. LARGE [POOL](#) WINDOW BLOWN OUT.

EVENT 3 - STRAIGHT LINE [DOWNBURST](#) WIND DAMAGE IN THE PRINCESS ANNE COUNTRY CLUB AREA. SEVERAL LARGE TREES DOWN...SOME ON OR NEAR HOMES. A COUPLE OF TREES FELL ONTO CARS. WINDS ESTIMATED AT 65 TO 70 MPH. TIME ESTIMATED TO BE AROUND 345 PM.

NOTE...THE INFORMATION IN THIS STATEMENT IS PRELIMINARY AND SUBJECT TO CHANGE PENDING FINAL REVIEW OF THE EVENT(S) AND PUBLICATION IN [NWS STORM DATA](#).



VA Beach Tornado

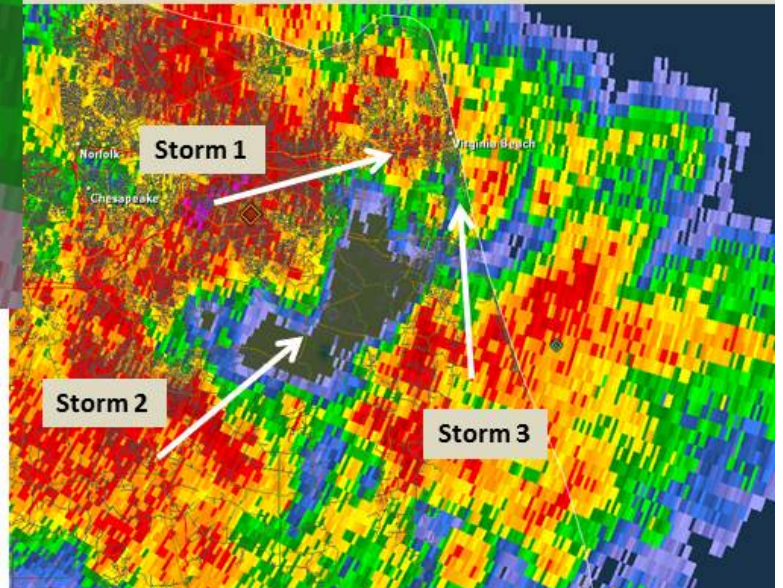
July 10, 2014 - 335pm

Radar Storm Relative Velocity at 329 pm.
Circulation was evident on radar for only 2 to 4 minutes.



Three individual severe storms moving across Chesapeake, Norfolk and VA Beach all converged near 17th St in VA Beach. The merger of the 3 severe storms resulted in the formation of a brief tornado. Storm mergers such as this are known to generate brief tornados on occasion. Storm 1 below had already caused wind damage in Capron and Suffolk and produced tennis ball size hail at Lynnhaven Mall.

Radar Base Reflectivity at 315 pm showing 3 storms converging on VA Beach.



These severe thunderstorms were very damaging producing winds of 70 to 80 mph from as far west as Emporia east across southeast VA. Severe Thunderstorms Warnings were issued for all the storms highlighting damaging winds, very large hail and the need to take cover. Remember wind is wind and severe thunderstorms can be just as dangerous as tornados and in some cases, more so.