

# Drought Information Statement for The Texas and Oklahoma Panhandles

Valid May 21, 2026

Issued By: WFO Amarillo

Contact Information: [sr-ama.webmaster@noaa.gov](mailto:sr-ama.webmaster@noaa.gov)

- This product will be updated on or before June 21st 2026.
  - Please see all currently available products at <https://drought.gov/drought-information-statements>.
  - Please visit <https://www.weather.gov/AMA/DroughtInformationStatement> for previous statements.
  - Please visit [https://www.drought.gov/drought-status-updates/\[link\]](https://www.drought.gov/drought-status-updates/[link]) for regional drought status updates.
- 
- Temperatures continued to stay well above average for the time of year with little to no beneficial rainfall.
  - Rainfall remains absent to minimal with drought conditions persisting or worsening.



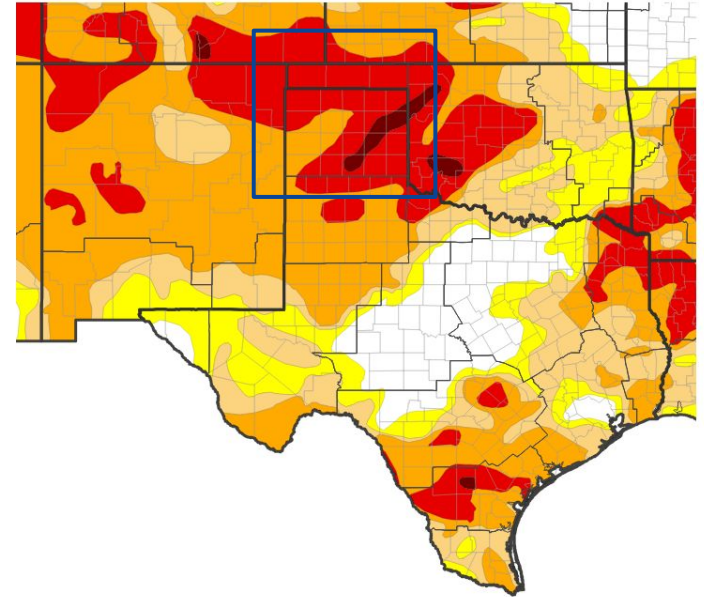


# U.S. Drought Monitor

Link to the [latest U.S. Drought Monitor](#) for [The Southern Plains]

- Drought intensity and Extent
  - **D4 (Exceptional Drought)**: A swath running from Armstrong up to Hemphill, including mostly Gray and Roberts County
  - **D3 (Extreme Drought)**: All of the Oklahoma Panhandle, the northern row of the Texas Panhandle and the central to southeastern Texas Panhandle that is not is D4.
  - **D2 (Severe Drought)**: Northwest portions of Deaf Smith and Potter County. Moore and Oldham County. Southeast Hartley County.
  - **D1 (Moderate Drought)**: None
  - **D0: (Abnormally Dry)**: None

U.S. Drought Monitor



U.S. Drought Monitor



Source(s): NDMC, NOAA, USDA, NASA; image courtesy of Drought.gov

Data Valid: 05/12/26



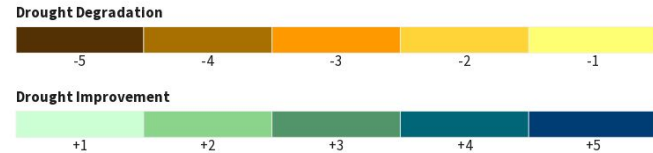
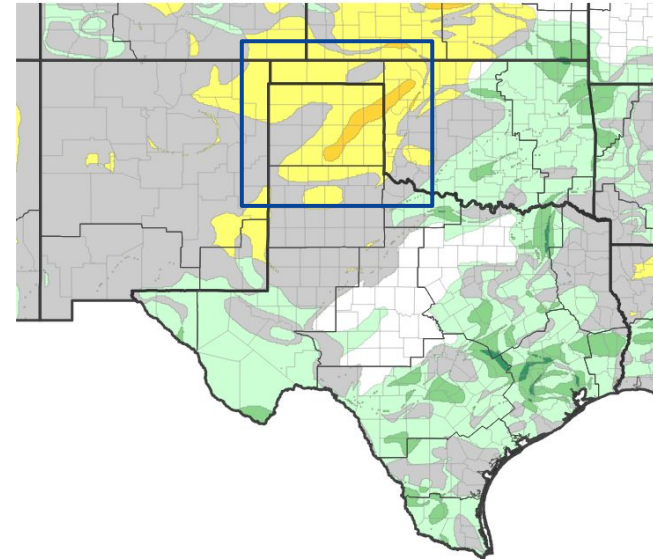


# Recent Change in Drought Intensity

Link to the latest [4-week change map](#) for [The Southern Plains]

- Four Week Drought Monitor Class Change.
  - Drought Worsened: Parts of the Oklahoma Panhandle and the central Texas Panhandle saw 1 to 2 category degradations in drought.
  - No Change: Parts of Moore, Potter, Hartley, Oldham, and Deaf Smith Counties.
  - Drought Improved: None

U.S. Drought Monitor 4-Week Change Map



Source(s): NDMC, NOAA, USDA, NASA; image courtesy of Drought.gov Data Valid: 05/12/26

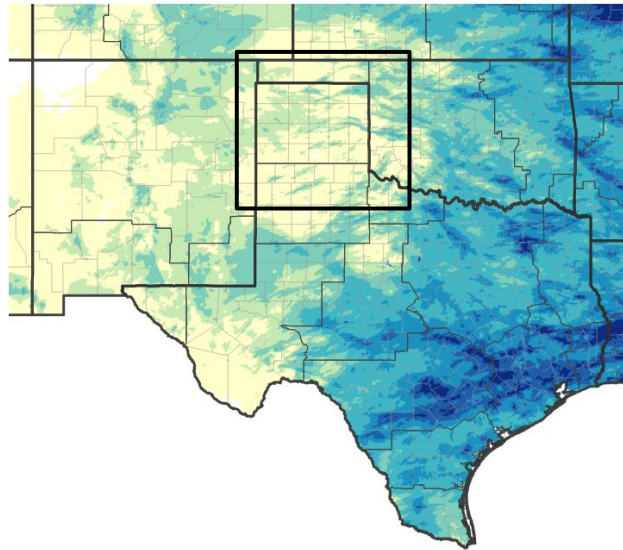




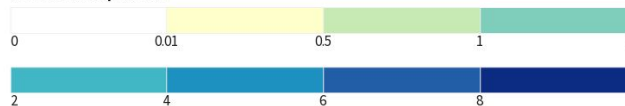
# Precipitation

- An exceptionally dry May has taken place thus far with rain amounts, if any, measuring in the hundredths to maybe a tenth or two.
- There have been very few isolated areas measuring greater than a few tenths.

### 30-Day Precipitation Accumulations (Inches)

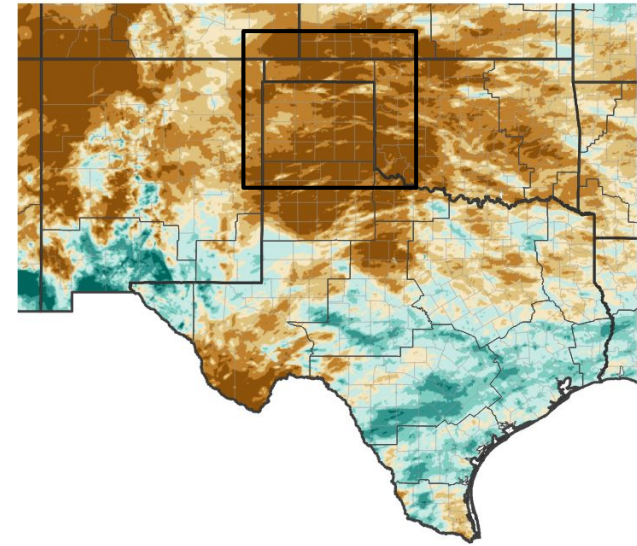


#### Inches of Precipitation

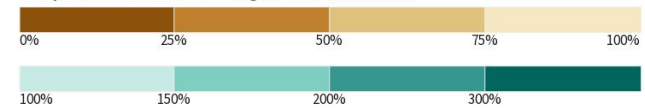


Source(s): National Weather Service Multi-Radar Multi-Sensor System; image courtesy of Drought.gov Last Updated: 05/20/26

### 30-Day Percent of Normal Precipitation



#### Precipitation Shown as a Percentage of Normal Conditions



Source(s): National Weather Service Multi-Radar Multi-Sensor System; image courtesy of Drought.gov Last Updated: 05/20/26

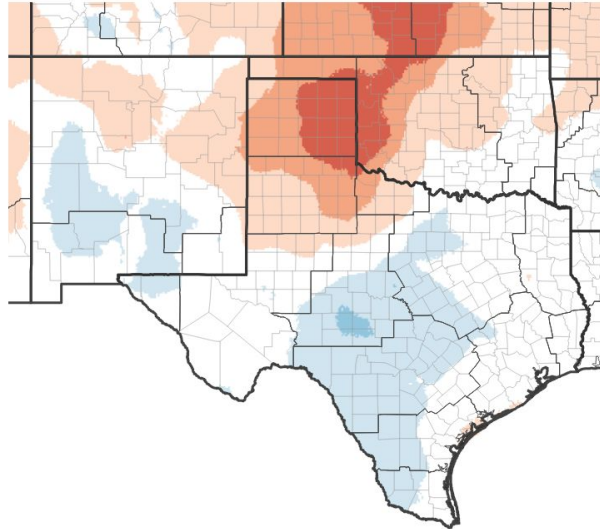




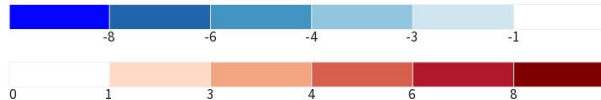
# Temperature

- Over the last 30 days, temperatures continue to average 3 to 6 degrees above normal across the combined Panhandles.
- Over the last 7 days, temperatures have averaged 6 to 8 degrees above normal.

30-Day Temperature Anomaly

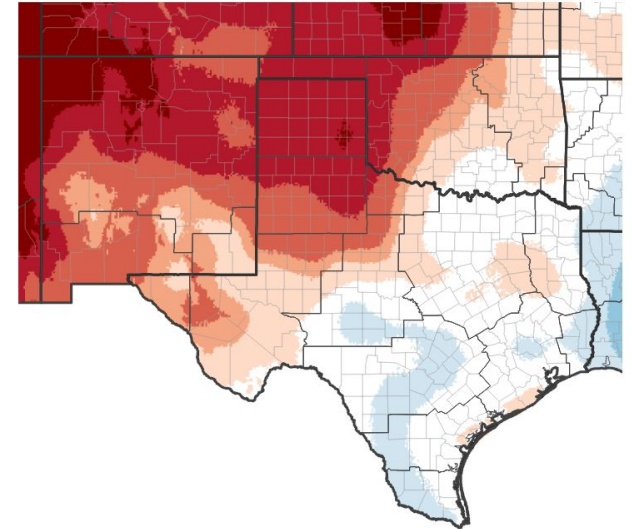


Departure from Normal Max Temperature (°F)

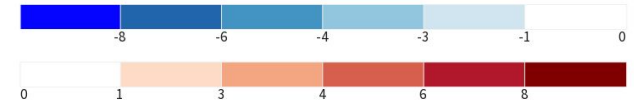


Source(s): NOAA's National Centers for Environmental Information; image courtesy of Drought.gov Data Valid: 05/15/26

7-Day Temperature Anomaly



Departure from Normal Max Temperature (°F)



Source(s): NOAA's National Centers for Environmental Information; image courtesy of Drought.gov Data Valid: 05/15/26





# Summary of Impacts

Links: See/submit [Condition Monitoring Observer Reports \(CMOR\)](#) and view the [Drought Impacts Reporter](#)

## Hydrologic Impacts

- There are no known impacts at this time

## Agricultural Impacts

- Non-irrigated crops are unable to grow at this time.

## Fire Hazard Impacts

- Lack up green-up is leaving grasses and brush very volatile at the end of April going into the end of May and beginning of June.

## Other Impacts

- There are no known impacts at this time

## Mitigation Actions

- Please refer to your municipality and/or water provider for mitigation information.
- Avoid activities involving sparks and flames on elevated and critical fire weather days.
- Clear brush from homes and property to mitigate threats of wildfires.

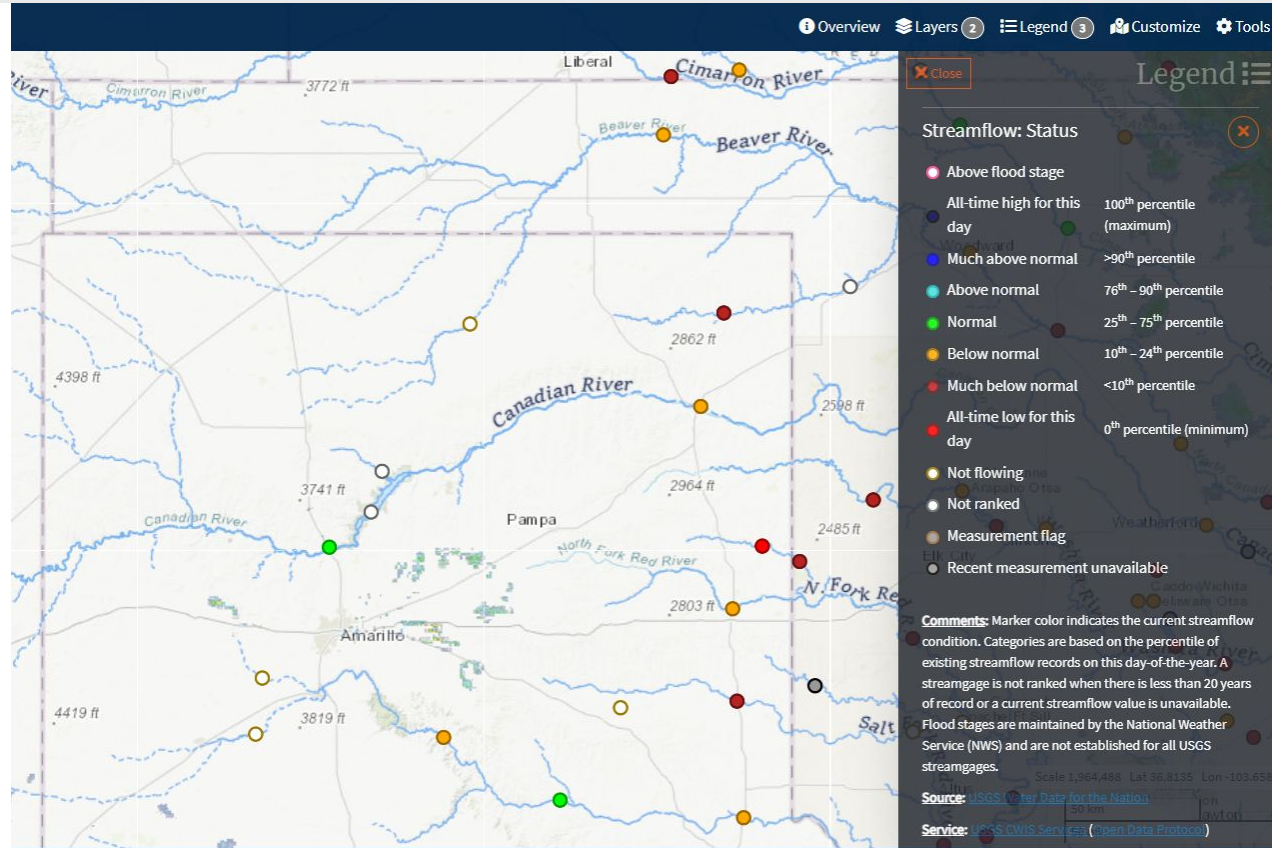




# Hydrologic Conditions and Impacts

- Streamflow is near normal for gauges in the central to western combined Panhandles; while eastern Panhandle gauges are below normal to much below normal.

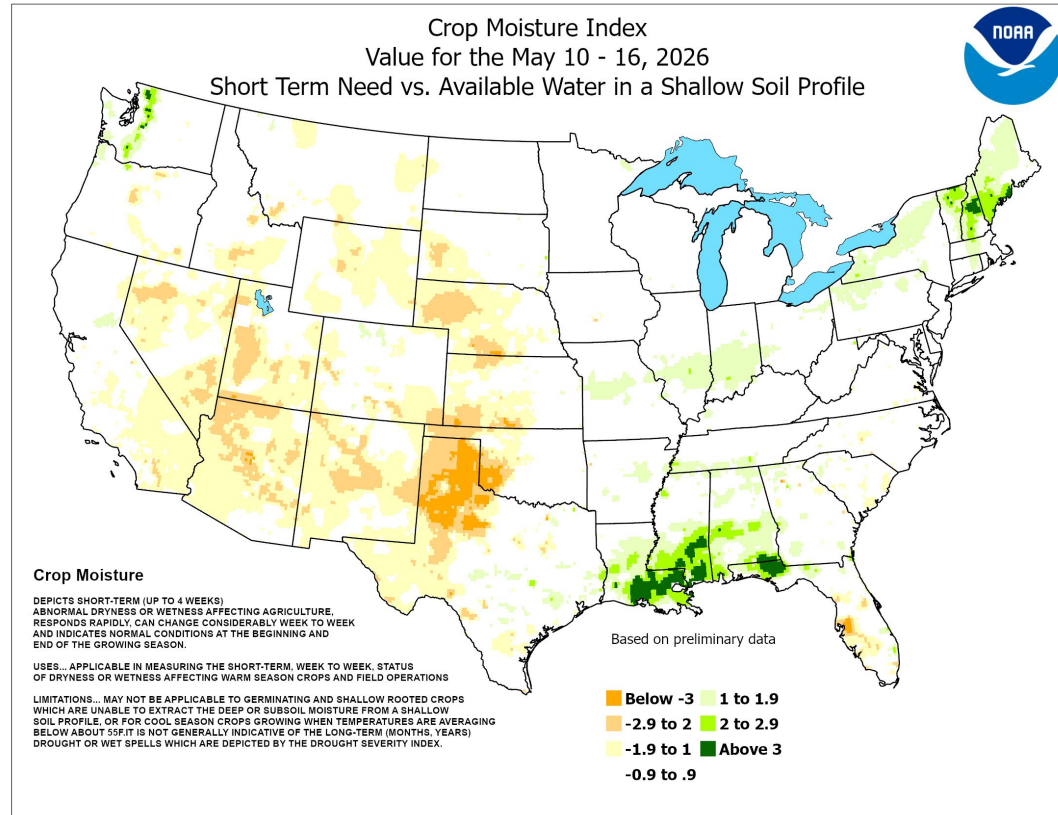
<https://dashboard.waterdata.usgs.gov/app/nwd/en/?aoi=default>





# Agricultural Impacts

- Crop moisture remains has worsened.
  - The eastern Texas Panhandle is now seeing Severe Drought (-3.0 to -3.9).
  - The western Texas Panhandle and the Oklahoma Panhandle now seeing Excessive Dryness (-2.0 to -2.9) with crop growth halted.





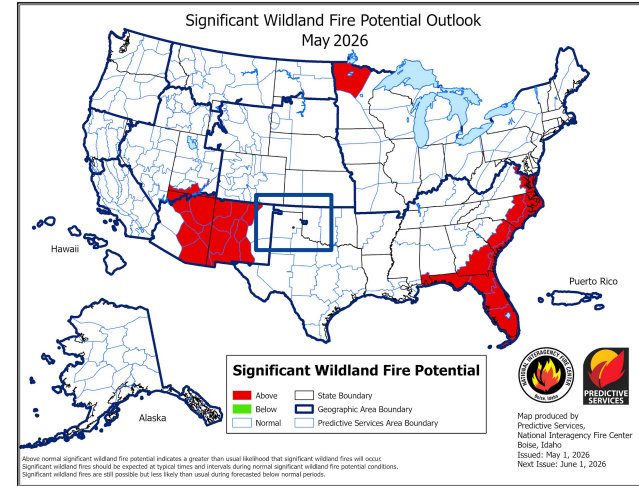
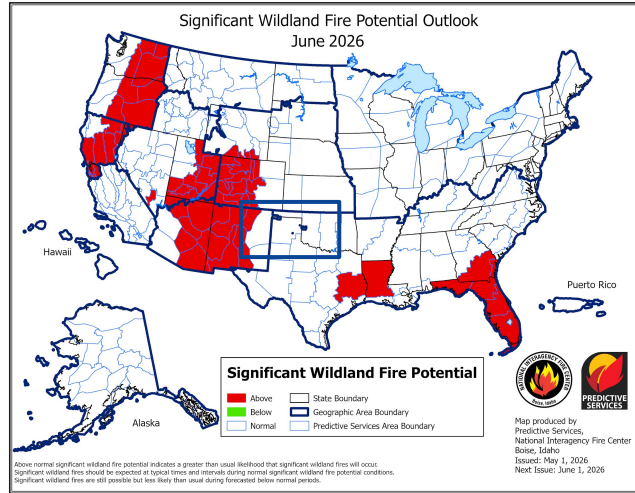
# Fire Hazard Impacts

Link to [Wildfire Potential Outlooks from the National Interagency Coordination Center](#).

- Vegetation remains dry and dormant as green-up has yet to take place
  - Fuels remain volatile
- All counties except Beaver remain in a burn ban in the combined Panhandles.

Latest TX Burn Ban map available [here](#).

Latest OK Burn Ban map available [here](#).

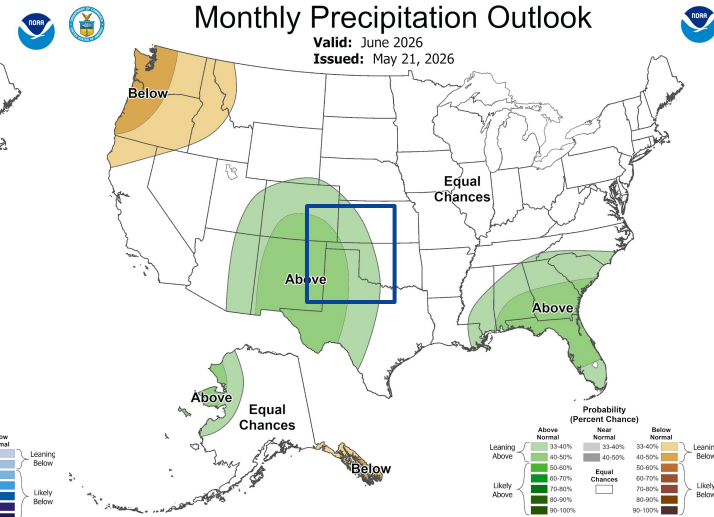
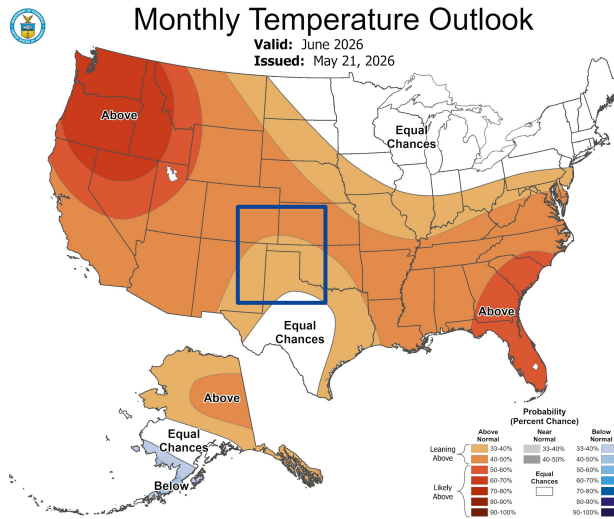




# Long-Range Outlooks

The latest monthly and seasonal outlooks can be found on the [CPC homepage](#)

- The combined Oklahoma and Texas Panhandles are slightly favoring above normal chances for precipitation during the month of June
- The combined Panhandles are favoring above normal temperatures for the month of June. (30-40% chance for temperatures to average above normal for the entire month of June)



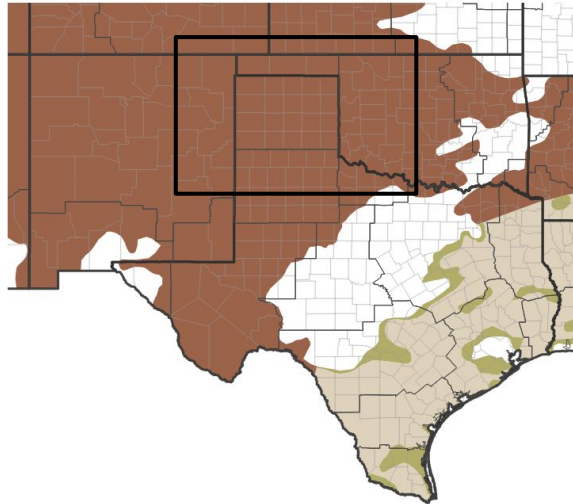


# Drought Outlook

The latest monthly and seasonal outlooks can be found on the [CPC homepage](#)

- Drought conditions expected to persist across the combined Oklahoma and Texas Panhandles from late spring into early summer.

1-Month Drought Outlook for May 1, 2026–May 31, 2026



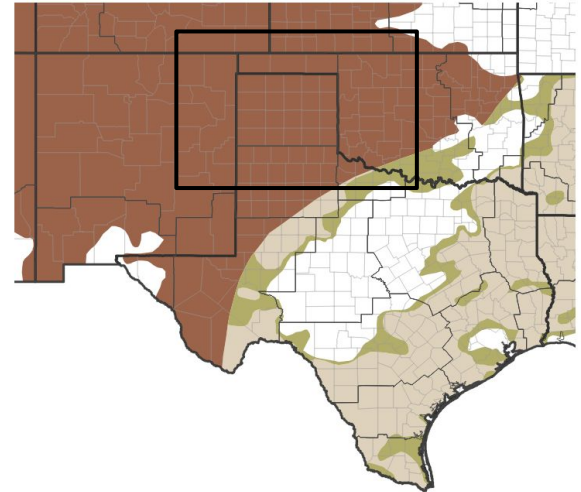
Drought Is Predicted To...



Source(s): Climate Prediction Center; image courtesy of Drought.gov

Last Updated: 04/30/26

Seasonal (3-Month) Drought Outlook for April 30, 2026–July 31, 2026



Drought Is Predicted To...



Source(s): Climate Prediction Center; image courtesy of Drought.gov

Last Updated: 04/30/26

Links to the latest:

[Climate Prediction Center Monthly Drought Outlook](#)

[Climate Prediction Center Seasonal Drought Outlook](#)



National Oceanic and Atmospheric Administration

U.S. Department of Commerce

National Weather Service  
Amarillo, Texas