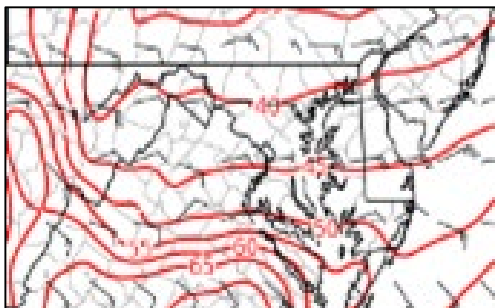


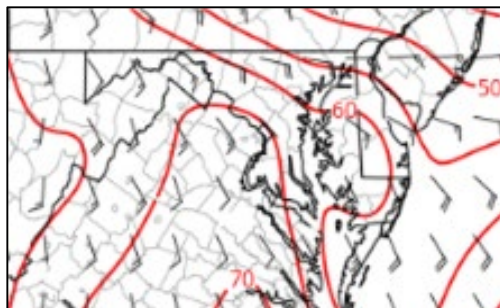
# 15 April 2018 back-door cold front: NAM 3 km vs GFS and TS ramifications

A back door cold front moved well S of the DC Metros on Sunday, 15 April 2018. The NAM 3 km forecast this front very well, picking up on it 48-60 hrs in advance and remaining consistent with its (quite correct) forecast. The GFS did not forecast this front well, not even hinting at its strength/southward extent until 6 hrs before it pushed through the DC Metros. Because the front moved so far S, IFR cigs with dz/shra blanketed the DC Metros through much of the afternoon/evening, while TS that moved NE weakened as they approached the DC Metros.

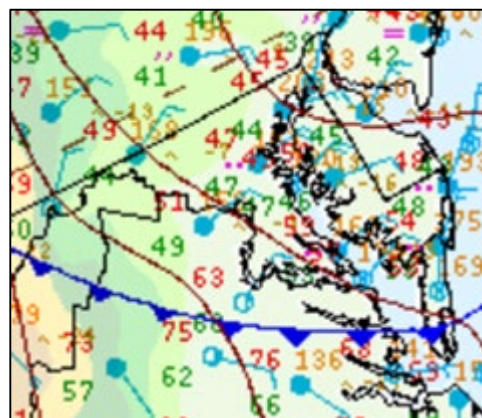
NAM 3 km 48 hr fcast: 8 pm 15 Apr 18



GFS 48 hr fcast: 8 pm 15 Apr 18

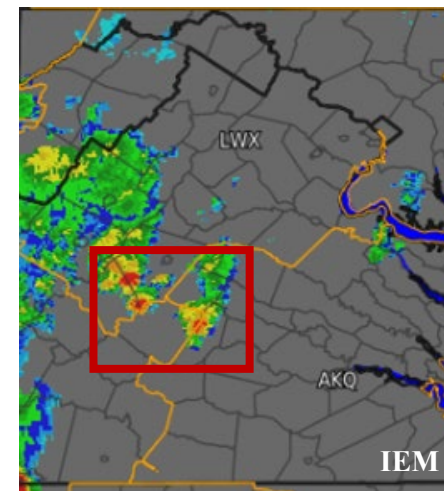


WPC Surface Analysis:  
2 pm 15 Apr 18

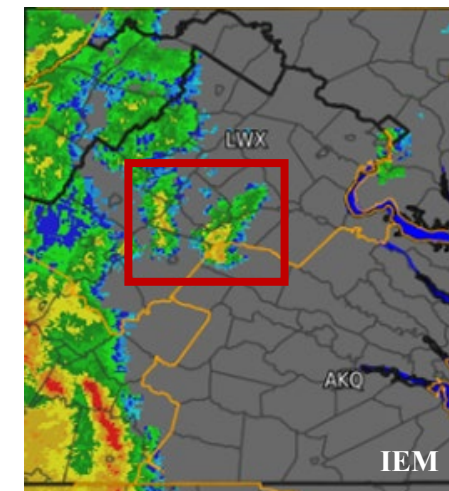


Early eve: TS move into stable air, dissipate

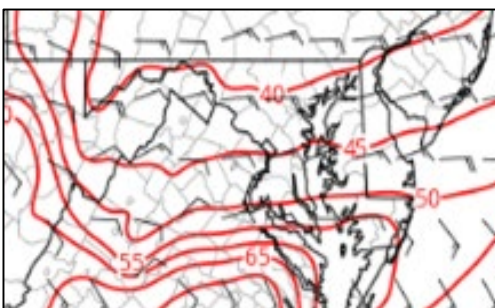
5:55 pm Base Reflectivity



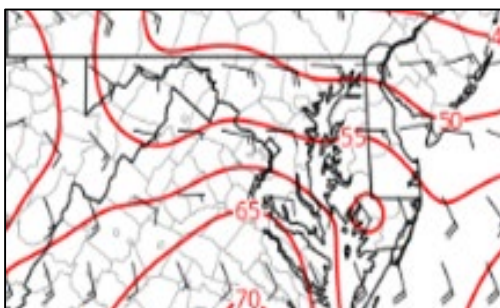
6:55 pm Base Reflectivity



NAM 3 km 12 hr fcast: 8 pm 15 Apr 18



GFS 12 hr fcast: 8 pm 15 Apr 18

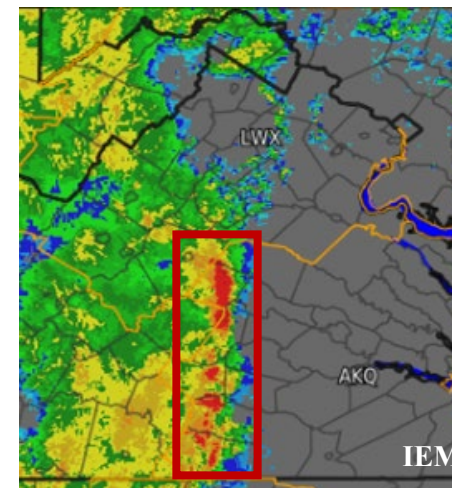


WPC Surface Analysis:  
8 pm 15 Apr 18

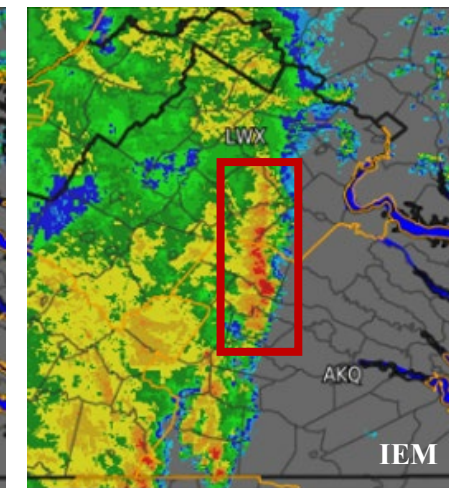


Later...strongest TS remain along/S of the front

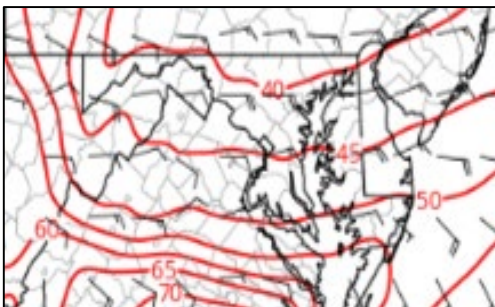
8:25 pm Base Reflectivity



9:40 pm Base Reflectivity



NAM 3 km 6 hr fcast: 8 pm 15 Apr 18



GFS 6 hr fcast: 8 pm 15 Apr 18

