

The **Aviation Digital Data Service** (**@adds**) makes available to the aviation community (through the internet) digital and graphical analyses, forecasts, and observations of meteorological variables. **@adds** provides easy access to National Weather Service aviation observations and forecasts by integrating this information in one location, and by providing visualization tools to assist in the application of this information for flight planning.

The objective of the National Weather Service (NWS) Aviation Weather Services Program is to provide quality weather forecast information and services to the aviation community for the protection of life and property, and to increase the efficiency of the National Airspace System.

The core goal of @adds is to:

Provide better information to pilots on the location and severity of weather hazard areas, as well as a better methods of using weather information to make safe, informed decisions on how and when to conduct a flight.

<http://adds.aviationweather.gov>

@adds

Aviation
Digital
Data
Service



<http://adds.aviationweather.gov>

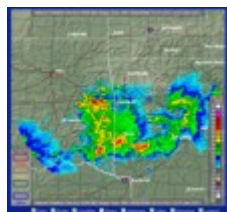
Aviation Weather Center

7220 NW 101st Terrace,
Kansas City, Missouri, 64153
Phone (816) 584-7200
Fax (816) 880-0650

A PICTURE IS WORTH A THOUSAND CONTRACTIONS...

The internet has revolutionized the way pilots obtain pre-flight weather information. Not only are traditional text products more easily available, but now these products have been joined by graphical weather displays.

In addition to their value as a supplement to the text, these graphical displays often contain information that can not be conveyed



adequately by text.

In order to make full use of the internet as a conduit for this pre-flight weather information, and ultimately to increase flight safety, NOAA and the FAA have partnered to create the Aviation Digital Data Service (**adds**). Now anytime you have access to an internet connection, you have access to official National Weather Service products displayed by multiple means ranging from basic text to innovative graphics.

NAVIGATING **adds**

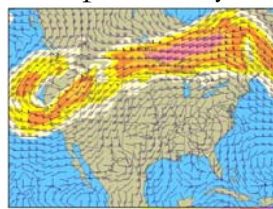
From the moment you first arrive at the **adds** web site you'll find that it's laid out in an orderly manner with attention paid to such details as accessibility and ease of navigation.



Information on the **adds** site is divided into the following categories:

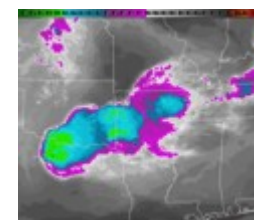
- | | |
|---------------|---------------|
| - METARs | - TAFs |
| - PIREPs | - AIR/SIGMETs |
| - Satellite | - Radar |
| - Turbulence | - Icing |
| - Convection | - Winds/Temps |
| - Prog Charts | - Java Tools |

Each of these categories will take you to an individual page that contains multiple ways to view the information.



These multiple views mean that no matter what the speed of your internet connection you'll be able to get aviation weather data vital to aeronautical decision making as quickly and efficiently as possible.

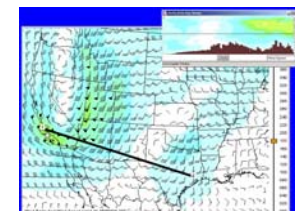
INTERACTIVE TOOLS!



On the **adds** web site you'll also notice a link entitled "Java Tools." These tools provide a

means to customize various weather displays to present only the information you need for a specific geographic area. They also provide a means to overlay multiple sets of data onto a single display.

In addition, most data sets can be viewed at various levels of the atmosphere and can even be loaded into the **adds** Flight Path Tool to provide a vertical cross section of an intended route of flight.



adds is maintained and operated by the NOAA Aviation Weather Center one of the National Weather Service's National Centers for Environmental Prediction.



adds was developed by the National Center for Atmospheric Research and is sponsored by the Federal Aviation Administration.