

Storm Data and Unusual Weather Phenomena - August 2012

Location	Date/Time	Deaths & Injuries	Property & Crop Dmg	Event Type and Details
----------	-----------	-------------------	---------------------	------------------------

ALABAMA, Central

(AL-Z019) CALHOUN, (AL-Z021) CLEBURNE, (AL-Z027) TALLADEGA, (AL-Z028) CLAY, (AL-Z029) RANDOLPH, (AL-Z036) COOSA, (AL-Z037) TALLAPOOSA, (AL-Z038) CHAMBERS, (AL-Z043) ELMORE, (AL-Z044) MONTGOMERY, (AL-Z045) MACON, (AL-Z046) BULLOCK, (AL-Z047) LEE, (AL-Z048) RUSSELL, (AL-Z050) BARBOUR

08/01/12 00:00 CST	0	Drought
08/31/12 23:59 CST	0	

Periods of heavy rain fell across portions of Central Alabama during the first half of the month August. This allowed drought conditions to improve slightly for Talladega, Montgomery, Bullock, Chambers and Barbour Counties. Most counties across the southeast Central Alabama continued to see Extreme (D3) drought conditions through the end of the month.

(AL-Z025) SHELBY, (AL-Z035) CHILTON, (AL-Z041) AUTAUGA, (AL-Z042) LOWNDES, (AL-Z049) PIKE

08/01/12 00:00 CST	0	Drought
08/31/12 23:59 CST	0	

An abundance of rain fell across the central and western portions of Central Alabama during the first half of the month of August, with some locations receiving over 5 inches. This allowed conditions to improve for several counties on the western edge of the worse drought conditions, dropping them below severe drought criteria.

(AL-Z023) TUSCALOOSA, (AL-Z030) SUMTER, (AL-Z031) GREENE, (AL-Z032) HALE, (AL-Z033) PERRY, (AL-Z037) TALLAPOOSA, (AL-Z039) MARENGO, (AL-Z040) DALLAS, (AL-Z042) LOWNDES, (AL-Z044) MONTGOMERY, (AL-Z045) MACON, (AL-Z050) BARBOUR

08/01/12 12:00 CST	0	Heat
08/02/12 12:00 CST	0	

A strong upper level ridge across the southeastern Continental United States combined with a moist airmass across Central Alabama for the beginning of August. Heat index values rose to over 105 degrees on August 1 for portions of the area. On August 2, two locations warmed rather quickly, with heat index values briefly reaching over 105 degrees, before thunderstorms brought some relief to the area. Heat related illnesses were reported to the Alabama Department of Public Health through August, despite much of the month not reaching heat advisory criteria and for counties which also never met heat advisory criteria. A total of 79 illnesses were reported across Central Alabama for the month. Cumulative effects of the heat continued into early September, despite temperatures not warming above established thresholds and an additional eight illnesses were reported across the area.

SUMTER COUNTY --- 0.9 NW LIVINGSTON [32.59, -88.19], 0.8 NW LIVINGSTON [32.59, -88.19], 0.7 NW LIVINGSTON [32.59, -88.19], 0.8 NNW LIVINGSTON [32.59, -88.19]

08/02/12 09:00 CST	0	Flash Flood (due to Heavy Rain)
08/02/12 15:00 CST	0	Source: Public

Heavy rainfall resulted in water flowing over roadways, resulting in several road closures. The University of West Alabama had 4 roads that were impassable, with 12 to 18 inches of flowing water over them. Additionally, two feet of water covered the entire football field.

MARION COUNTY --- PULLTIGHT [34.02, -87.78]

08/02/12 15:30 CST	0	Heavy Rain
08/02/12 17:30 CST	0	Source: Emergency Manager

Heavy rainfall led to several roadways being covered in water.

JEFFERSON COUNTY --- 0.7 N WOODLAWN [33.54, -86.80]

08/04/12 18:15 CST	0	Heavy Rain
08/04/12 20:00 CST	0	Source: Newspaper

A combination of brief heavy rainfall and poor drainage led to several vehicles being stranded in downtown Birmingham.

Central Alabama was under an active northwesterly flow during the first week of August. Numerous thunderstorm complexes and outflow boundaries resulted in thunderstorms most days. With precipitable water values over 2 inches and weak wind fields aloft, thunderstorms were slow moving and produced heavy rainfall. Some of these thunderstorm complexes resulted in localized flash flooding.

LAMAR COUNTY --- 0.7 S CREWS [33.89, -88.13], 0.7 ENE CREWS [33.90, -88.12], 0.7 NE CREWS [33.91, -88.12], 0.4 N CREWS [33.91, -88.13]

08/06/12 09:00 CST	0	Flash Flood (due to Heavy Rain)
08/06/12 12:00 CST	0	Source: Emergency Manager

Storm Data and Unusual Weather Phenomena - August 2012

Location	Date/Time	Deaths & Injuries	Property & Crop Dmg	Event Type and Details
----------	-----------	-------------------	---------------------	------------------------

A period of heavy rainfall led to over 6 inches of flowing water covering Highway 278 in Sulligent, causing it to be closed.

TUSCALOOSA COUNTY --- 1.5 NNE RIVER VIEW [33.24, -87.54]

	08/07/12 12:50 CST	0		Heavy Rain
	08/07/12 14:00 CST	0		Source: Broadcast Media

A period of brief heavy rainfall and poor drainage issues led to approximately a foot of standing water over several roadways in Tuscaloosa.

On August 6 and 7, a front stalled to the northwest of Central Alabama and outflow boundaries from convection along the front pushed into the area. These boundaries combined with a weakness in the upper level ridge pattern and a moist airmass resulted in thunderstorms and locally heavy rain.

ST. CLAIR COUNTY --- 1.5 NNE MOODY [33.60, -86.49]

	08/09/12 10:35 CST	0		Thunderstorm Wind (EG 50 kt)
	08/09/12 10:35 CST	0		Source: Emergency Manager

Several trees were reported down.

ST. CLAIR COUNTY --- 0.7 N WATTSVILLE [33.68, -86.28]

	08/09/12 10:52 CST	0		Thunderstorm Wind (EG 55 kt)
	08/09/12 10:52 CST	0		Source: 911 Call Center

Several trees were reported down in the Wattsville and Ragland areas.

SHELBY COUNTY --- 1.4 S NEW HOPE [33.35, -86.75], 0.3 W PARAMOUNT [33.32, -86.84], 0.5 NW KEYSTONE [33.27, -86.83], 1.9 SW SIMMSVILLE [33.31, -86.69]

	08/09/12 16:30 CST	0		Flash Flood (due to Heavy Rain)
	08/09/12 18:30 CST	0		Source: Law Enforcement

Several roads across northern Shelby County were impassible due to over 6 inches of flowing water over the roadway, including Highway 119 near Indian Springs Town Hall, as well as Cahaba Oaks Trail.

In response to a shortwave crossing the region, a cluster of thunderstorms developed in Mississippi and pushed into Central Alabama on Thursday, August 9. Instability across the local area was limited by cloud cover, but the airmass was rather moist with precipitable water values over 2 inches. Thunderstorms caused isolated wind damage and locally heavy rain.

TUSCALOOSA COUNTY --- 1.4 ENE CEDAR COVE [33.19, -87.30]

	08/10/12 16:45 CST	0		Hail (0.75 in)
	08/10/12 16:45 CST	0		Source: Public

SHELBY COUNTY --- 1.8 SE ACTON [33.33, -86.80]

	08/10/12 17:47 CST	0		Thunderstorm Wind (EG 55 kt)
	08/10/12 17:47 CST	0		Source: Public

Trees were reported down along Chandabrook Drive in Pelham, as well as near the intersection of Chelsea Road and Tara Drive in Chelsea.

BLOUNT COUNTY --- ONEONTA [33.95, -86.47]

	08/10/12 20:30 CST	0		Heavy Rain
	08/10/12 22:00 CST	0		Source: Fire Department/Rescue

Heavy rainfall and poor drainage led to approximately two feet of standing water over the roadway at the intersection of First Avenue East and Springville Boulevard in downtown Oneonta.

Ahead of a cold front stretching across the Tennessee Valley and Central Mississippi, scattered thunderstorms developed and moved into Central Alabama on Friday, August 10. Cloud cover kept instabilities low during much of the day. However, by late afternoon, skies cleared and instabilities increased with CAPE values over 3000 J/kg. Thunderstorms produced isolated wind damage and locally heavy rain.

TUSCALOOSA COUNTY --- 4.3 SSE NEW LEXINGTON [33.51, -87.65]

	08/13/12 11:20 CST	0		Thunderstorm Wind (EG 52 kt)
	08/13/12 11:20 CST	0		Source: Emergency Manager

A porch awning and roof of a single wide mobile home were blown off and two outbuildings sustained roof damage.

Storm Data and Unusual Weather Phenomena - August 2012

Location	Date/Time	Deaths & Injuries	Property & Crop Dmg	Event Type and Details
LAMAR COUNTY --- 1.3 ENE CREWS [33.91, -88.11], 1.4 NE CREWS [33.92, -88.11], 1.1 NE CREWS [33.91, -88.12], 1.1 NE CREWS [33.91, -88.11]	08/13/12 20:30 CST		0	Flash Flood (due to Heavy Rain)
	08/13/12 22:59 CST		0	Source: Emergency Manager
	Periods of heavy rainfall led to 6 inches of flowing water over Highway 278 in Sulligent, as well as Highway 18 in Vernon.			

On Monday, August 13, a shortwave resulted in thunderstorm development in Mississippi. As this activity moved east, it developed into a mesoscale convective system (MCS) and tracked across Central Alabama. The MCS weakened as it encountered a more stable environment across the eastern half of the state, but not before it caused isolated wind damage and flash flooding.

PICKENS COUNTY --- 3.5 NW CARROLLTON [33.30, -88.15]	08/18/12 04:12 CST		0	Thunderstorm Wind (EG 50 kt)
	08/18/12 04:12 CST		0	Source: Emergency Manager
	A tree was reported down on County Road 26, between Pine Grove and Carrollton.			

TUSCALOOSA COUNTY --- 2.1 NNE RALPH [33.08, -87.76]	08/18/12 04:40 CST		0	Thunderstorm Wind (EG 55 kt)
	08/18/12 04:40 CST		0	Source: Emergency Manager
	A tree was reported down on Sipsey Valley Road, west of Wesley Chapel Road.			

TUSCALOOSA COUNTY --- 1.4 S BOX SPGS [33.18, -87.48]	08/18/12 05:20 CST		0	Thunderstorm Wind (EG 60 kt)
	08/18/12 05:20 CST		0	Source: Emergency Manager
	Trees were reported down along Stone Hill Lane. Additionally, powerlines were reported down along Windermere Drive.			

BIBB COUNTY --- 0.9 SW LUCILLE [33.11, -87.16]	08/18/12 05:43 CST		0	Thunderstorm Wind (EG 60 kt)
	08/18/12 05:43 CST		0	Source: Law Enforcement
	Three trees were reported down along County Road 24.			

BIBB COUNTY --- 1.5 NNW WEST BLOCTON [33.14, -87.13]	08/18/12 05:47 CST		0	Thunderstorm Wind (EG 60 kt)
	08/18/12 05:47 CST		0	Source: Law Enforcement
	Two trees were downed in West Blockton.			

MARENGO COUNTY --- 0.7 N LINDEN [32.31, -87.80]	08/18/12 17:07 CST		0	Thunderstorm Wind (EG 70 kt)
	08/18/12 17:07 CST		0	Source: Emergency Manager
	Approximately 12 large hardwood trees were snapped or uprooted in the city of Lindon.			

On Saturday, August 18, a front slowly sagged southward into Central Alabama. Along this boundary, a mesoscale convective system (MCS) developed in Mississippi during the early morning hours, and track along and south of the front across Central Alabama. In the wake of this thunderstorm complex, additional storms developed through the day across the area but remained below severe limits. With dew points in the 70s and CAPE values rising near 3500 J/kg, the airmass was becoming increasingly unstable through the afternoon. A second MCS developed in Mississippi and pushed across south Central Alabama during the evening hours. This complex gradually weakened, but not before producing significant damage in Marengo county.

ALABAMA, North

(AL-Z001) LAUDERDALE, (AL-Z002) COLBERT	08/01/12 14:00 CST		0	Heat
	08/02/12 16:00 CST		0	

Temperatures exceeded 100 degrees on the 1st and 2nd of the month of August.

Storm Data and Unusual Weather Phenomena - August 2012

Location	Date/Time	Deaths & Injuries	Property & Crop Dmg	Event Type and Details
CULLMAN COUNTY --- 2.3 SSE EBENEZER [34.22, -86.91]				
	08/02/12 12:45 CST		0.10M	Lightning
	08/02/12 12:45 CST		0	Source: Newspaper

Lightning struck a home and produced a fire that destroyed the home.

CULLMAN COUNTY --- 3.0 W JONES CHAPEL [34.22, -87.10]				
	08/02/12 13:10 CST		10K	Thunderstorm Wind (EG 35 kt)
	08/02/12 13:11 CST	1	0	Source: Emergency Manager

Strong thunderstorm winds estimated at 40 mph knocked down a few small tree limbs and produced slight damage to an awning at a Texaco gas station near Addison, Alabama. The awning fell onto a vehicle at the Texaco gas station and slightly injured a person.

A strong storm knocked small tree limbs down, and tore the awning of a gas station roof, which struck a vehicle and caused a minor injury.

(AL-Z008) MARSHALL				
	08/02/12 13:00 CST	1	0	Heat
	08/02/12 13:00 CST		0	

Direct Fatalities: M80??

The combination of above normal temperatures in the mid to upper 90s with high humidity, led to a heat related death in Marshall County, Alabama.

COLBERT COUNTY --- 0.7 S MUSCLE SHOALS [34.74, -87.67]				
	08/04/12 14:25 CST		0	Lightning
	08/04/12 14:25 CST	1	0	Source: Newspaper

A female was struck by lightning. Condition was unknown.

MORGAN COUNTY --- 0.7 WSW DECATUR [34.61, -86.99], 0.5 W DECATUR [34.62, -86.99], 0.3 SW DECATUR [34.62, -86.98], 1.1 SE DECATUR [34.61, -86.97], 1.3 NNW FAIRVIEW [34.60, -86.96], 1.7 SSW DECATUR [34.60, -86.99]				
	08/04/12 15:47 CST		20K	Flash Flood (due to Heavy Rain)
	08/04/12 18:15 CST		0	Source: Trained Spotter

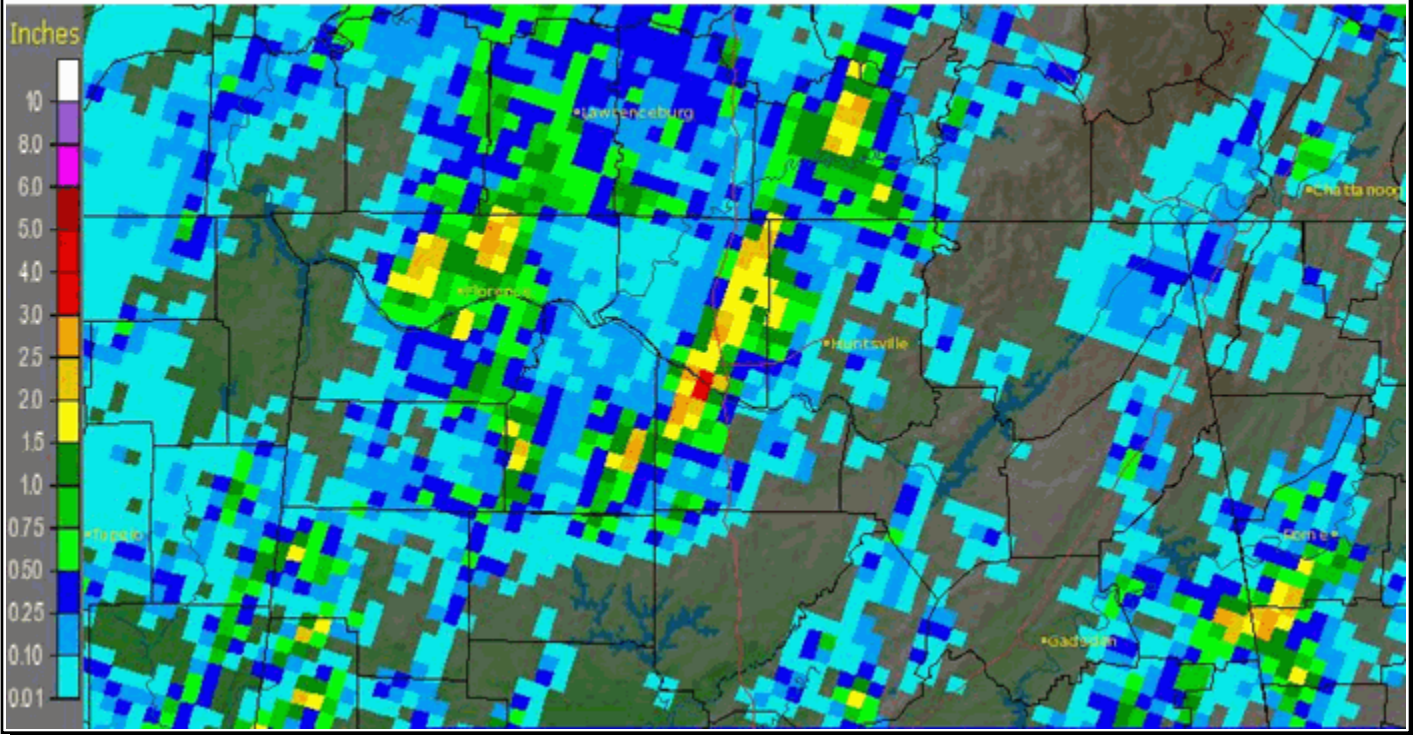
Rainfall of 2 to 3 inches in less than one hour, much of it occurring in less than one half hour, fell across downtown Decatur and nearby areas causing flash flooding. Several roads were closed or were impassible. A mother and child were stranded in their vehicle in flood water at the intersection of Eighth Street and Church Street Northeast. Flood water was up to the base of car windows on Lee Street at the Courthouse. The City Hall basement had flooding as well.

Scattered afternoon thunderstorms developed in an unstable and very moist air mass (precipitable water > 2.0 inches). The storms were slow moving and also produce frequent lightning and brief gusty winds. A flash flood occurred in Decatur with up to three feet of flood water stranding a woman and child in their vehicle.

Storm Data and Unusual Weather Phenomena - August 2012

Location	Date/Time	Deaths & Injuries	Property & Crop Dmg	Event Type and Details
----------	-----------	-------------------	---------------------	------------------------

Huntsville, AL (HUN): 8/5/2012 1-Day Observed Precipitation
 Valid at 8/5/2012 1200 UTC- Created 8/6/12 13:33 UTC



24 hour observed precipitation from 7 am 8/4/2012 through 7 am 8/5/2012.

DEKALB COUNTY --- 2.5 N TEN BROECK [34.46, -85.98], 4.6 NW FYFFE [34.50, -85.98], 3.3 NW FYFFE [34.49, -85.96], 2.5 W FYFFE [34.46, -85.96]			
	08/09/12 12:50 CST	0	Flash Flood (due to Heavy Rain)
	08/09/12 14:00 CST	0	Source: Emergency Manager

Several inches of water was over the road along County Road 43 between Green's Chapel and Matthew's Bridge between Fyffe and Grove Oak, Alabama.

DEKALB COUNTY --- 2.5 N TEN BROECK [34.46, -85.98]			
	08/09/12 13:00 CST	25K	Lightning
	08/09/12 13:00 CST	0	Source: Emergency Manager

Lightning caused a house fire between Fyffe and Powell, Alabama.

DEKALB COUNTY --- 6.3 ESE FT PAYNE JENNINGS AR [34.34, -85.57]			
	08/09/12 15:30 CST	10K	Thunderstorm Wind (EG 43 kt)
	08/09/12 15:31 CST	0	Source: Emergency Manager

Multiple trees were blown down by thunderstorm winds.

An area of thunderstorms formed in northeast Alabama and produced isolated wind damage, flash flooding and several lightning strikes.

MADISON COUNTY --- 2.3 N MAPLE HILL [34.96, -86.77]			
	08/10/12 14:44 CST	10K	Thunderstorm Wind (EG 43 kt)
	08/10/12 14:45 CST	0	Source: Fire Department/Rescue

A few trees and power lines were downed by thunderstorm winds at Pulaski Pike and Macedonia road.

LIMESTONE COUNTY --- 1.3 S COPELAND CO [34.83, -86.83]			
	08/10/12 15:07 CST	20K	Lightning
	08/10/12 15:07 CST	0	Source: Emergency Manager

Storm Data and Unusual Weather Phenomena - August 2012

Location	Date/Time	Deaths & Injuries	Property & Crop Dmg	Event Type and Details
----------	-----------	----------------------	------------------------	------------------------

Lightning caused two structural fires, one on the 19000 block of East Limestone road and also on Meadows road.

MADISON COUNTY --- 2.7 NW MADISON [34.73, -86.80], 2.4 SSW NEBO [34.74, -86.78], 1.9 NNW MADISON [34.73, -86.78], 2.5 NW MADISON [34.73, -86.80]

08/10/12 16:45 CST	0	Flash Flood (due to Heavy Rain)
08/10/12 18:15 CST	0	Source: Emergency Manager

Very heavy rain produced flash flooding around the intersection of County Line Road and Brownsferry/Gillespie Road. A car was partially under water just east of this location (Gillespie Road) and a COOP weather station just west of this intersection reported 3.59 inches of rainfall in about 1 hour.

MADISON COUNTY --- MADISON [34.70, -86.77]

08/10/12 16:47 CST	10K	Thunderstorm Wind (EG 43 kt)
08/10/12 16:48 CST	0	Source: Law Enforcement

A large tree and a few power lines were downed by thunderstorm winds along Sullivan street in downtown Madison.

MADISON COUNTY --- MADISON [34.70, -86.77]

08/10/12 16:48 CST	10K	Thunderstorm Wind (EG 43 kt)
08/10/12 16:49 CST	0	Source: Law Enforcement

A large tree was downed by thunderstorm winds onto a house on Riddle street. Some siding was also stripped off of a house on Riddle street and several large branches were snapped by thunderstorm winds.

Clusters of thunderstorms, a few that exhibited brief supercell traits, produced sporadic wind damage, hail and intense rainfall rates. Rainfall of 2 to 4 inches in less than an hour were reported in parts of the city of Madison in southwest Madison and southeast Limestone Counties, resulting in brief flash flooding. This storm also knocked down and uprooted trees in central and southwest Madison. A funnel cloud was spawned from a storm in western Colbert County.

Storm Data and Unusual Weather Phenomena - August 2012

Location	Date/Time	Deaths & Injuries	Property & Crop Dmg	Event Type and Details
----------	-----------	-------------------	---------------------	------------------------



Near intersection of County Line Road and Brownsferry/Gillespie Road (Madison/Limestone county line)

LAUDERDALE COUNTY --- 2.0 NW FLORENCE [34.82, -87.69]

08/13/12 11:05 CST	5K	Thunderstorm Wind (EG 52 kt)
08/13/12 11:06 CST	0	Source: Emergency Manager

A few trees were downed by thunderstorm winds near County Road 28.

LAUDERDALE COUNTY --- 3.0 ESE KILLEN [34.85, -87.48]

08/13/12 11:07 CST	5K	Thunderstorm Wind (EG 52 kt)
08/13/12 11:08 CST	0	Source: Emergency Manager

A few trees were downed by thunderstorm winds on County Road 31.

LAUDERDALE COUNTY --- 4.0 ESE KILLEN [34.85, -87.46]

08/13/12 11:07 CST	0	Thunderstorm Wind (EG 52 kt)
08/13/12 11:08 CST	0	Source: Emergency Manager

A few trees were downed by thunderstorm winds at the intersection of County Roads 71 and 31.

LIMESTONE COUNTY --- 5.0 E ATHENS [34.80, -86.89]

08/13/12 12:06 CST	0	Hail (0.88 in)
08/13/12 12:07 CST	0	Source: Trained Spotter

Storm Data and Unusual Weather Phenomena - August 2012

Location	Date/Time	Deaths & Injuries	Property & Crop Dmg	Event Type and Details
Nickel size hail was reported.				

MADISON COUNTY --- MADISON [34.70, -86.77]				
	08/13/12 17:15 CST		10K	Thunderstorm Wind (EG 52 kt)
	08/13/12 17:16 CST		0	Source: Trained Spotter

A few trees and power lines were downed by thunderstorm winds.

A quasi-linear convective system (QLCS) tracked eastward through middle Tennessee and northern Alabama during the late morning and early afternoon hours. Wind damage was reported in eastern Lauderdale, Colbert and Madison counties. Elsewhere, the storms produced brief heavy rainfall, gusty winds and frequent lightning strikes.

(AL-Z002) COLBERT				
	08/16/12 04:52 CST		0	Dense Fog
	08/16/12 04:52 CST		0	

The combination of light winds and plenty of low level moisture resulted in widespread dense fog across north Alabama early on the morning of August 16th. The dense fog resulted in an accident in which a bicyclist was injured after being struck by a sports utility vehicle.

ALABAMA, Southeast

(AL-Z065) COFFEE, (AL-Z066) DALE, (AL-Z069) HOUSTON				
	08/01/12 00:00 EST		0	Drought
	08/14/12 23:59 EST		0	

Drought conditions improved to less than D2 status across portions of Coffee, Dale, and Houston counties.

(AL-Z067) HENRY				
	08/01/12 00:00 EST		0	Drought
	08/31/12 23:59 EST		0	

Drought conditions improved during August from D4 back to D2 status across Henry county.

COFFEE COUNTY --- 3.6 ENE CAMP ALAFLO BSA [31.42, -85.79], 1.6 SE COPPINVILLE [31.28, -85.79], 0.7 WSW ENTERPRISE MUNICIPAL ARPT [31.28, -85.90], 1.7 NNW CLINTONVILLE [31.42, -85.90]				
	08/07/12 05:28 CST		20K	Flash Flood (due to Heavy Rain)
	08/07/12 09:00 CST		0	Source: Emergency Manager

Significant flash flooding occurred around Enterprise extending eastward to the Coffee/Dale county border on Highway 27. Water was rushing across Highway 27 along the county border, and radar estimated that over 7 inches of rain had fallen in just a few hours in this area. In Enterprise, some rescue operations were conducted for people trapped in houses and vehicles. Houses were surrounded by water in Gateway Estates. Some road closures included Dixie Dr between Cherokee and Lester, as well as Highway 27 near Lakeview Dr in the vicinity of the Enterprise Country Club. Water also covered the roadway on W College St. Monetary damage was estimated.

DALE COUNTY --- 1.1 NE OZARK [31.45, -85.63]				
	08/07/12 05:28 CST		30K	Heavy Rain
	08/07/12 07:00 CST		0	Source: Emergency Manager

The Dale county library's roof collapsed on August 9th due to heavy rain of around 9 inches from the previous couple of days. The heaviest rain fell during the early morning hours of August 7th. Monetary damage was estimated.

DALE COUNTY --- 5.6 NNW LOWE ARMY HELIPORT [31.42, -85.79], 4.7 NNW LOWE ARMY HELIPORT [31.41, -85.79], 3.0 W HOOPER STAGE FIELD [31.41, -85.74], 4.0 SW MARLEY MILL [31.45, -85.74]				
	08/07/12 05:28 CST		0	Flash Flood (due to Heavy Rain)
	08/07/12 07:00 CST		0	Source: Public

Water was rushing across Highway 27 near the Coffee/Dale county border. Radar estimated 7 inches of rain had already fallen in this area in just a few hours with additional rainfall occurring.

Storm Data and Unusual Weather Phenomena - August 2012

Location	Date/Time	Deaths & Injuries	Property & Crop Dmg	Event Type and Details
GENEVA COUNTY --- 1.1 S THURSTON [30.99, -85.78], 5.3 W VAUGHANVILLE [30.99, -86.00], 2.2 SSW COFFEE SPRINGS [31.13, -85.92], 1.8 NW HIGHFALLS [31.11, -85.81]				
	08/07/12 06:25 CST		0	Flash Flood (due to Heavy Rain)
	08/07/12 08:30 CST		0	Source: Emergency Manager

Flash flooding occurred in Geneva as well as surrounding areas. Water was reported rushing across several roads in Geneva as well as County Road 41 northeast of town. County Road 53 was also closed at the Alabama/Florida border.

A weak tropical wave stalled over portions of southeast Alabama, and convection flared up during the early morning hours of August 7th. Very heavy rainfall amounts led to flash flooding across the area.

COFFEE COUNTY --- NEW BROCKTON [31.37, -85.92]				
	08/14/12 15:05 CST		2K	Thunderstorm Wind (EG 50 kt)
	08/14/12 15:05 CST		0	Source: Emergency Manager

Three trees were blown down around New Brockton. Monetary damage was estimated.

DALE COUNTY --- 5.0 W OZARK [31.44, -85.72], OZARK [31.44, -85.64]				
	08/14/12 15:15 CST		3K	Thunderstorm Wind (EG 50 kt)
	08/14/12 15:35 CST		0	Source: Emergency Manager

Multiple trees were blown down across the western portion of Dale county. Monetary damage was estimated.

A few summertime severe storms developing during the afternoon hours in southeast Alabama with moderate levels of instability and a weak upper level shortwave.

GENEVA COUNTY --- 2.1 N LOWERY [31.19, -86.14], 2.5 N LOWERY [31.20, -86.14]				
	08/30/12 01:44 CST		20K	Tornado (EF1, L: 0.41 mi , W: 35 yd)
	08/30/12 01:45 CST		0	Source: Emergency Manager

The Geneva county emergency manager confirmed that an EF1 tornado touched down around the Highway 52 and County Road 20 area. Several large trees were blown down, and the roof was blown off a mobile home along with damage to sheds and a barn near County Road 5 and Bear Branch Road. This tornado continued into far southwest Coffee county before lifting. Monetary damage was estimated.

COFFEE COUNTY --- 2.0 ESE KINSTON [31.20, -86.14], 2.2 SSE RHOADES [31.23, -86.14]				
	08/30/12 01:45 CST		5K	Tornado (EF0, L: 2.56 mi , W: 35 yd)
	08/30/12 01:48 CST		0	Source: Emergency Manager

The Coffee county emergency manager reported minor damage to structures in far southwest Coffee county. This was the result of a weak tornado moving out of northwest Geneva county. The Coffee county portion of this tornado was rated EF0. Monetary damage was estimated.

The outer remnants of Hurricane Isaac spawned an EF1 tornado in Geneva county.

ALABAMA, Southwest

(AL-Z053) CLARKE				
	08/03/12 14:00 CST	1	0	Heat
	08/03/12 14:00 CST		0	

Direct Fatalities: M38OU

As is typical along the Central Gulf Coast Region for early August, on this day late morning and afternoon temperatures were in the middle 90s with heat index readings climbing to around 105.

CLARKE COUNTY --- JACKSON [31.52, -87.88]				
	08/04/12 17:58 CST		5K	Lightning
	08/04/12 17:58 CST		0	Source: Emergency Manager

Lightning struck the Jackson hospital causing the evacuation of 9 patients due to smoke in air conditioning system.

Storm Data and Unusual Weather Phenomena - August 2012

Location	Date/Time	Deaths & Injuries	Property & Crop Dmg	Event Type and Details
----------	-----------	-------------------	---------------------	------------------------

A strike hit a hospital causing an evacuation due to smoke.

(AL-Z063) LOWER MOBILE, (AL-Z064) LOWER BALDWIN

	08/28/12 06:00 CST		0	Tropical Storm
	08/29/12 18:00 CST		0	

MOBILE COUNTY --- 1.0 NW DAWES [30.61, -88.26]

	08/29/12 21:00 CST		0	Heavy Rain
	08/30/12 15:00 CST		0	Source: NWS Employee

Storm total rainfall of 14.53 inches of rain received for Isaac through 4 pm Aug 30th.

CHOCTAW COUNTY --- 1.0 E TOXEY [31.90, -88.28]

	08/30/12 09:58 CST		5K	Tornado (EF0, L: 0.01 mi , W: 50 yd)
	08/30/12 10:00 CST		0	Source: NWS Employee

A weak tornado briefly touched downing a few trees near Toxey.

Hurricane Isaac moved into central Louisiana. This track brought storm surge...flooding...and isolated tornadoes to the central gulf coast.