



# Incoming Winter Storm

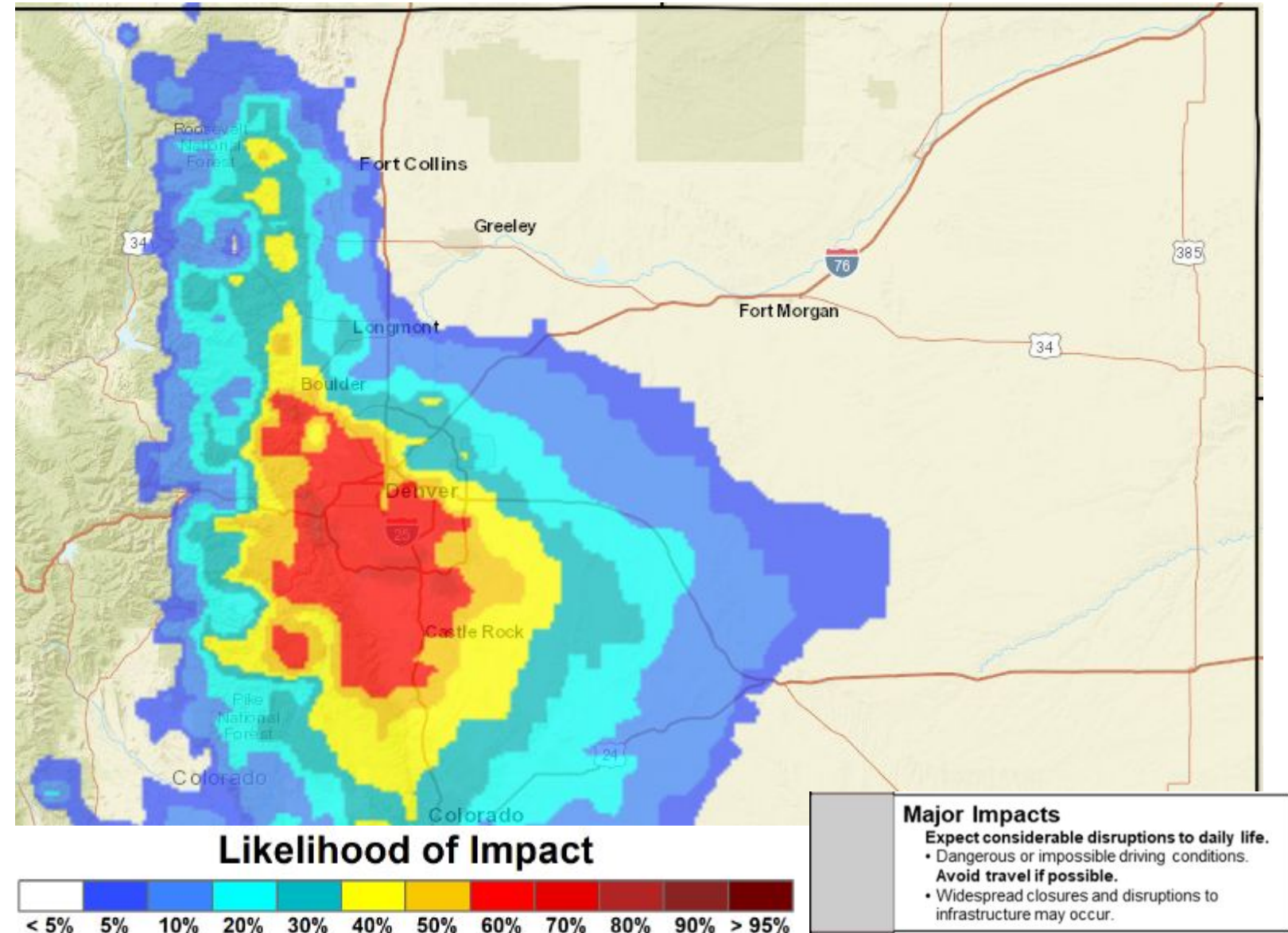
March 12, 2024  
4:01 PM

Wednesday - Thursday Night

## Key Messages

- Heavy snow (1-3 feet) for most of Front Range Mountains, Foothills, and Palmer Divide. A few locations may see up to 4 feet of snow.
- For the Denver Metro, rain changing to heavy snow Wednesday evening with 8 to 16 inches of snow.
- Snowfall amounts to greatly increase towards the foothills and be lower north of I-76 over the northeast plains.
- Impacts for the Front Range Foothills, Palmer Divide, and Denver metro area Wednesday night through Thursday night include:
  - Very difficult to impossible travel due to heavy snowfall on roads.
  - Broken branches & downed power lines possibly leading to power outages.

## Probability of Major Impacts: Wed Night - Thur night





# Current Winter Weather Highlights

March 12, 2024  
4:01 PM

## Upcoming Storm

### Winter Storm Warning

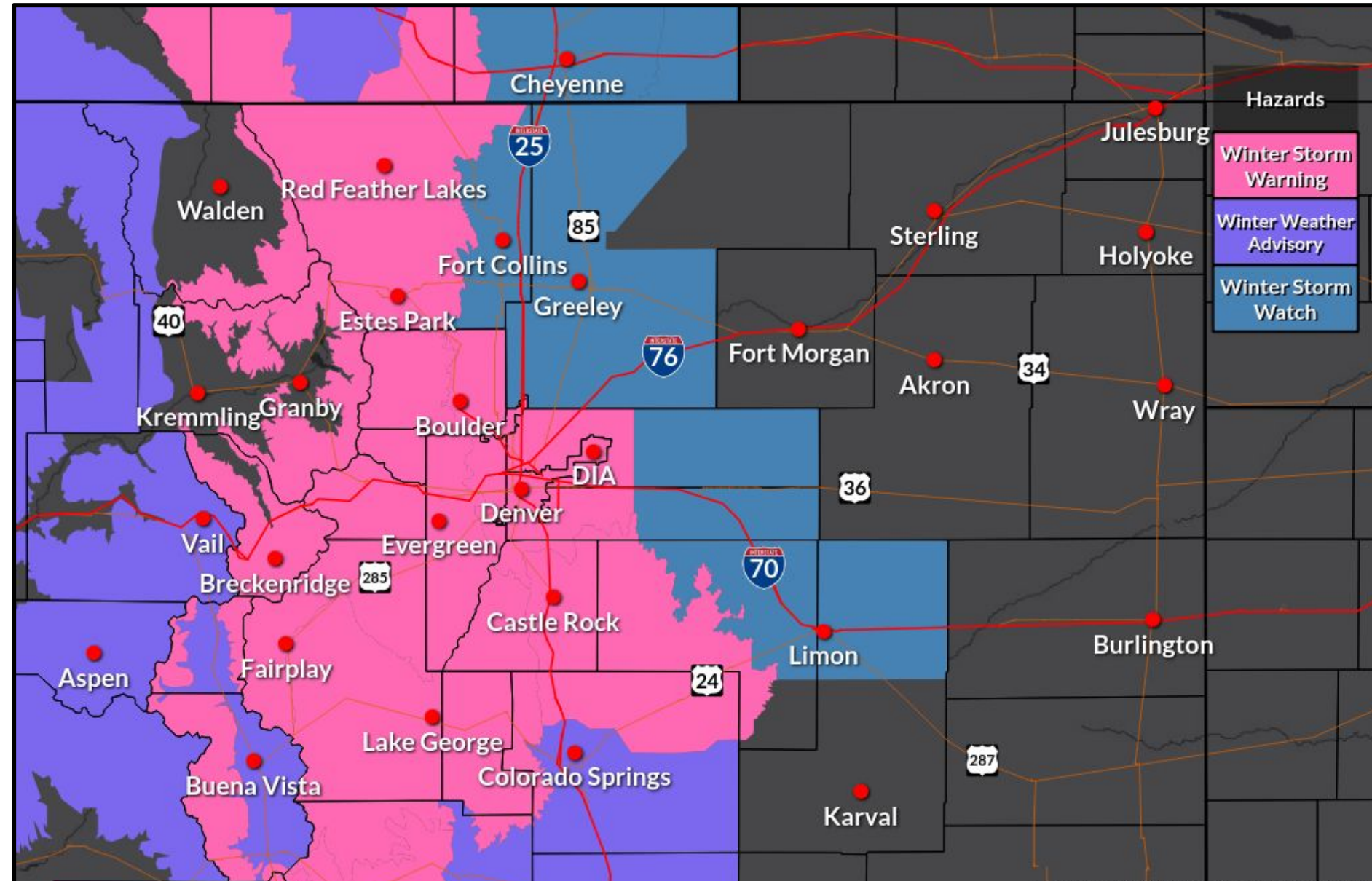
- Front Range Mountains/Foothills/South Park
  - ◆ In effect 12pm Weds - 6am Friday
- Denver Metro/Palmer Divide
  - ◆ In effect 9pm Weds - 6am Friday

### Winter Weather Advisory

- Park Range
  - ◆ In effect tonight through Thursday evening

### Winter Storm Watch

- Fort Collins/Greeley/Adjacent Plains
  - ◆ In effect 9pm Weds - 6am Friday







# Forecast Confidence

March 12, 2024  
4:01 PM

## Timing

Low	Medium	High
-----	--------	------

Heaviest snowfall starts Wednesday afternoon mountains & foothills. Rain changes to snow Denver area & adjacent plains Wednesday evening. Diminishes late Thursday night.

## Snowfall Amounts

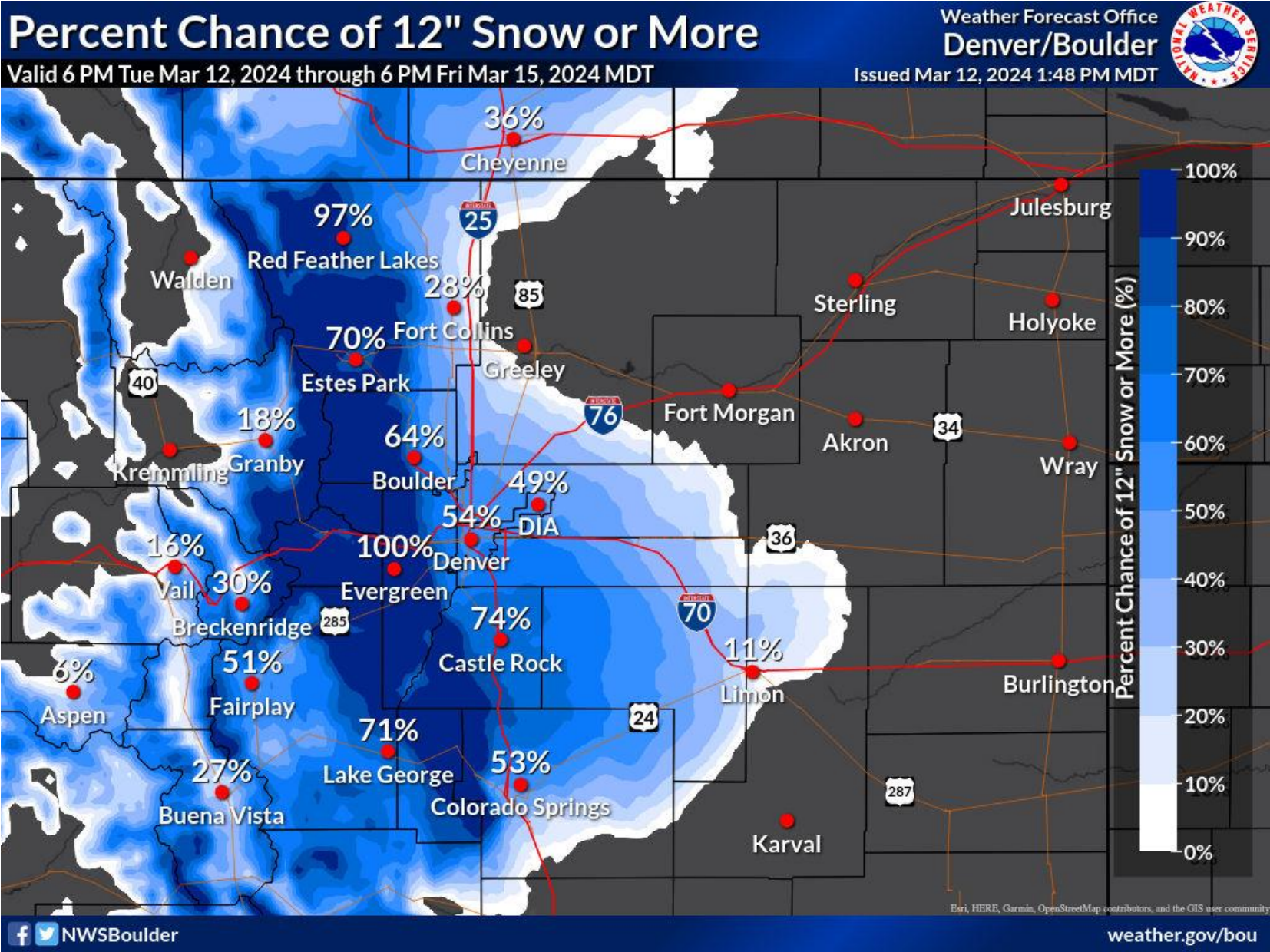
Low	Medium	High
-----	--------	------

Still uncertainty as to details of storm, but ingredients coming together for heavy Front Range snowfall.

## Impacts

Low	Medium	High
-----	--------	------

Difficult travel I-70 Limon-Denver-Eisenhower Tunnel, I-25 south of Ft Collins - Colorado Springs



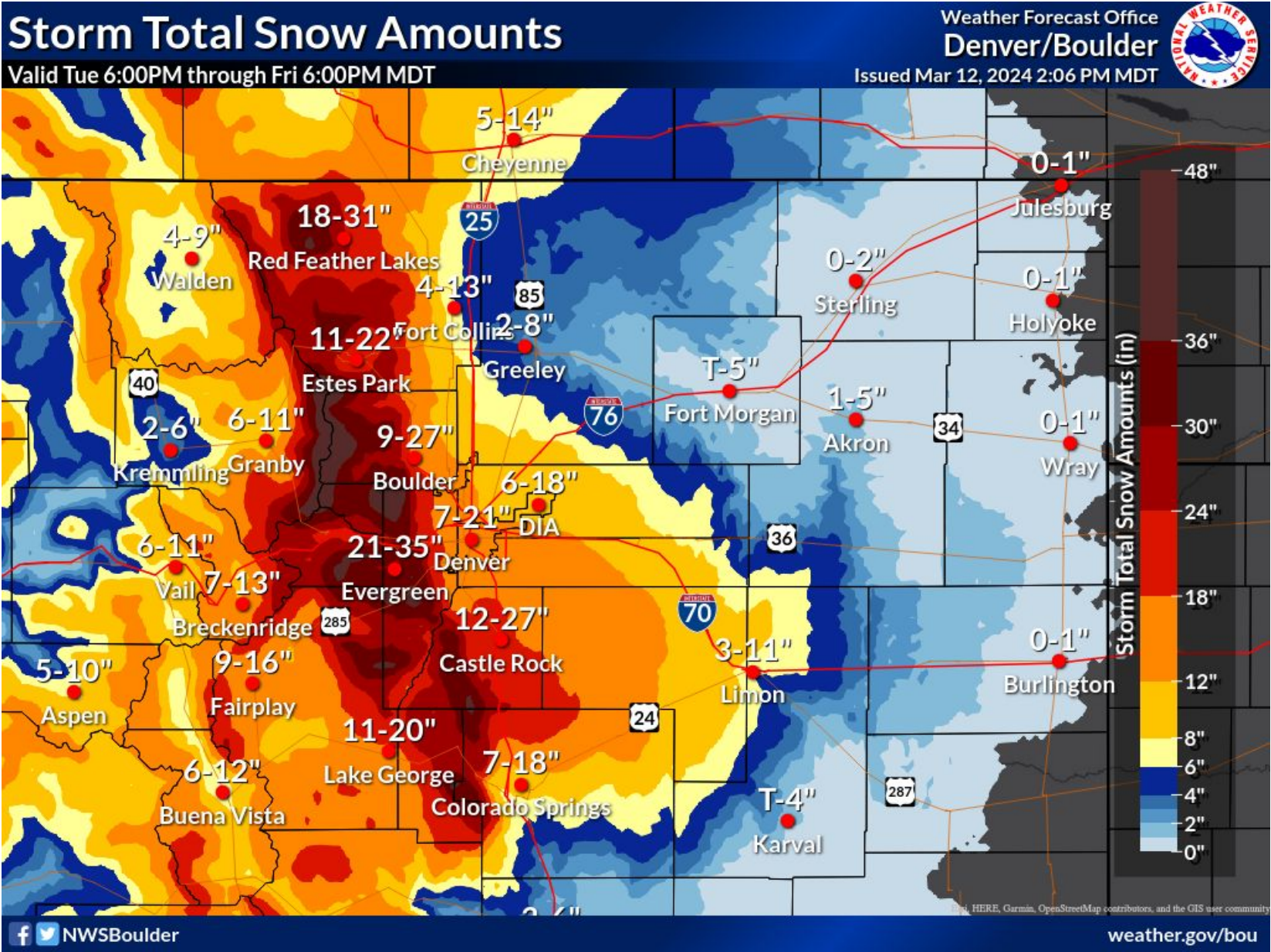
Probability of 12" of Snow or More





# Expected Storm Total Snow

March 12, 2024  
4:01 PM



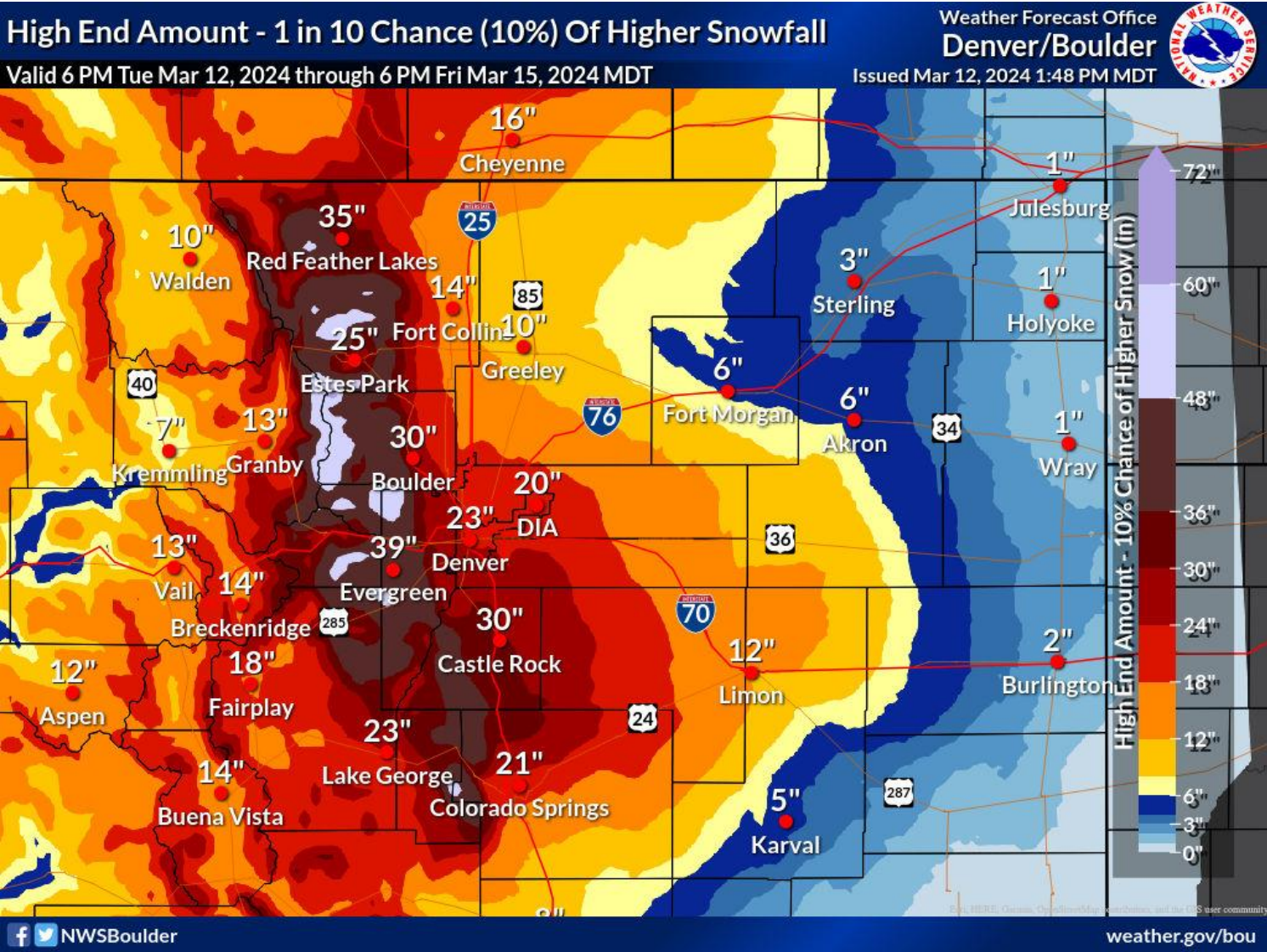
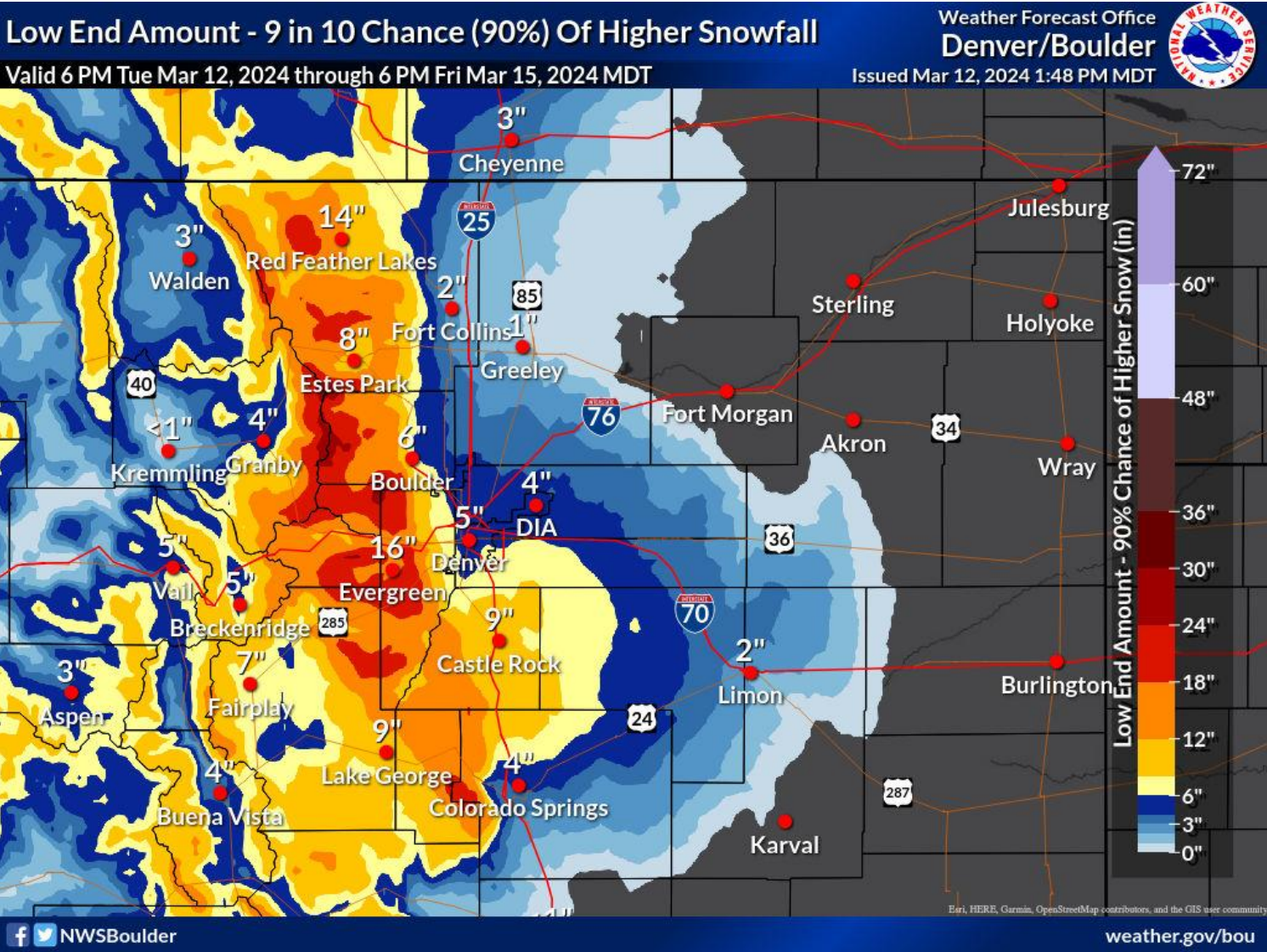




# Still Uncertainty on Amounts

March 12, 2024  
4:01 PM

## High End and Low End Scenarios



**What's Changed?** Greater confidence of heavier snow over the Palmer Divide and portions of the Denver metro area. Lower potential around Fort Collins and Greeley. Worst case scenario has 2 ft + totals in foothills & Palmer Divide!





# High Impact Winter Storm

March 12, 2024  
4:01 PM

## Timing of Snow Rates

	Wed, Mar 13 - 12 to 6 PM	Wed, Mar 13 - 6 PM to 12 AM	Thu, Mar 14 - 12 to 6 AM	Thu, Mar 14 - 6 AM to 12 PM	Thu, Mar 14 - 12 to 6 PM	Thu, Mar 14 - 6 PM to 12 AM	Fri, Mar 15 - 12 to 6 AM
<b>Denver Metro</b> Denver, Boulder, Aurora, Centennial							
<b>Foothills</b> Between 6,000 and 9,000ft							
<b>Palmer Divide</b> Castle Rock, Larkspur, Elizabeth							
<b>Northeast Plains</b> Fort Morgan, Akron, Sterling, Julesburg							
<b>Fort Collins</b> Ft. Collins, Loveland, Windsor							
<b>I-70 Mtn Corridor</b> Genesee, Georgetown, EJMT, Dillon							





# Storm Total LIQUID Amounts

March 12, 2024  
4:01 PM

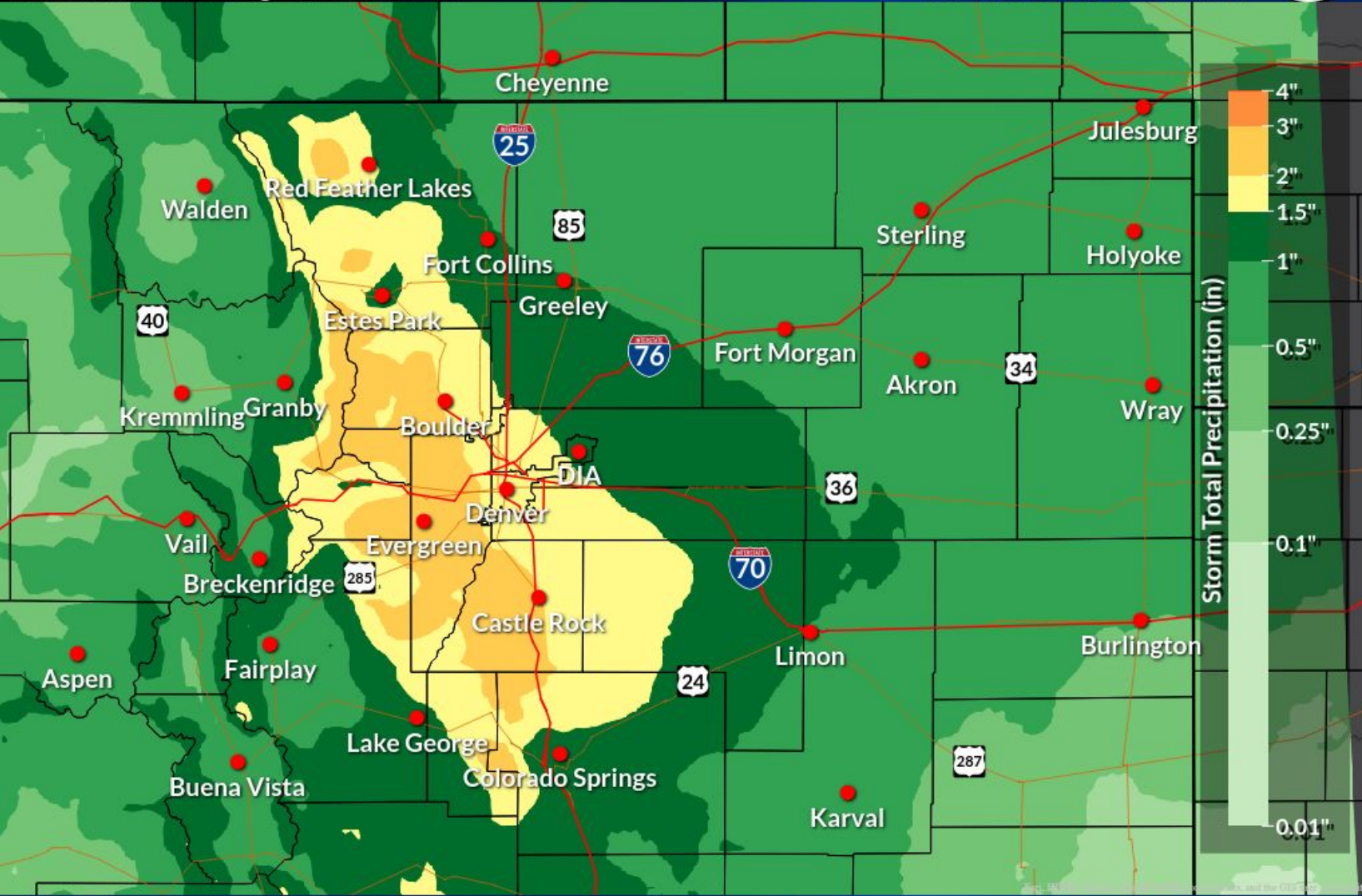
Wednesday - Friday

## Storm Total Precipitation

Valid Tue 6:00PM through Fri 6:00PM MDT

Weather Forecast Office  
Denver/Boulder

Issued Mar 12, 2024 2:06 PM MDT



f NWSBoulder

weather.gov/bou



National Oceanic and  
Atmospheric Administration  
U.S. Department of Commerce

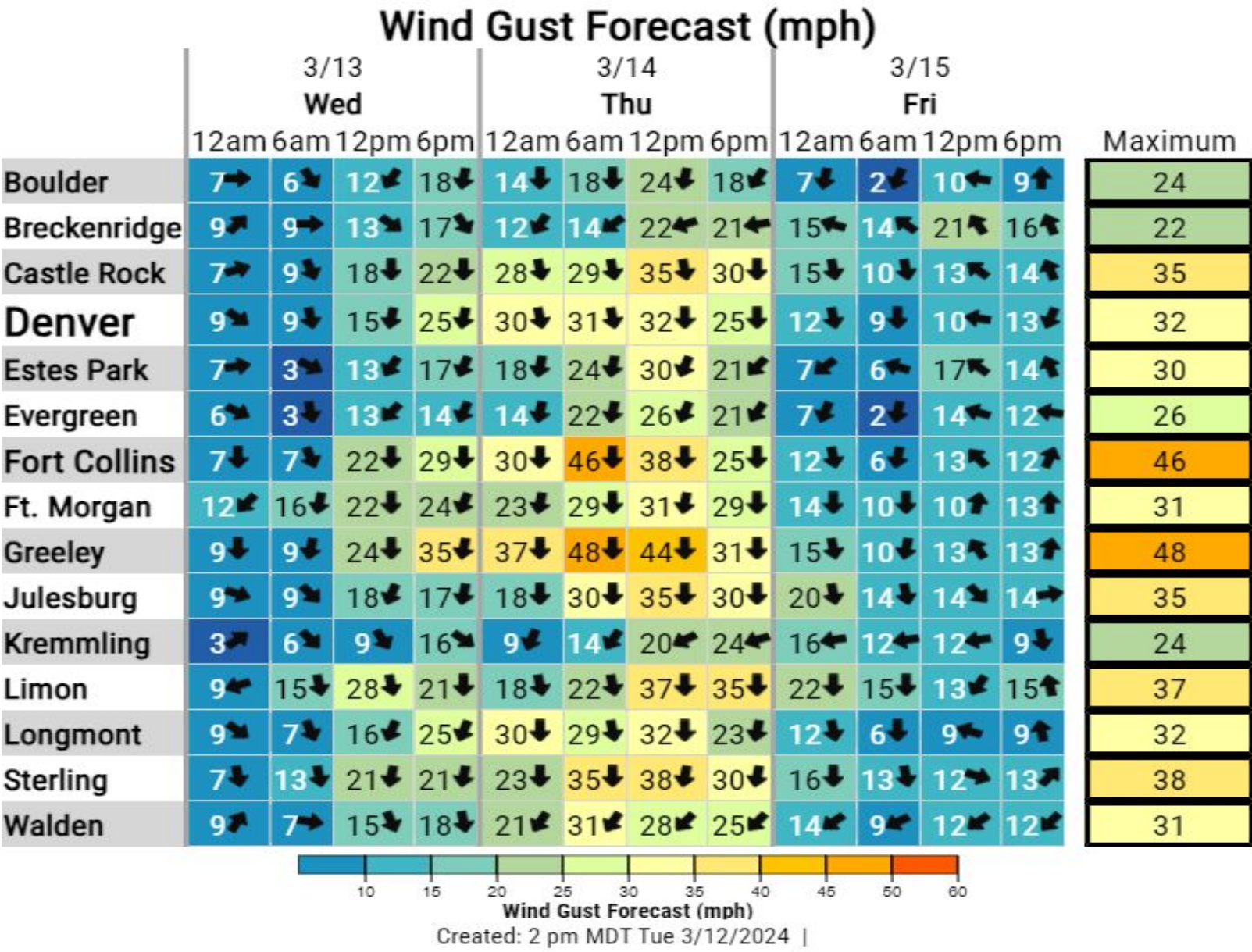
National Weather Service  
Denver/Boulder, CO





# Wind Gust Forecast

March 12, 2024  
4:01 PM







# Winter Safety Information

March 12, 2024  
4:01 PM

## WINTER DRIVING KNOW BEFORE YOU GO



### Check road conditions.

Call 511 or visit your state's DOT webpage to check on road conditions. Choose a different route or adjust your travel plans if road conditions are poor.

### Pack an emergency supply kit.

Stock your vehicle with a mobile phone, charger, batteries, blankets, flashlight, first-aid kit, high-calorie, non-perishable food, candle to melt snow for drinking water, sack of sand or cat litter for traction, shovel, scraper, and battery booster cables.

### Get the weather forecast.

Change your travel plans if hazardous weather is expected.



### Ready your vehicle.

Check your battery, wipers, coolant, and other systems affected by cold temperature. Make sure your tires have good tread. Clear snow, ice or dirt from your windows, lights and camera.







# County Information

March 12, 2024  
4:01 PM

Click on the Links Below for Each County

[Denver Metro](#)  
[Eastern Adams &](#)  
[Arapahoe Counties](#)  
[Boulder County](#)  
[Clear Creek County](#)  
[Douglas County](#)  
[Elbert County](#)  
[Gilpin County](#)  
[Grand County](#)  
[Jackson County](#)  
[Jefferson County](#)

[Larimer County](#)  
[Lincoln County](#)  
[Logan County](#)  
[Morgan County](#)  
[Park County](#)  
[Phillips County](#)  
[Sedgwick County](#)  
[Summit County](#)  
[Washington County](#)  
[Weld County](#)

