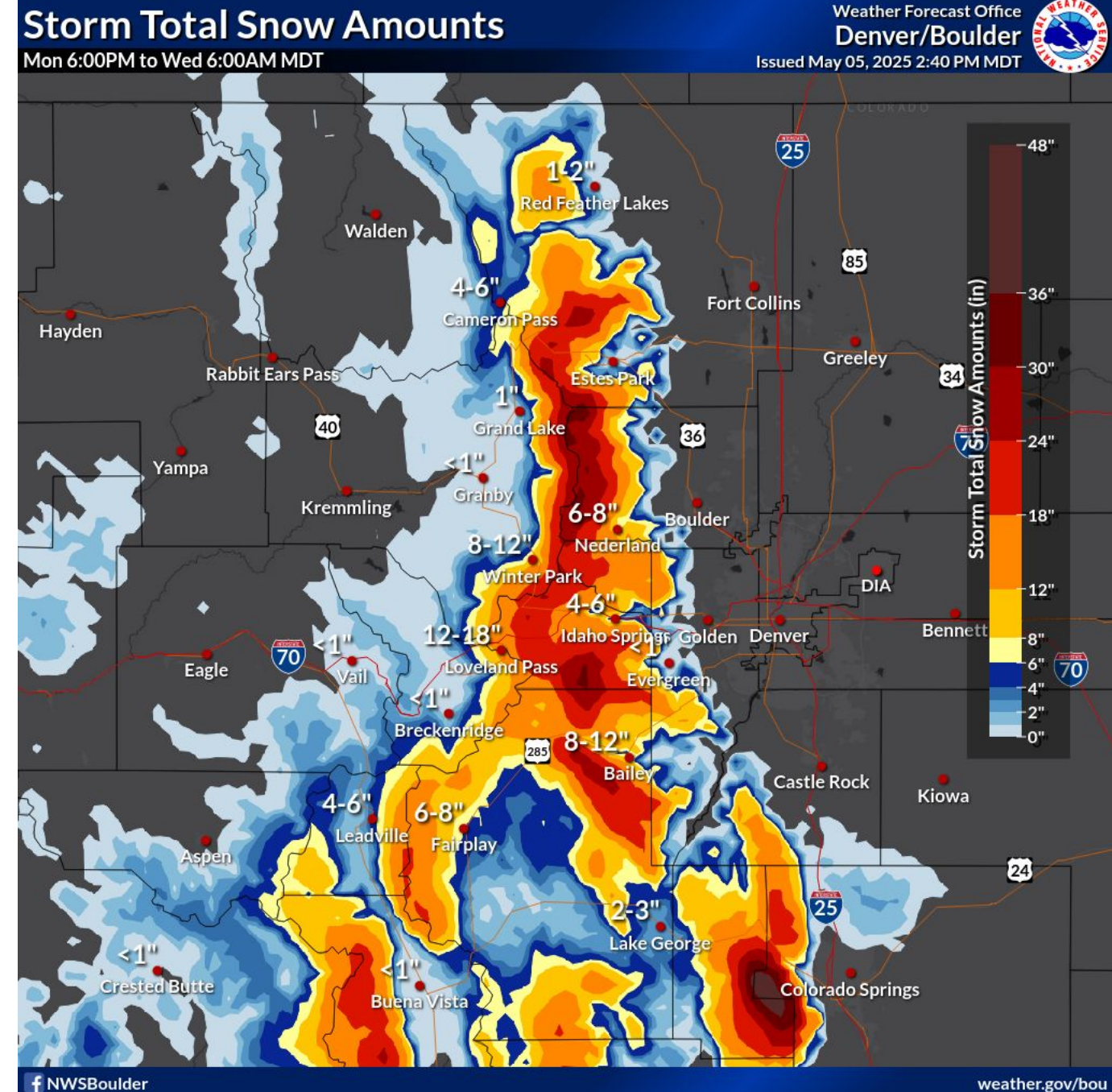




May 5, 2025
4:00 PM

Key Messages

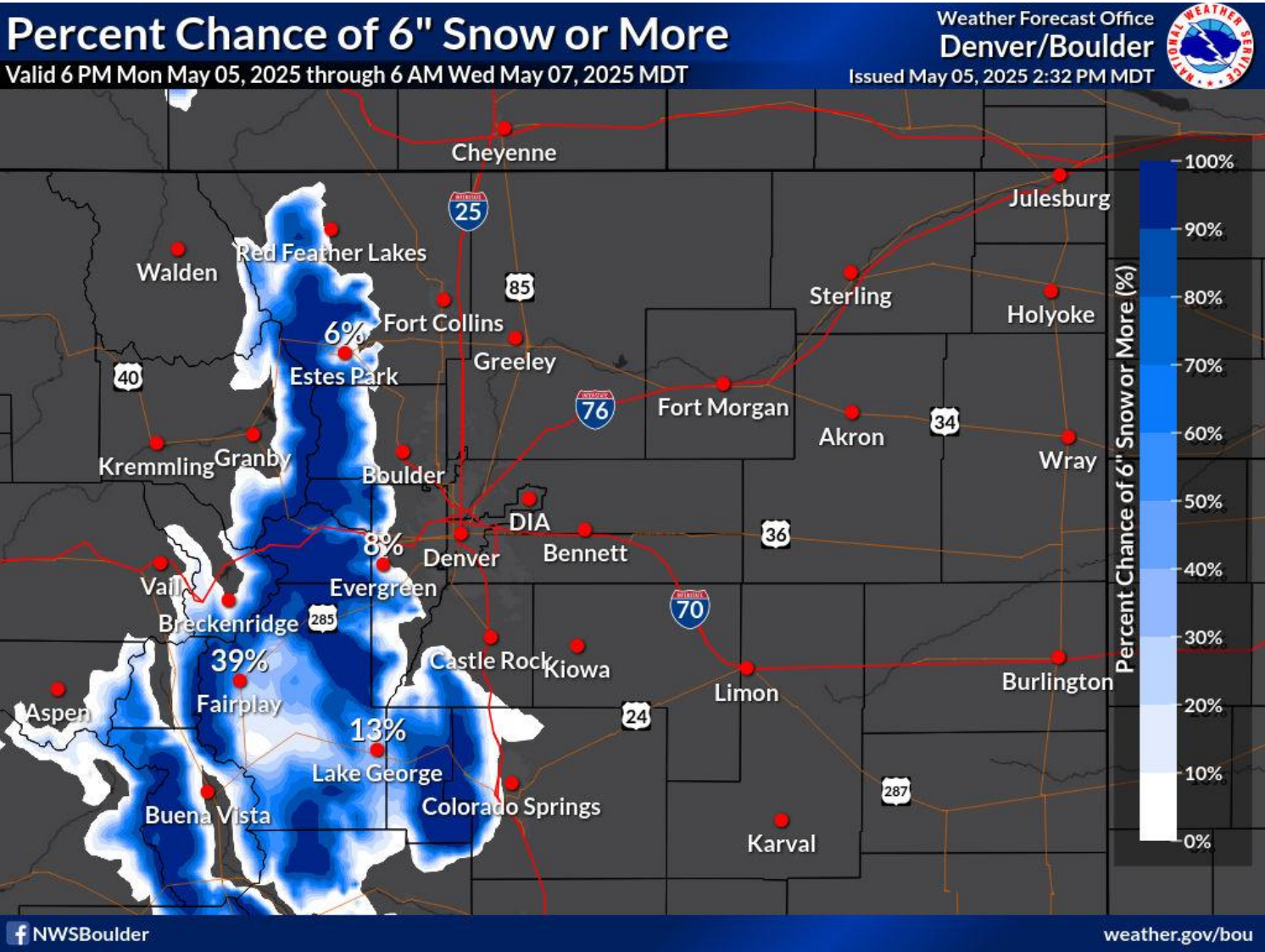
- Precipitation will increase over the Front Range mountains and around Summit County tonight as the snow level drops to around 8,000 feet
- Heaviest snow will be during the day Tuesday and Tuesday night
- There will be a sharp gradient in snow amounts between 7,000 and 8,000 feet. 12 to 22 inches of snow is expected over the higher east slopes, including I-70 in Clear Creek County and Berthoud and Kenosha passes
- Significant rainfall is expected over the lower elevations, but the threat of flooding is low



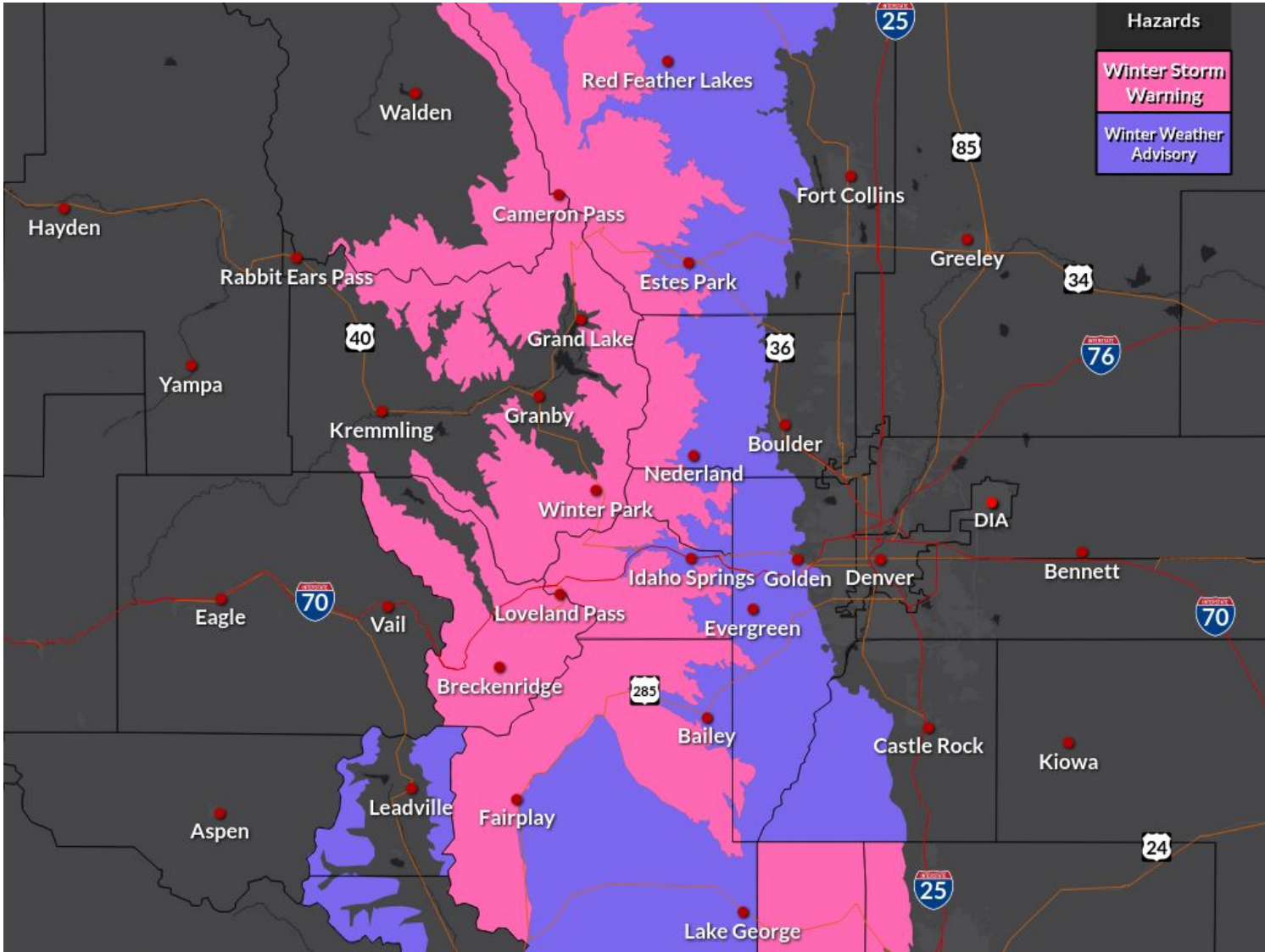


Snow Potential and Current Highlights

May 5, 2025
4:00 PM



Probability of 6" or more of Snowfall



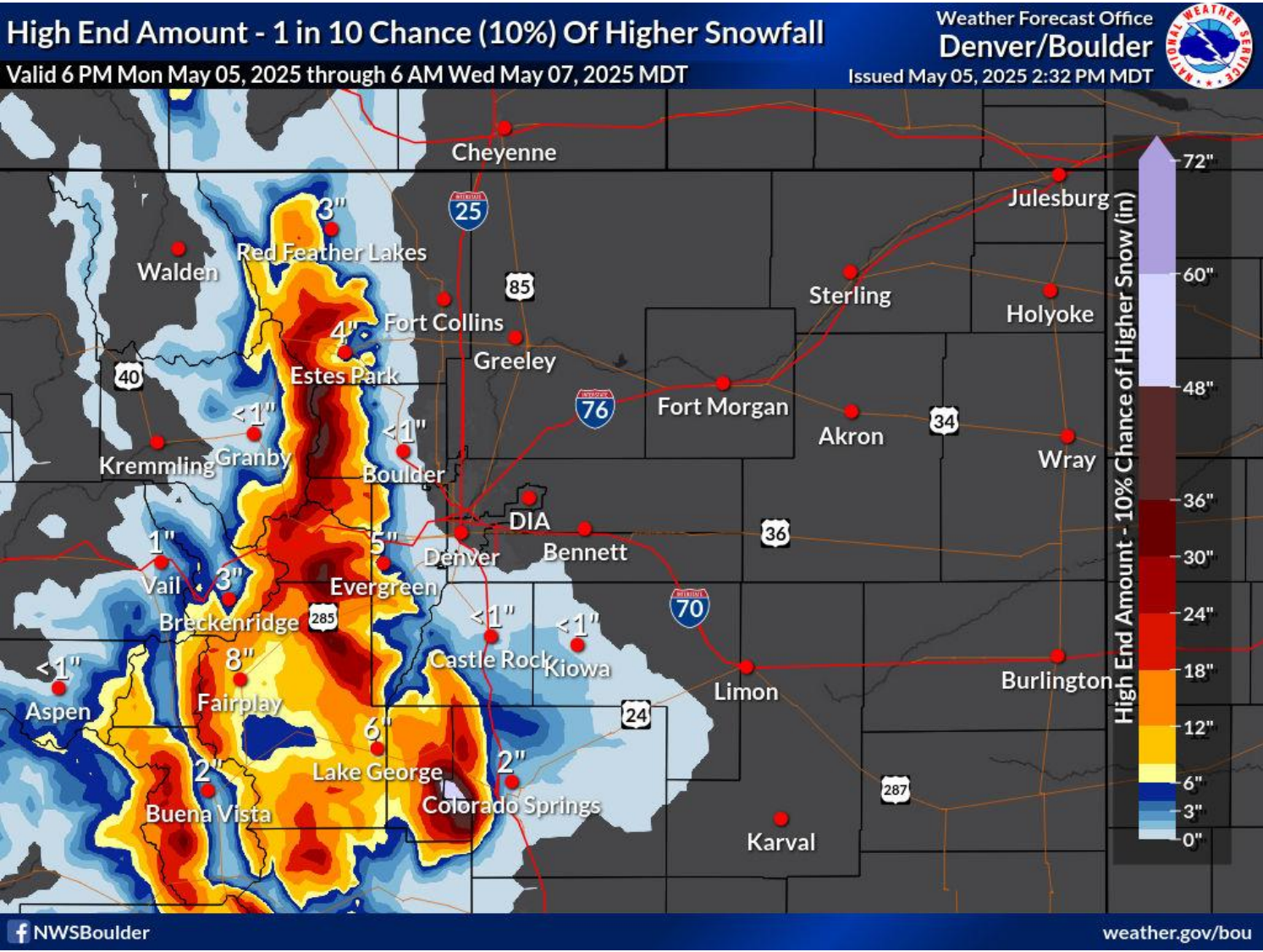
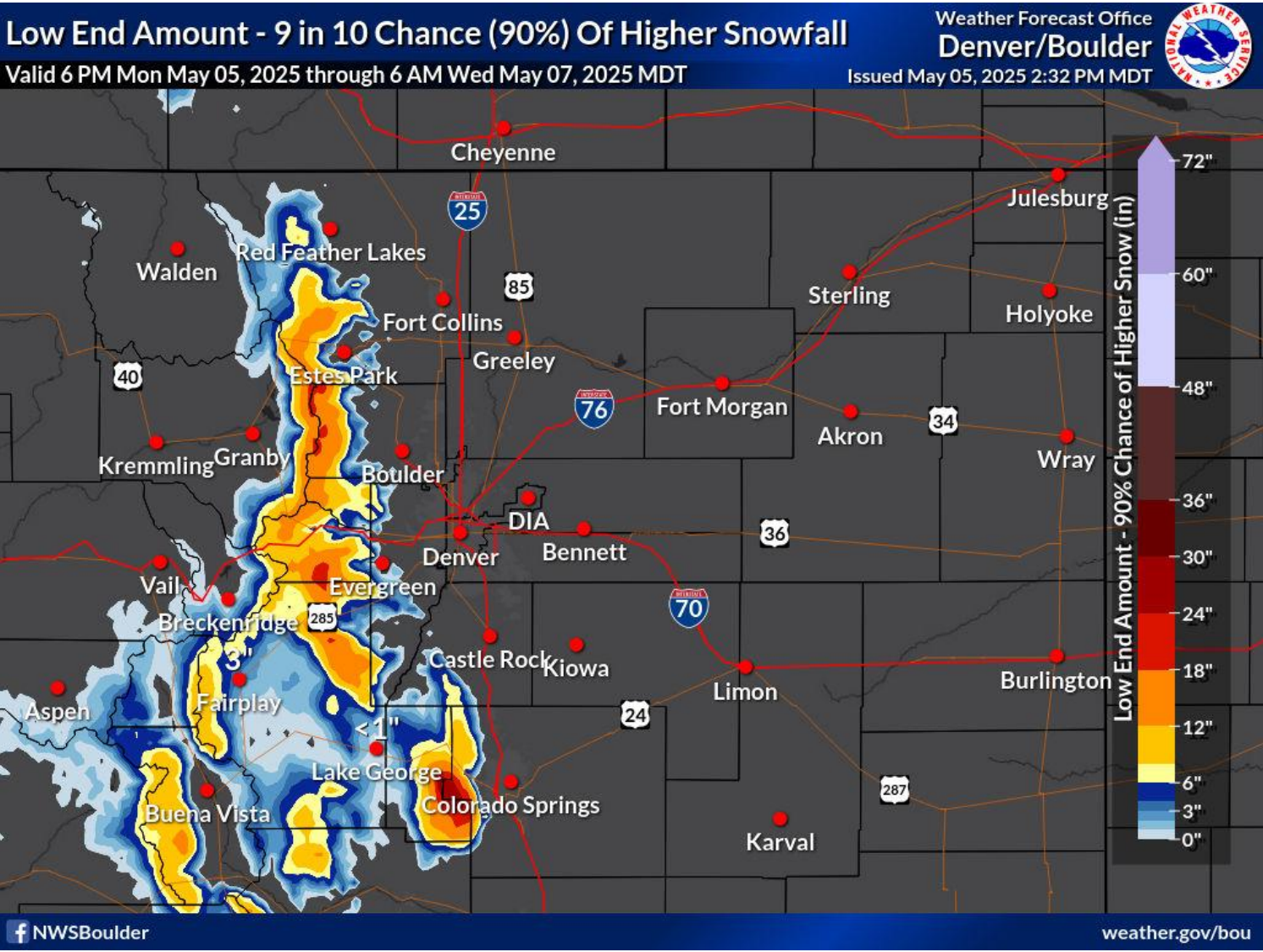
Warnings and Advisories Tuesday & Tuesday Night





High & Low End Snow Amounts

May 5, 2025
4:00 PM

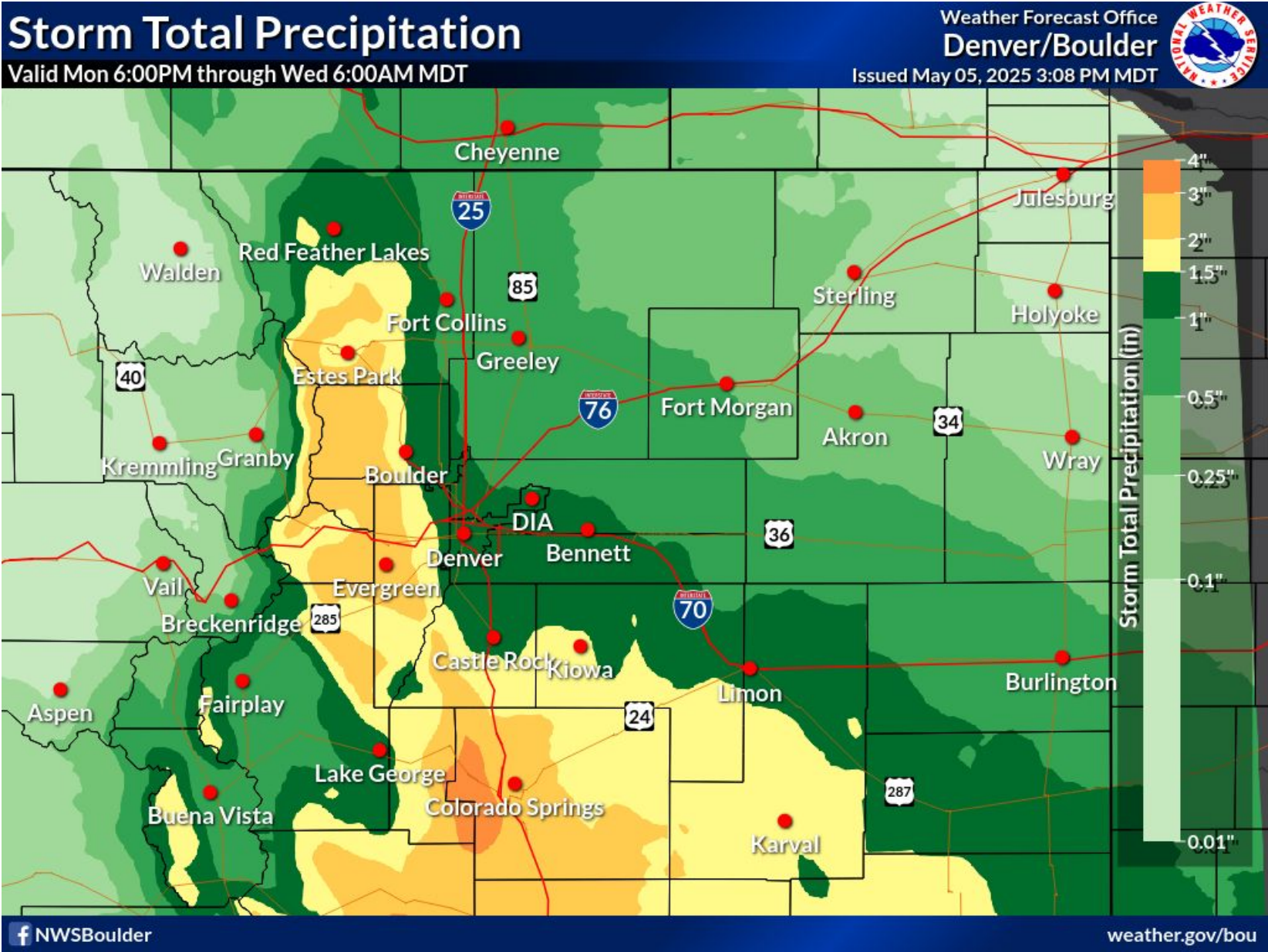




Storm Total Precipitation (Rain and Snow)

May 5, 2025
4:00 PM

Through Wednesday Morning





Summary

Strong Spring Storm

May 5, 2025
4:00 PM



Hazards:

Snow and travel impacts tonight through Wednesday morning across the higher elevations of the Front Range.



Areas Impacted:

Snow: Heaviest higher Front Range mountains. **Rain:** Most of the lower foothills and plains



Timing & Duration:

Through Wednesday. Heaviest precipitation will fall Tuesday afternoon/evening



Impacts:

The heavy, “wet” snow could weigh down trees and may break branches with power outages possible.



Certainty & Consideration:

Medium certainty for snow amounts. Significant variability in snowfall totals between 7,000-8,000 feet.





County Information

May 5, 2025
4:00 PM

Click on the Links Below for Each County

[Denver Metro](#)
[Eastern Adams &](#)
[Arapahoe Counties](#)
[Boulder County](#)
[Clear Creek County](#)
[Douglas County](#)
[Elbert County](#)
[Gilpin County](#)
[Grand County](#)
[Jackson County](#)
[Jefferson County](#)

[Larimer County](#)
[Lincoln County](#)
[Logan County](#)
[Morgan County](#)
[Park County](#)
[Phillips County](#)
[Sedgwick County](#)
[Summit County](#)
[Washington County](#)
[Weld County](#)

