

.....January 2022 Climate Summary for the Denver Area.....

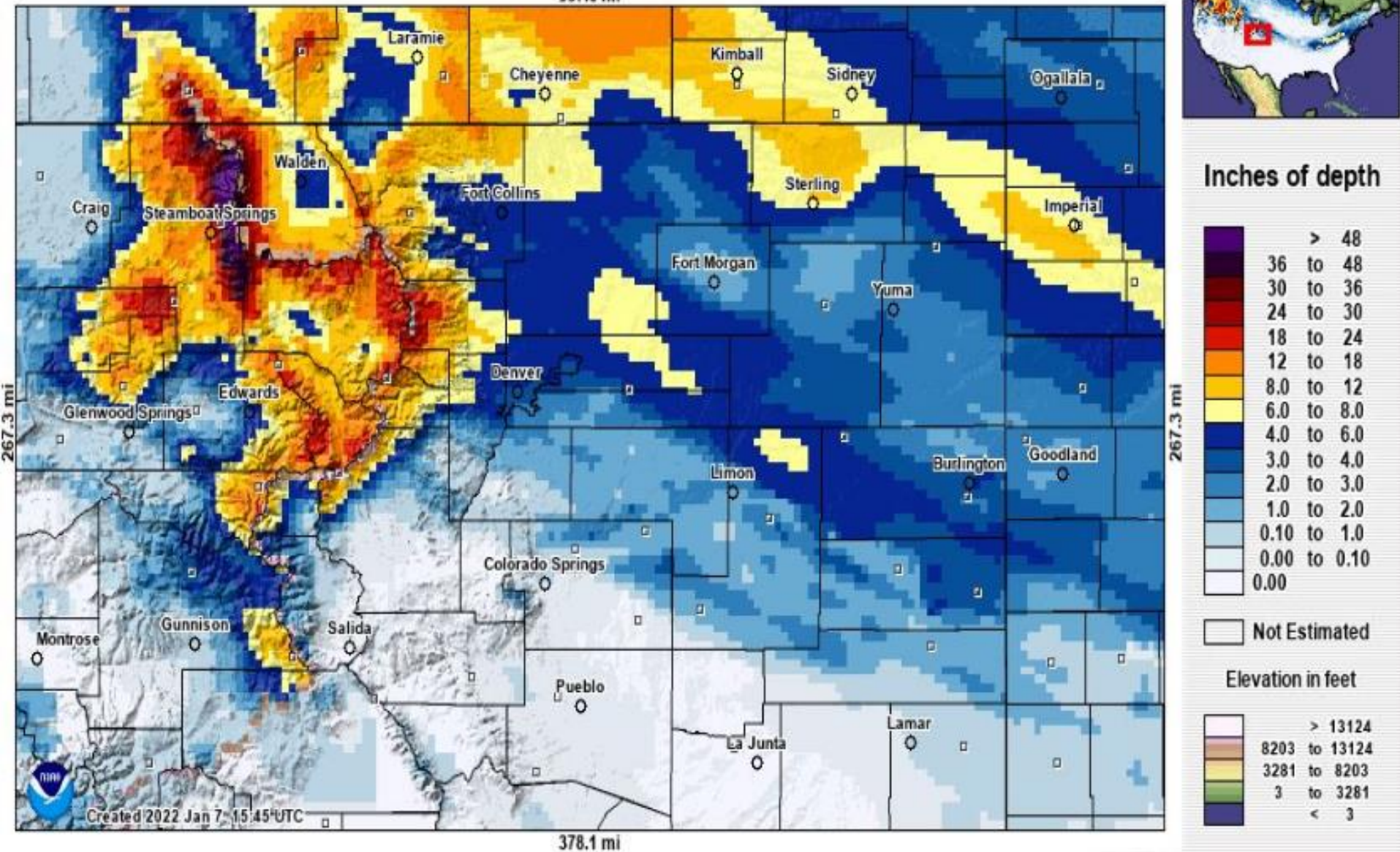


Roxborough State Park 1/14/2022

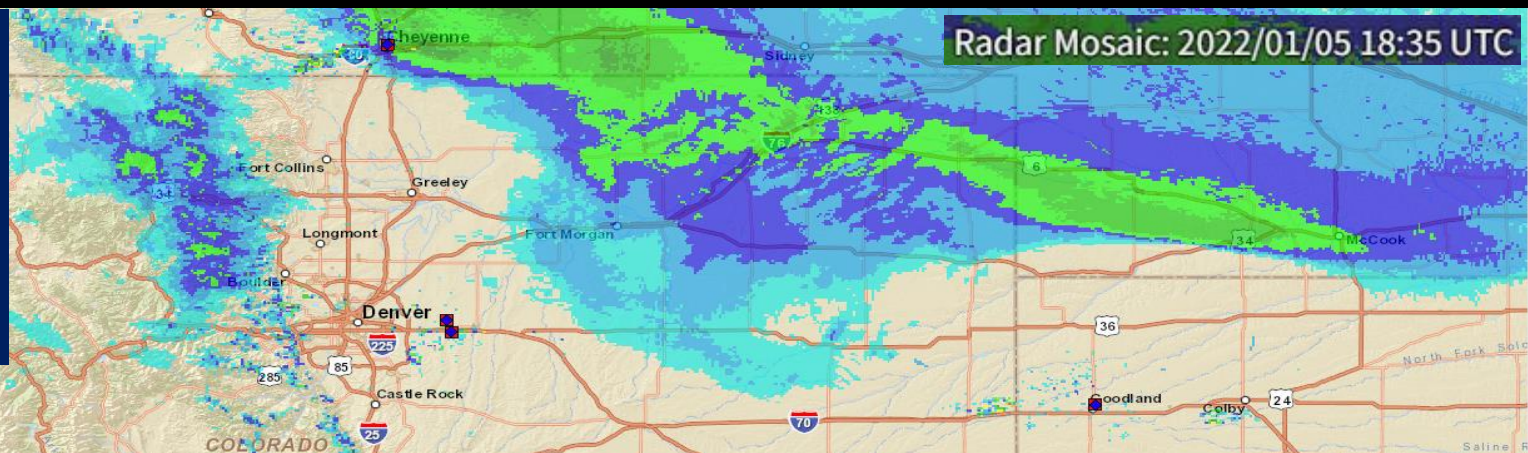
After a mild & very dry fall & early winter, a pattern change brought much colder & wetter weather to Northeastern Colorado, including the Front Range Urban Corridor & Metro Denver. During much of the month, a deep upper level trough of low pressure dominated the Central & Eastern U.S. with a moderate north to northwesterly flow aloft over Colorado. At times, this trough retrograded westward over the Rocky Mountain Region. This pattern allowed a series of upper level disturbances & associated Canadian cold fronts to move into the region; bringing periods of upslope flow across the Palmer Divide, foothills & adjacent plains. The upslope flow combined with lift from upper level jet streaks resulted in a few accumulating snowfall events across the area. As a result, January 2022 was the first month since May of 2021 with above normal precipitation and below normal temperatures.

Lift from a strong upper level jet over the area combined with a plume of Pacific moisture and strong orographic lift produced heavy snow in the mountains. The plains also saw accumulating snow, heaviest over the far northern sections as bands of snow moved across the area

Estimated Total Snow Accumulations January 4th-6th



During the late morning of January 5th, A snow band with moderate to heavy snow set up over the Northeastern Plains, north and east of the northern Front Range urban Corridor



By early evening, the band of heavy snow sagged southward into the Metro Denver Area.



By midnight the snow band had started to weaken as it shifted south into the Palmer Divide



A quick moving shortwave and associated cold front produced strong winds across much of Northeastern Colorado on the afternoon of the 14th



12HR Peak Winds (mph)

01/14/2022

Dakota Hill
Gilpin 10938ft

64

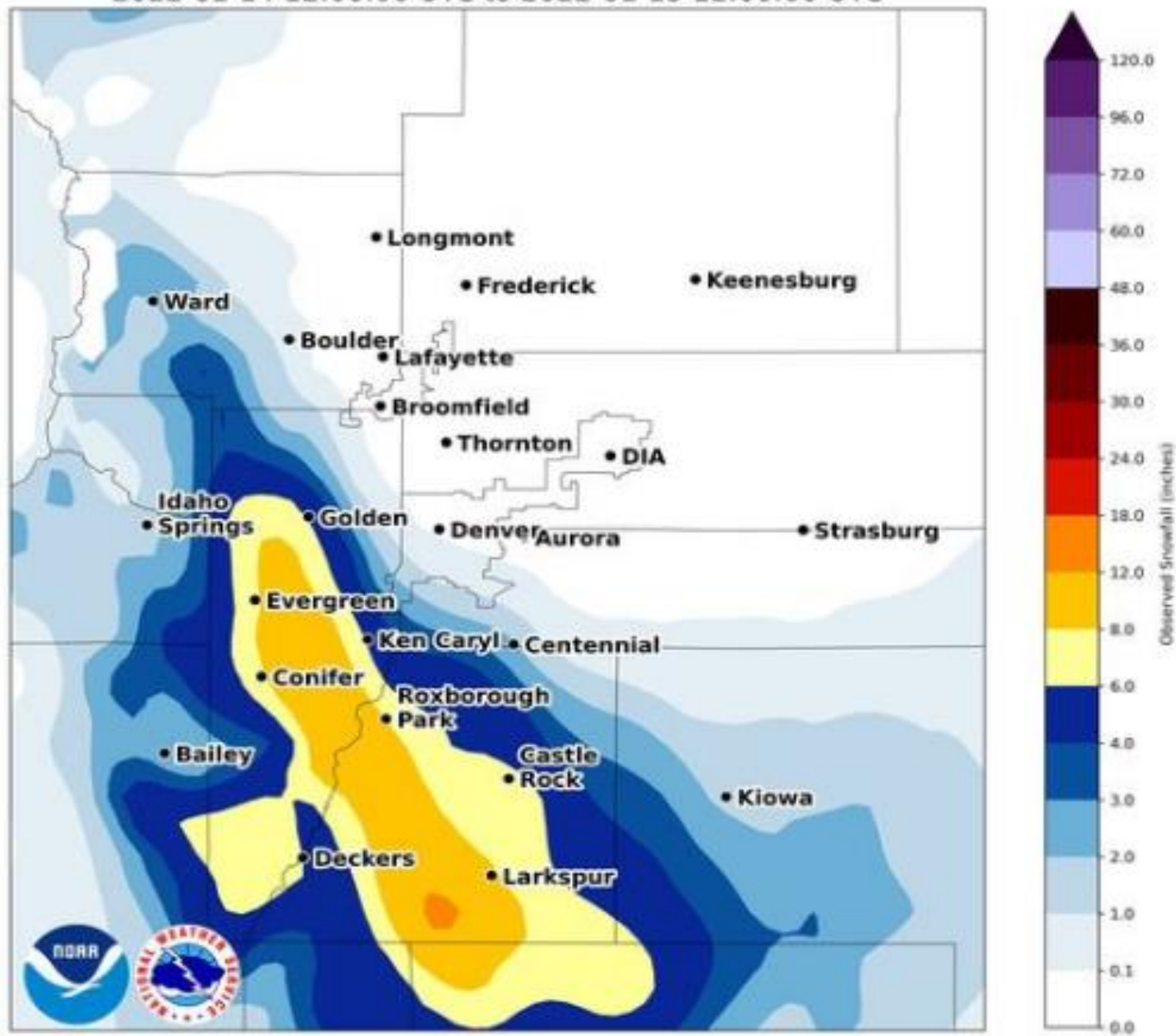
7.7 NW Boyero	61	Limon	58
I-76 Sterling	58	Akron	56
Hugo	56	Fort Morgan	55
Peetz	55	North Sterling	54
085s309 Wyoming Border	54	Black Hawk	53
Sterling 15 WNW	52	Akron	52
US 385 Holyoke	52	Sterling	51
Aspen Springs	51	Hugo	50
Cedar Point	50	Crook	49
Keenesburg	49	Silverthorne	49
Denver	48	Bennett	48
Berthoud Pass	47	I-25 and Buckeye Rd	47
Buckley	46	Stoneham 22 N	46
Glen Haven	46	Strasburg	46
Downieville	46	Akron	46
Holyoke Airport	45	Orchard	45
Fort Morgan	45	Nunn	45
Briggsdale	45	Julesburg	45

During the afternoon of the 14th, a persistent band of moderate to heavy snow set up across The Southern Foothills, western sections of Metro Denver and the Palmer Divide



Radar Mosaic: 2022/01/14 22:35 UTC

NOHRSC 24hr. Snowfall Accumulation From:
2022-01-14 12:00:00 UTC to 2022-01-15 12:00:00 UTC



Roxborough State Park 1/14/2022



Roxborough State Park 1/14/2022

Freezing drizzle produced dangerous driving conditions on the 19th

US-36 41.85 EB: 1.4 mi W of Superior



US-36 near Superior

I-25 232.15 SB @ Erie Pkwy/Summit Blvd (Union



I-25 near Erie

I-70 267.00 WB : 0.4 mi W of K



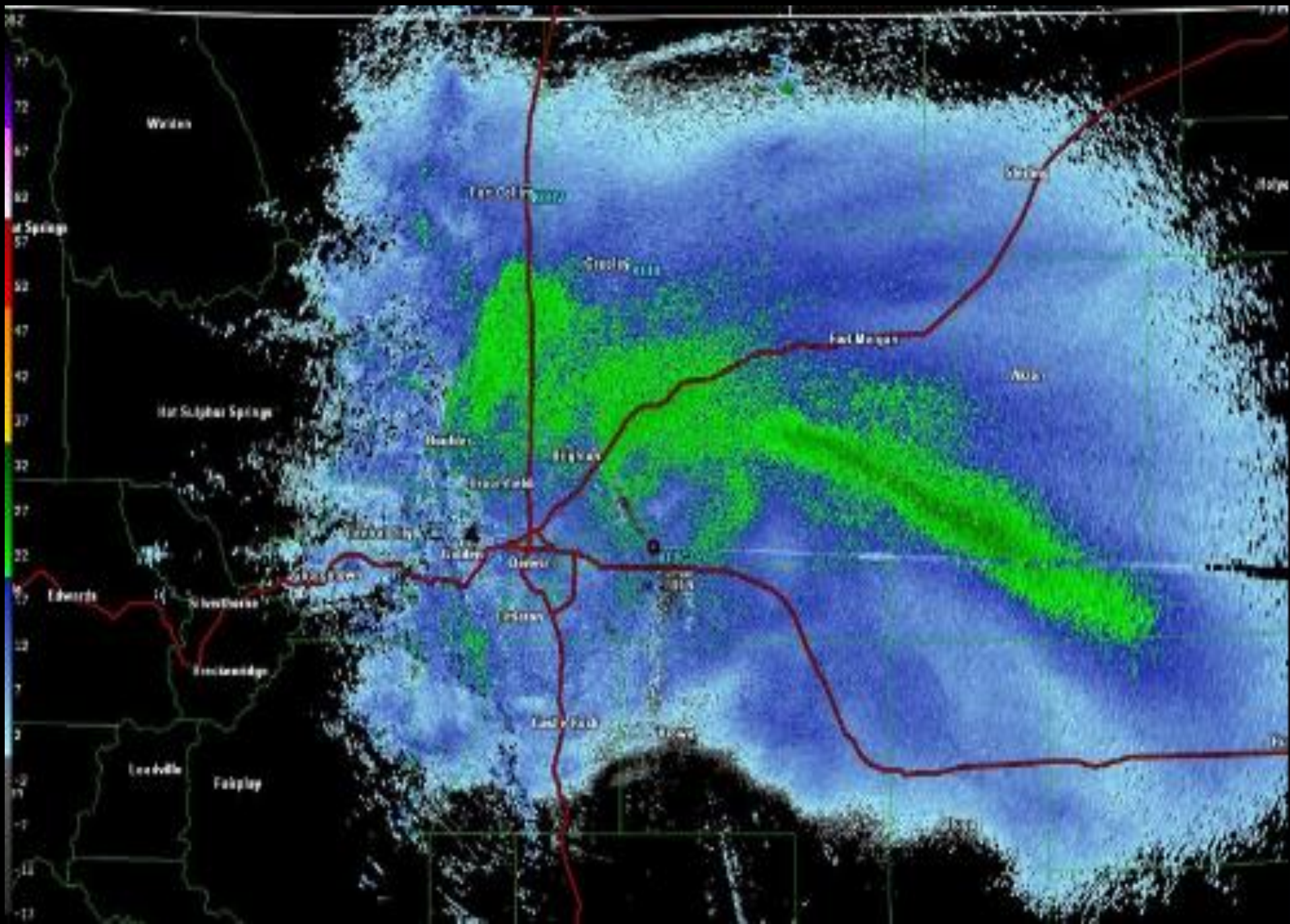
I-70 near Wheat Ridge

I-70 299.35 EB @ N Manila Rd Bennett

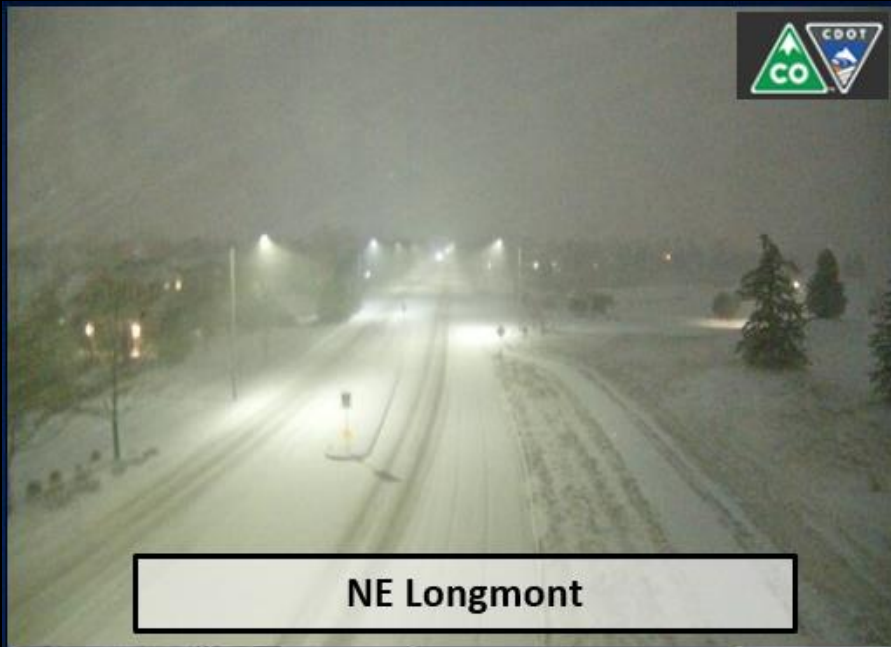


I-70 near Bennett

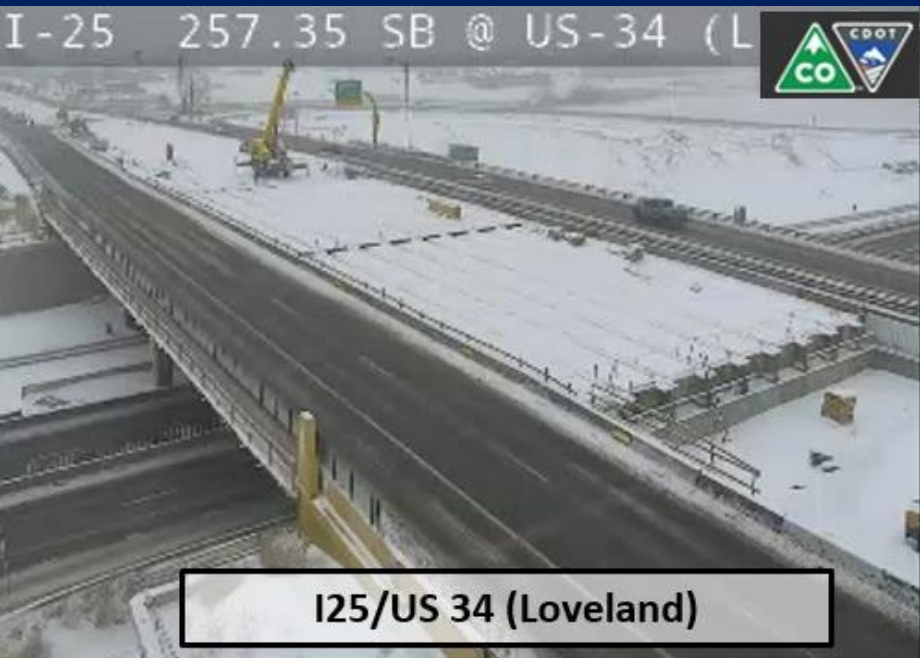
Just before sunrise of January 25th, a band of heavy snow was moving south toward Metro Denver



CDOT Cams just before sunrise of January 25th



By mid morning of the 25th, the snow was affecting all of the Front Range Urban Corridor



TEMPERATURES :

January in Denver typically ranks as the 2nd coldest month of the year with only December averaging colder conditions during the official NCEI 1991-2020 period. The average temperature at Denver International Airport for the month of January was 30.9. degrees F, which is 0.8 degrees below the normal of 31.7 degrees. No daily high or low temperature records were set during the month. The warmest temperature of the month was 62 degrees occurred on the 13th and the 17th with the coldest temperature of -9 degrees on the morning of the 1st.

TEN WARMEST JANUARY AVERAGE TEMPERATURES IN DENVER WEATHER HISTORY SINCE 1872: DEGREES F

40.3 - 1986
40.1 - 1934
39.6 - 1953
39.4 - 1935
38.3 - 1893
38.2 - 1911
37.9 - 1923
37.4 - 2006
37.3 - 1981, 1896

TEN COLDEST JANUARY AVERAGE TEMPERATURES IN DENVER WEATHER HISTORY SINCE 1872: DEGREES F

16.8 - 1930 *** COLDEST MONTH IN DENVER`S HISTORY
18.0 - 1979
18.1 - 1875
18.2 - 1937
19.1 - 1963
19.4 - 1949
19.5 - 1962
20.8 - 2007
21.7 - 1886
22.8 - 1916

PRECIPITATION:

January in Denver typically ranks as the 2nd driest month of the year with December averaging drier conditions over the official NCEI 1991-2020 period. Denver received 0.78 inches of precipitation in January 2022. This is 0.40 inches above the normal of 0.38 inches. The highest daily precipitation amount of 0.25 inches was measured on the 25th.

**TEN WETTEST JANUARY PRECIPITATION TOTALS IN DENVER WEATHER HISTORY
SINCE 1872: INCHES**

- 2.35 - 1883
- 1.90 - 1877
- 1.60 - 1891
- 1.46 - 1949
- 1.43 - 1948
- 1.33 - 1962
- 1.31 - 1973
- 1.24 - 1959
- 1.19 - 1992
- 1.14 - 1989

**ELEVEN DRIEST JANUARY PRECIPITATION TOTALS IN DENVER WEATHER HISTORY
SINCE 1872: INCHES**

- 0.01 - 1952, 1934, 1933
- 0.02 - 1931
- 0.03 - 2003, 1935, 1914
- 0.04 - 1904
- 0.05 - 1998, 1901, 1893

SNOWFALL:

13.4 inches of snow was measured in the month of January, making it the 14th snowiest January on record. This is 7.0 inches above the normal of 6.4 inches. The greatest daily snowfall occurred on the 25th when 5.0 inches was measured.

TEN SNOWIEST JANUARYS IN DENVER WEATHER HISTORY

SINCE 1872: INCHES

24.3 - 1992
22.2 - 1949
20.5 - 1883
19.2 - 1948
17.4 - 1959
17.2 - 1962
17.0 - 1987, 1891
15.9 - 2007
15.7 - 1951

ELEVEN LEAST SNOWIEST JANUARYS IN DENVER WEATHER HISTORY

SINCE 1872: INCHES

TRACE - 2003, 1934
0.1 - 1931
0.2 - 1933
0.3 - 1952
0.4 - 1914
0.8 - 1935
0.9 - 2020, 1970
1.0 - 1961, 1893

There were no days in which thunder was observed at Denver International Airport, and 5 days with dense fog with a visibility at or below 1/4 mile during the month. A peak wind gust of 49 mph from the north was recorded on the 14th.